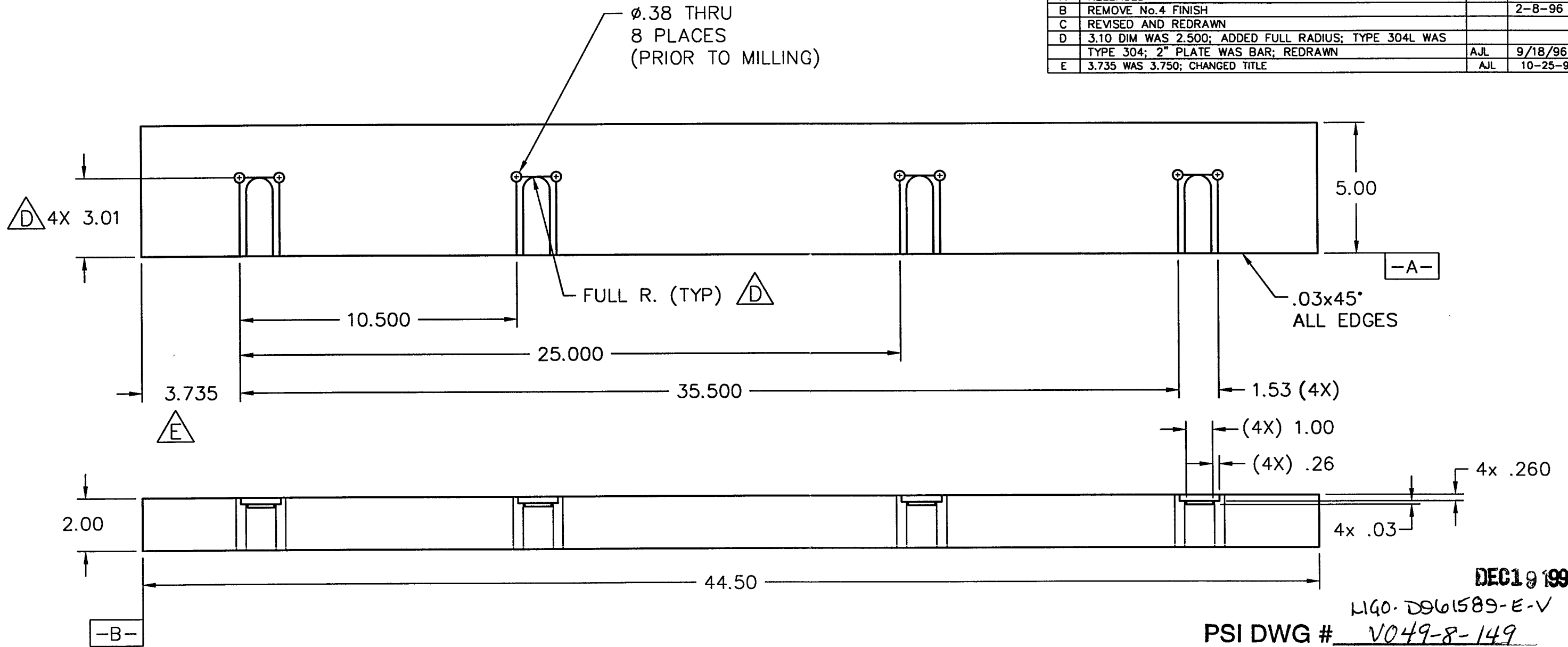


REV.	DESCRIPTION	APPROVED	DATE
A	RELEASED		
B	REMOVE No.4 FINISH		2-8-96
C	REVISED AND REDRAWN		
D	3.10 DIM WAS 2.500; ADDED FULL RADIUS; TYPE 304L WAS		
	TYPE 304; 2" PLATE WAS BAR; REDRAWN	AJL	9/18/96
E	3.735 WAS 3.750; CHANGED TITLE	AJL	10-25-96



DEC 19 1996

L140-D961589-E-V

PSI DWG # V049-8-149

NOTES:

- 1) ALL SURFACES SHALL BE MACHINED OR MECHANICALLY POLISHED.
- 2) DEBURR AND HAND FINISH ALL SURFACES SUCH THAT NO FIBER SNAGGING OCCURS WHEN PART IS WIPED USING A CLEAN AND DRY COTTON CLOTH.
- 3) PROTECT ALL SURFACES FROM SCRATCHES, GOUGES, AND TOOLING MARKS DURING HANDLING.

ITEM	QTY.	PART NO.	DESCRIPTION	2" PLATE, SAWED TO 5.1 X 44.6
PART LIST			MATERIAL SPECIFICATION 304L SST	
UNLESS OTHERWISE SPECIFIED DIMENSIONS ARE IN INCHES TOLERANCES ARE: DECIMALS ANGLES FINISH X.X ± .01 ± 10' 125' XXX ± .005 //, C, L WITHIN .05 UNSPECIFIED FILED: R.R.S. BREAK EDGES .040 ± 45° REMOVE ALL BURRS		CONTRACT OR SALES ORDER NO.		<p>GNB Corporation SCIENTIFIC AND INDUSTRIAL EQUIPMENT 30871 San Benito Court HAYWARD, CALIFORNIA 94544 (510) 441-1900 FAX: (510) 441-0839</p>
THIRD ANGLE PROJECTION		APPROVALS		
DO NOT SCALE DRAWING		ENGINEER ZH		
CADD FILE NAME B103245E		DATE 1-24-95		
D103236 USED ON			B DWG. NO. 103245	
			SCALE: NONE	
			SHEET 1 OF 1	