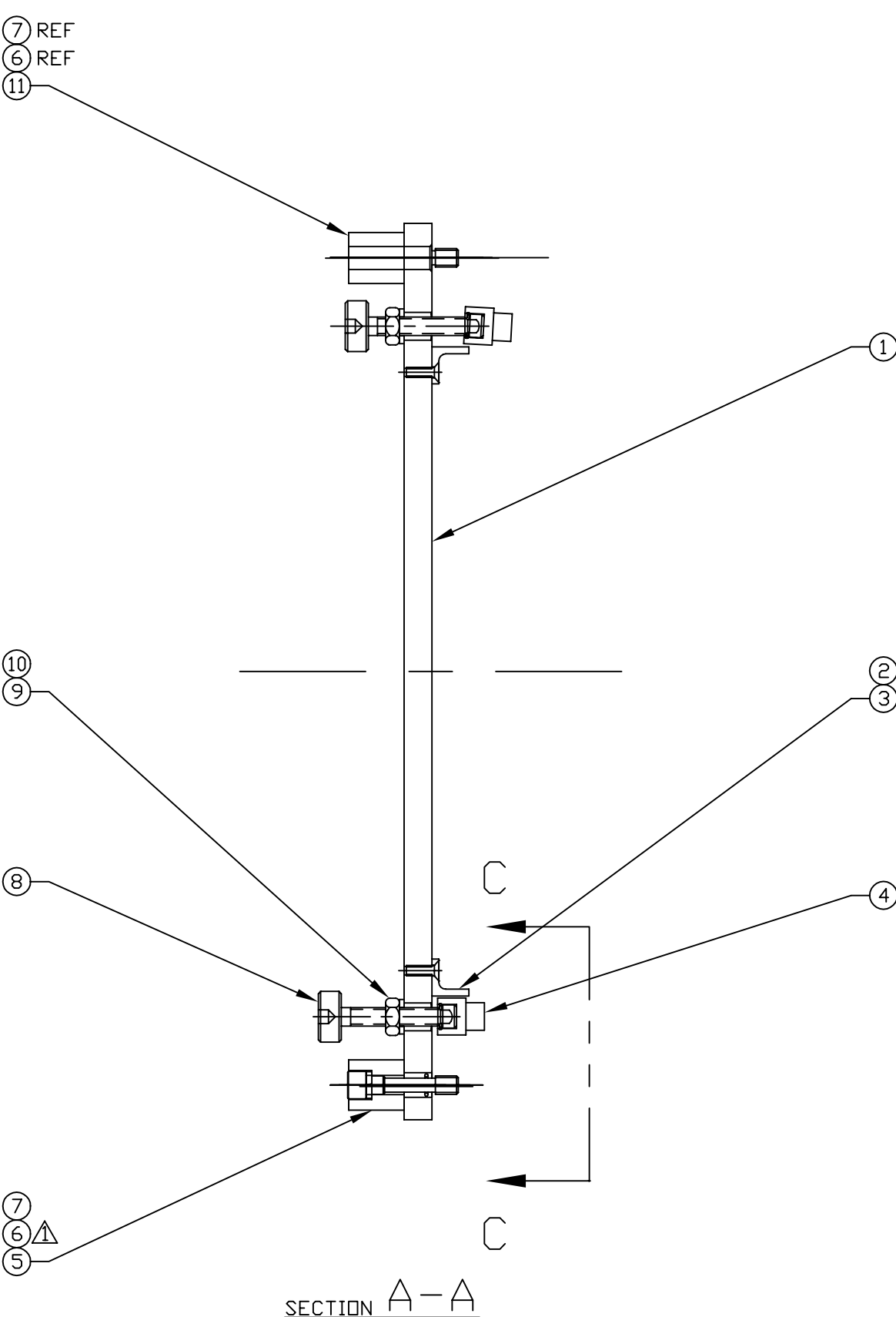
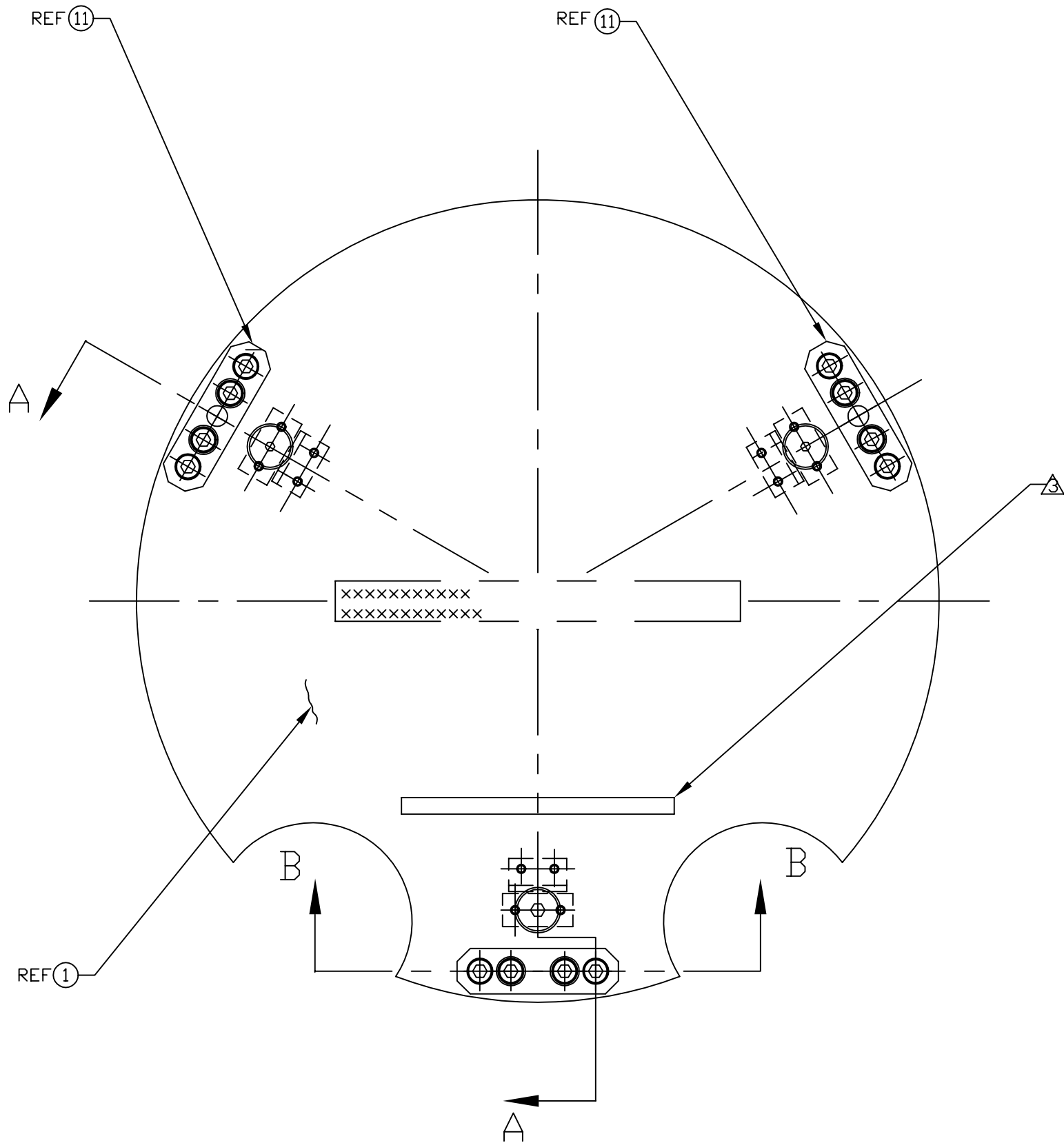
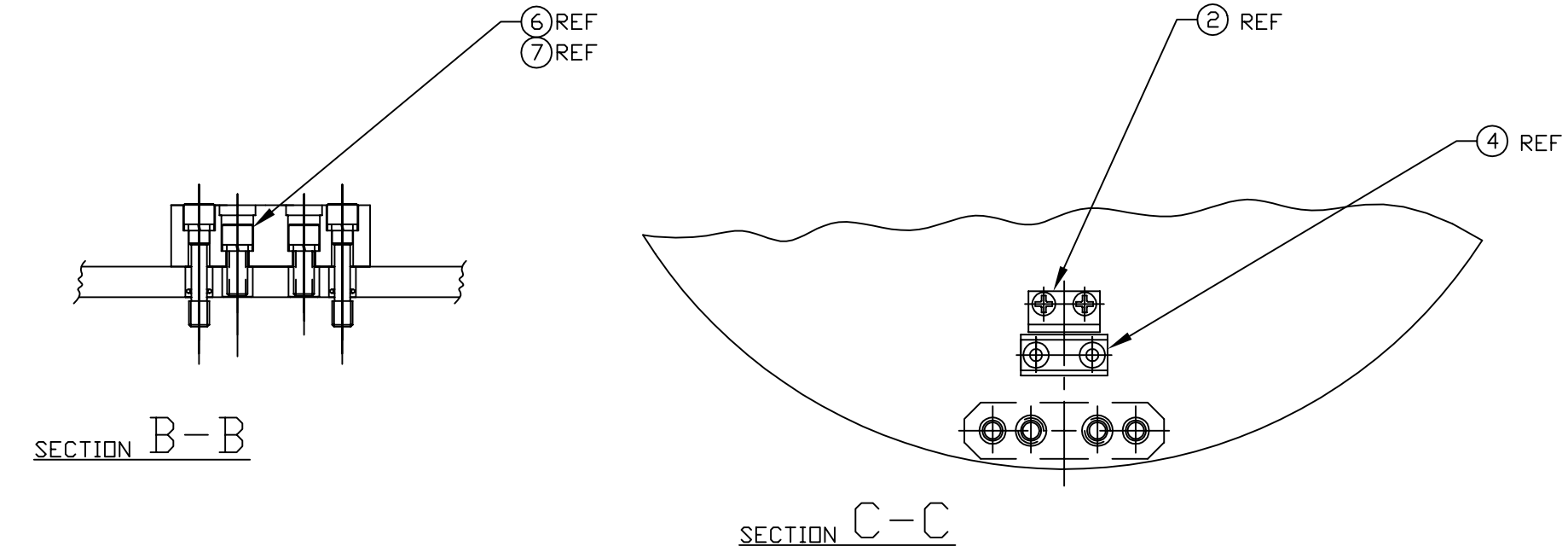


6 5 4 3 2 1



NOTES: (UNLESS OTHERWISE SPECIFIED)

- 1 TORQUE ITEM 6 (SCREW) TO 65-70 in-lb, 6 PLACES.
- 2 FOR VENDOR INFORMATION, SEE TOP ASSEMBLY MATERIALS LIST D970006 OR D970007.
- 3 MARK SERIAL NUMBER APPROX. WHERE SHOWN BY ENGRAVING, DIE STAMPING, OR OTHER PERMANENT METHOD, 1/4 INCH HIGH LETTERING.



REF	QTY	PART or DRWG No.	NOMENCLATURE or DESCRIPTION	MATERIAL
11	2	D961472	LOCATING CAPTIVE SCREW BRACKET ASSEMBLY	-
10	3	McM-Carr #90945A161	1/4 NOM ID FLAT WASH, .2551D .468OD .063THK	STAINLESS STEEL
9	3	McM-Carr #91240A029	1/4-20 HEX JAM NUT	STAINLESS STEEL
8	3	D970005	MODIFIED TOGGLE SCREW	-
7	6	McM-Carr #98437A029	1/4 NOM ID HI-COLLAR LOCKWASHER	STAINLESS STEEL
6	6	UC-COMPONENTS #C-2010-NA	1/4-20 X .63 LG SHCS	STLSS STL/SILVER PL.
5	1	D961471	CAPTIVE SCREW BRACKET ASSEMBLY	-
4	3	D961418	FOOT ASSEMBLY	-
3	6	McM-Carr #93085A147	#6-32 X .44 LG PHILLIPS FLAT HD SCR, 100°C.S.	STAINLESS STEEL
2	3	D961466	PAD GUIDE	-
1	1	D961467	TOP PLATE (METROLOGY)	-

REF QTY PART or DRWG No. NOMENCLATURE or DESCRIPTION MATERIAL

PARTS and MATERIAL LIST

UNLESS OTHERWISE SPECIFIED
DIMENSIONS ARE IN FEET [cm]

TOLERANCES:
FRACTIONAL ± THREE PLACE DECIMAL ±
ANGULAR ± FINISHED SURFACE RMS
ANGULAR ± BEND ± BREAK CORNERS IN OUT
TWO PLACE DECIMAL ± REMOVE ALL BURRS

MATERIAL: HEAT TREAT: FINISH:

USED ON: NEXT ASS'Y: D961460 & D961461

DCN 970061	CDYNE	CDNLEY	5-7-97
DCN 960157	CDYNE	KABOT	2-14-97
PRE-RELEASE	KABOT		1-21-97
REV	DESCRIPTION	ISSUE DESCRIPTION	DATE
		DCC	SYS
		DET	CDS
		VE	CC
		BT	CHECK
		DRWN	DATE

LIGO CALIFORNIA INSTITUTE OF TECHNOLOGY
MASSACHUSETTS INSTITUTE OF TECHNOLOGY

CORE OPTIC COMPONENT CARRIER
METROLOGY INTERFACE TOP PLATE
ASSEMBLY

CAD FILE: D961468-B.dwg SIZE: C DWG. NO.: D961468-B-D

SCALE: NTS SHEET: 1 OF 1

6 5 4 3 2 1