

6

5

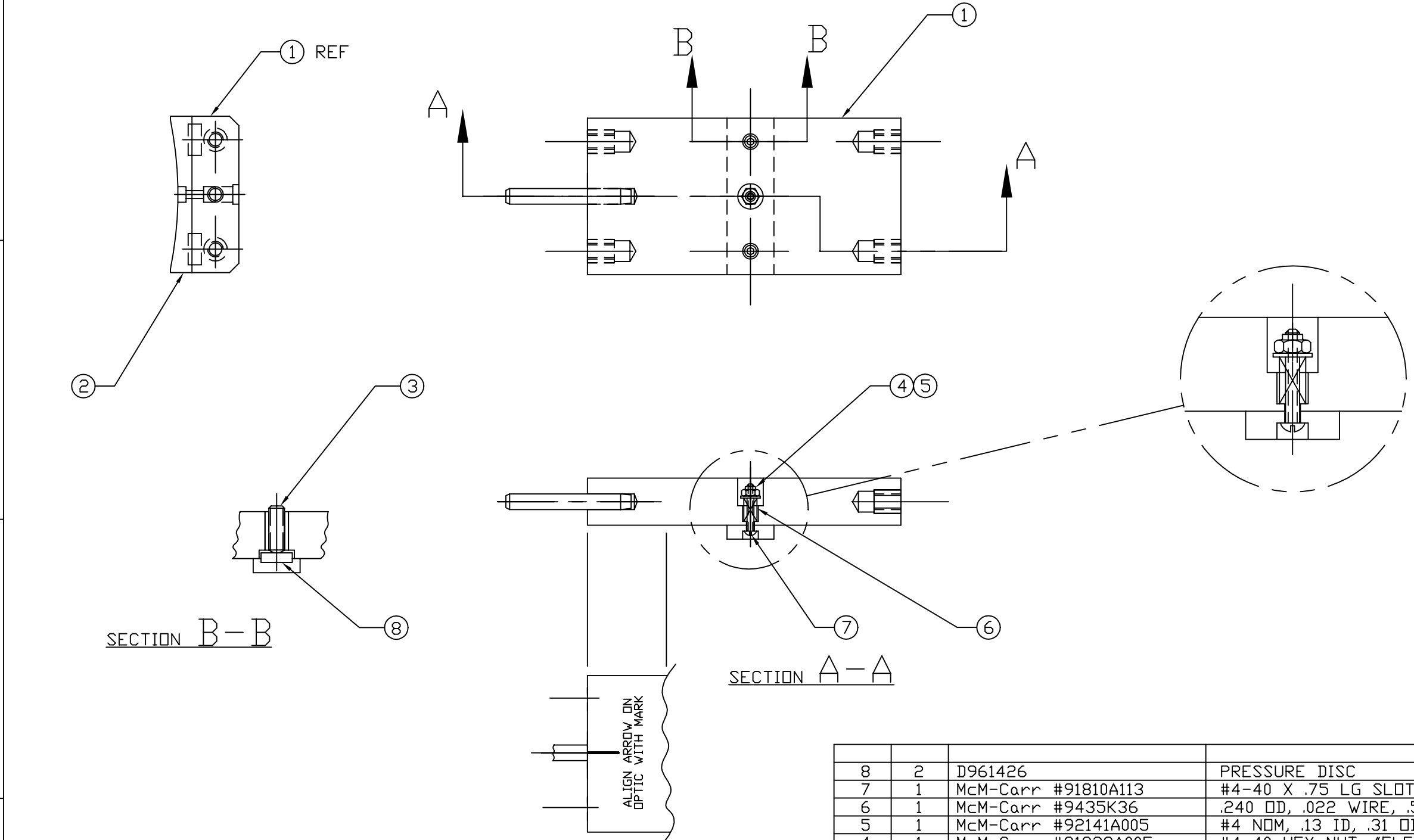
4

3

2

1

NOTES: (UNLESS OTHERWISE SPECIFIED)  
 1. FOR VENDOR INFORMATION, SEE TOP ASSEMBLY MATERIALS LIST D970006 OR D970007.



REF	QTY	PART or DRWG No.	NOMENCLATURE or DESCRIPTION	MATERIAL
8	2	D961426	PRESSURE DISC	-
7	1	McM-Carr #91810A113	#4-40 X .75 LG SLOTTED RD HD SCR	STAINLESS STEEL
6	1	McM-Carr #9435K36	.240 OD, .022 WIRE, .56 F.L. COMP. SPRING	STAINLESS STEEL
5	1	McM-Carr #92141A005	#4 NDM, .13 ID, .31 OD, .032 THK FL WASH	STAINLESS STEEL
4	1	McM-Carr #91839A005	#4-40 HEX NUT, "FLEXLOC"	STAINLESS STEEL
3	2	McM-Carr #92765A999	1/4-20 X .625 LG OVAL POINT SDC SET SCR	STAINLESS STEEL
2	1	D961423	SIDE PAD	-
1	1	D961452	INDEXED STANDOFF	-

<p>UNLESS OTHERWISE SPECIFIED DIMENSIONS ARE IN INCHES</p> <p>TOLERANCES:                  FRACTIONAL ±                  ANGULAR ±                  ANGULAR MACH ± BEND ±                  TWO PLACE DECIMAL ±</p> <p>THREE PLACE DECIMAL ±                  FINISHED SURFACE RMS                  BREAK CORNERS IN OUT                  REMOVE ALL BURRS</p>		<p>DCN No. E970060</p> <p>DCN No. E960157</p> <p>01 RELEASE FOR FAB</p> <p>pA PRELIMINARY RELEASE</p> <p>00 PRE-RELEASE</p>												<p>COYNE CONLEY 5-7-97</p> <p>COYNE KABOT 2-14-97</p>		<p><b>LIGO</b> CALIFORNIA INSTITUTE OF TECHNOLOGY                  MASSACHUSETTS INSTITUTE OF TECHNOLOGY</p>					
		<p>SCALE NTS</p>												<p>SIZE DWG. NO. B</p>		<p>SHEET 1 OF 1</p>					
<p>MATERIAL: _____ HEAT TREAT: _____ FINISH: _____</p>			<p>USED ON: _____ NEXT ASS'Y: D961460</p>			<p>ISSUE DESCRIPTION</p>												<p>LARGE CORE OPTIC COMPONENT                  CARRIER INDEXED STANDOFF                  ASSEMBLY</p> <p>CAD FILE D961454-B.dwg</p> <p>SCALE NTS</p>			

6

5

4

3

2

1