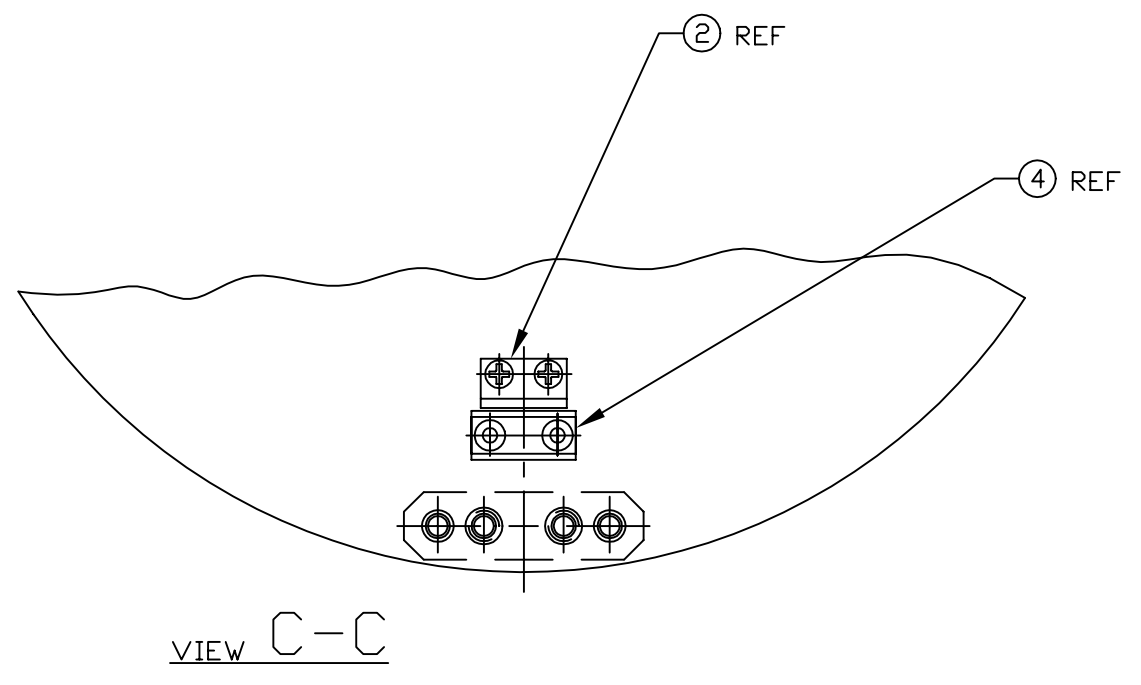
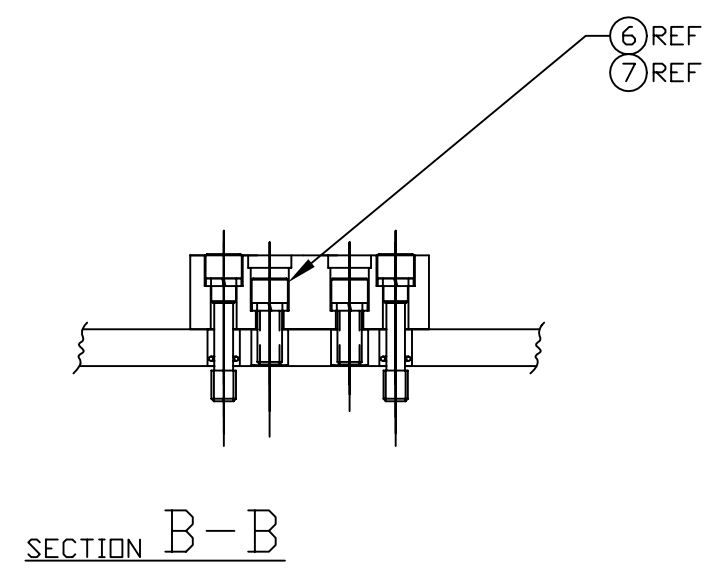
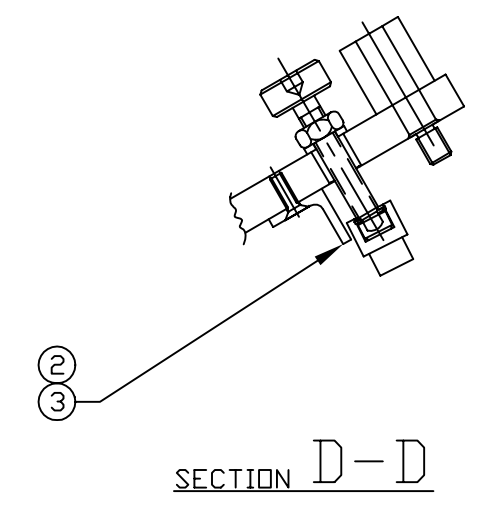
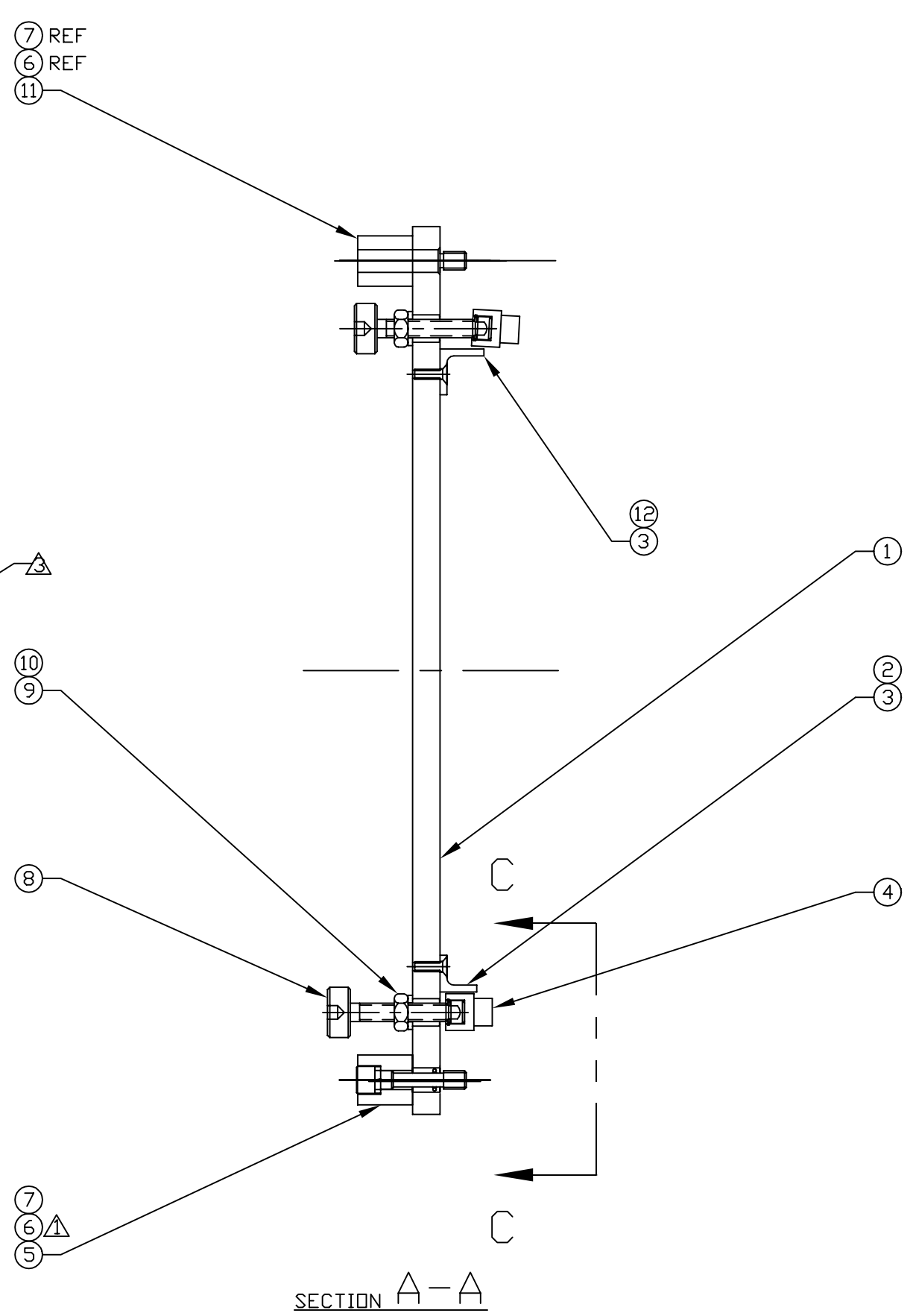
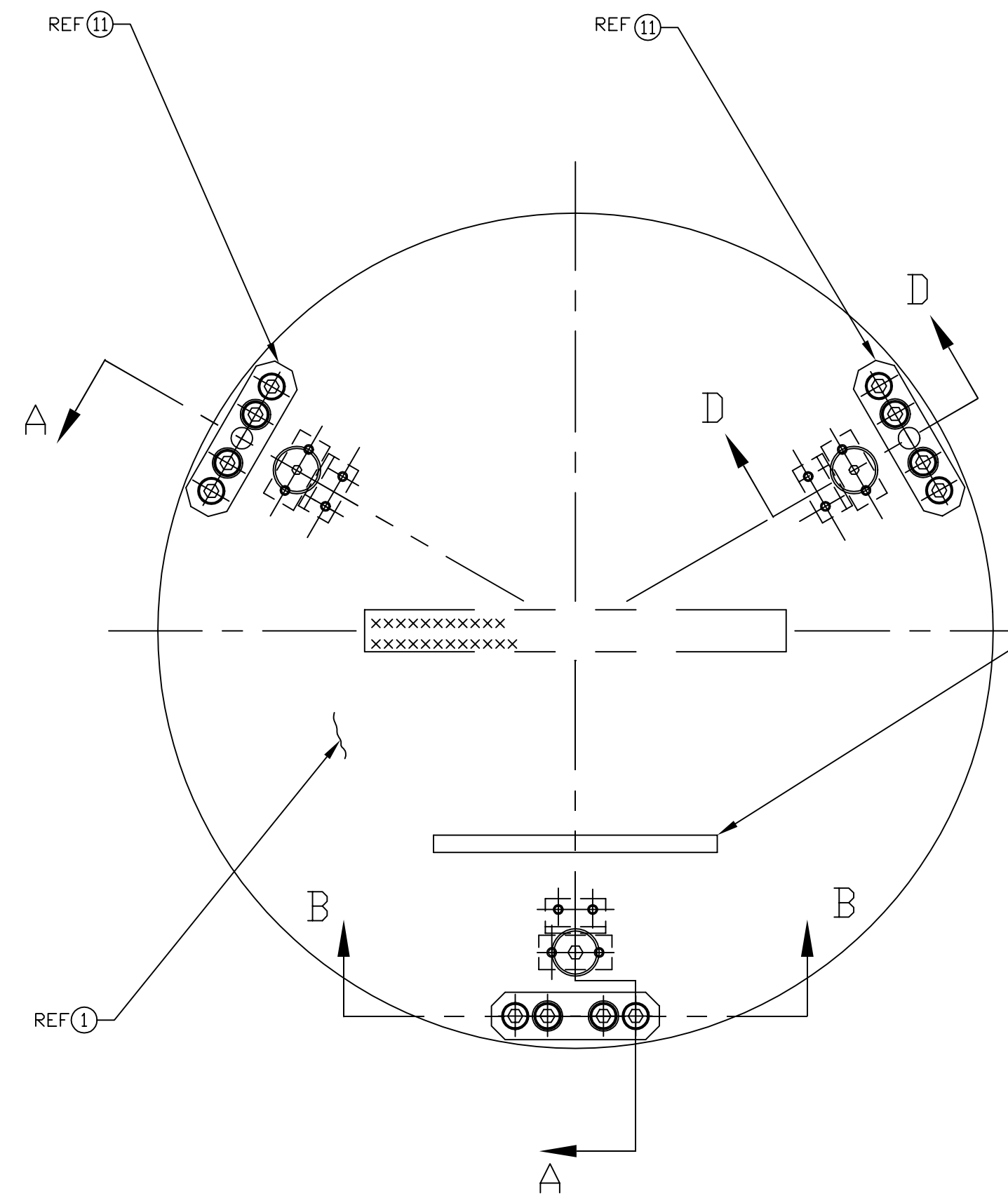


6 5 4 3 2 1

NOTES: (UNLESS OTHERWISE SPECIFIED)
 1 TORQUE ITEM 6 (SCREW) TO 65-70 in-lb, 6 PLACES.
 2 FOR VENDOR INFORMATION, SEE TOP ASSEMBLY MATERIALS LIST D970006 OR D970007.
 3 MARK SERIAL NUMBER APPROX. WHERE SHOWN BY ENGRAVING, DIE STAMPING, OR OTHER PERMANENT METHOD, 1/4 INCH HIGH LETTERING.



REF	QTY	PART or DRWG No.	NOMENCLATURE or DESCRIPTION	MATERIAL
12	1	D980367	LONG PAD GUIDE	-
11	2	D961472	LOCATING CAPTIVE SCREW BRACKET ASSEMBLY	-
10	3	McM-Carr #90945A161	1/4 NOM ID FLAT WASH, .255ID .468OD .063THK	STAINLESS STEEL
9	3	McM-Carr #91240A029	1/4-20 HEX JAM NUT	STAINLESS STEEL
8	3	D970005	MODIFIED TOGGLE SCREW	-
7	6	McM-Carr #98437A029	1/4 NOM ID HI-COLLAR LOCKWASHER	STAINLESS STEEL
6	6	UC-COMPONENTS #C-2010-NA	1/4-20 X .63 LG SHCS	STLSS STL/SILVER PL.
5	1	D961471	CAPTIVE SCREW BRACKET ASSEMBLY	-
4	3	D961418	FOOT ASSEMBLY	-
3	6	McM-Carr #93085A147	#6-32 X .44 LG PHILLIPS FLAT HD SCR, 100°C.S.	STAINLESS STEEL
2	2	D961466	PAD GUIDE	-
1	1	D961449	TOP PLATE	-

DWG. NO.		DESCRIPTION		MATERIAL		HEAT TREAT		FINISH		REV		DRWN		DATE		CHECK		DATE	
D961450-C		CORE OPTIC COMPONENT CARRIER TOP PLATE ASSEMBLY		STAINLESS STEEL		-		-		00		KABDT		1-17-97		-		-	
D961450-C.dwg		CORE OPTIC COMPONENT CARRIER TOP PLATE ASSEMBLY		STAINLESS STEEL		-		-		00		KABDT		1-17-97		-		-	
D961450-C		CORE OPTIC COMPONENT CARRIER TOP PLATE ASSEMBLY		STAINLESS STEEL		-		-		00		KABDT		1-17-97		-		-	

6 5 4 3 2 1