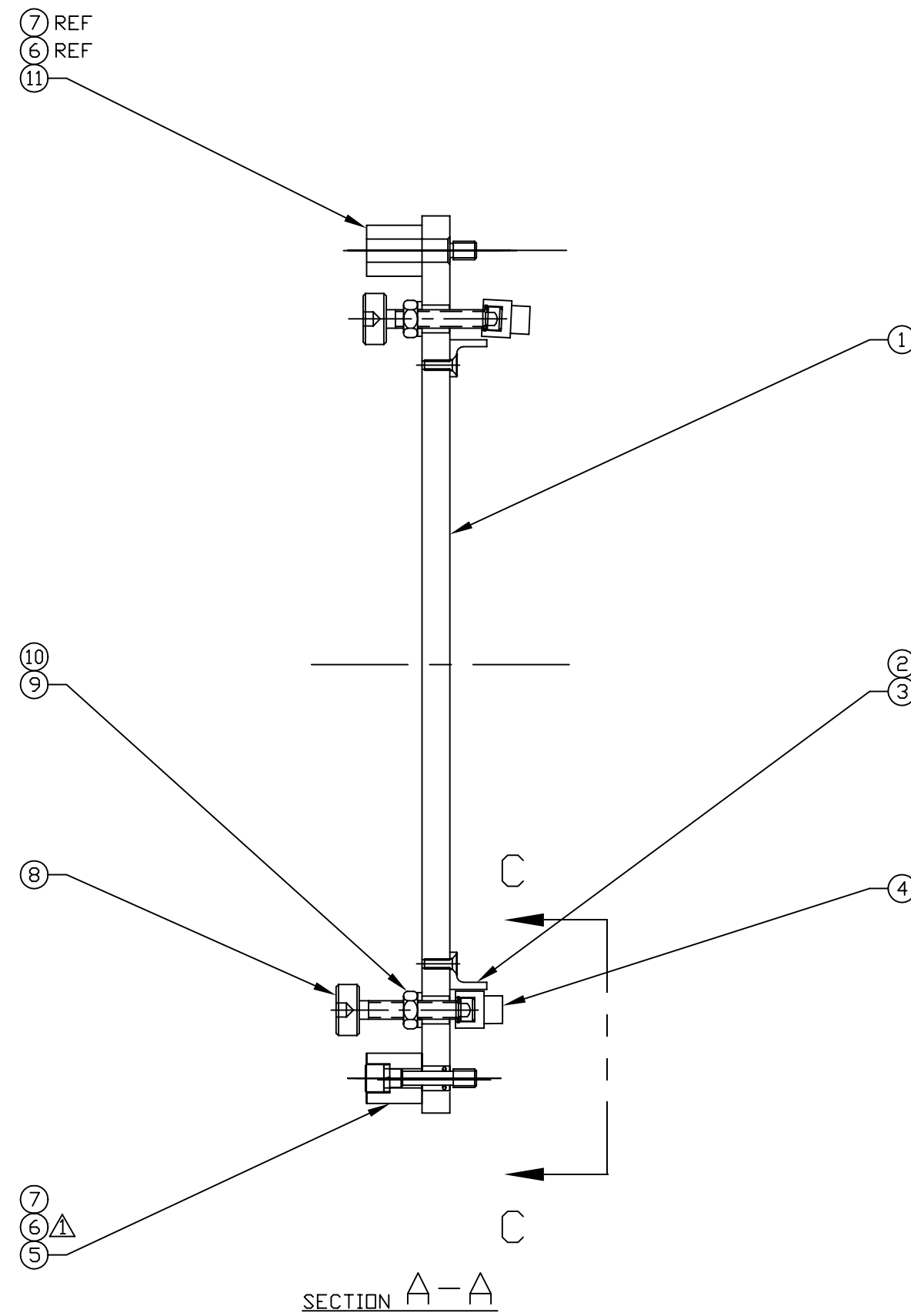
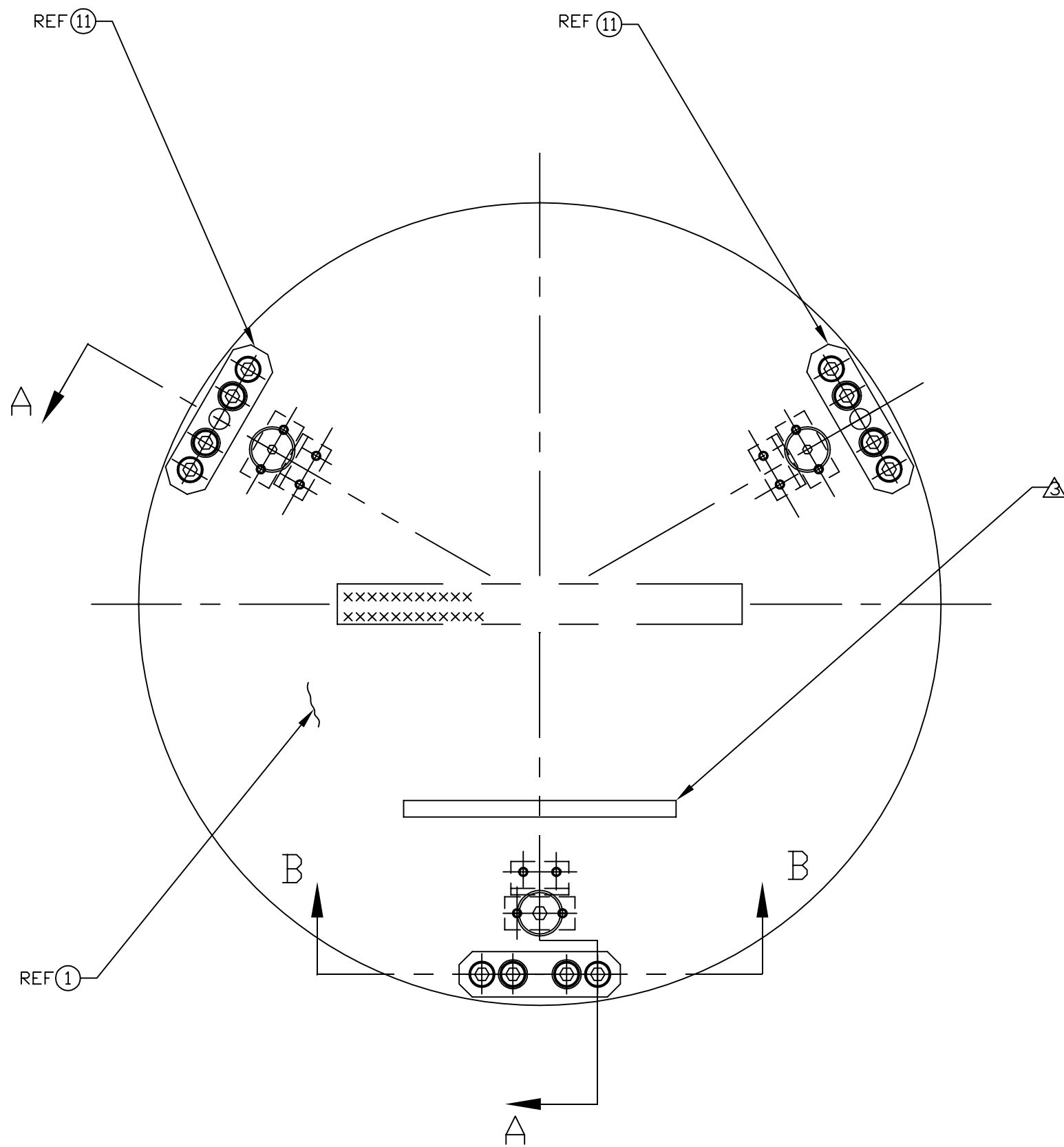
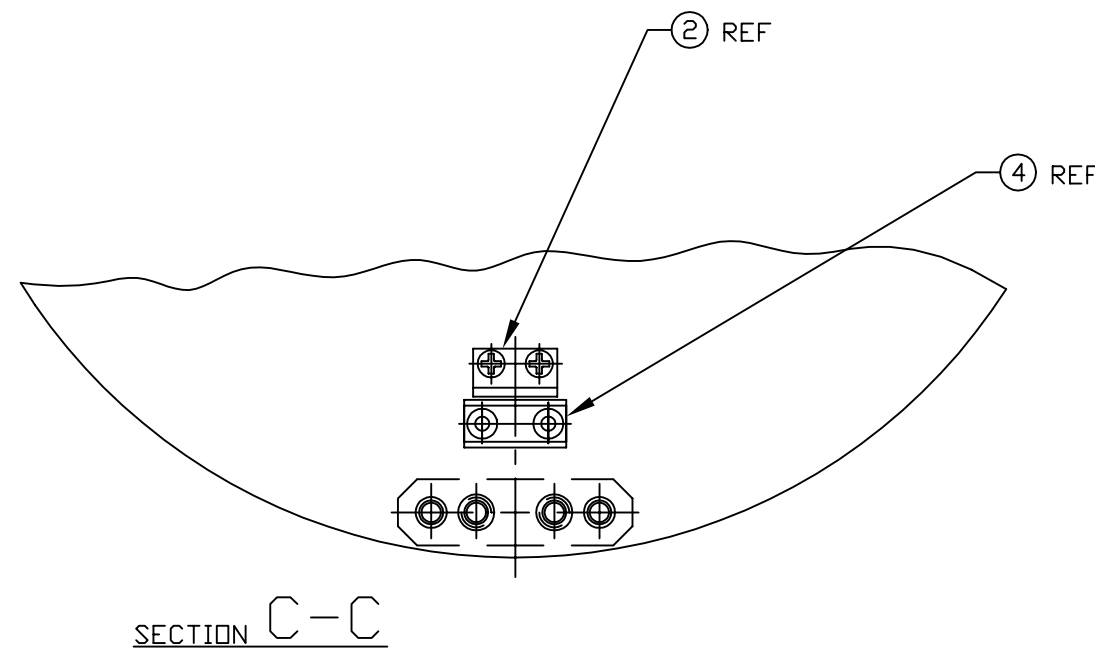
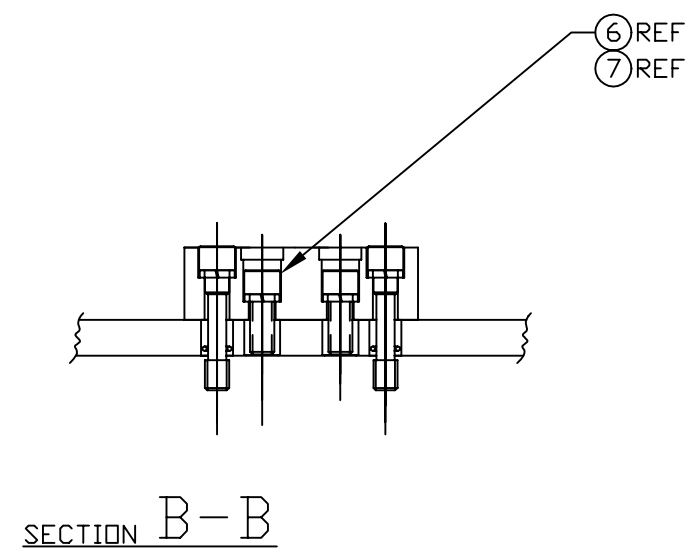


6 5 4 3 2 1



NOTES: (UNLESS OTHERWISE SPECIFIED)
 1 TORQUE ITEM 6 (SCREW) TO 65-70 in-lb, 6 PLACES.
 2 FOR VENDOR INFORMATION, SEE TOP ASSEMBLY MATERIALS LIST D970006 OR D970007.
 3 MARK SERIAL NUMBER APPROX. WHERE SHOWN BY ENGRAVING, DIE STAMPING, OR OTHER PERMANENT METHOD, 1/4 INCH HIGH LETTERING.



11	2	D961472	LOCATING CAPTIVE SCREW BRACKET ASSEMBLY	-
10	3	McM-Carr #90945A161	1/4 NOM ID FLAT WASH, .255ID .468OD .063THK	STAINLESS STEEL
9	3	McM-Carr #91240A029	1/4-20 HEX JAM NUT	STAINLESS STEEL
8	3	D970005	MODIFIED TOGGLE SCREW	-
7	6	McM-Carr #98437A029	1/4 NOM ID HI-COLLAR LOCKWASHER	STAINLESS STEEL
6	6	UC-COMPONENTS #C-2010-NA	1/4-20 X .63 LG SHCS	STLSS STL/SILVER PL.
5	1	D961471	CAPTIVE SCREW BRACKET ASSEMBLY	-
4	3	D961418	FOOT ASSEMBLY	-
3	6	McM-Carr #93085A147	#6-32 X .44 LG PHILLIPS FLAT HD SCR, 100°CS.	STAINLESS STEEL
2	3	D961466	PAD GUIDE	-
1	1	D961449	TOP PLATE	-
REF	QTY	PART or DRWG No.	NOMENCLATURE or DESCRIPTION	MATERIAL

PARTS and MATERIAL LIST

UNLESS OTHERWISE SPECIFIED DIMENSIONS ARE IN FEET [cm]			LIGO CALIFORNIA INSTITUTE OF TECHNOLOGY MASSACHUSETTS INSTITUTE OF TECHNOLOGY										
TOLERANCES:	THREE PLACE DECIMAL ±		DCN 970061 DCN 960157 PRE-RELEASE DESCRIPTION ISSUE DESCRIPTION DCC SYS DET CDS VE CC BT CHECK DRWN DATE COYNE CDNLEY 5-7-97 COYNE KABOT 2-14-97 KABOT 1-17-97 CAD FILE D961450-B.dwg SIZE C DWG. NO. D961450-B-D SCALE NTS SHEET 1 OF 1										
FRACTIONAL ±	FINISHED SURFACE RMS												
ANGULAR ±	BREAK CORNERS IN OUT												
ANGULARMACH ± BEND ±	REMOVE ALL BURRS												
TWO PLACE DECIMAL ±	MATERIAL:	HEAT TREAT:	FINISH:										
DWG. NO.	DESCRIPTION	USED ON:	NEXT ASS'Y: D961460 & D961461										
REFERENCE DRAWINGS													

6 5 4 3 2 1