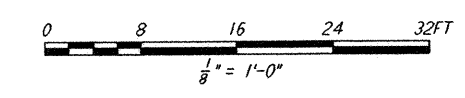
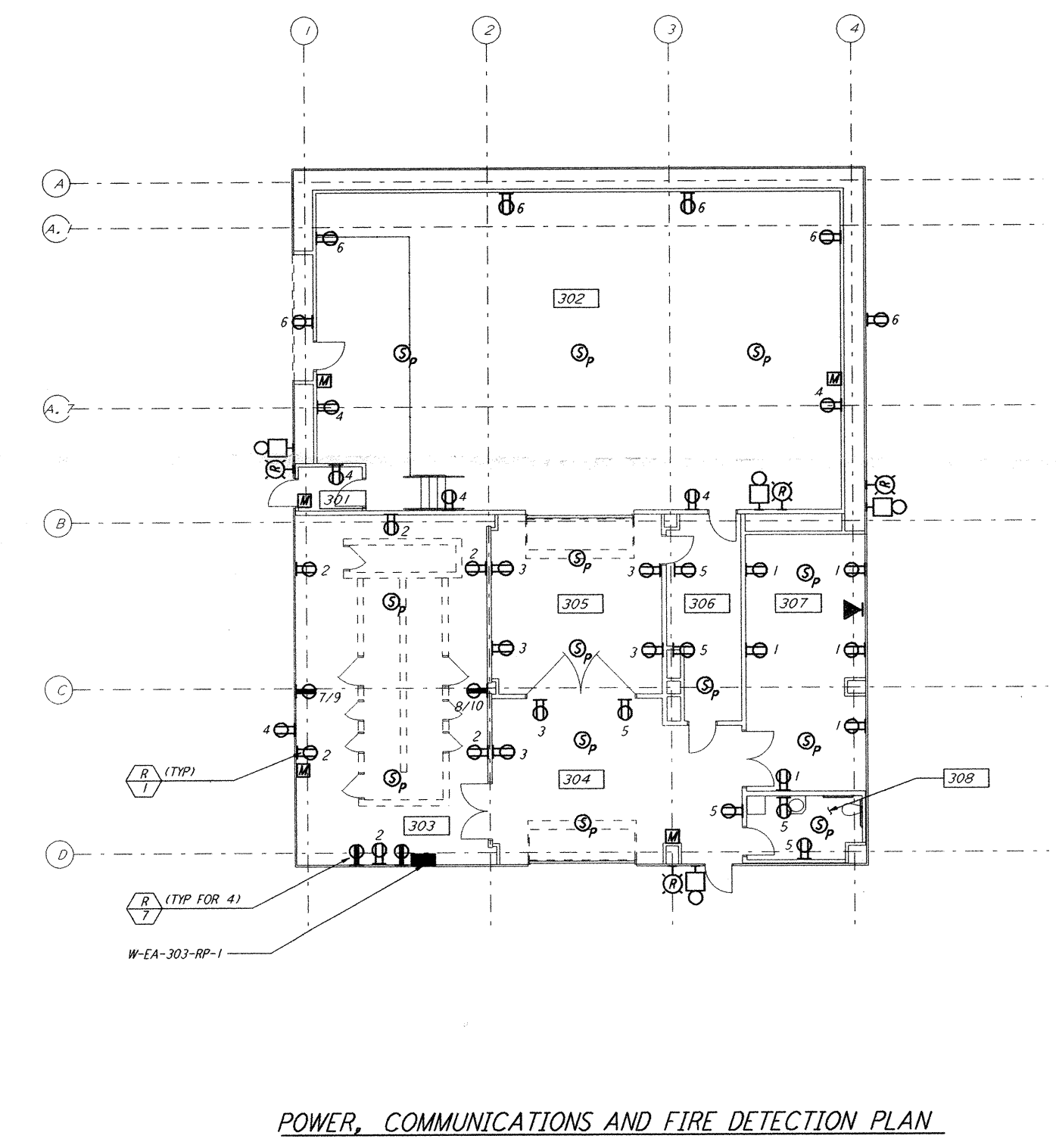
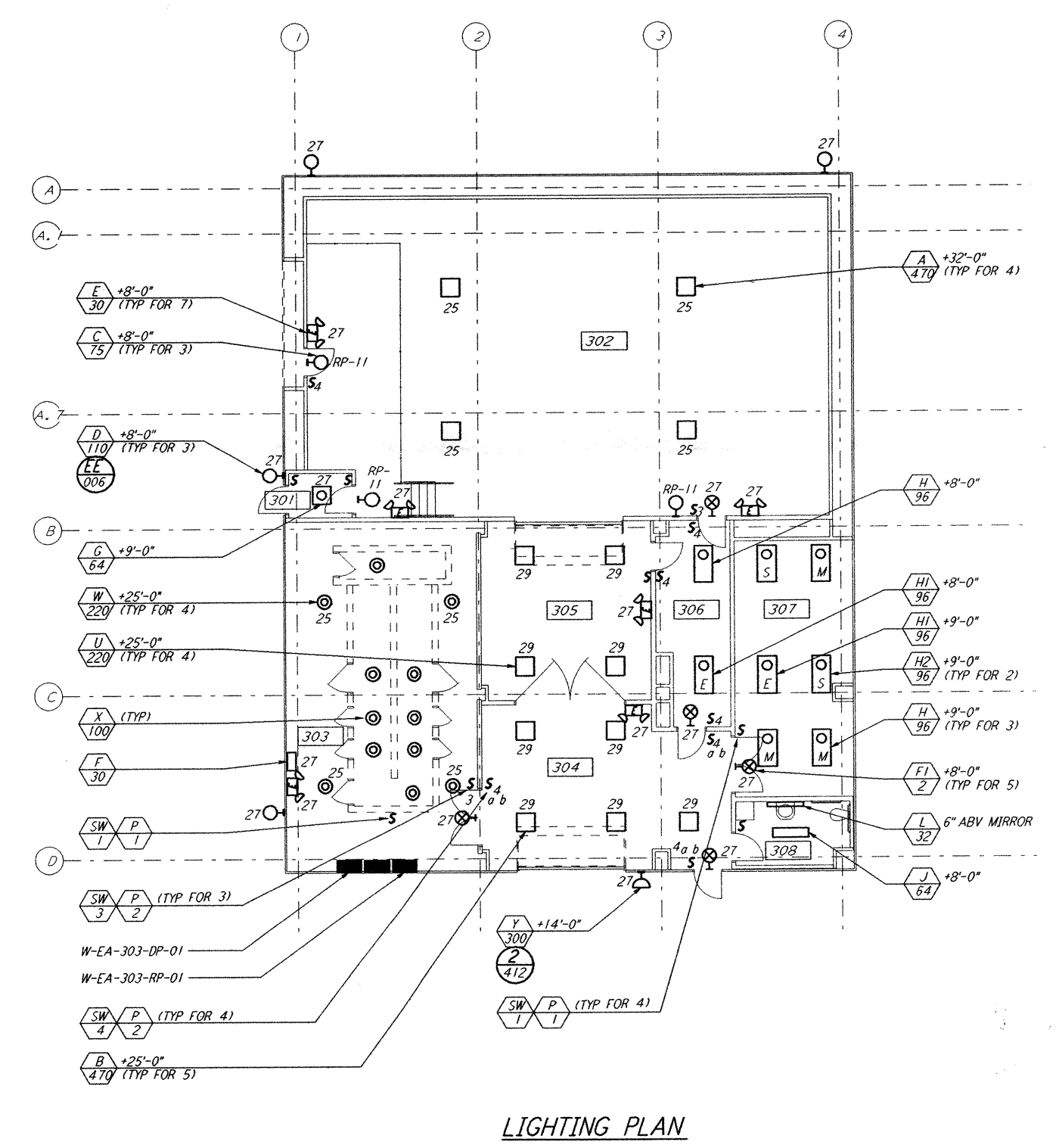


- NOTES:**
- FOR GENERAL NOTES, AND LEGEND SEE THE FOLLOWING DRAWINGS:
 RECEPTACLES = WA-E-101
 LIGHTING = WA-E-102
 FIRE ALARM = WA-E-110
 - FOR RECEPTACLE LEGEND SEE DWG. WA-E-106.



This document and the design it covers are the property of PARSONS. They are loaned only with the borrower's expressed written agreement that they will not be reproduced, copied, loaned, exhibited, or used in any other way, except by written consent from PARSONS to the borrower.

9				J				DATE	10-31-95
8				H				DRAWN	J. G.
7				G				CHECKED	
6				F				ENGINEER	
5				E				PROJ MGR	
4				D					
3				C					
2				B					
1				A	10-31-95	TDM	PRELIMINARY DESIGN REVIEW		
	NO.	DATE	APRD BY	DESCRIPTION OF REVISION	NO.	DATE	APRD BY	ISSUED FOR	

DATE	10-31-95
DRAWN	J. G.
CHECKED	
ENGINEER	
PROJ MGR	

PARSONS

100 WEST WALNUT STREET
 PASADENA, CALIFORNIA

LIGO

CALIFORNIA INSTITUTE OF TECHNOLOGY
 MASSACHUSETTS INSTITUTE OF TECHNOLOGY

LASER INTERFEROMETER
 GRAVITATIONAL-WAVE OBSERVATORY
 SITE NO. 1 - HANFORD, WASHINGTON

**ELECTRICAL
 END STATION POWER
 LIGHTING, FIRE DET AND
 COMMUNICATION PLAN**

AS NOTED PP150969 8094
WA-E-301

LIGO-D961436-A-D | LIGOWAF.BDR

Tue Oct 31 01:09:55 1995 s3-v18b2 J:\PLOTS\QUEUES\18B2\EE301A.PRF