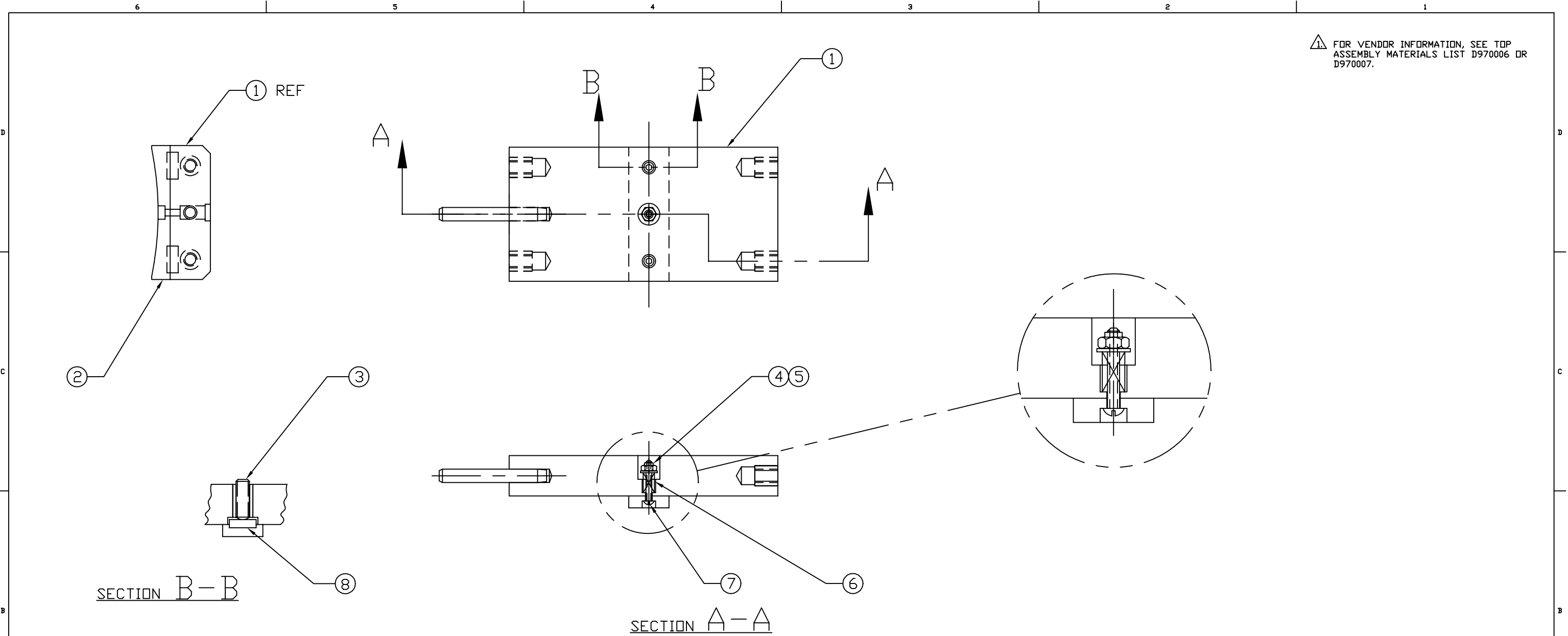


FOR VENDOR INFORMATION, SEE TOP ASSEMBLY MATERIALS LIST D970006 OR D970007.



REF	QTY	PART or DRWG No.	NOMENCLATURE or DESCRIPTION	MATERIAL
8	2	D961426	PRESSURE DISC	-
7	1	McM-Carr #91810A113	#4-40 X .75 LG SLOTTED RD HD SCR	STAINLESS STEEL
6	1	McM-Carr #9435K36	.240 OD, .022 WIRE, .56 F.L. COMP. SPRING	STAINLESS STEEL
5	1	McM-Carr #92141A005	#4 NDM, .13 ID, .31 OD, .032 THK FL WASH	STAINLESS STEEL
4	1	McM-Carr #91839A005	#4-40 HEX NUT, "FLEXLOC"	STAINLESS STEEL
3	2	McM-Carr #92765A999	1/4-20 X .625 LG OVAL POINT SDC SET SCR	STAINLESS STEEL
2	1	D961423	SIDE PAD	-
1	1	D961432	STANDOFF	-

PARTS and MATERIAL LIST

<p>UNLESS OTHERWISE SPECIFIED DIMENSIONS ARE IN INCHES</p> <p>TOLERANCES: FRACTIONAL ± ANGULAR ± ANGULAR MACH ± BEND ± TWO PLACE DECIMAL ±</p> <p>MATERIAL: _____ HEAT TREAT: _____ FINISH: _____</p> <p>USED ON: _____ NEXT ASS'Y: D961460</p>				<p>DCN No. E970060</p> <p>DCN No. E960157</p> <p>01 RELEASE FOR FAB</p> <p>pA PRELIMINARY RELEASE</p> <p>00 PRE-RELEASE</p>												<p>LIGO CALIFORNIA INSTITUTE OF TECHNOLOGY MASSACHUSETTS INSTITUTE OF TECHNOLOGY</p> <p>LARGE CORE OPTIC COMPONENT CARRIER STANDOFF ASSEMBLY</p>		
				<p>CDYNE CONLEY 5-7-97</p> <p>CDYNE KABOT 2-14-97</p> <p>KABOT 1-6-97</p>												<p>CAD FILE: D961434-B.dwg SIZE: B DWG. NO.: D961434-B-D</p> <p>SCALE: NTS SHEET: 1 OF 1</p>		
<p>DWG. NO. _____ DESCRIPTION _____</p> <p>REFERENCE DRAWINGS _____</p>				<p>REV _____ DESCRIPTION _____</p> <p>DCC SYS DET CDS VE CC BT CHECK DRWN DATE</p> <p>ISSUE DESCRIPTION _____</p>												<p>DATE _____</p>		