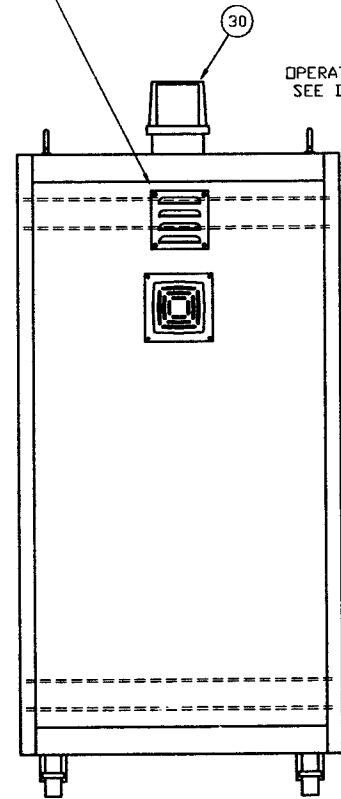
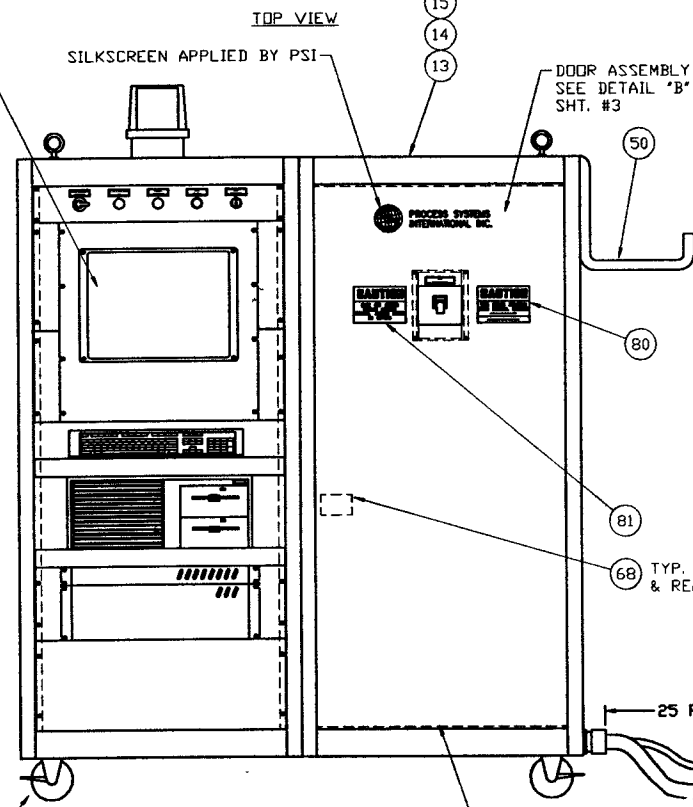


LEFT SIDE PANEL
SEE DETAIL 'G' SHT. #7



LEFT SIDE VIEW

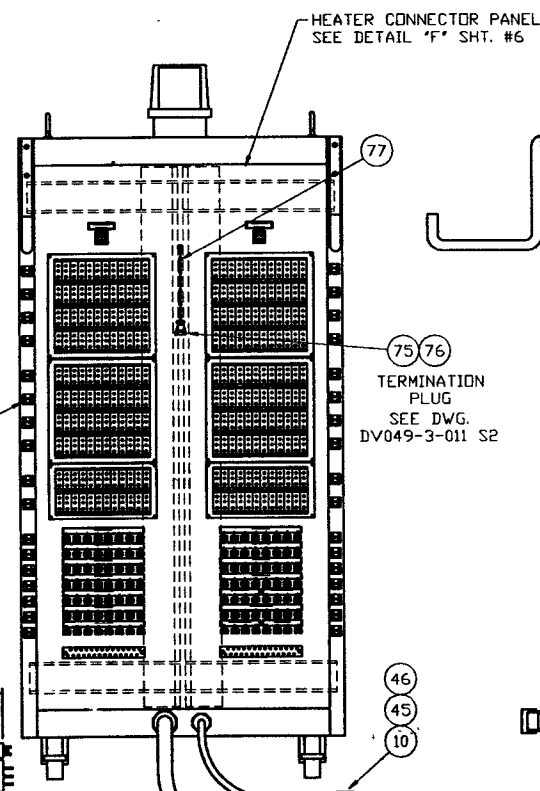
OPERATOR CONTROL RACK
SEE DETAIL 'A' SHT. #2



FRONT VIEW
(LEFT HAND DOOR NOT SHOWN)

FRONT HEATER CONTROL PANEL
SEE DETAIL 'C' SHT. #4

DOOR ASSEMBLY
SEE DETAIL 'B' SHT. #3



RIGHT SIDE VIEW

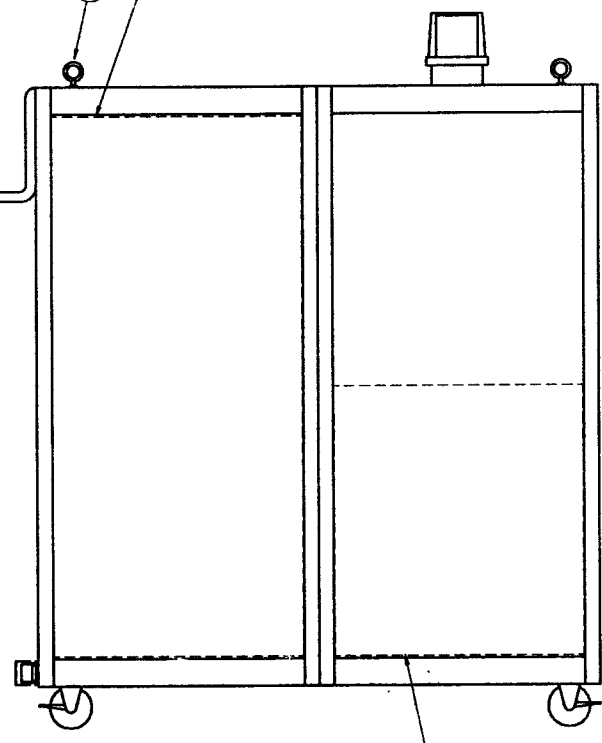
HEATER CONNECTOR PANEL
SEE DETAIL 'F' SHT. #6

75 76
TERMINATION
PLUG
SEE DWG.
DV049-3-011 S2

46
45
10

120V CORD SET
480V CORD SET

REAR HEATER CONTROL PANEL
SEE DETAIL 'D' SHT. #4



REAR VIEW

PLC CONTROL PANEL
SEE DETAIL 'E' SHT. #5

APR 30 1996

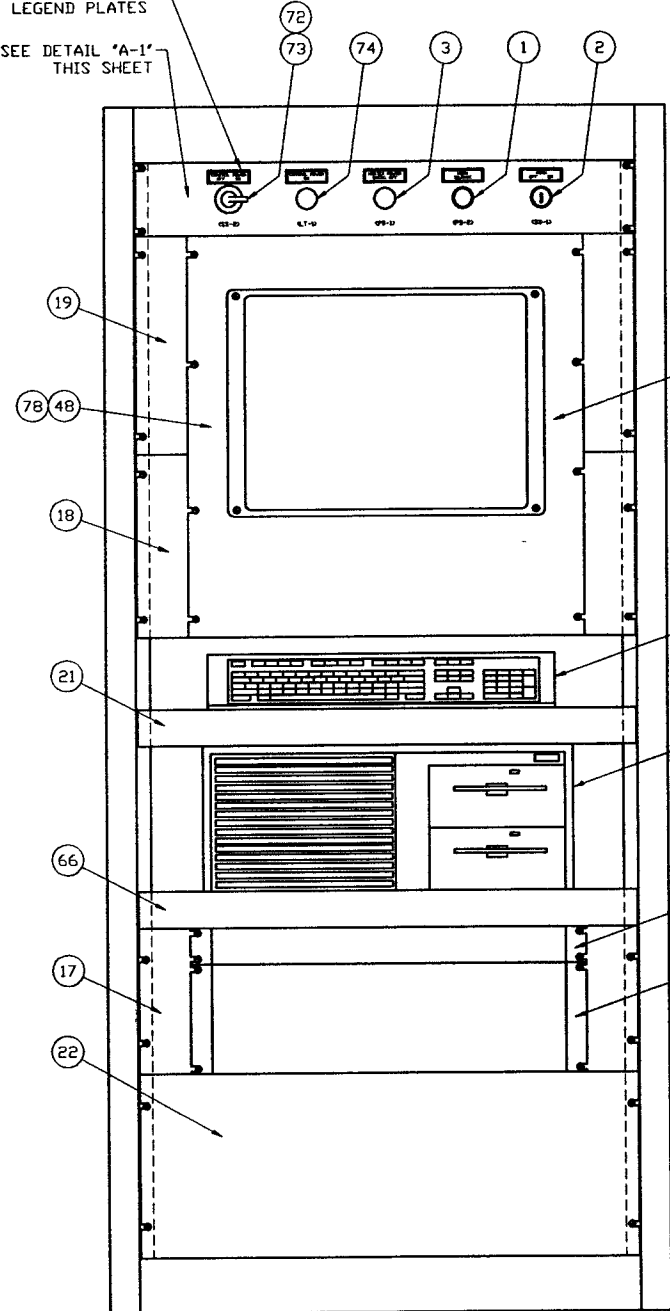
- FINISH:**
- 1.) PRIME & PAINT ENCLOSURE, DOORS & LOUVER
PHATHALO BLUE POLANE 'T' MEDIUM TEXTURE.
 - 2.) PRIME & PAINT OPERATOR CONTROL ASSEMBLY PANELS
& EQUIPMENT MOUNTS CARBIDE BLACK POLANE 'T' MEDIUM
TEXTURE.
 - 3.) PRIME & PAINT INTERNAL ELECTRICAL MOUNTING PANELS
WHITE ENAMEL.

PROCESSED AND CONFIDENTIAL				UNLESS OTHERWISE SPECIFIED				PROCESS SYSTEMS INTERNATIONAL, INC.			
THIS DOCUMENT CONTAINS PROPRIETARY INFORMATION BELONGING TO PROCESS SYSTEMS INTERNATIONAL, INC. OR ITS AFFILIATED COMPANIES AND SHALL BE USED ONLY FOR THE PURPOSE FOR WHICH IT WAS SUPPLIED. IT SHALL NOT BE COPIED, REPRODUCED OR OTHERWISE USED NOR SHALL SUCH INFORMATION BE FURNISHED IN WHOLE OR IN PART TO OTHERS EXCEPT IN ACCORDANCE WITH THE TERMS OF ANY AGREEMENT UNDER WHICH IT WAS SUPPLIED OR WITH THE PRIOR WRITTEN CONSENT OF PROCESS SYSTEMS INTERNATIONAL, INC. AND SHALL BE RETURNED UPON REQUEST.				DIMENSIONS ARE IN INCHES TOLERANCES: FRACTIONAL & DECIMALS: .005" MIN. HOLE DRILLING: .005" DIA. MIN. TWO PLACE DECIMAL: .01" THREE PLACE DECIMAL: .005" FINISHED SURFACE: .015" BREAK CORNERS: .015" DIA. REMOVE ALL BURRS				30 WALRUP DR. WESTBOROUGH, MASSACHUSETTS 01581 USA			
DO NOT SCALE THIS DRAWING				1 ISSUED FOR CONSTRUCTION				ASSEMBLY, HEATER CONTROL CART			
USED ON				0 ISSUED FOR RELEASE				LIGD BAKEDOUT SYSTEM			
NEXT ASS'Y				REV				CAD FILE 301351			
DESCRIPTION				DESCRIPTION				SIZE D			
REFERENCE DRAWINGS				ISSUE DESCRIPTION				DWG. NO. V049-3-013			
8				3				SCALE 3/16			
7				2				SHEET 1 OF 7			
6				1				REV. 1			
5				4				DATE 3/18/96			
4				3				BY BAR			
3				2				DATE 2/16/95			
2				1				CHKD BAR			
1				0				DATE 3/18/96			
0				-1				DECN 0095			

LIGD-D961410-01-V

SEE DETAIL "A-2"
THIS SHEET FOR
LEGEND PLATES

SEE DETAIL "A-1"
THIS SHEET



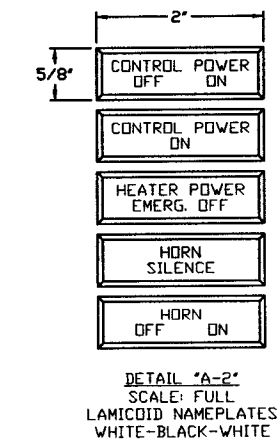
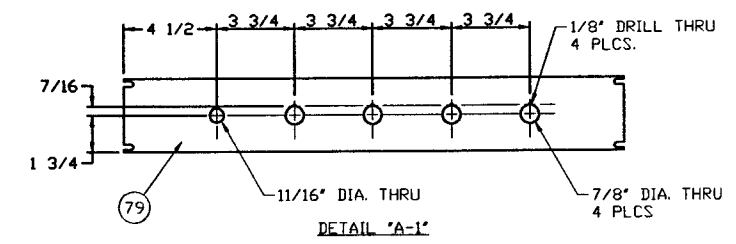
MONITOR FURNISHED BY PSI
(PSI SPEC #V049-2-049)

KEYBOARD FURNISHED BY PSI
(PSI SPEC #V049-2-049)

COMPUTER FURNISHED BY PSI
(PSI SPEC #V049-2-049)
STRAP COMPUTER TO SHELF

TEMPSCAN-1000A UNIT FURNISHED BY PSI
(PSI SPEC #V049-2-050)

EXP-11A UNIT FURNISHED BY PSI
(PSI SPEC #V049-2-050)



DETAIL "A"
OPERATOR CONTROL RACK

APR 30 1996

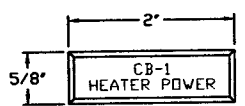
PROCESS SYSTEMS INTERNATIONAL INC. 20 WALRUP DR. WESTBOROUGH, MASSACHUSETTS 01581 USA			
ASSEMBLY, HEATER CONTROL CART LIGO BAKEOUT SYSTEM			
CAD FILE 301352	SIZE D	PAGE NO. V049-3-013	REV. 1
SCALE 1/4	SHEET 2 OF 7		

ENCLOSURE DOOR
SEE DETAIL "B-1"
THIS SHEET.

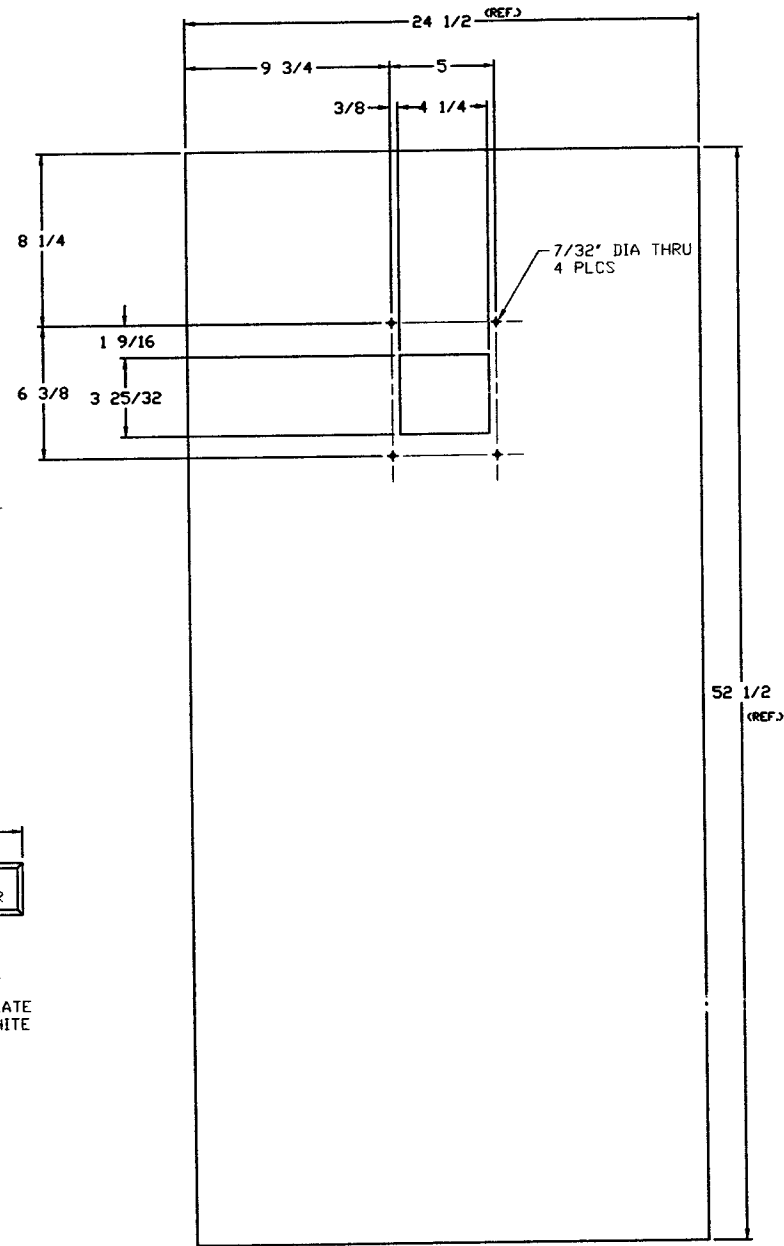
LAMICOID NAMEPLATE
SEE DETAIL "B-2"
THIS SHEET

CIRCUIT BREAKER MNTG. BRKT.
SEE DETAIL "B-3"
THIS SHEET.

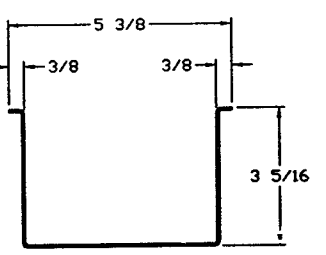
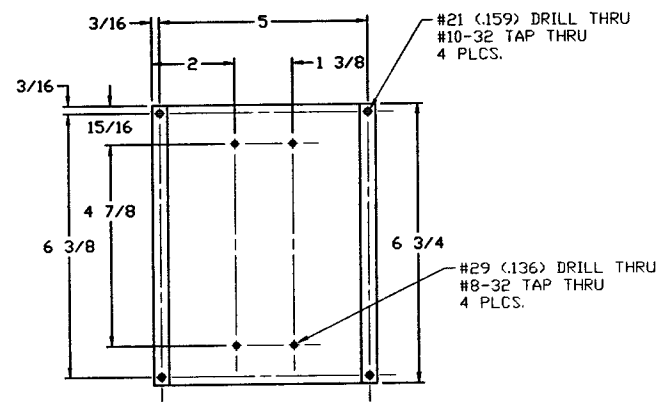
(39) (40) (41) CB-1



DETAIL "B-2"
SCALE: FULL
LAMICOID NAMEPLATE
WHITE-BLACK-WHITE



DETAIL "B-1"
DOOR ALTERATION

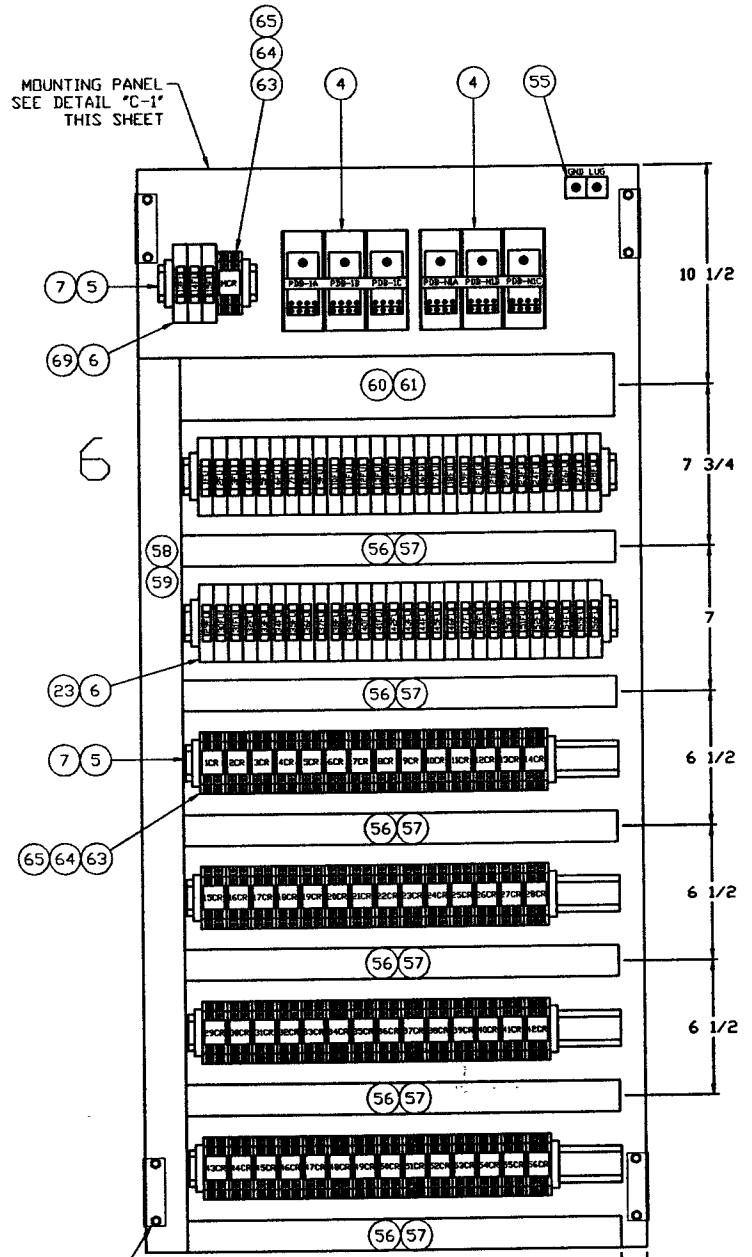


DETAIL "B-3"
SCALE: 1/2
MOUNTING BRACKET
CIRCUIT BREAKER
MATERIAL: #14 GA. CRS.

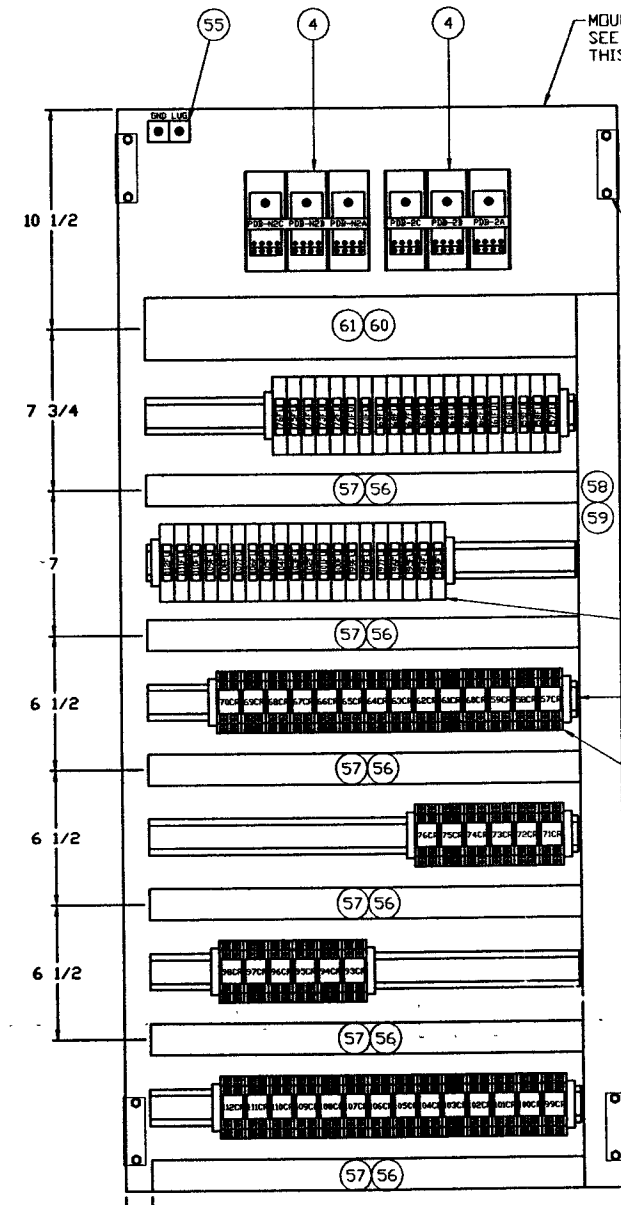
DETAIL "B"
RIGHT FRONT DOOR ASSEMBLY

APR 30 1996

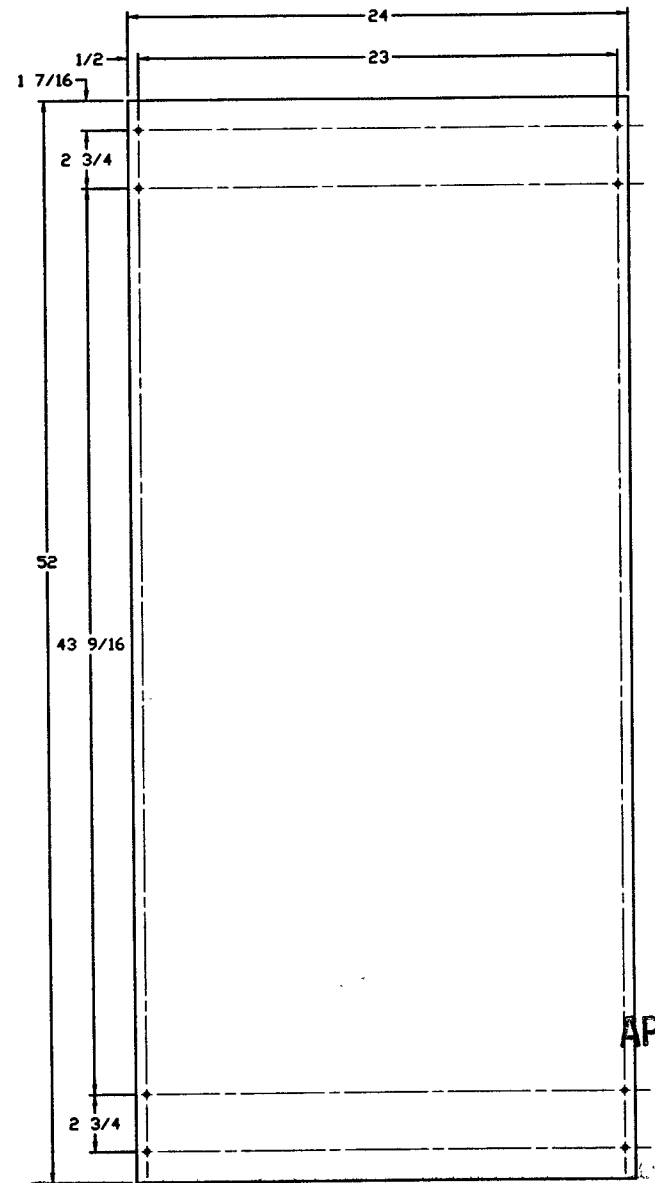
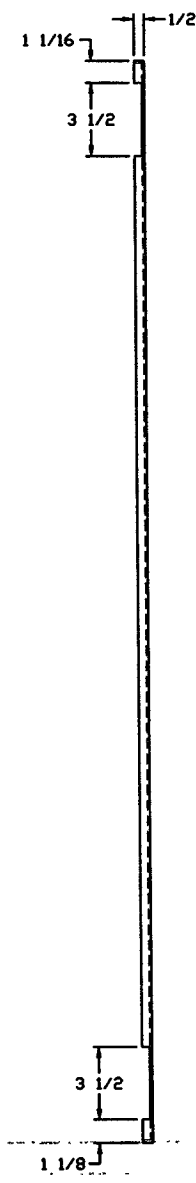
PROCESS SYSTEMS INTERNATIONAL INC. <small>20 WALKUP DR. WESTBOROUGH, MASSACHUSETTS 01581 USA</small>			
ASSEMBLY, HEATER CONTROL CART LIGO BAKEDOUT SYSTEM			
CAD FILE 301353	REV. D	DWG. NO. V049-3-013	REV. 1
SCALE 1/4	SHEET 3 OF 7		



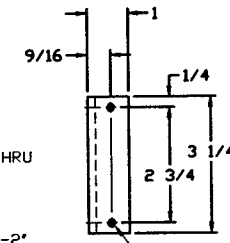
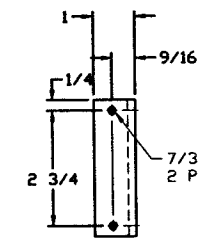
DETAIL "C"
FRONT HEATER CONTROL PANEL



DETAIL "D"
REAR HEATER CONTROL PANEL



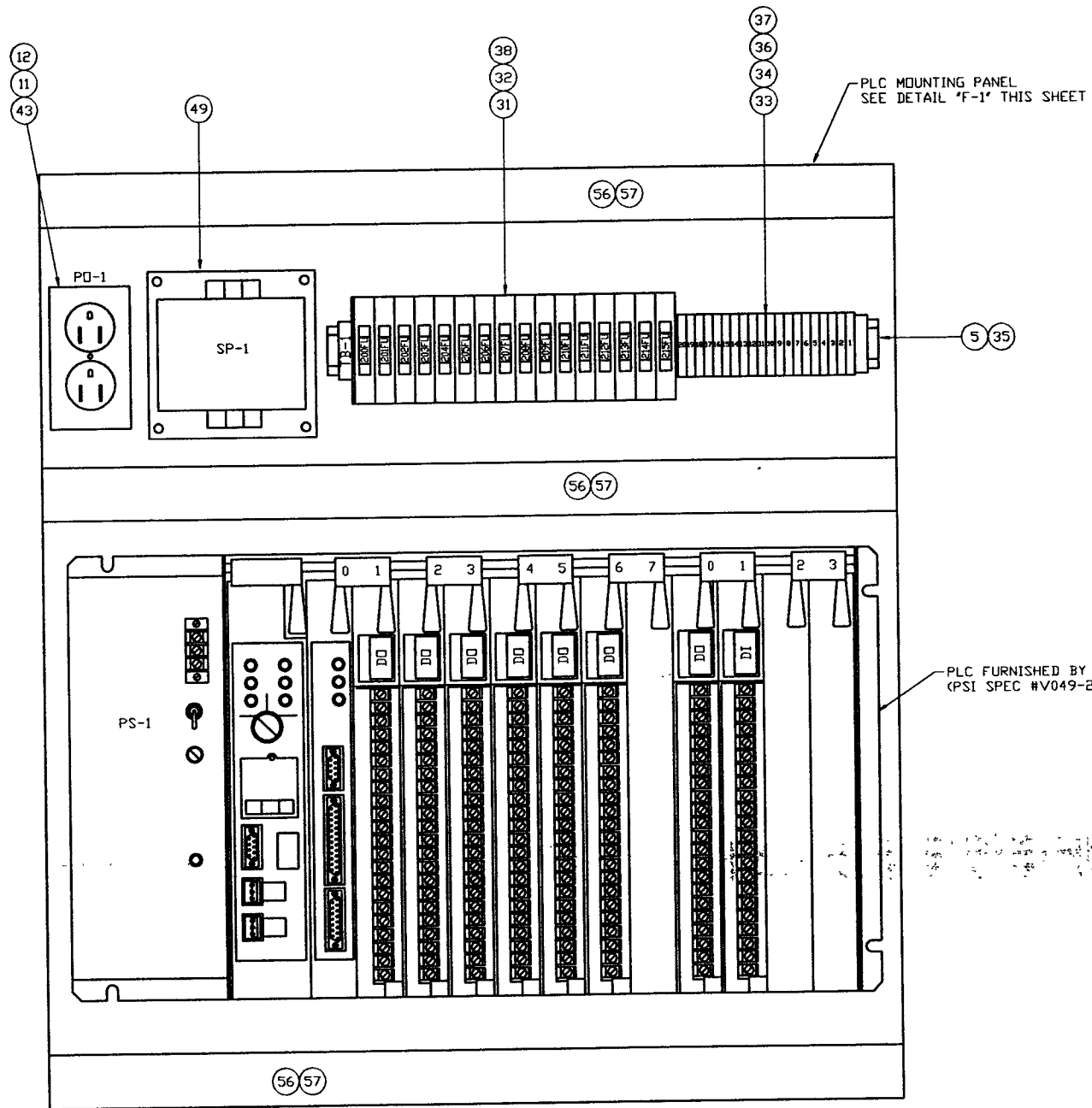
DETAIL "C-1"
MOUNTING PANEL
2 REQ'D



DETAIL "C-2"
SCALE: 1/2
PANEL MOUNTING BRACKET
MAT'L: 1" X 1" X 3/16" ANGLE
8 REQ'D

APR 30 1996

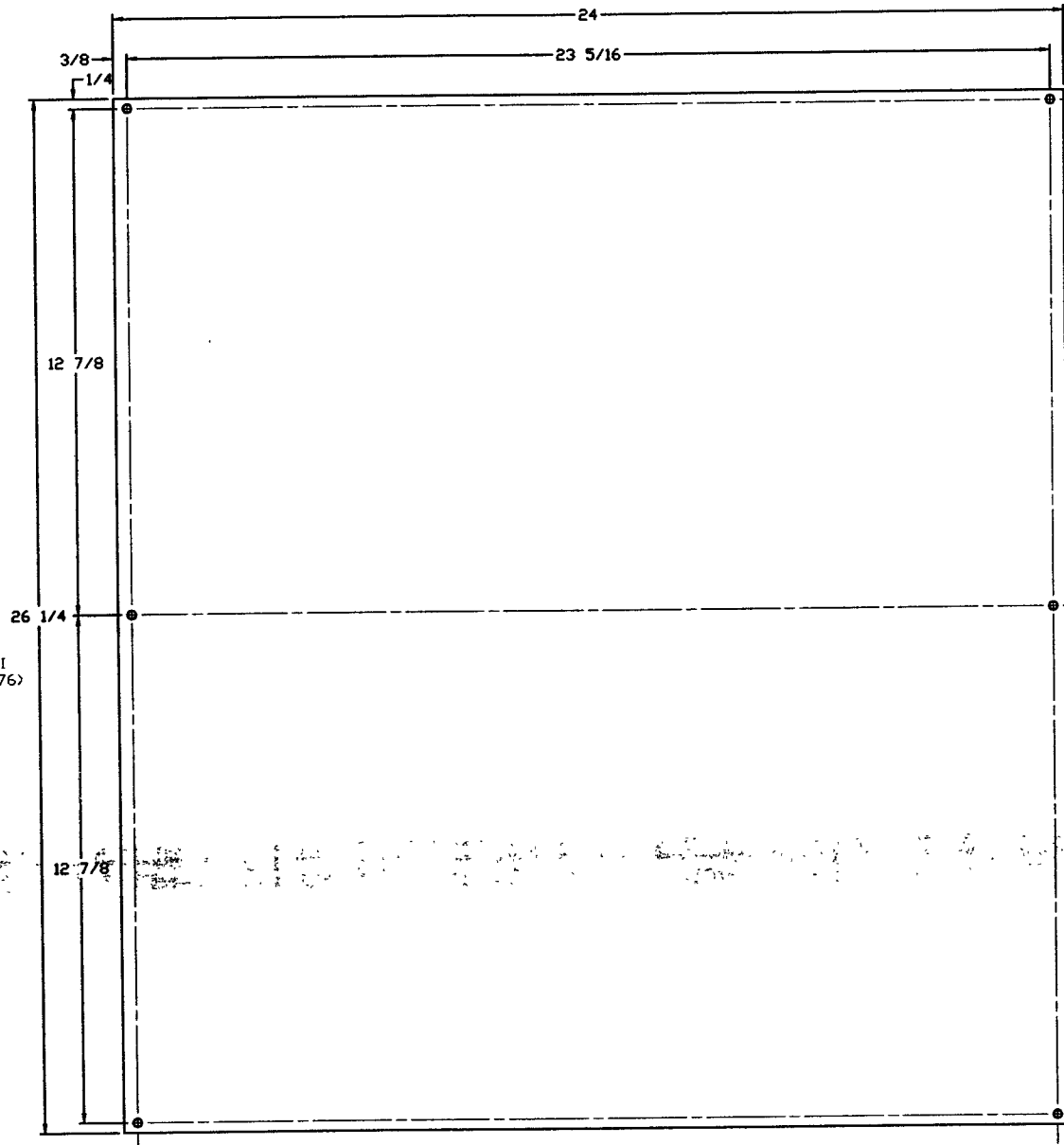
PROCESS SYSTEMS INTERNATIONAL INC. 20 WALNUP DR. WESTBOROUGH, MASSACHUSETTS 01581 USA			
ASSEMBLY, HEATER CONTROL CART LIGO BAKEOUT SYSTEM			
CAD FILE 301354	SIZE D	FIG. NO. V049-3-013	REV. 1
SCALE 1/4	SHEET 4 OF 7		



DETAIL "E"
PLC CONTROL PANEL

PLC MOUNTING PANEL
SEE DETAIL "F-1" THIS SHEET

PLC FURNISHED BY PSI
(PSI SPEC #V049-2-076)

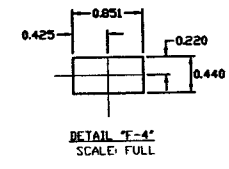
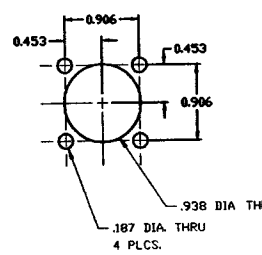
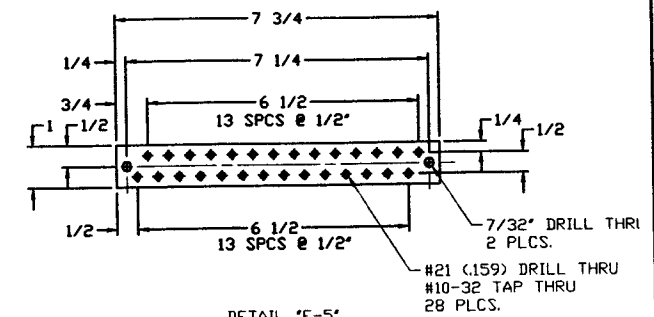


DETAIL "F-1"
PLC MOUNTING PANEL
MAT'L: #12 GA. CRS.

APR 30 1996

PROCESS SYSTEMS INTERNATIONAL INC. <small>30 WALKUP DR. WESTBOROUGH, MASSACHUSETTS 01581 USA</small>			
ASSEMBLY, HEATER CONTROL CART LIGO BAKEDOUT SYSTEM			
CAD FILE 301355	SIZE D	REV. NO. V049-3-013	REV. 1
SCALE 1/2	SHEET 5 OF 7		

REV. 02.1996 - 092425

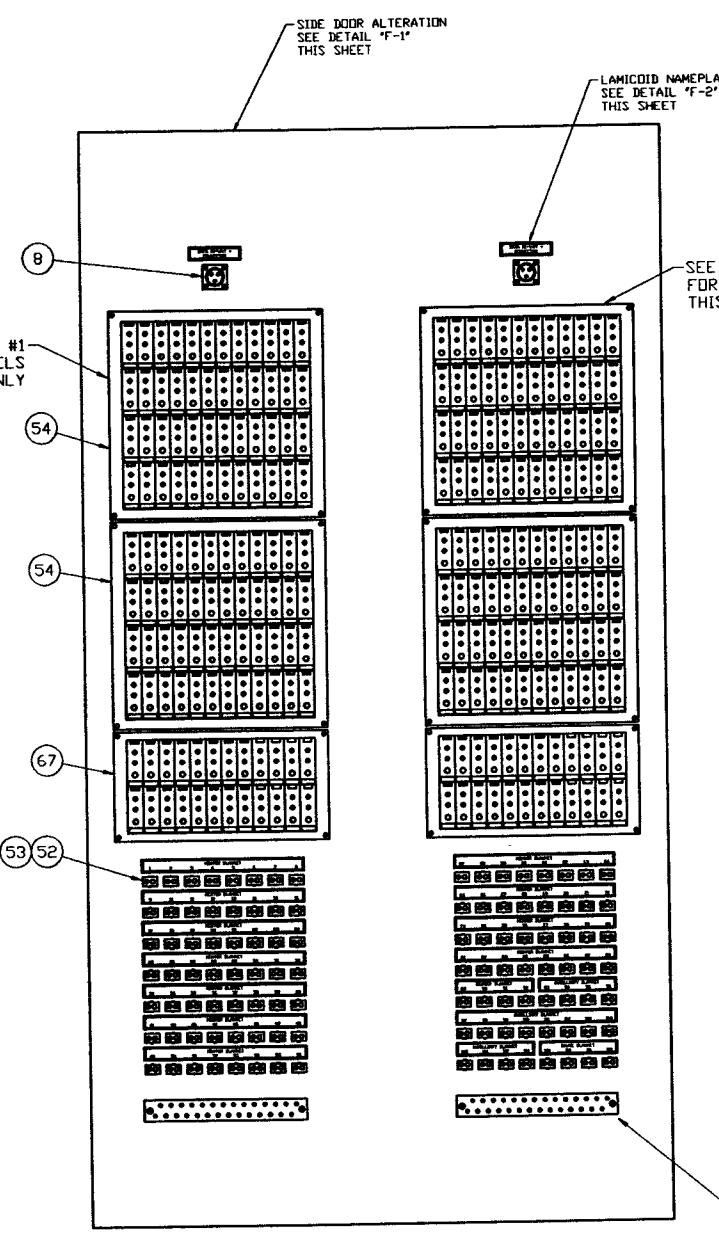
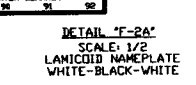
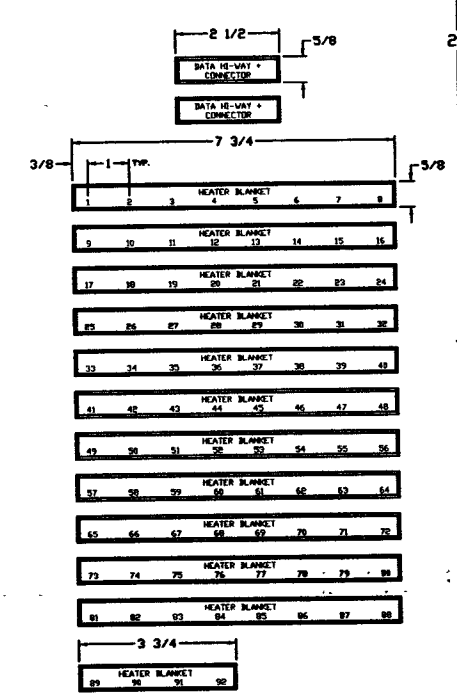
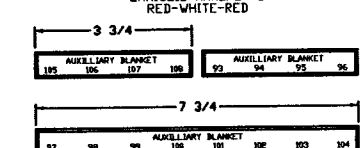
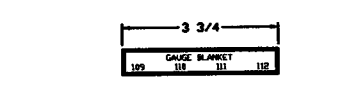
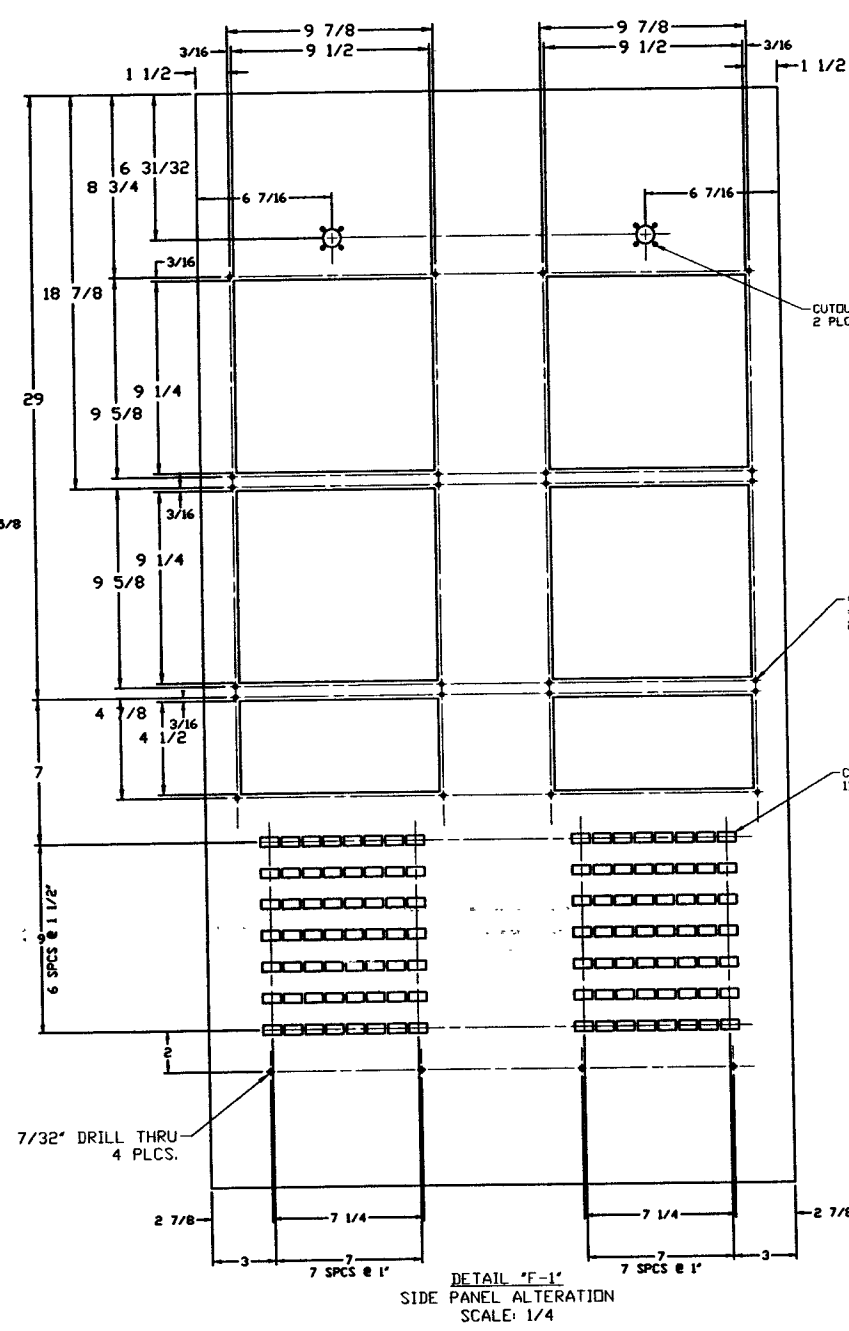


#29 (.136) DRILL THRU #8-32 TAP THRU 24 PLCS

CUTOUT PER DETAIL "F-4" 112 PLCS.

T/C CONNECTOR LABELS

TABLE 1		TABLE 2	
ROW	T/C CONNECTOR LABELS	ROW	T/C CONNECTOR LABELS
1	1A THRU 12A	1	57A THRU 68A
2	1B THRU 12B	2	57B THRU 68B
3	13A THRU 24A	3	69A THRU 80A
4	13B THRU 24B	4	69B THRU 80B
5	25A THRU 36A	5	81A THRU 92A
6	25B THRU 36B	6	81B THRU 92B
7	37A THRU 48A	7	93A THRU 104A
8	37B THRU 48B	8	93B THRU 104B
9	49A THRU 56A	9	105A THRU 112A
10	49B THRU 56B	10	105B THRU 112B



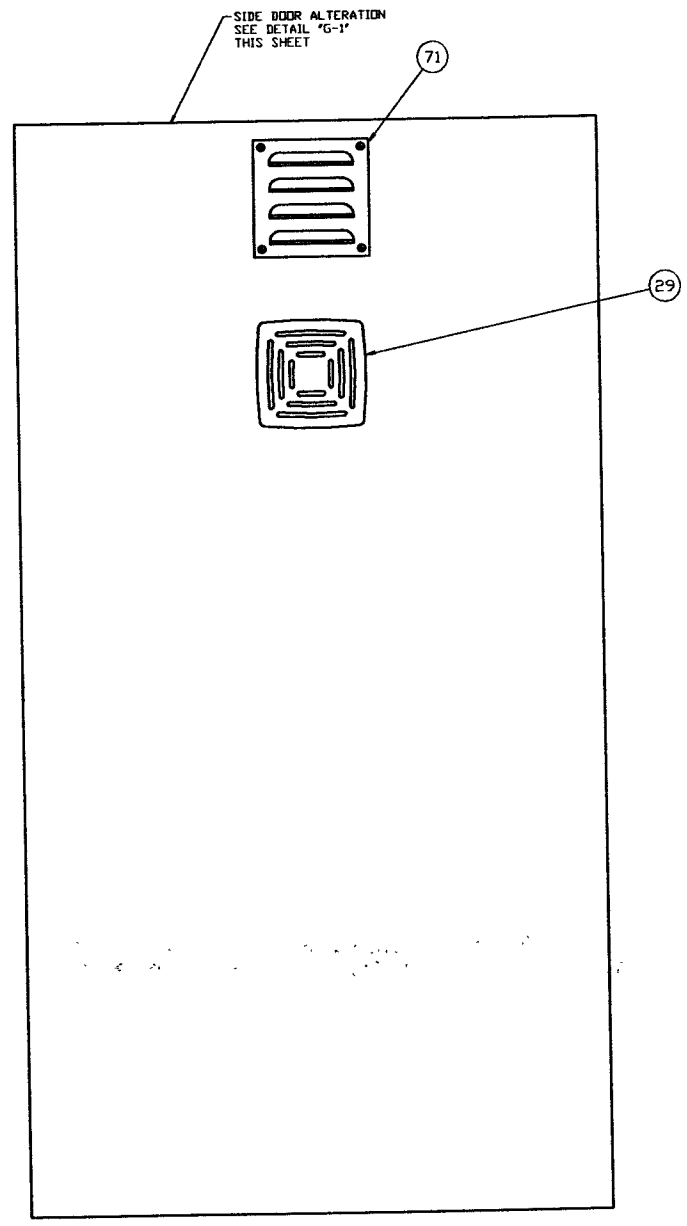
APR 30 1996

PROCESS SYSTEMS INTERNATIONAL INC.
20 WALWUP DR. WESTBOROUGH, MASSACHUSETTS 01581 USA

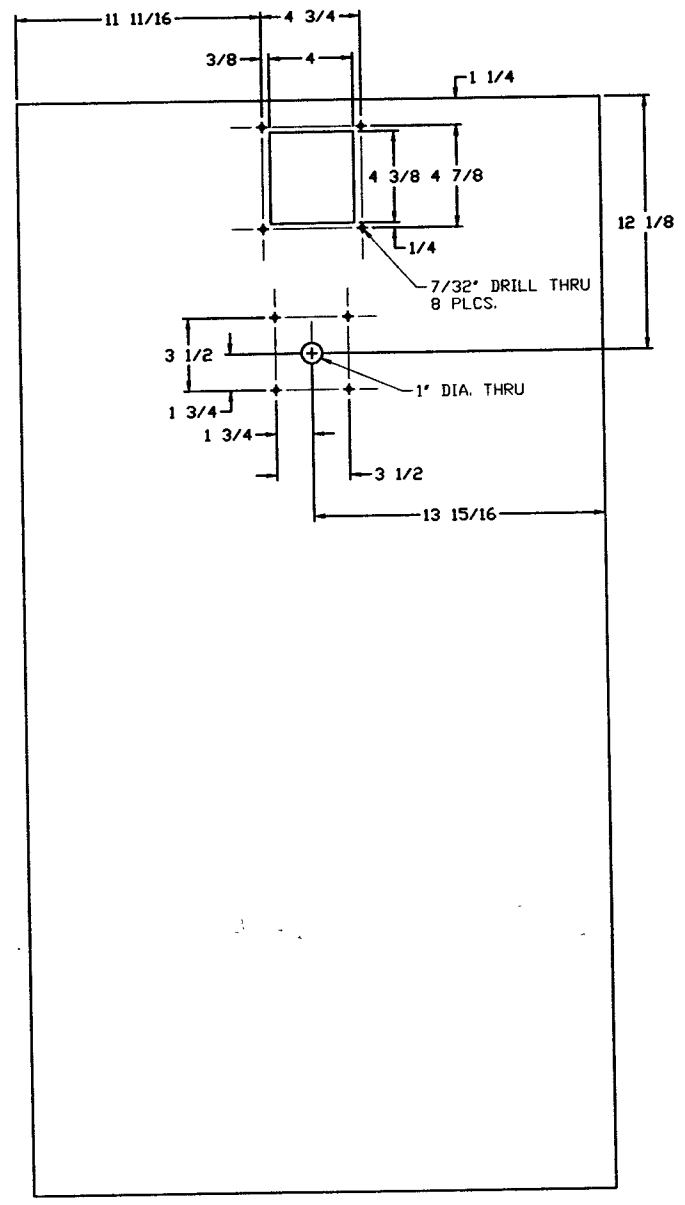
ASSEMBLY, HEATER CONTROL CART
LIGO BAKEOUT SYSTEM

CAD FILE 301356	SIZE D	REV. NO. V049-3-013	REV. 1
SCALE 1/4	SHEET 6 OF 7		

REV. 28, 1996 - 114255



DETAIL "F"
HEATER CONNECTOR PANEL



DETAIL "G-1"
SIDE PANEL ALTERATION
SCALE: 1/4

APR 30 1996

PROCESS SYSTEMS INTERNATIONAL INC. <small>30 HAWKUP DR. WESTBOROUGH, MASSACHUSETTS 01581 USA</small>			
ASSEMBLY, HEATER CONTROL CART LIGD BAKEOUT SYSTEM			
CAD FILE 3013S7	SIZE D	DRWG. NO. V049-3-013	REV. 1
SCALE 1/4	SHEET 7 OF 7		

NO. 22 1996 - 051840