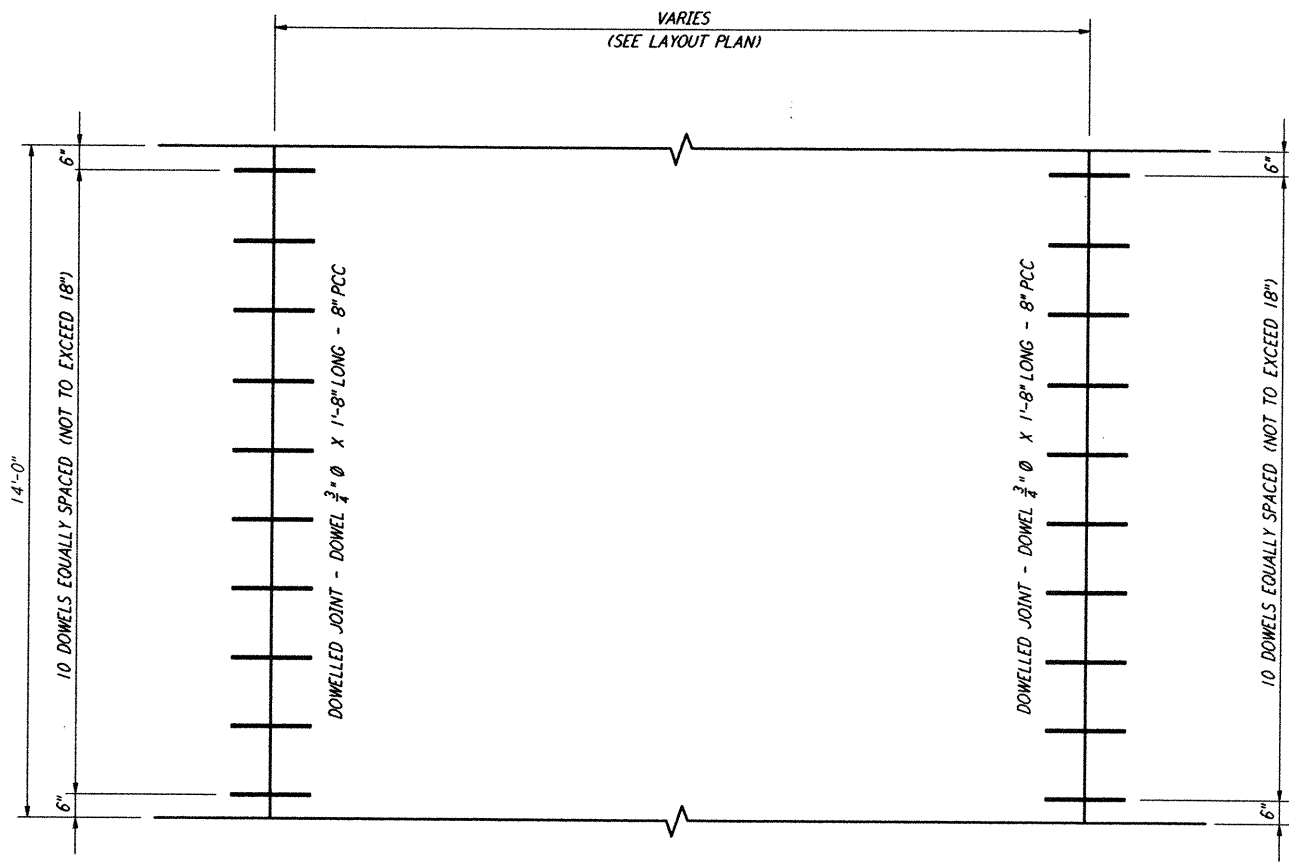
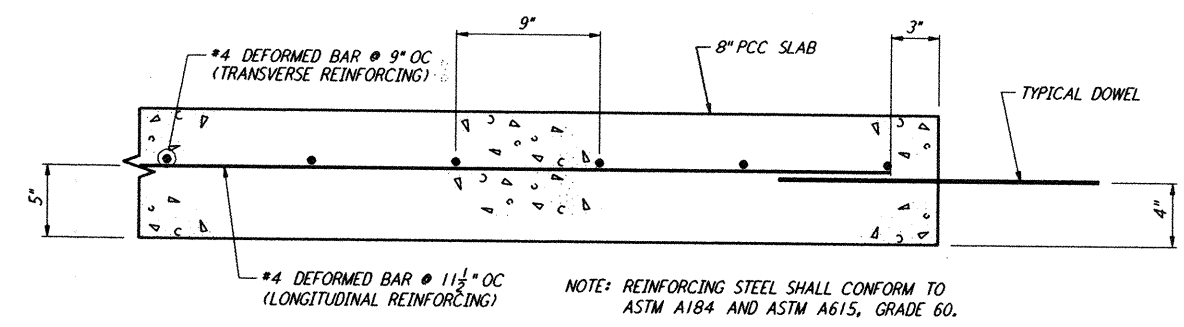


Tue Sep 10 13:03:22 1996 s3-v18b2 J:\PLOTS\SEQUENCES\18B2\ST508.PRF

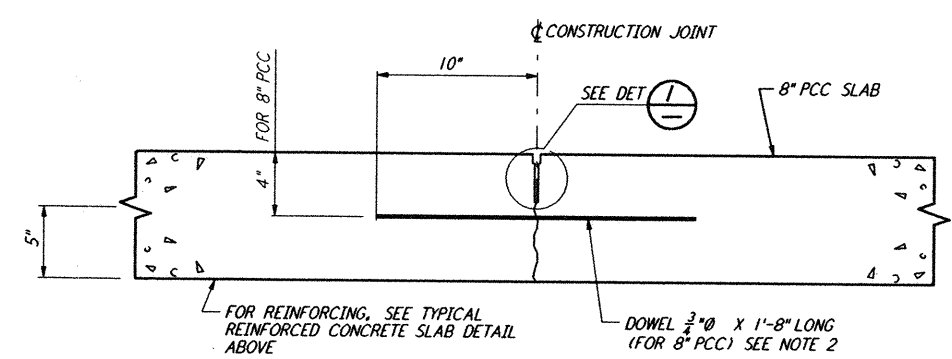
This document and the design it covers are the property of PARSONS. They are loaned only with the borrower's expressed written agreement that they will not be reproduced, copied, loaned, exhibited, or used in any other way, except by written consent from PARSONS to the borrower.



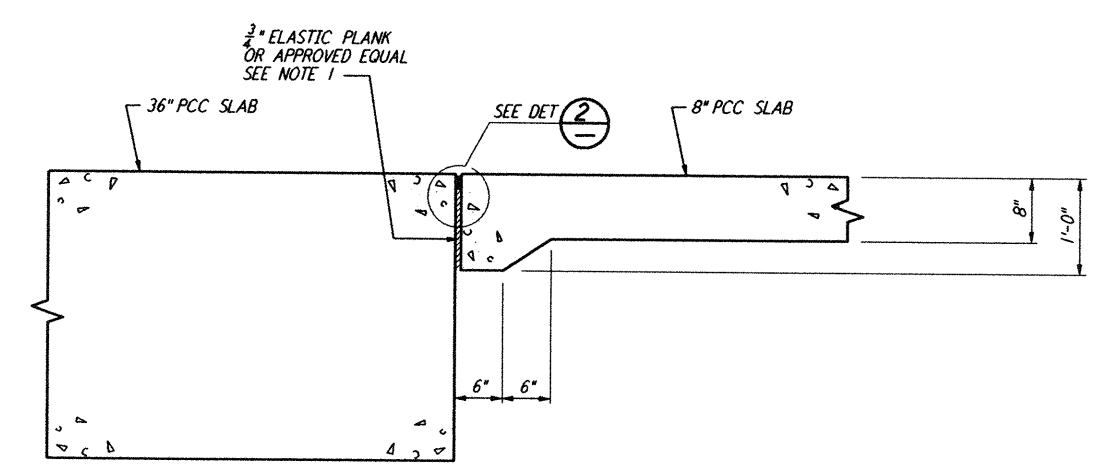
TYPICAL DOWEL PLACEMENT
NO SCALE



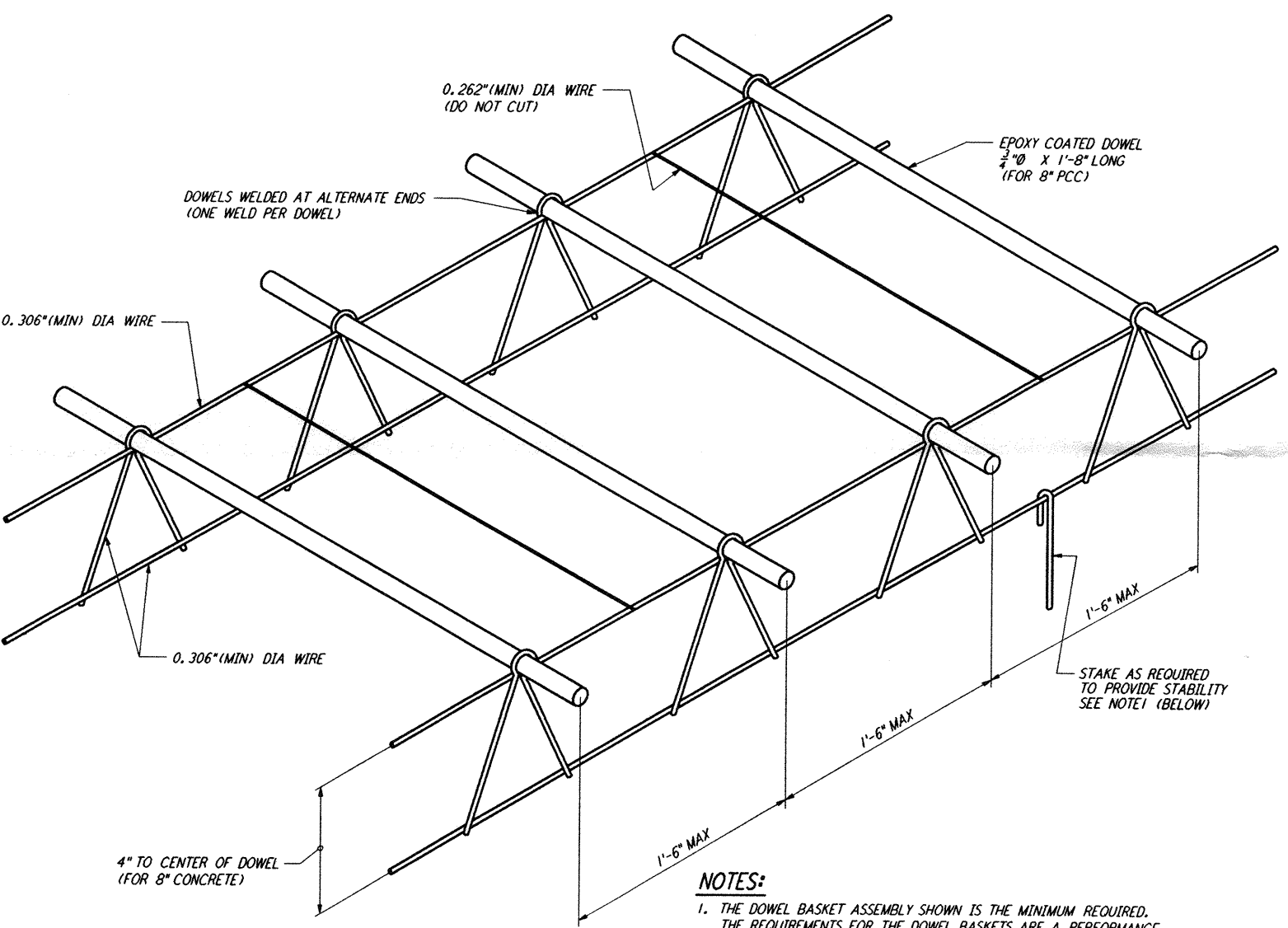
TYPICAL REINFORCED CONCRETE SLAB
NO SCALE



CONSTRUCTION JOINT (DOWELLED SAWED JOINT) - TYPE B
NO SCALE

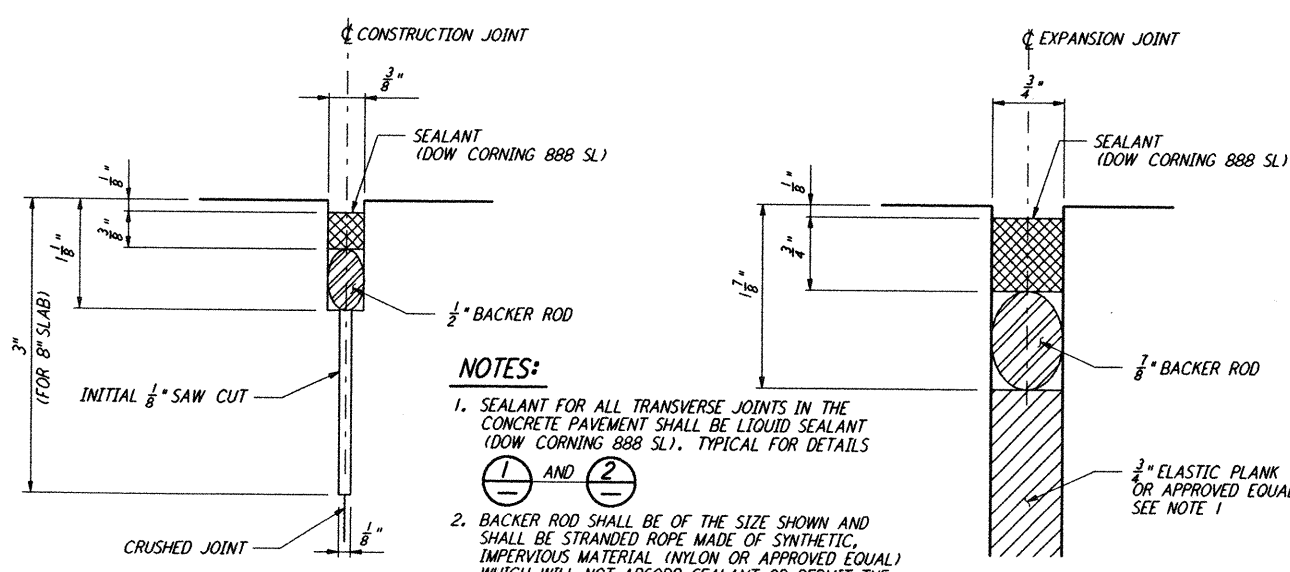


EXPANSION JOINT - TYPE A
NO SCALE



- NOTES:**
1. THE DOWEL BASKET ASSEMBLY SHOWN IS THE MINIMUM REQUIRED. THE REQUIREMENTS FOR THE DOWEL BASKETS ARE A PERFORMANCE SPECIFICATION AND IT WILL BE REQUIRED THAT THE CONTRACTOR PROVIDE SUFFICIENT SUPPORT, BRACING AND ANCHORAGE SO THAT THE AS CONSTRUCTED DOWELS WILL MEET THE TOLERANCE SPECIFICATIONS.
 2. DOWELS TO MEET ASTM A617-GR-60.
 3. DOWELS TO BE EPOXY COATED TO MEET AASHTO M-254-B, 7.0 MILS MIN.
 4. DOWELS TO BE EPOXY COATED, INCLUDING THE ENDS.
 5. DOWELS TO BE LUBRICATED IN THE FIELD.
 6. DOWEL ASSEMBLY LENGTH AS REQUIRED.

DOWEL BASKET ASSEMBLY
NO SCALE SEE NOTE 1 (ABOVE)



DETAIL 1
NO SCALE

DETAIL 2
NO SCALE

- NOTES:**
1. SEALANT FOR ALL TRANSVERSE JOINTS IN THE CONCRETE PAVEMENT SHALL BE LIQUID SEALANT (DOW CORNING 888 SL). TYPICAL FOR DETAILS 1 AND 2.
 2. BACKER ROD SHALL BE OF THE SIZE SHOWN AND SHALL BE STRANDED ROPE MADE OF SYNTHETIC IMPERVIOUS MATERIAL (NYLON OR APPROVED EQUAL) WHICH WILL NOT ABSORB SEALANT OR PERMIT THE SEALANT TO FLOW PAST THE ROPE. BACKER ROD SHALL BE HBR-XL AS MANUFACTURED BY HERCULES INC. OR APPROVED EQUAL.

NO.	DATE	BY	CHKD	ENGR	PROJ	DESCRIPTION
A	9-10-96	MCS	ADM	HT	EDM	BID ADDENDUM #2

DRAWN	MCS
CHECKED	
ENGINEER	
PROJ	

PARSONS
 100 WEST WALNUT STREET
 PASADENA, CALIFORNIA

LIGO
 CALIFORNIA INSTITUTE OF TECHNOLOGY
 MASSACHUSETTS INSTITUTE OF TECHNOLOGY

LASER INTERFEROMETER
 GRAVITATIONAL-WAVE OBSERVATORY
 BEAM TUBE ENCLOSURE - LIVINGSTON, LA

SCALE: PP150969 B094
 SHEET NUMBER: LA-S-508