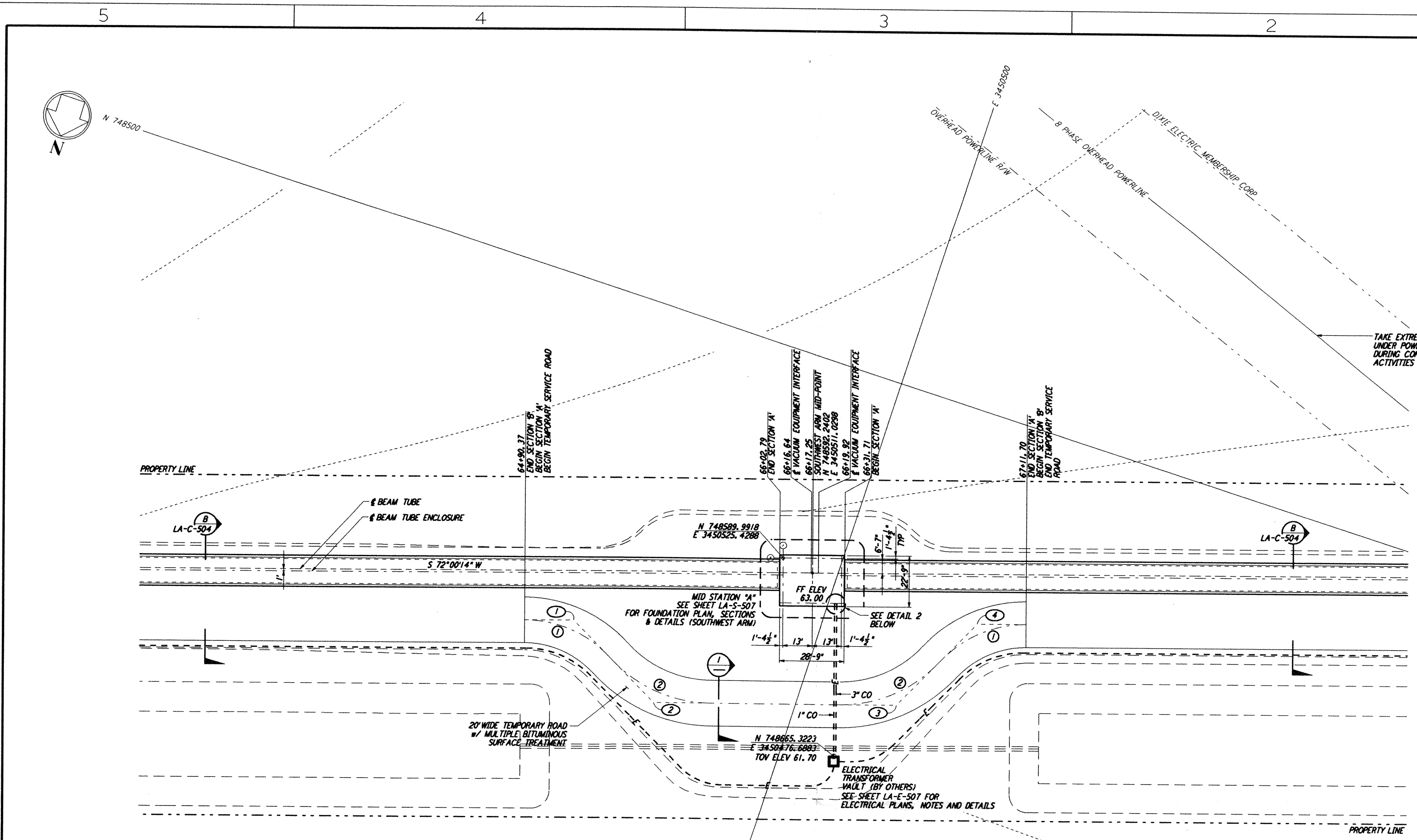


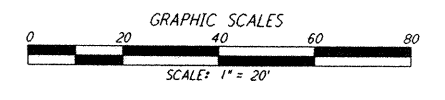
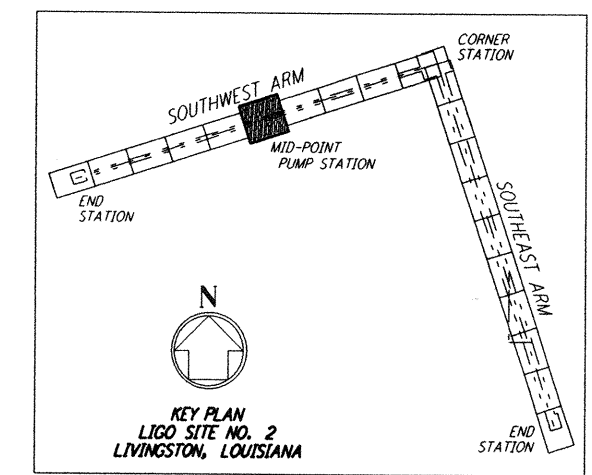
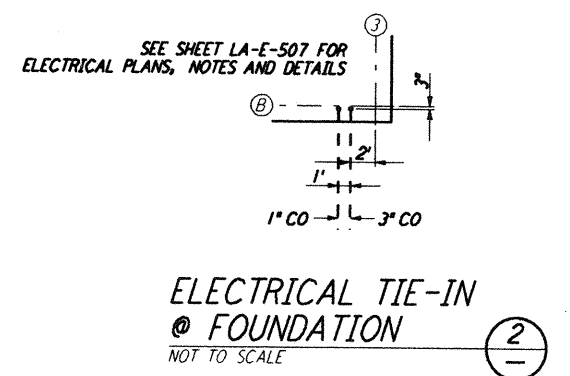
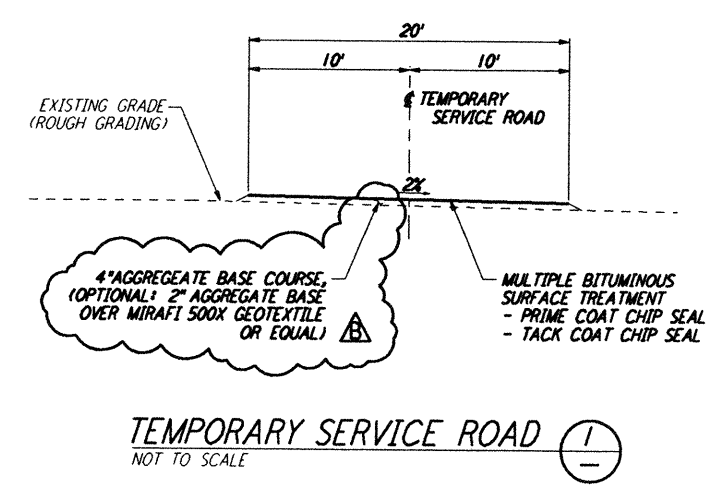
Mon Sep 09 16:31:11 1996 s3-v18b2 J:\PLOTS\QUEUES\18B2\CE521A.PRF
 This document and the design it covers are the property of PARSONS. They are loaned only with the borrower's expressed written agreement that they will not be reproduced, copied, loaned, exhibited, or used in any other way, except by written consent from PARSONS to the borrower.



NOTES:
 1. SEE SHEET LA-C-502 FOR GENERAL NOTES, LEGEND AND ABBREVIATIONS.
 2. SEE SHEET LA-C-504 FOR TYPICAL SECTIONS AND DETAILS.

CURVE DATA					
Δ	RADIUS	LENGTH	TANGENT	REMARK	
1 45°00'00"	52'	40.84'	21.54'	PI @ TEMPORARY ROAD	
2 45°00'00"	60'	47.12'	24.85'	PI @ TEMPORARY ROAD	

COORDINATES			
	NORTH	EAST	REMARK
1	748645.7089	3450604.4199	PI @ TEMPORARY ROAD
2	748668.4802	3450559.7285	PI @ TEMPORARY ROAD
3	748635.3154	3450457.6570	PI @ TEMPORARY ROAD
4	748590.6389	3450434.8926	PI @ TEMPORARY ROAD



NO.	DATE	BY	CHKD	ENGR	PROJ	DESCRIPTION
B	9/10/96	WRB	ML	JB	TDM	BID ADDENDUM NO. 2
A	6/28/96	WRB	ML	JB	TDM	FINAL DESIGN REVIEW

DRAWN	WRB	6/24/96
CHECKED		
ENGINEER		
PROJ		

PARSONS
 100 WEST WALNUT STREET
 PASADENA, CALIFORNIA

LIGO
 CALIFORNIA INSTITUTE OF TECHNOLOGY
 MASSACHUSETTS INSTITUTE OF TECHNOLOGY

**LASER INTERFEROMETER
 GRAVITATIONAL-WAVE OBSERVATORY
 BEAM TUBE ENCLOSURE - LIVINGSTON, LA**
 CIVIL
 SOUTHWEST ARM
 PUMP STATION
 PLOT AND UTILITY PLAN
LA-C-521

SCALE: 1" = 20'
 CONTRACT NUMBER: PPI50969
 PROJECT NUMBER: 8094
 SHEET NUMBER: 2