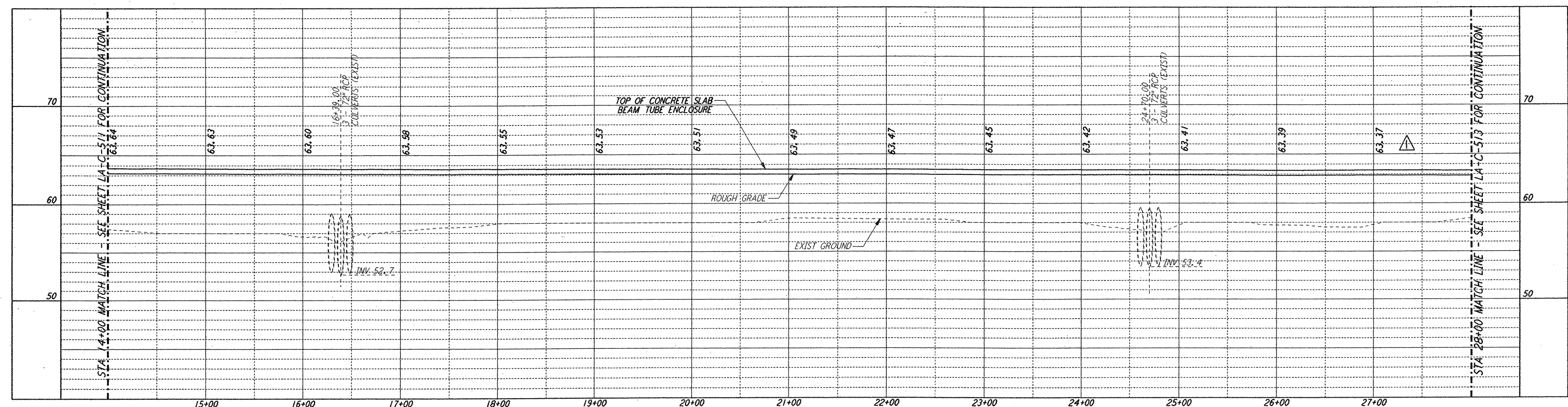
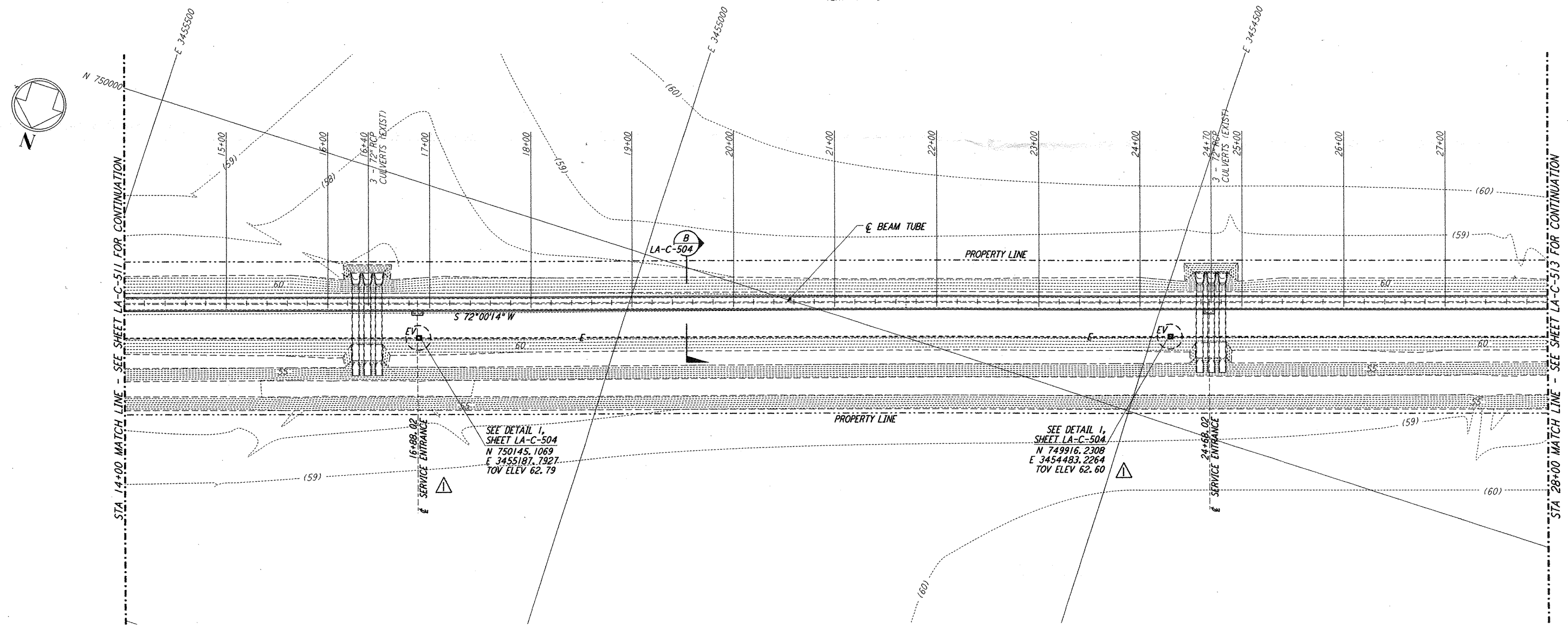


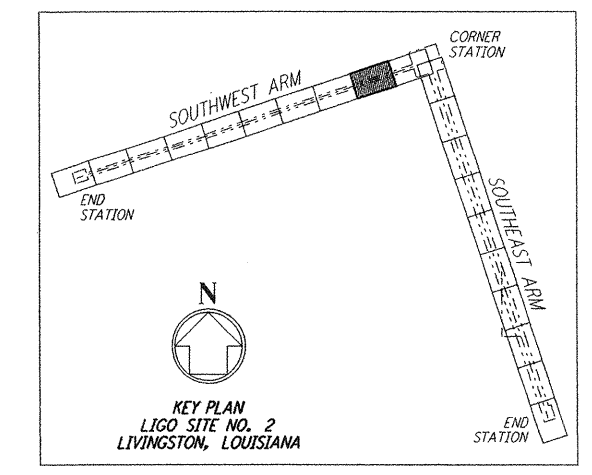
**NOTES:**  
 1. SEE SHEET LA-C-502 FOR GENERAL NOTES, LEGEND AND ABBREVIATIONS.  
 2. SEE SHEET LA-C-504 FOR TYPICAL SECTIONS AND DETAILS.



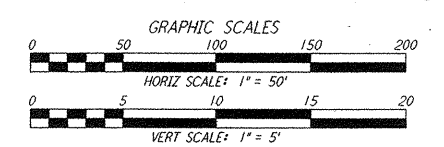
**PROFILE**  
 SCALES: HORIZ: 1" = 50'  
 VERT: 1" = 5'



**PLAN**  
 SCALE: 1" = 50'



**LIGO-D961264-02-0**



NO.	DATE	BY	CHKD	ENGR	PROJ	DESCRIPTION
2	1-15-99	MEI			MDW	ISSUED FOR AS-BUILT
1	2-3-97	WRB				AS-BUILT CULVERTS, REV SERVICE ENTRANCE, ELEC VAULT, P...

ISSUED FOR CONSTRUCTION			
DRAWN	WRB	11-15-96	
CHECKED	ME	11-15-96	
ENGINEER	JB	11-15-96	
PROJ	TDM	11-15-96	
<b>AS-BUILT DRAWINGS</b>			

**PARSONS**  
 100 WEST WALNUT STREET  
 PASADENA, CALIFORNIA

**LIGO**  
 CALIFORNIA INSTITUTE OF TECHNOLOGY  
 MASSACHUSETTS INSTITUTE OF TECHNOLOGY

LASER INTERFEROMETER  
 GRAVITATIONAL-WAVE OBSERVATORY  
 BEAM TUBE ENCLOSURE - LIVINGSTON, LA

TITLE	CIVIL	SCALE	CONTRACT NUMBER	PROJECT NUMBER
	SOUTHWEST ARM	AS NOTED	PP150969	8094
	PLAN AND PROFILE			
	STA 14+00 TO STA 28+00			

**LA-C-512**

This document and the design it covers are the property of PARSONS. They are loaned only with the borrower's expressed written agreement that they will not be reproduced, copied, loaned, exhibited, or used in any other way, except by written consent from PARSONS to the borrower.

E  
 D  
 C  
 B  
 A