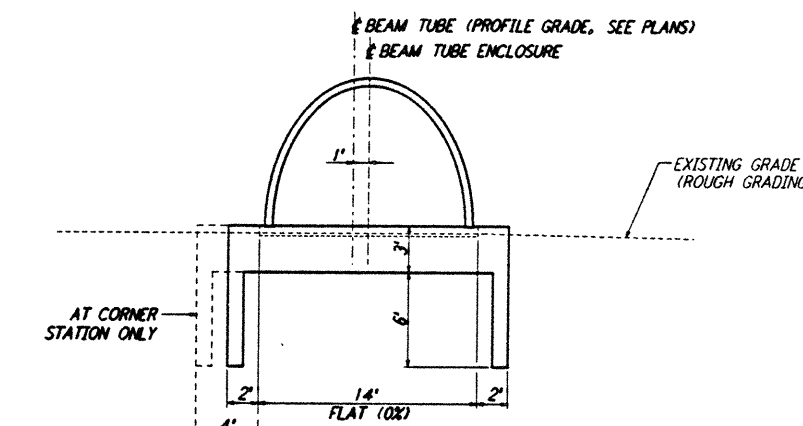


SECTION A
NOT TO SCALE
REF: LA-C-504, LA-C-505, LA-C-511, LA-C-515, LA-C-520, LA-C-531, LA-C-535, LA-C-540

SOUTHWEST ARM: STA 1+72.48 THRU STA 5+84.85
STA 64+90.37 THRU STA 66+04.96
STA 66+33.87 THRU STA 67+11.70
STA 128+56.67 THRU STA 130+64.05

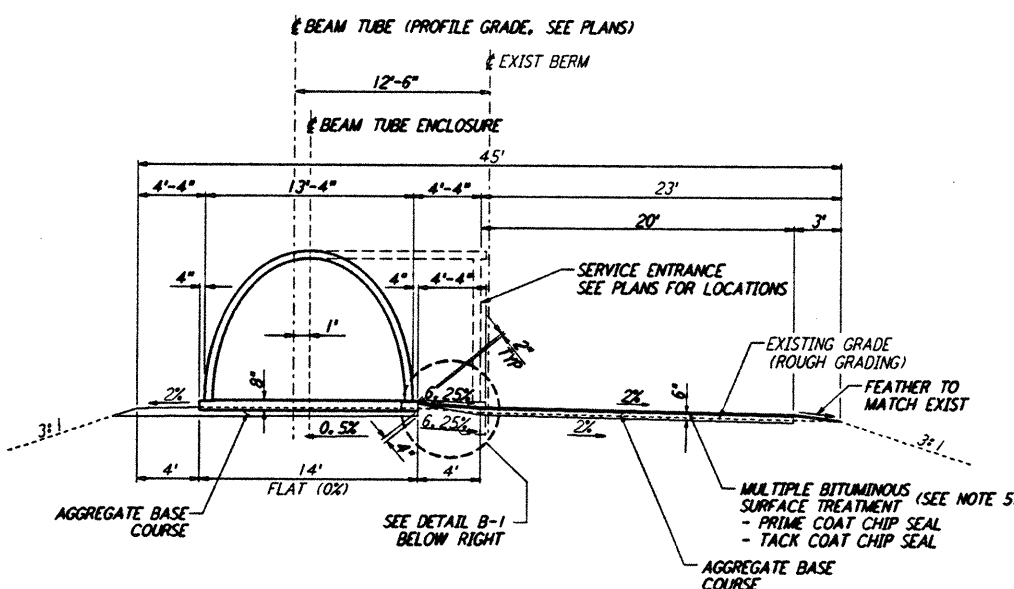
SOUTHEAST ARM: STA 1+72.48 THRU STA 4+54.37
STA 64+90.37 THRU STA 66+04.95
STA 66+33.86 THRU STA 67+11.70
STA 128+56.67 THRU STA 130+64.05



SECTION A (SIM)
NOT TO SCALE
REF: LA-C-504, LA-C-505, LA-C-511, LA-C-520, LA-C-531, LA-C-540

SOUTHWEST ARM: STA 1+47.48 THRU STA 1+72.48
STA 130+64.05 THRU STA 130+89.05

SOUTHEAST ARM: STA 1+47.48 THRU STA 1+72.48
STA 130+64.05 THRU STA 130+89.05

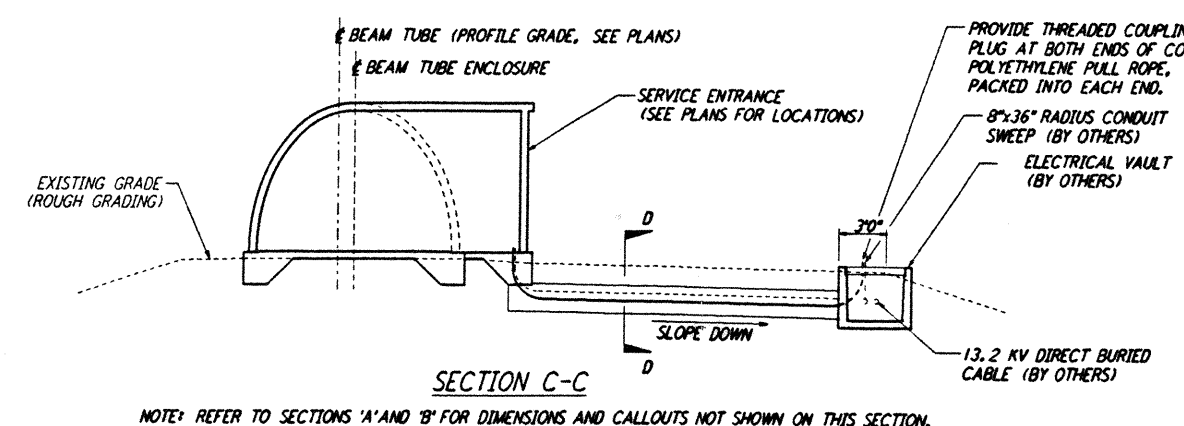


SECTION B
NOT TO SCALE
REF: LA-C-504, LA-C-505, LA-C-511 THRU LA-C-520, LA-C-531 THRU LA-C-540

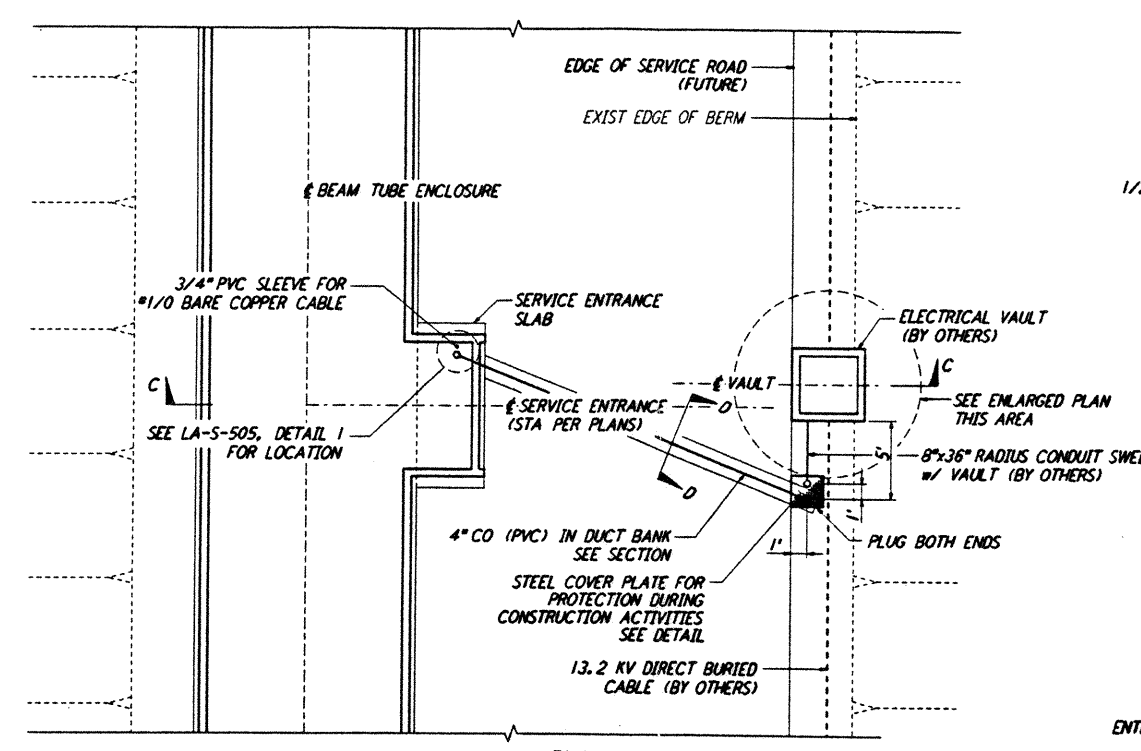
(ALONG SOUTHWEST AND SOUTHEAST ARMS)

SOUTHWEST ARM: STA 5+84.85 THRU STA 64+90.37
STA 67+11.70 THRU STA 128+56.67

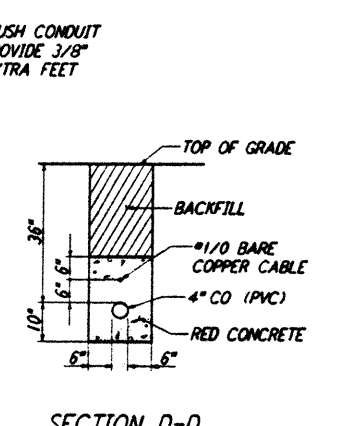
SOUTHEAST ARM: STA 4+54.37 THRU STA 64+90.37
STA 67+11.70 THRU STA 128+56.67



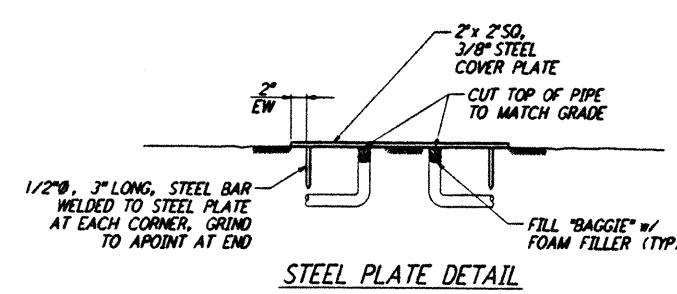
SECTION C-C
NOTE: REFER TO SECTIONS 'A' AND 'B' FOR DIMENSIONS AND CALLOUTS NOT SHOWN ON THIS SECTION.



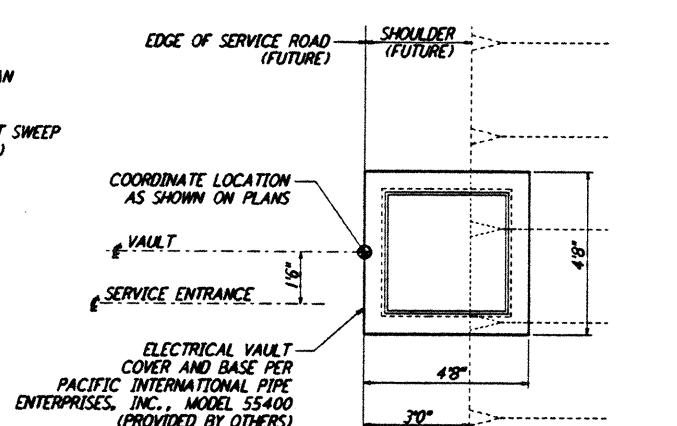
TYPICAL LOCATION PLAN @ SERVICE ENTRANCE FOR ELECTRICAL VAULT
NOT TO SCALE
REF: LA-C-504, LA-C-505, LA-C-511 THRU LA-C-514, LA-C-516 THRU LA-C-519, LA-C-531 THRU LA-C-534, LA-C-536 THRU LA-C-539



SECTION D-D

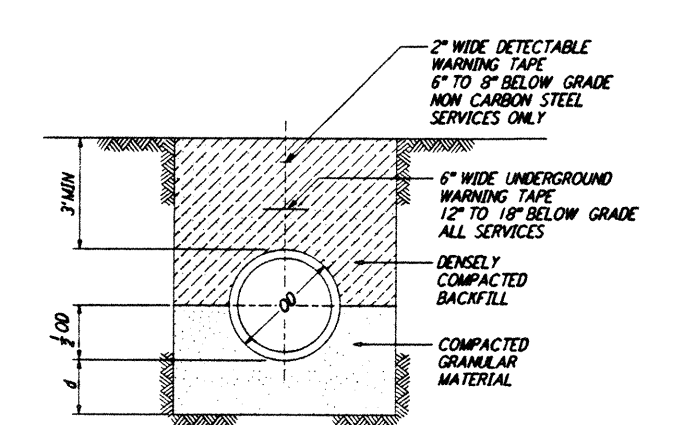


STEEL PLATE DETAIL



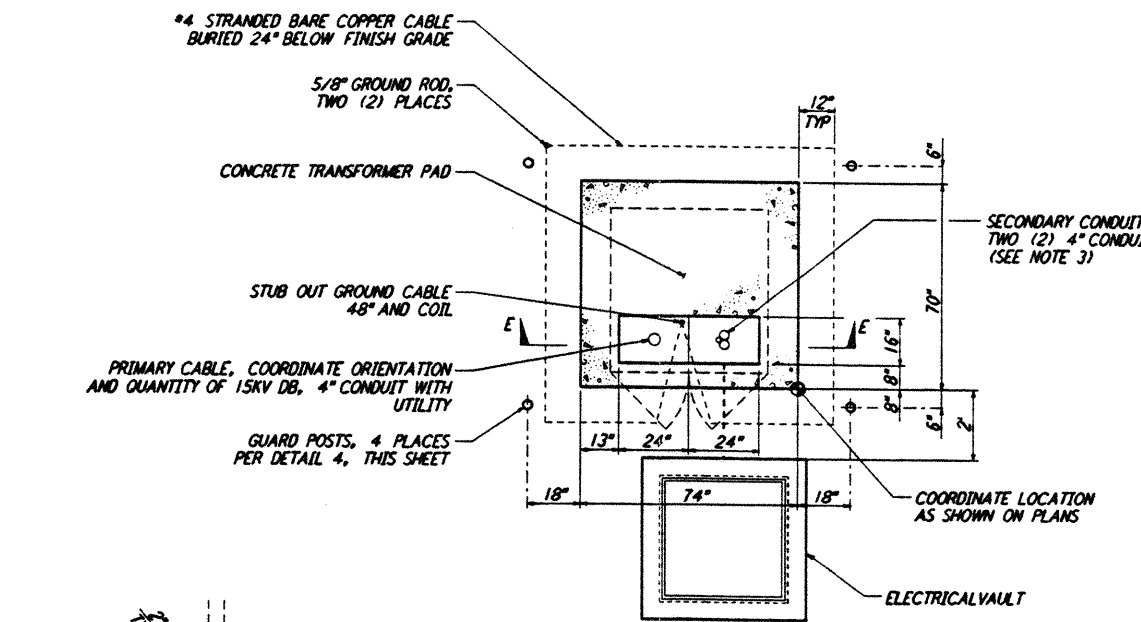
ENLARGED PLAN @ VAULT

- NOTES:
- SEE SHEET LA-C-502 FOR GENERAL NOTES, LEGEND AND ABBREVIATIONS.
 - FOR SOUTHWEST ARM, SECTIONS 'A' AND 'A (SIM)' ARE MIRRORED ABOUT THE BEAM TUBE CENTERLINE.
 - SECONDARY CONDUIT DIRECTION SHALL FACE END STATION, AS APPROPRIATE.
 - CONDUITS SHALL EXTEND TOWARD BUILDING VIA DUCT BANK, DETAIL 4, THIS SHEET.
 - BITUMINOUS SURFACE TREATMENT TO BE APPLIED WHEN SCHEDULED BY THE CONSTRUCTION MANAGER.

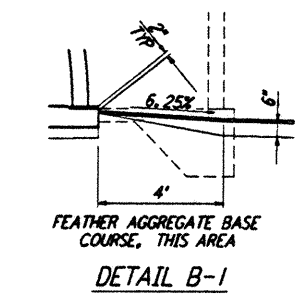


DEPTH OF BEDDING MATERIAL BELOW PIPE	
ID	d (MIN)
27" & SMALLER	3"

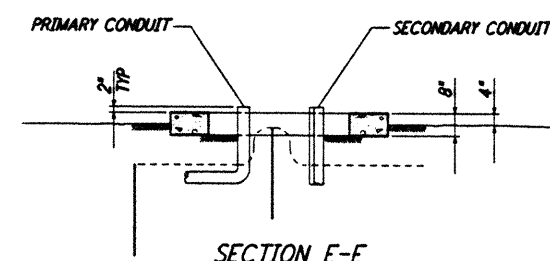
TRENCH BEDDING
NOT TO SCALE
REF: LA-C-504, LA-C-505, LA-C-511, LA-C-531



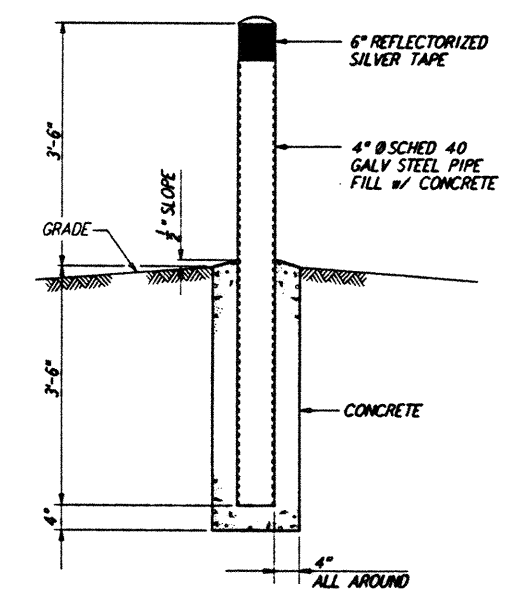
TYPICAL LOCATION PLAN FOR ELECTRICAL TRANSFORMER PAD
NOT TO SCALE
REF: LA-C-504, LA-C-520, LA-C-521, LA-C-540, LA-C-541



DETAIL B-1



SECTION E-E



GUARD POST
NOT TO SCALE
REF: LA-C-504

LIGO-D961281-01-0

ISSUED FOR CONSTRUCTION DRAWN: WRB 11-15-96 CHECKED: ML 11-15-96 ENGINEER: JB 11-15-96 PROJ: TDM 11-15-96				LASER INTERFEROMETER GRAVITATIONAL-WAVE OBSERVATORY BEAM TUBE ENCLOSURE - LIVINGSTON, LA NONE PP150969 8094 CIVIL TYPICAL SECTIONS AND DETAILS LA-C-504
1 3-20-97 WRB CL [initials] REVISED STATIONS - SECTION A NO. DATE BY CHKD ENGR PROJ DESCRIPTION	5 4 3 2	100 WEST WALNUT STREET PASADENA, CALIFORNIA	CALIFORNIA INSTITUTE OF TECHNOLOGY MASSACHUSETTS INSTITUTE OF TECHNOLOGY	LIGOLF3.BDR

This document and the design it covers are the property of PARSONS. They are loaned only with the borrower's expressed written agreement that they will not be reproduced, copied, loaned, exhibited, or used in any other way, except by written consent from PARSONS to the borrower.