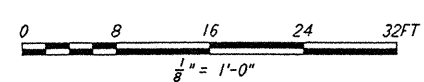
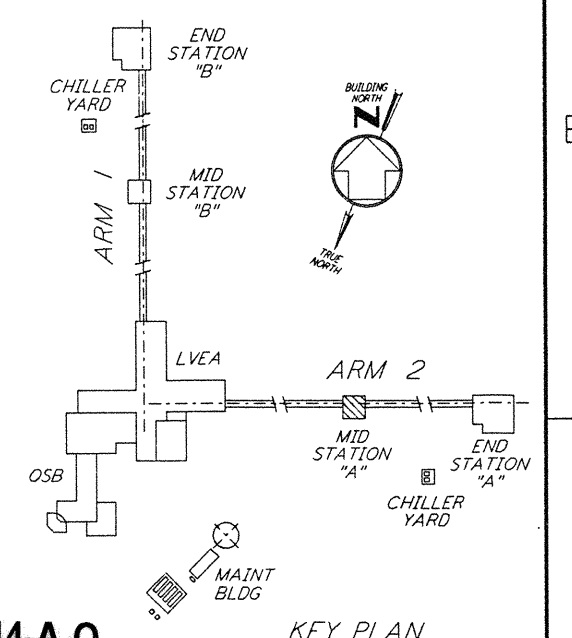
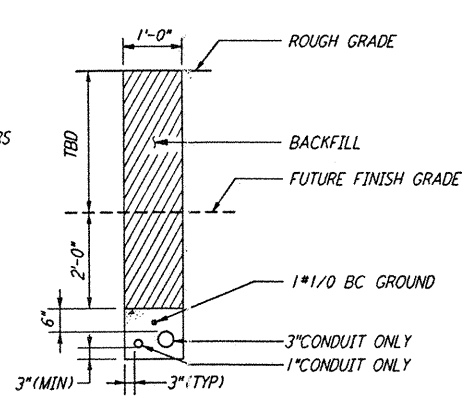
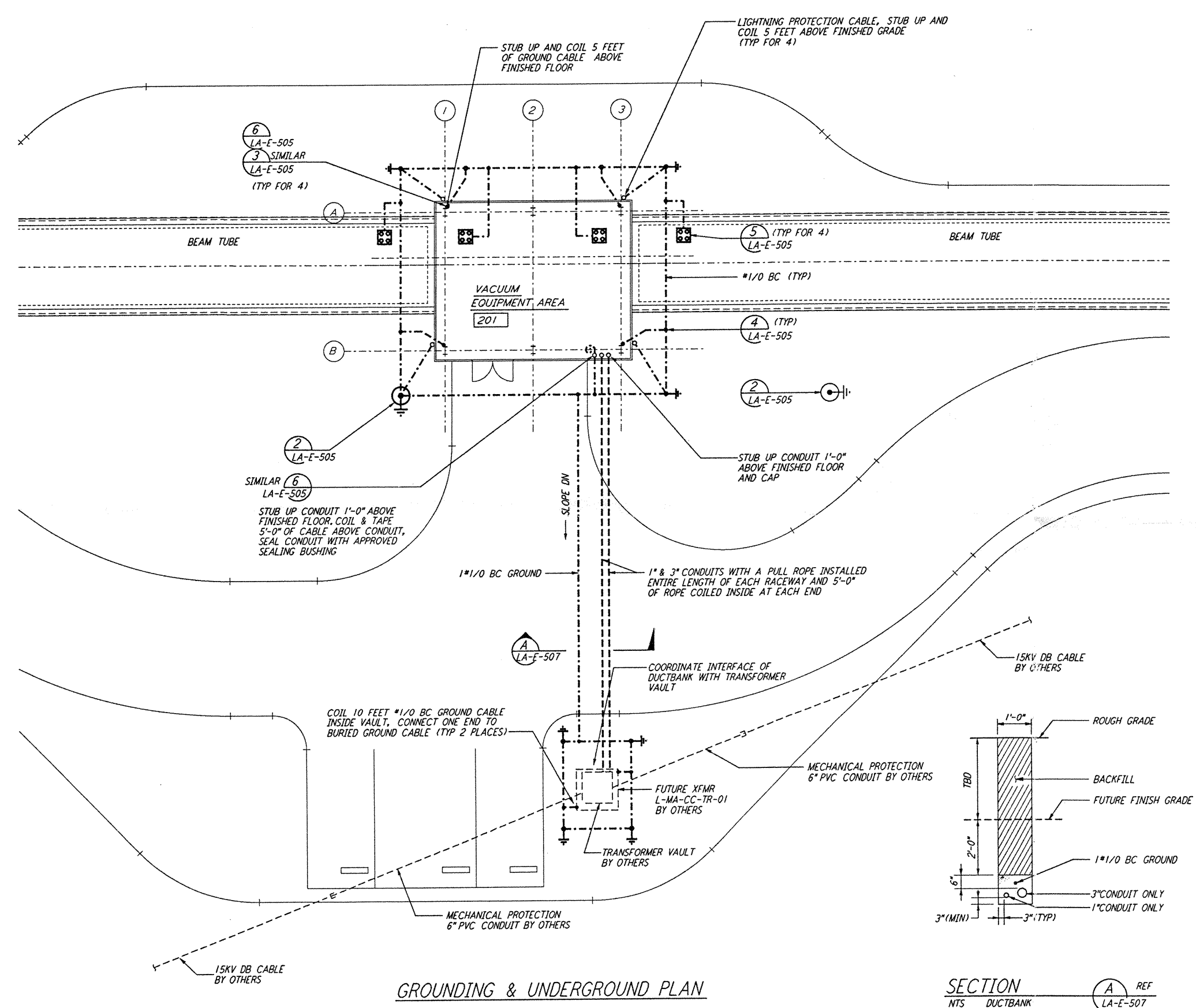


**NOTES:**

1. SEE CIVIL DRAWING LA-C-521 FOR ACTUAL LOCATION OF TRANSFORMER.
2. SEE SPECIFICATION SECTION 16670 FOR LIGHTNING PROTECTION AND GROUNDING MATERIAL.

This document and the design it covers are the property of PARSONS. They are loaned only with the borrower's expressed written agreement that they will not be reproduced, copied, loaned, exhibited, or used in any other way, except by written consent from PARSONS to the borrower.



LIGO-D961244-A-0

NO.	DATE	BY	CHKD	ENGR	PROJ	DESCRIPTION
A	6-14-96	TDM				FINAL DESIGN REVIEW

DRAWN	M. M.
CHECKED	
ENGINEER	
PROJ	

**PARSONS**  
 100 WEST WALNUT STREET  
 PASADENA, CALIFORNIA

**LIGO**  
 CALIFORNIA INSTITUTE OF TECHNOLOGY  
 MASSACHUSETTS INSTITUTE OF TECHNOLOGY

LASER INTERFEROMETER  
 GRAVITATIONAL-WAVE OBSERVATORY  
 SITE NO. 2 - LIVINGSTON, LOUISIANA

TITLE	ELECTRICAL MID STATION A GROUNDING & UNDERGROUND PLAN	SHEET NUMBER	AS NOTED PP150969	8094
REVISIONS	LA-E-507			

LIGO-D961244-A-0

LIGOLAF3.BDR