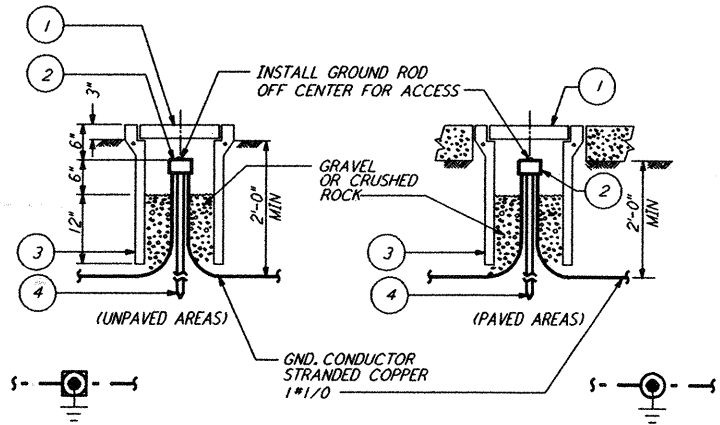
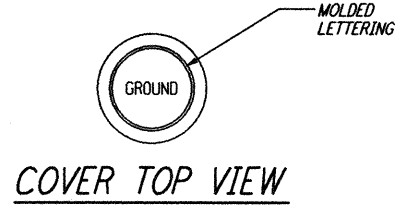


NOTE:  
 IF GROUNDING PAD IS NOT PROVIDED, INSTALL SERVIT POST IN XFMR/EQUIPMENT BASE

LIST OF MATERIAL

ITEM NO.	QTY	DESCRIPTION
1	2	SERVIT POST TWO #2-#2/0 WIRES SHORT STUD BURNDY TYPE K2C-26

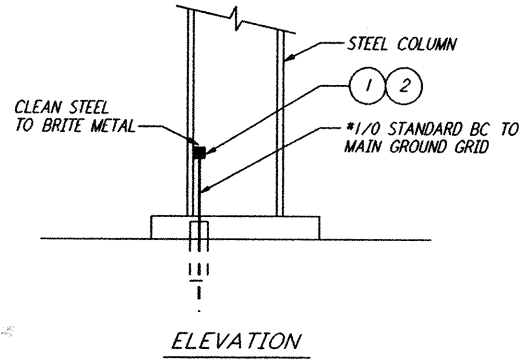
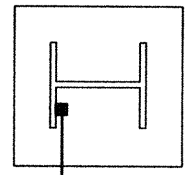
TRANSFORMER/EQUIP. GROUNDING (1) REF. N.T.S.



LIST OF MATERIAL

ITEM NO.	QTY	DESCRIPTION
1	1	BROOKS #9 CONCRETE COVER WT-11 LBS WITH 9 GAGE RE-BAR
2	1	CONNECTOR 3 WIRES X 3/4" *GROUND ROD BURNDY #K6426
3	1	BROOKS #9 BODY (9" DIA X 24" LONG) WT-49 LBS
4	1	GROUND ROD COPPER-CLAD STEEL 5/8" DIA X 10'-0" COPPER WELD

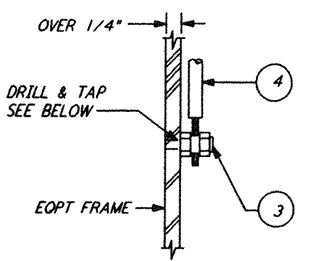
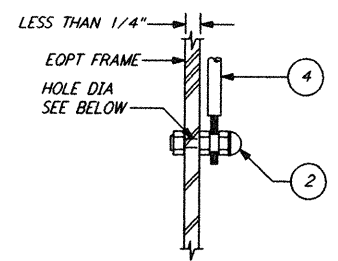
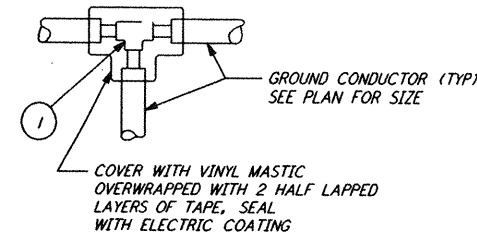
GROUND WELL (2) REF. N.T.S. E-507 E-517



LIST OF MATERIAL

ITEM NO.	QTY	DESCRIPTION
1	1	CADWELD MOLD #HDVBC-2C
2	1	CARTRIDGE STANDARD POWDER 200 GRAMS

EXOTHERMIC WELD TO STRUCTURE (3) REF. N.T.S. E-507 E-517



WIRE TO WIRE

TYPE	WIRE RUN	TAP
A	#4/0	#4/0
B	#4/0	#2/0
C	#4/0	#2
D	#2	#2
E	#2	#4
F	#2/0	#2/0
G	#2/0	#2
H	#1/0	#1/0

BOLTED CONNECTION

TYPE	WIRE SIZE	HOLE DIA.
A	#8-#2/0	7/16"

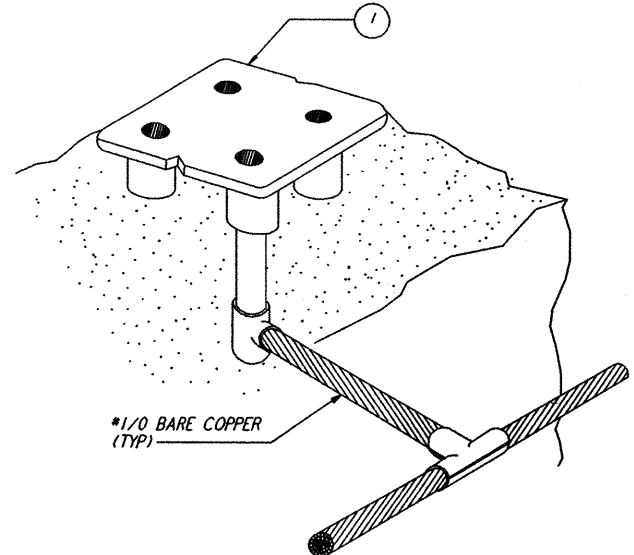
TAPPED CONNECTION

TYPE	WIRE SIZE	TAPPED HOLE
A	#8-#2	3/8"-16
B	#2-#2/0	1/2"-13

LIST OF MATERIAL

ITEM NO.	QTY	DESCRIPTION
1	1	THERMAL WELD, GROUND, SIZE AS REQUIRED
2	1	GROUND CONNECTOR, CABLE TO BAR, SIZE AS REQUIRED
3	1	GROUND POST, SIZE AS REQUIRED
4	AR	TYPE "TW" INSULATED GREEN GROUND WIRE (UNLESS OTHERWISE NOTED)

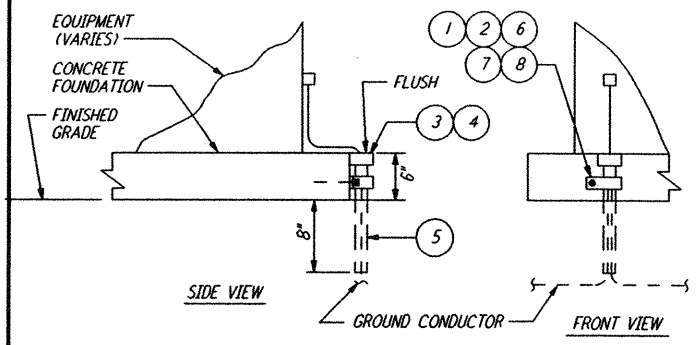
GROUNDING CONNECTIONS (4) REF. N.T.S. E-507 E-517



LIST OF MATERIAL

ITEM NO.	QTY	DESCRIPTION
1	1	GROUND PLATE, FLUSH, CADWELD #B16420

FLUSH FLOOR GROUND PLATE (5) REF. N.T.S. E-507 E-517



LIST OF MATERIAL

ITEM NO.	QTY	DESCRIPTION
1	1	CLAMP, GALV STEEL 1 1/4" DIA CONDUIT
2	1	BOLT, 1/4"-20 x 1" LG HEX HD SST
3	1	END BELL, FOR 1 1/4" DIA PVC CONDUIT
4	AR	CEMENT FOR PVC CONDUIT AND FITTINGS
5	1	IFIT CONDUIT PVC 1 1/4" DIA SCH 40
6	1	ANCHOR, MASONRY 1/4"-20
7	1	CLAMP BACK, 1 1/4, GALV STEEL
8	1	WASHER, 1/4" *FLAT SST

GROUNDING CABLE PROTECTIVE SLEEVE (6) REF. N.T.S. E-507 E-517

NO.	DATE	BY	CHKD	ENGR	PROJ	DESCRIPTION
B	9-10-96	MM	JCL	JCL	TDM	BID ADDENDUM #2
A	6-14-96	MM	JCL	KR	TDM	FINAL DESIGN REVIEW

**PARSONS**  
 100 WEST WALNUT STREET  
 PASADENA, CALIFORNIA

**LIGO**  
 CALIFORNIA INSTITUTE OF TECHNOLOGY  
 MASSACHUSETTS INSTITUTE OF TECHNOLOGY

LASER INTERFEROMETER  
 GRAVITATIONAL-WAVE OBSERVATORY  
 BEAM TUBE ENCLOSURE - LIVINGSTON, LA

ELECTRICAL  
 GROUNDING DETAILS

AS NOTED PP150969 8094  
**LA-E-505**

This document and the design it covers are the property of PARSONS. They are loaned only with the borrower's expressed written agreement that they will not be reproduced, copied, loaned, exhibited, or used in any other way, except by written consent from PARSONS to the borrower.

Wed Sep 11 07:05:35 1996 s3-118b2 J:\PLOTS\QUEUES\118B2\EE505.PRF