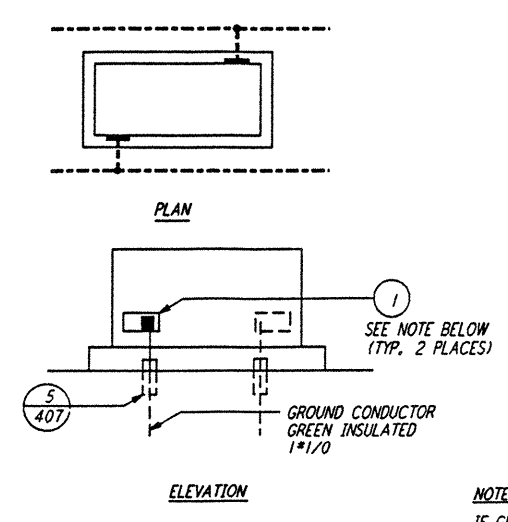


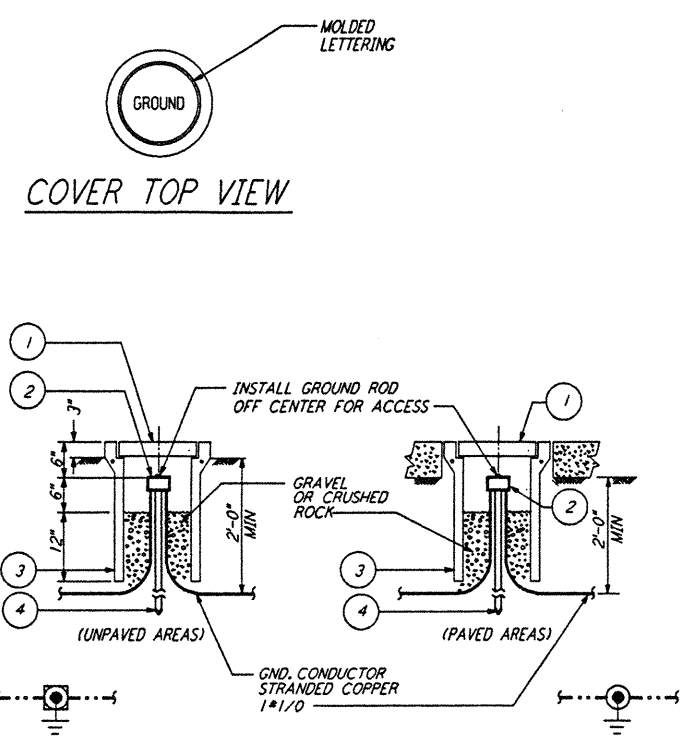
This document and the design it covers are the property of PARSONS. They are loaned only with the borrower's expressed written agreement that they will not be reproduced, copied, loaned, exhibited, or used in any other way, except by written consent from PARSONS to the borrower.



LIST OF MATERIAL

ITEM NO.	QTY	DESCRIPTION
1	2	SERVIT POST TWO #2-#2/0 WIRES SHORT STUD BURNDY TYPE K2C-26

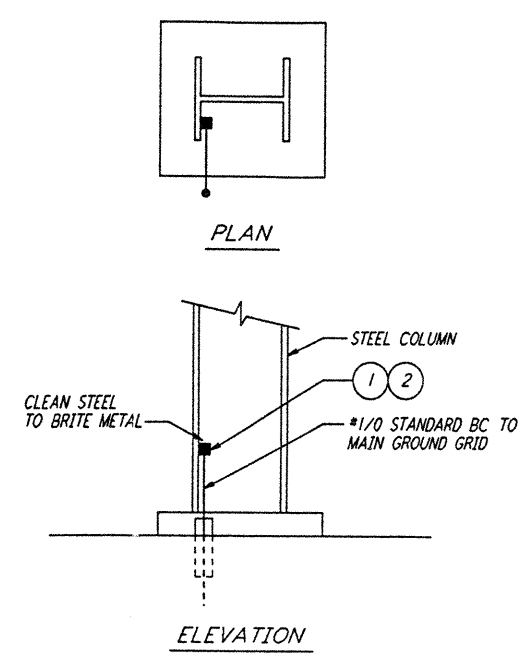
TRANSFORMER/EQUIP. GROUNDING (1) REF
 N.T.S.



LIST OF MATERIAL

ITEM NO.	QTY	DESCRIPTION
1	1	BROOKS #9 CONCRETE COVER WT=11 LBS WITH 9 GAGE RE-BAR
2	1	CONNECTOR 3 WIRES X 3/4 *GROUND ROD BURNDY #K6426
3	1	BROOKS #9 BODY 19" DIA X 24" LONG WT=49 LBS
4	1	GROUND ROD COPPER-CLAD STEEL 5/8" DIA X 10'-0" COPPER WELD

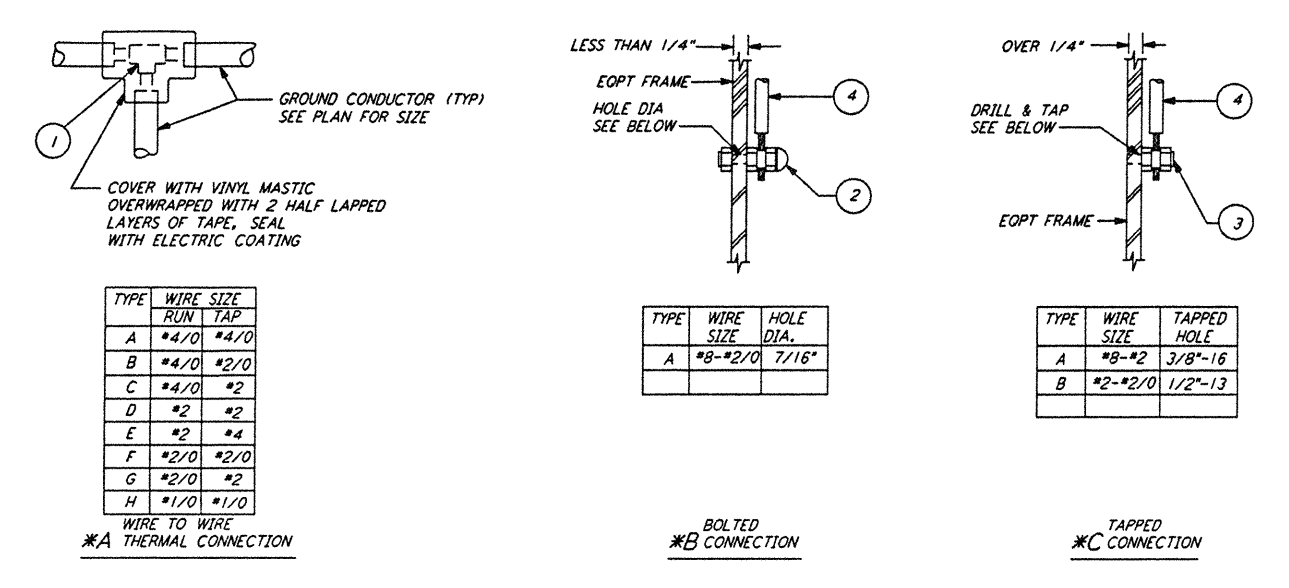
GROUND WELL (2) REF
 N.T.S.



LIST OF MATERIAL

ITEM NO.	QTY	DESCRIPTION
1	1	CADWELD MOLD #DVCB-2C
2	1	CARTRIDGE STANDARD POWDER 200 GRAMS

EXOTHERMIC WELD TO STRUCTURE (3) REF
 N.T.S.



WIRE TO WIRE THERMAL CONNECTION

TYPE	WIRE SIZE	RUN	TAP
A	#4/0	#4/0	#4/0
B	#4/0	#2/0	#2/0
C	#4/0	#2	#2
D	#2	#2	#2
E	#2	#4	#4
F	#2/0	#2/0	#2/0
G	#2/0	#2	#2
H	#1/0	#1/0	#1/0

BOLTED CONNECTION

TYPE	WIRE SIZE	HOLE DIA.
A	#8-#2/0	7/16"

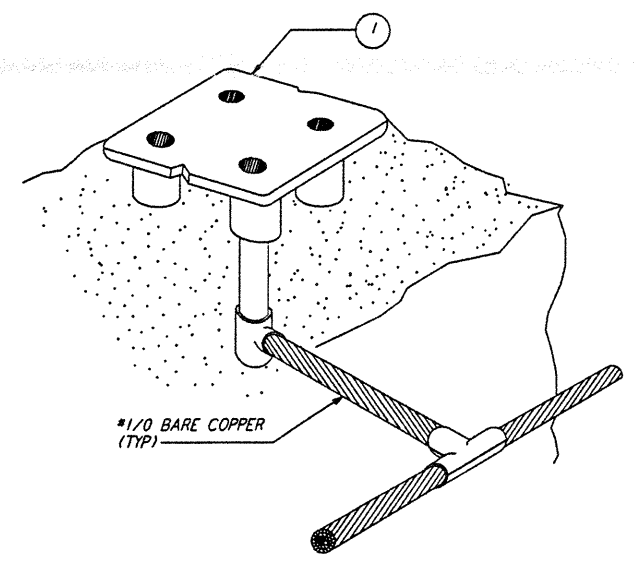
TAPPED CONNECTION

TYPE	WIRE SIZE	TAPPED HOLE
A	#8-#2	3/8"-16
B	#2-#2/0	1/2"-13

LIST OF MATERIAL

ITEM NO.	QTY	DESCRIPTION
1	1	THERMAL WELD, GROUND, SIZE AS REQUIRED
2	1	GROUND CONNECTOR, CABLE TO BAR, SIZE AS REQUIRED
3	1	GROUND POST, SIZE AS REQUIRED
4	AR	TYPE "TW" INSULATED GREEN GROUND WIRE (UNLESS OTHERWISE NOTED)

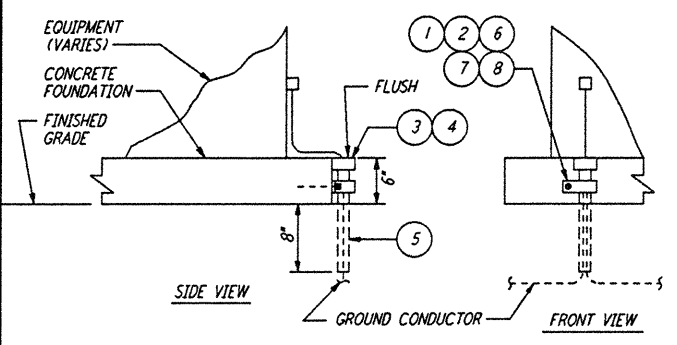
GROUNDING CONNECTIONS (4) REF
 N.T.S.



LIST OF MATERIAL

ITEM NO.	QTY	DESCRIPTION
1	1	GROUND PLATE, FLUSH, CADWELD #B16420

FLUSH FLOOR GROUND PLATE (5) REF
 N.T.S.



LIST OF MATERIAL

ITEM NO.	QTY	DESCRIPTION
1	1	CLAMP, GALV STEEL 1/4" DIA CONDUIT
2	1	BOLT, 1/4"-20 X 1" LG. HEX HD SST
3	1	END BELL, FOR 1/4" DIA PVC CONDUIT
4	AR	CEMENT FOR PVC CONDUIT AND FITTINGS
5	1 FT	CONDUIT, PVC 1/4" DIA SCH 40
6	1	ANCHOR, MASONRY 1/4"-20
7	1	CLAMP BACK, 1/4", GALV STEEL
8	1	WASHER, 1/4" *FLAT SST

GROUNDING CABLE PROTECTIVE SLEEVE (6) REF
 N.T.S.

NO.	DATE	BY	CHKD	ENGR	PROJ	DESCRIPTION

ISSUED FOR CONSTRUCTION
 DRAWN M.M. 11-15-96
 CHECKED JcL 7-24-96
 ENGINEER JcL 10-25-96
 PROJ ESD 11/25/96



LASER INTERFEROMETER GRAVITATIONAL-WAVE OBSERVATORY BEAM TUBE ENCLOSURE - LIVINGSTON, LA

ELECTRICAL GROUNDING DETAILS

AS NOTED PPI50969 8094

LA-E-505