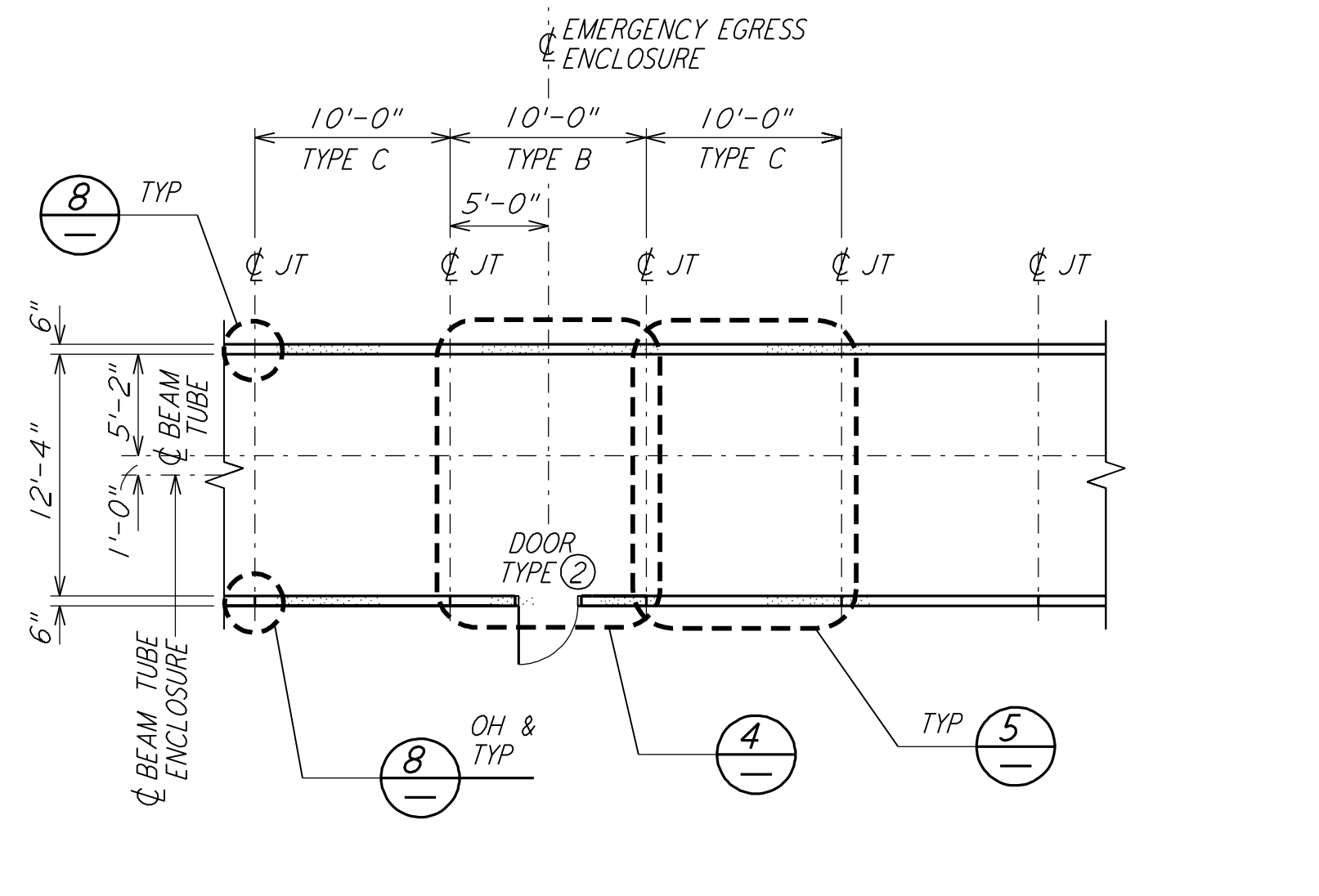
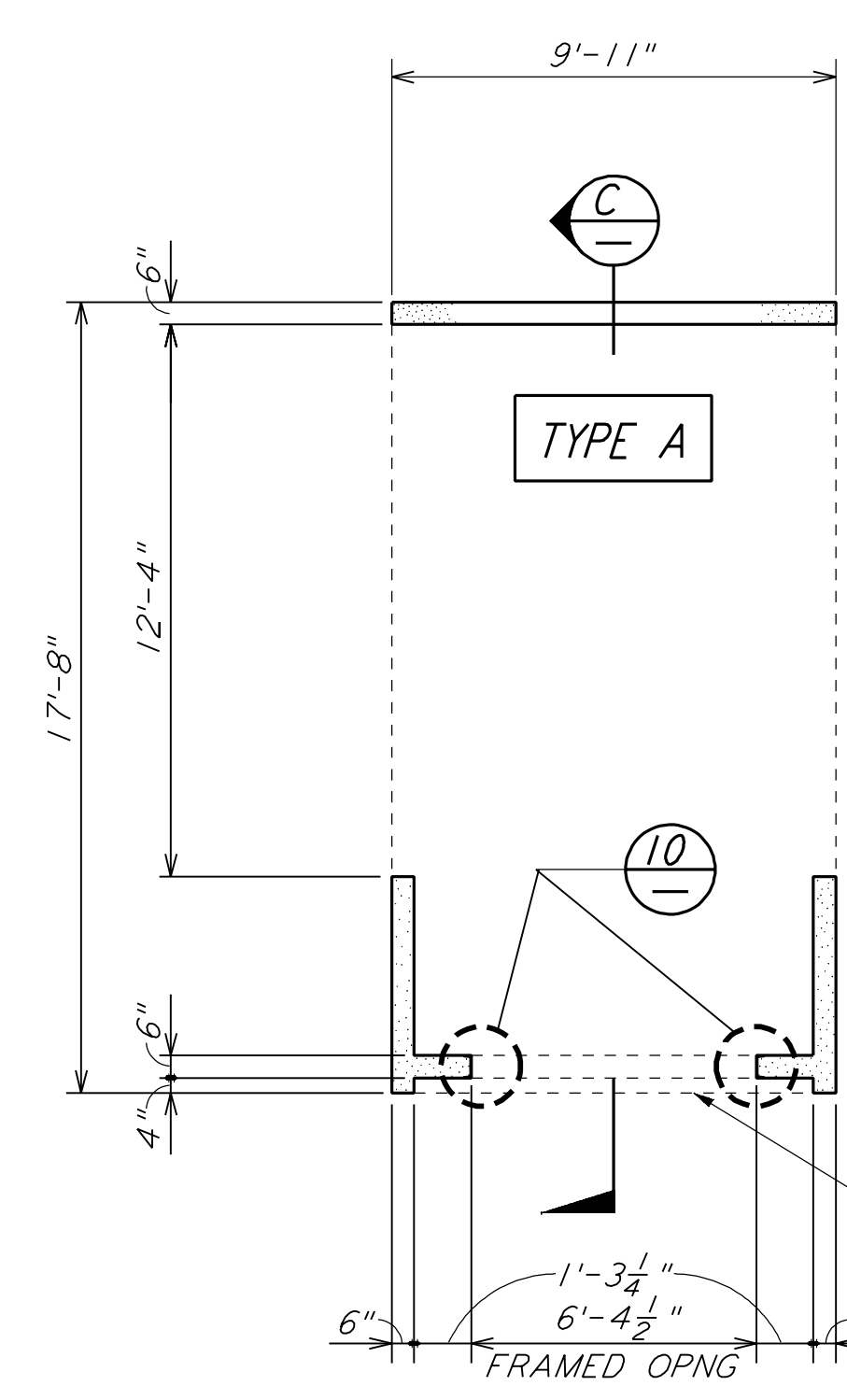


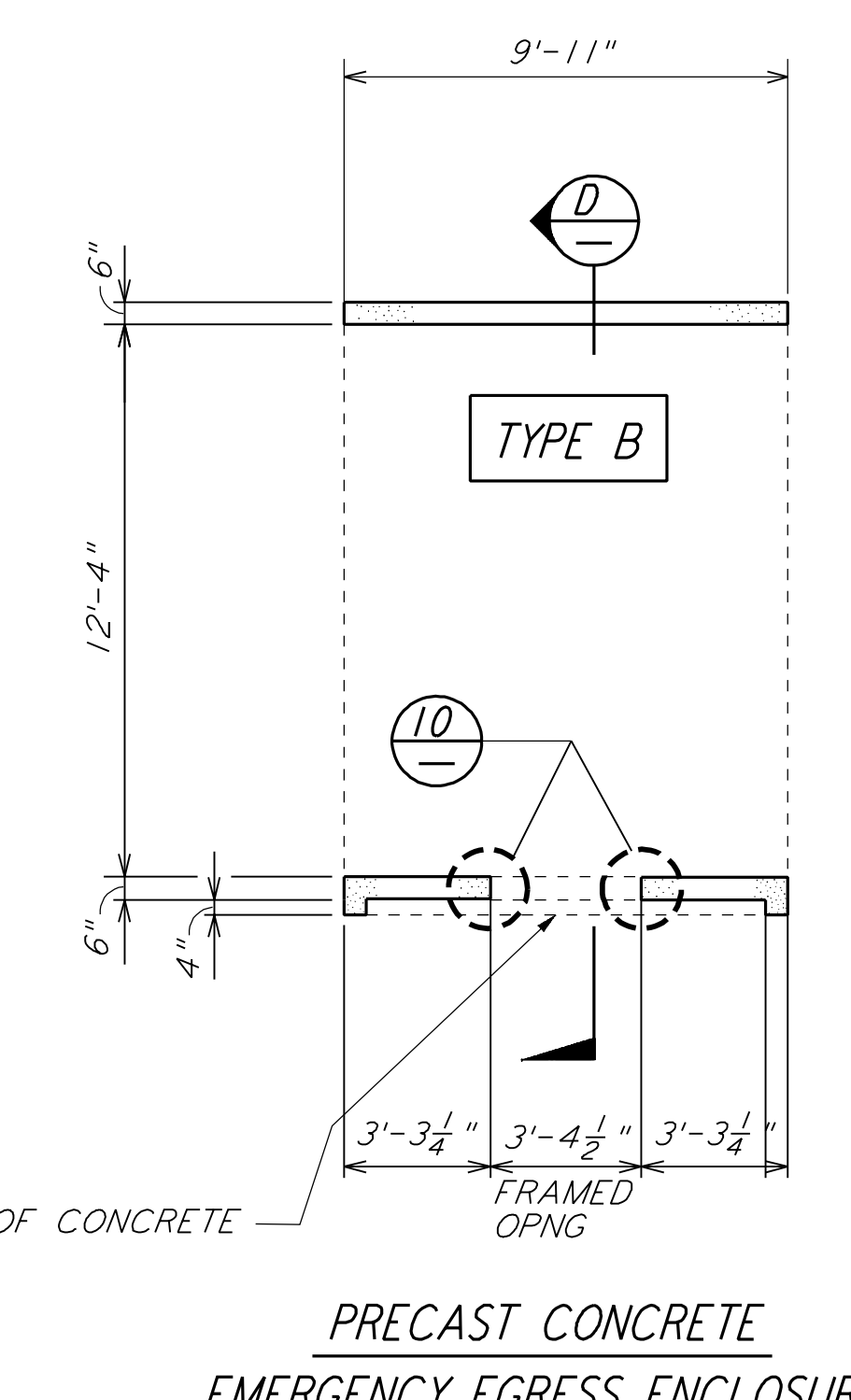
PLAN AT SERVICE ENTRANCE (1) REF
 $\frac{1}{8}'' = 1'-0''$ LA-S-503 LA-S-502



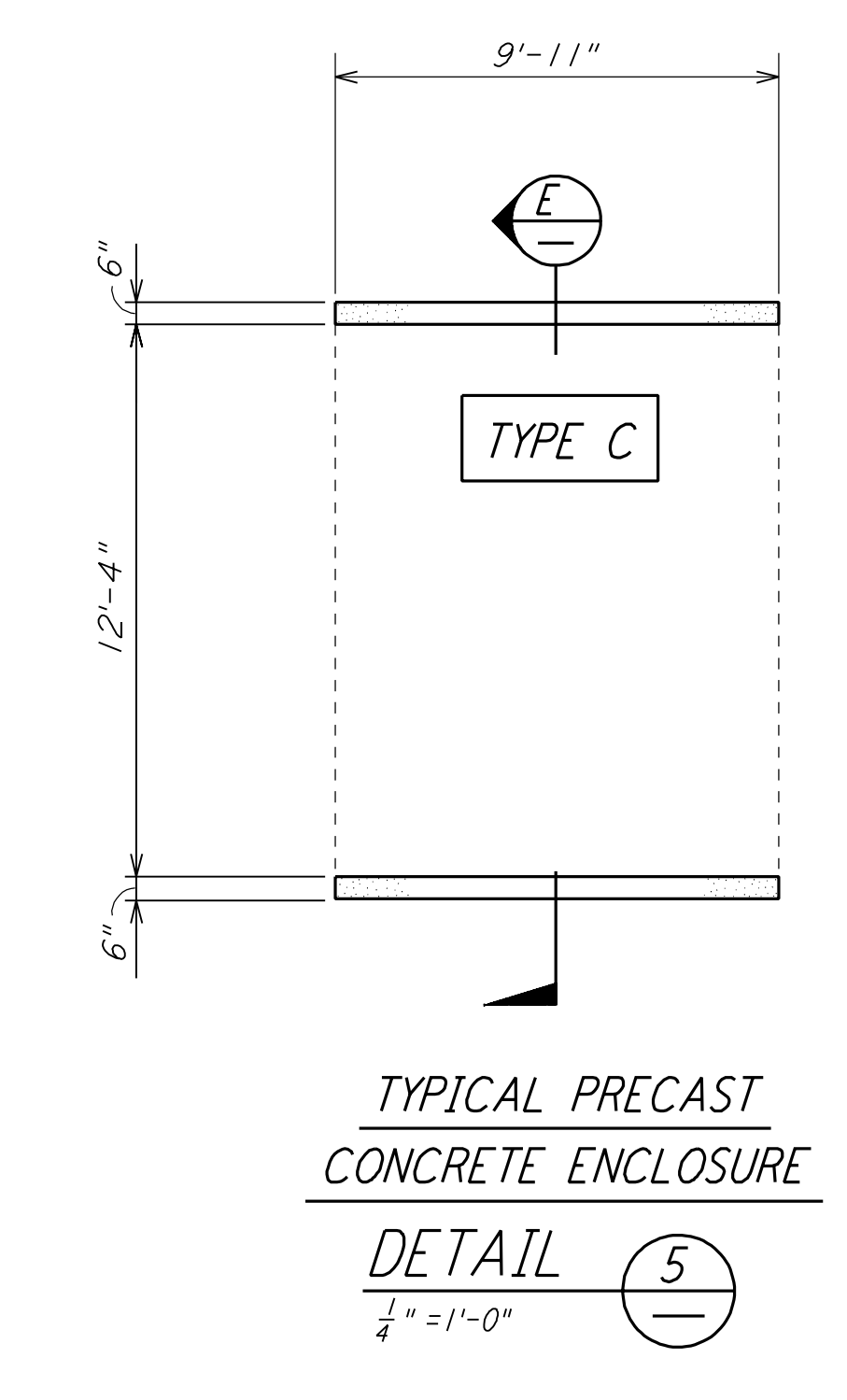
PLAN AT EMERGENCY EGRESS (2) REF
 $\frac{1}{8}'' = 1'-0''$ LA-S-503 LA-S-502



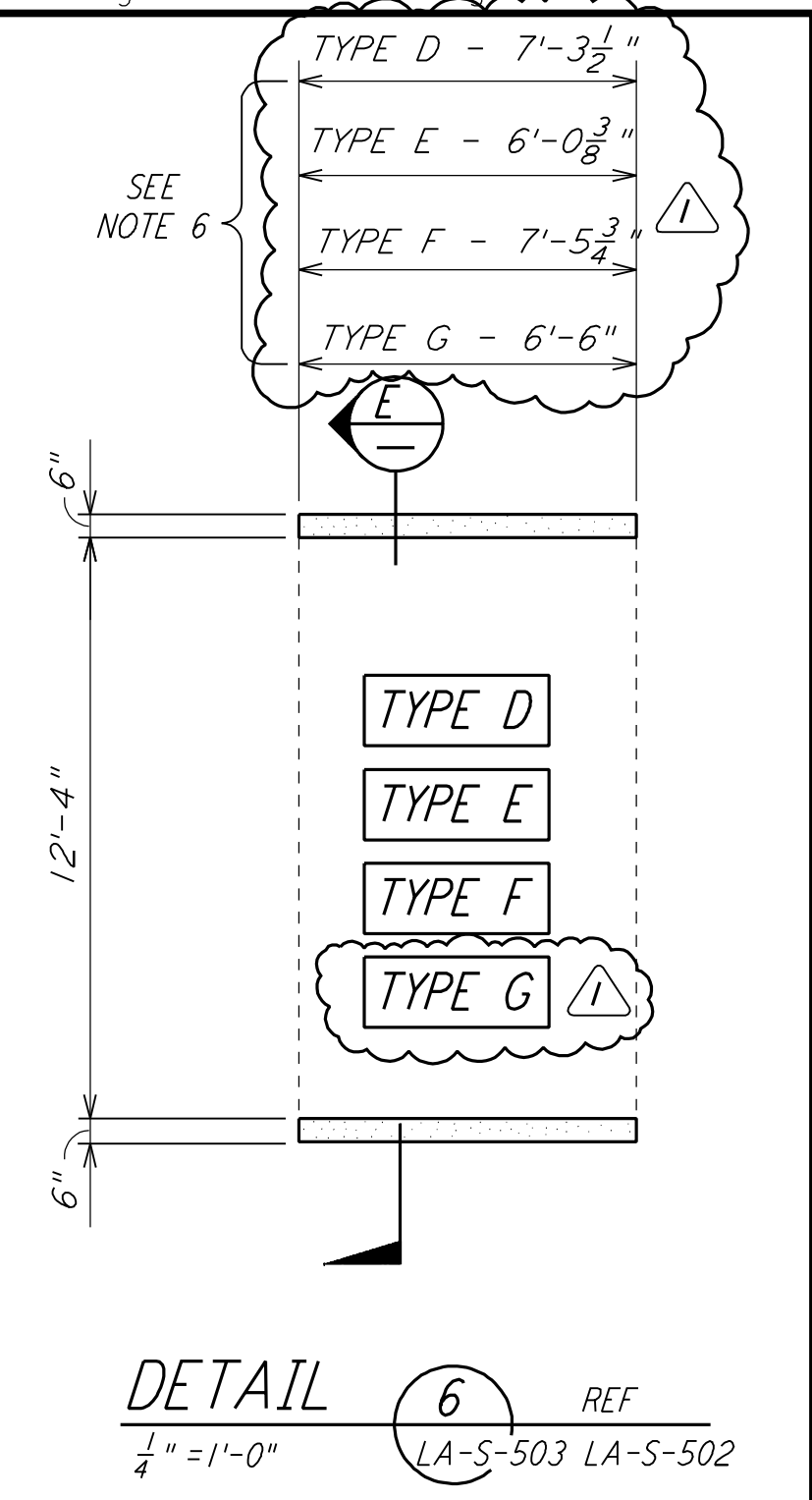
PRECAST CONCRETE SERVICE ENTRANCE ENCLOSURE DETAIL (3)
 $\frac{1}{4}'' = 1'-0''$



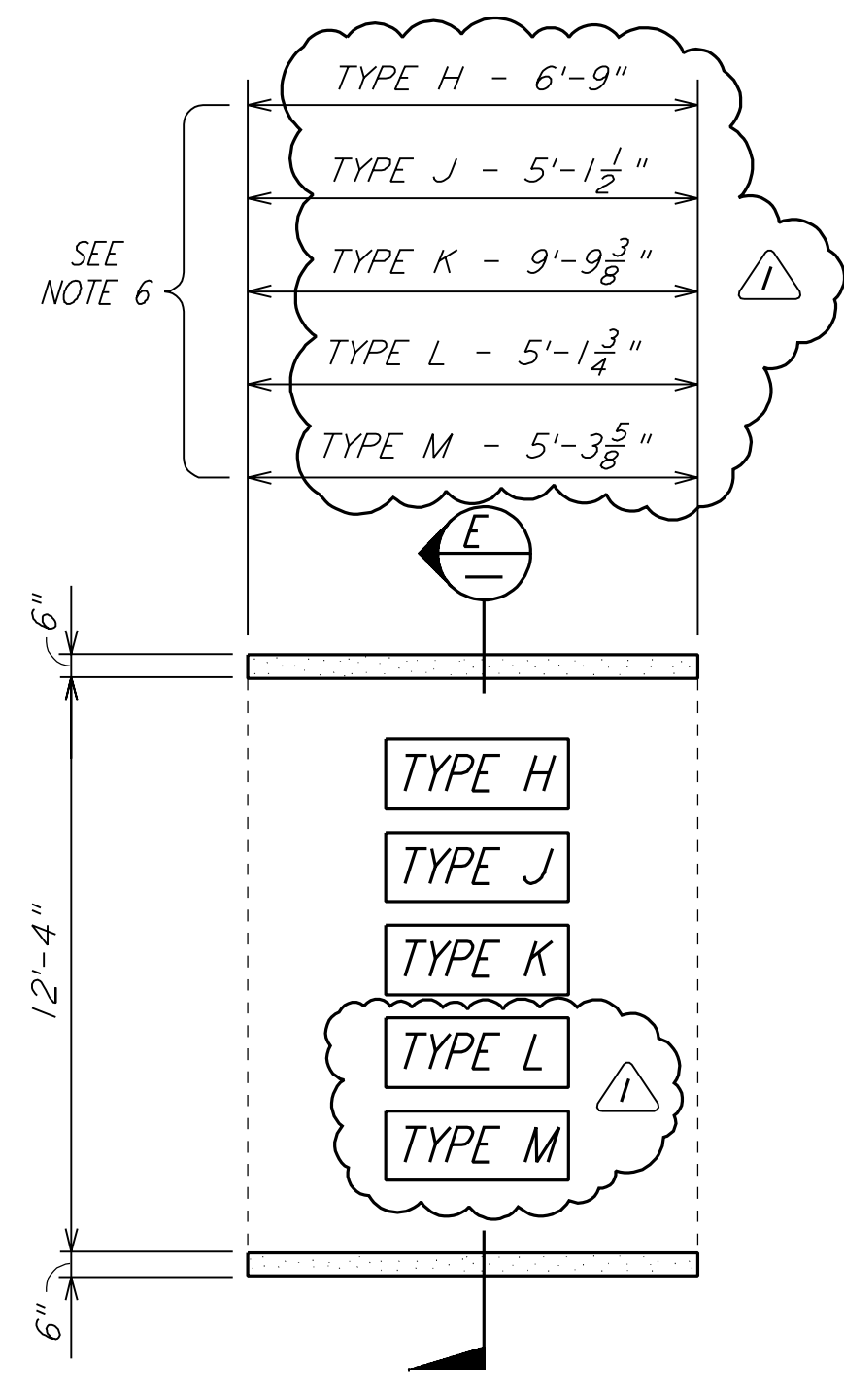
PRECAST CONCRETE EMERGENCY EGRESS ENCLOSURE DETAIL (4)
 $\frac{1}{4}'' = 1'-0''$



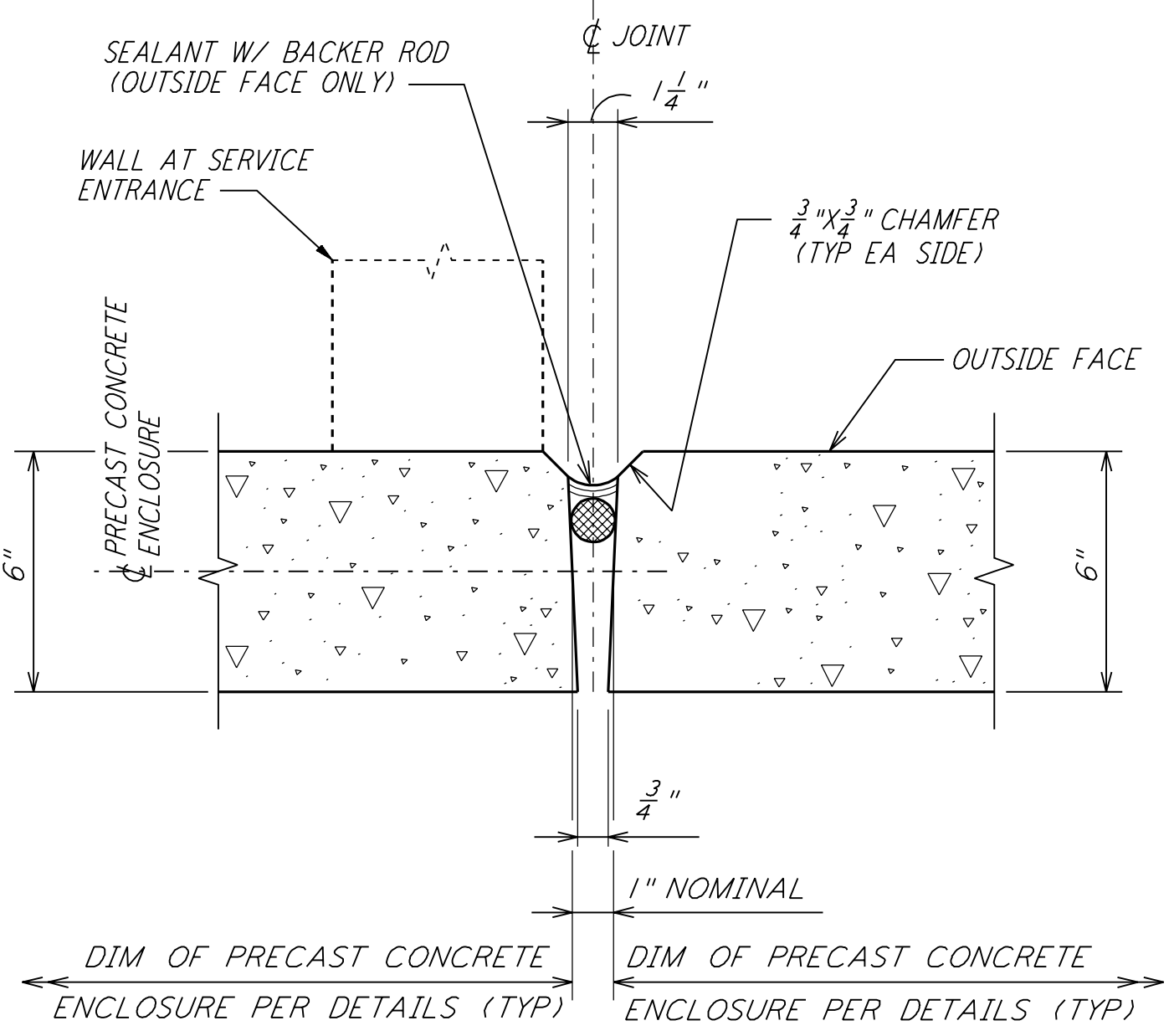
TYPICAL PRECAST CONCRETE ENCLOSURE DETAIL (5)
 $\frac{1}{4}'' = 1'-0''$



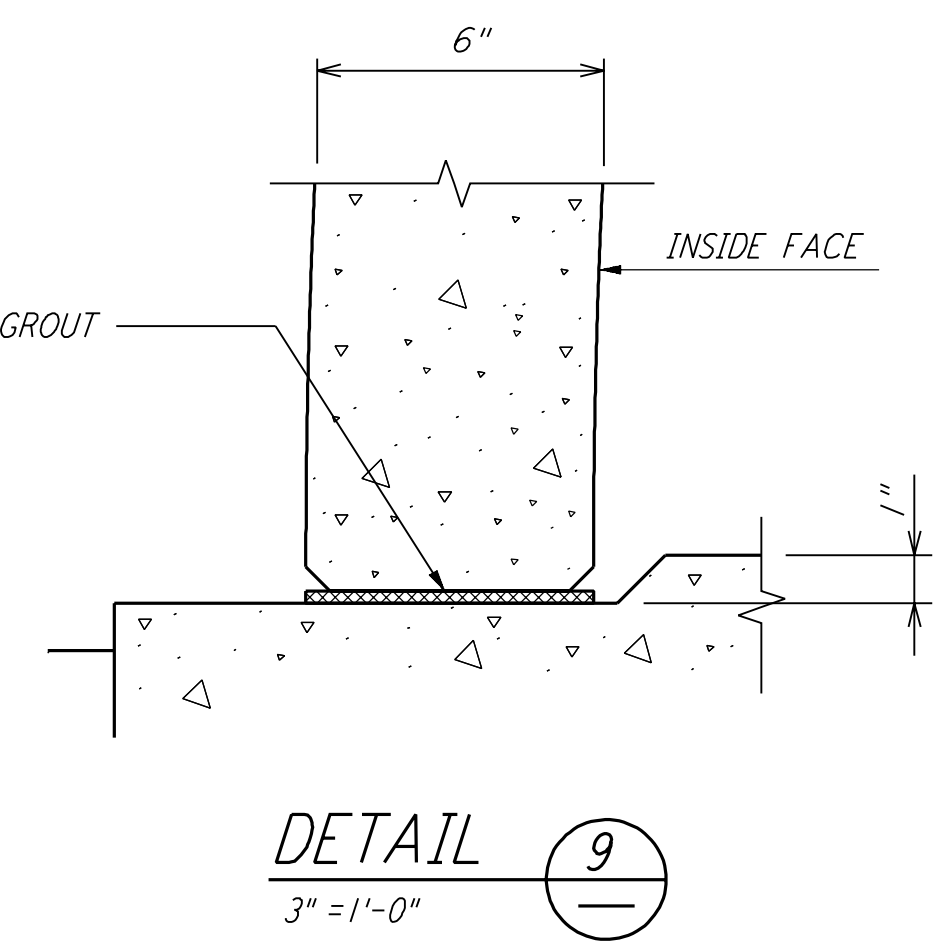
DETAIL (6) REF
 $\frac{1}{4}'' = 1'-0''$ LA-S-503 LA-S-502



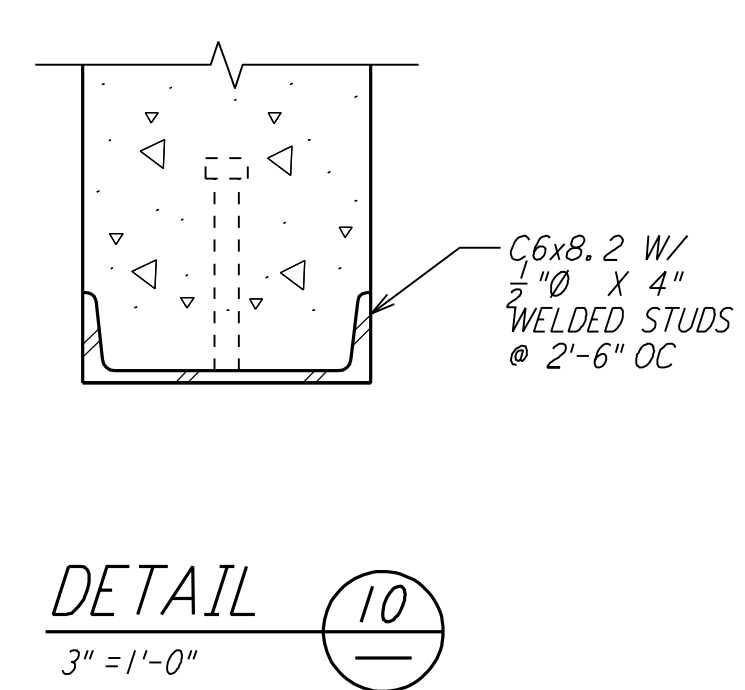
DETAIL (7) REF
 $\frac{1}{4}'' = 1'-0''$ LA-S-503 LA-S-502



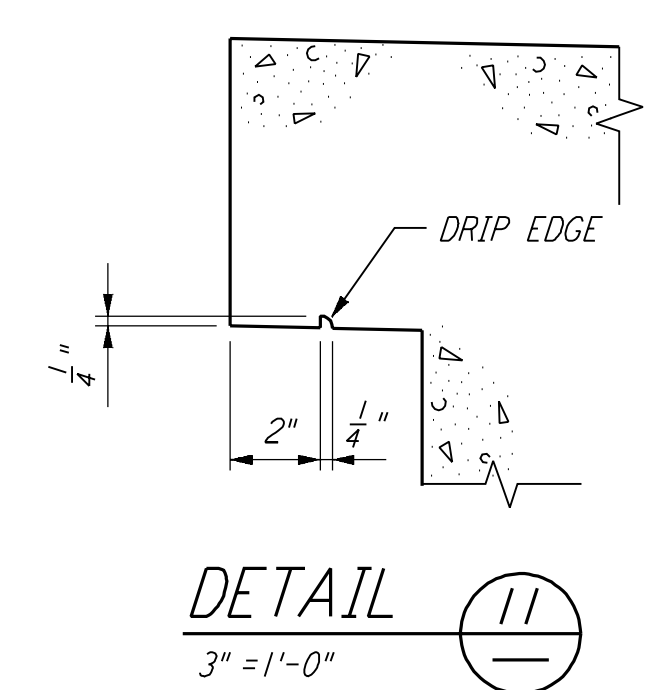
DETAIL (8)
 $\frac{3}{4}'' = 1'-0''$



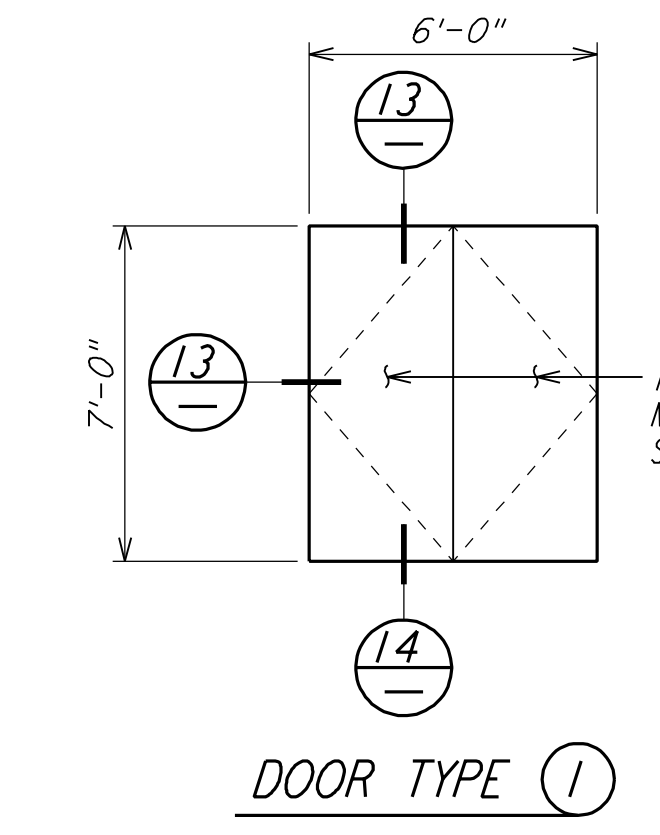
DETAIL (9)
 $\frac{3}{4}'' = 1'-0''$



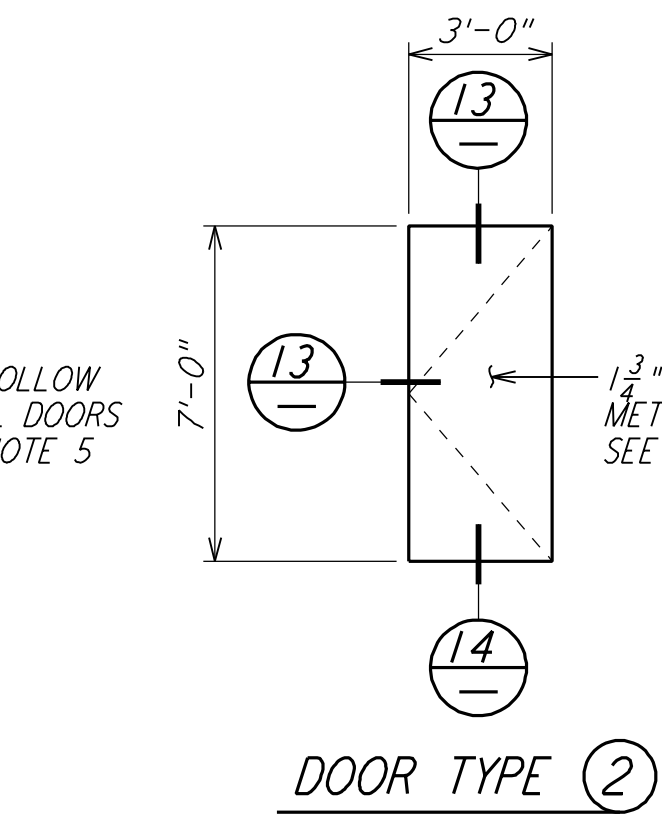
DETAIL (10)
 $\frac{3}{4}'' = 1'-0''$



DETAIL (11)
 $\frac{3}{4}'' = 1'-0''$

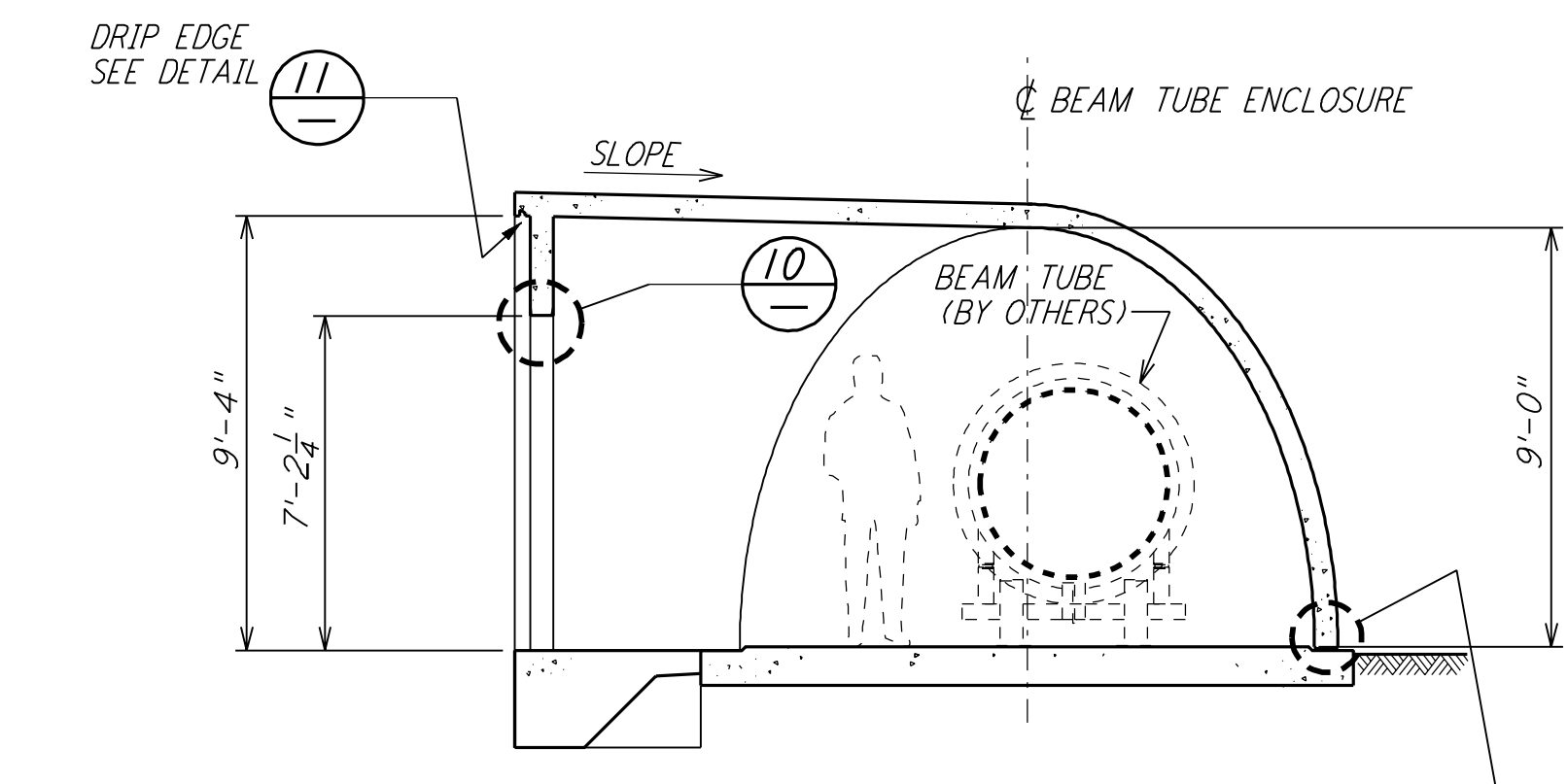


DOOR TYPE (1)

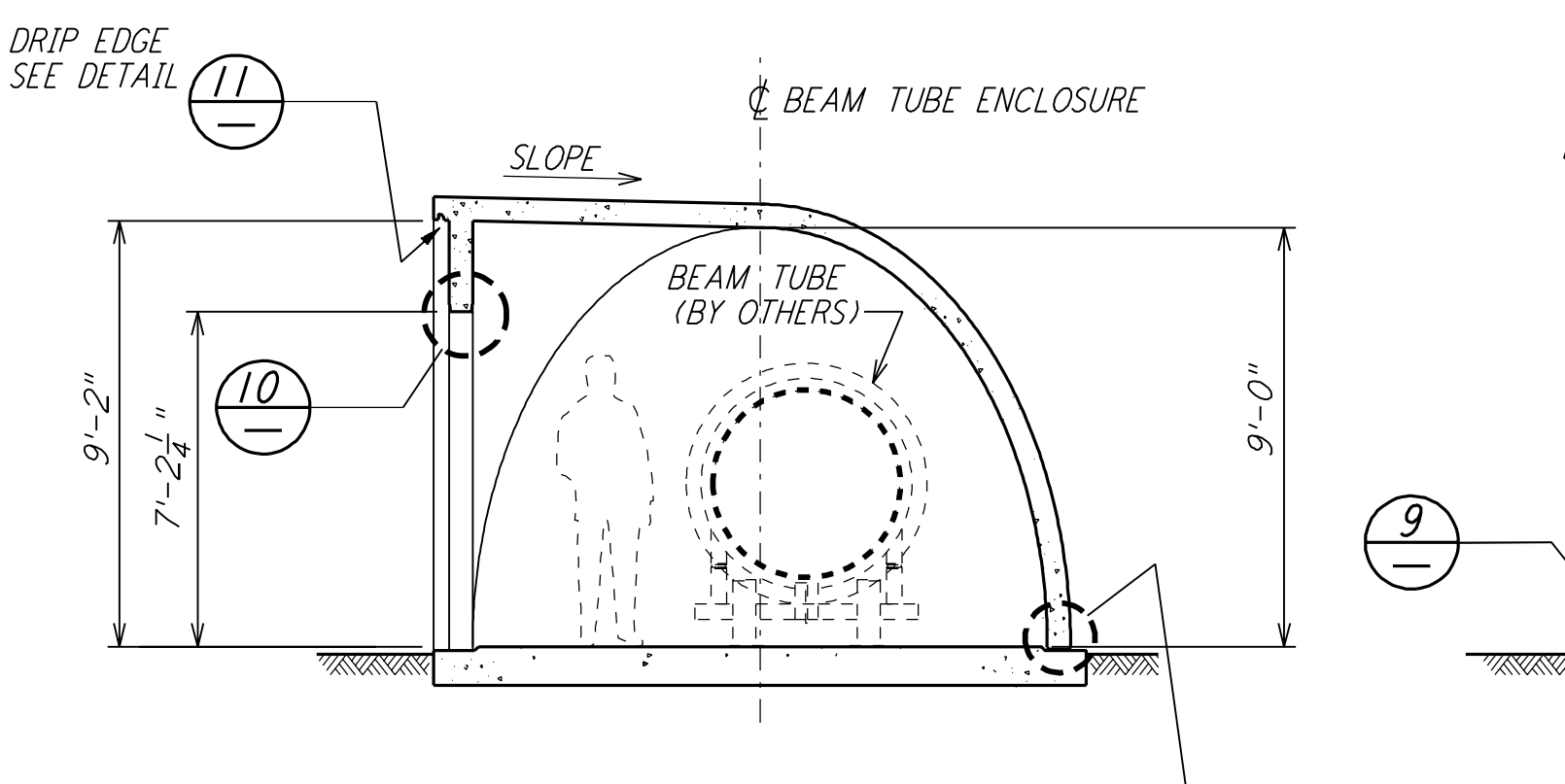


DOOR TYPE (2)

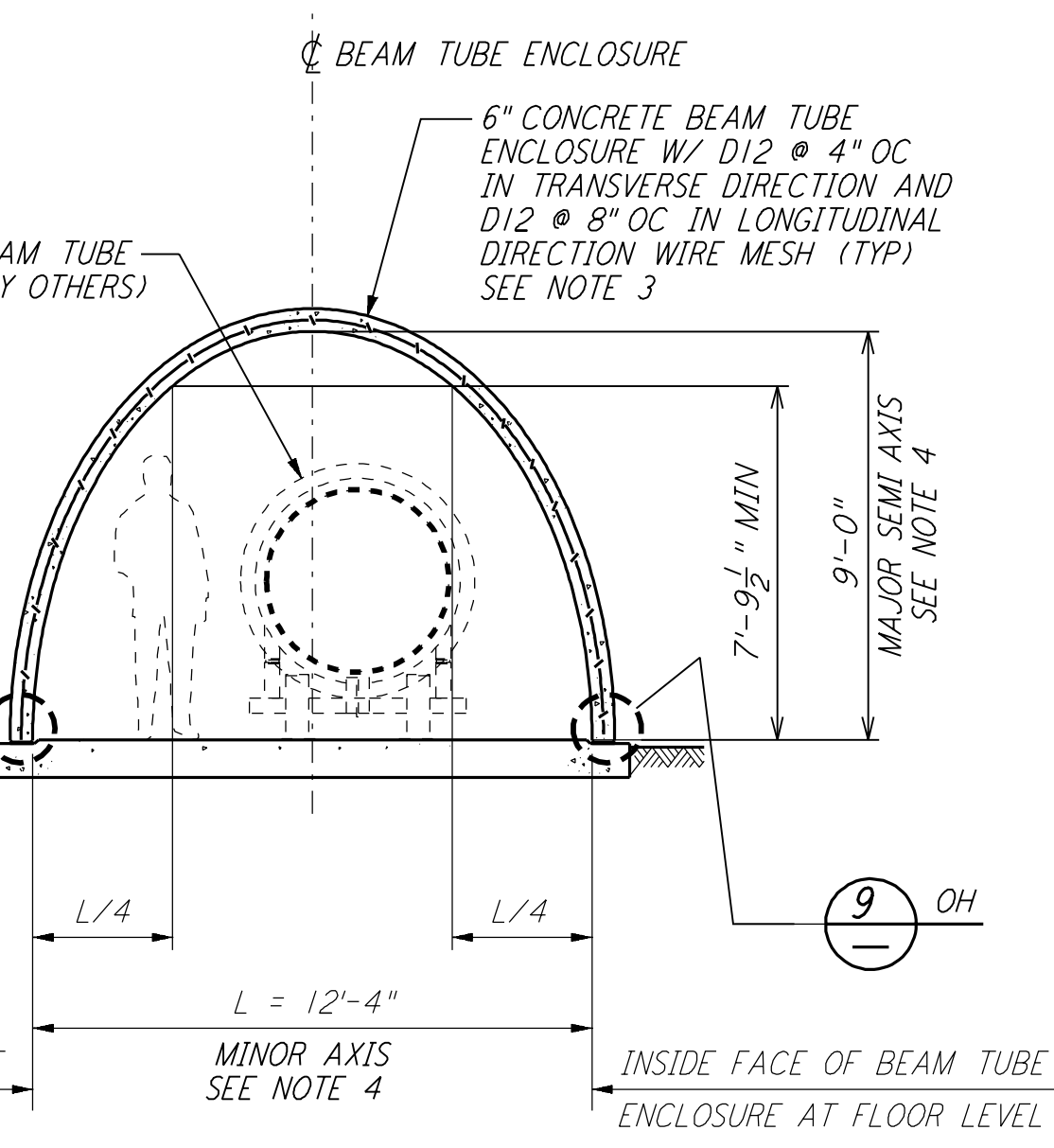
DOOR TYPES (12)
 NTS



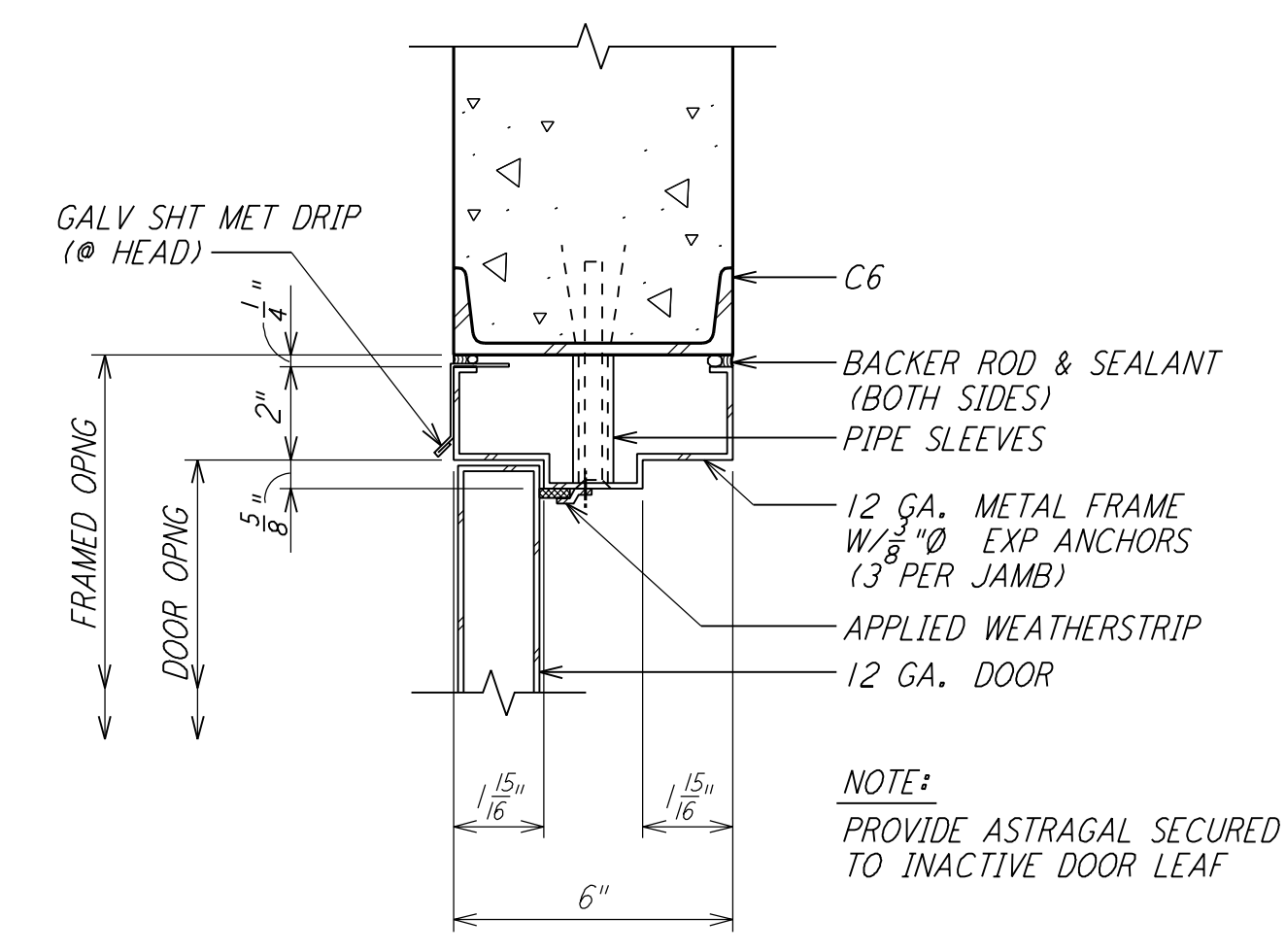
SECTION (C)
 $\frac{1}{4}'' = 1'-0''$



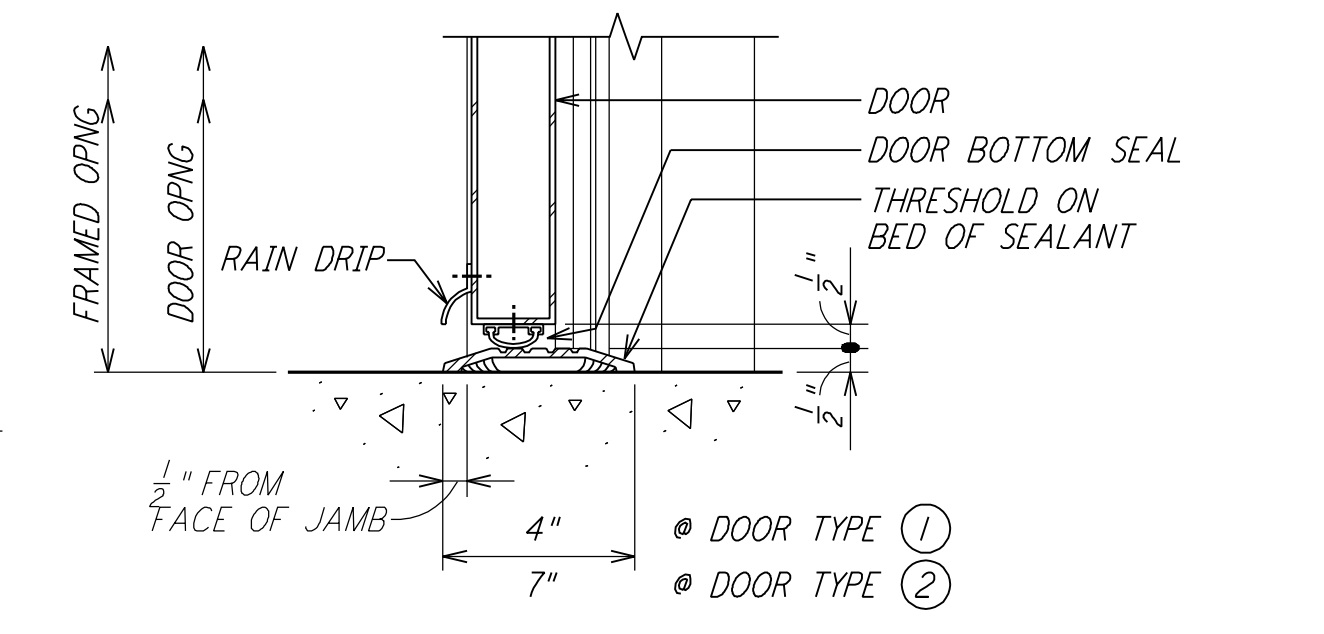
SECTION (D)
 $\frac{1}{4}'' = 1'-0''$



SECTION (E)
 $\frac{1}{4}'' = 1'-0''$

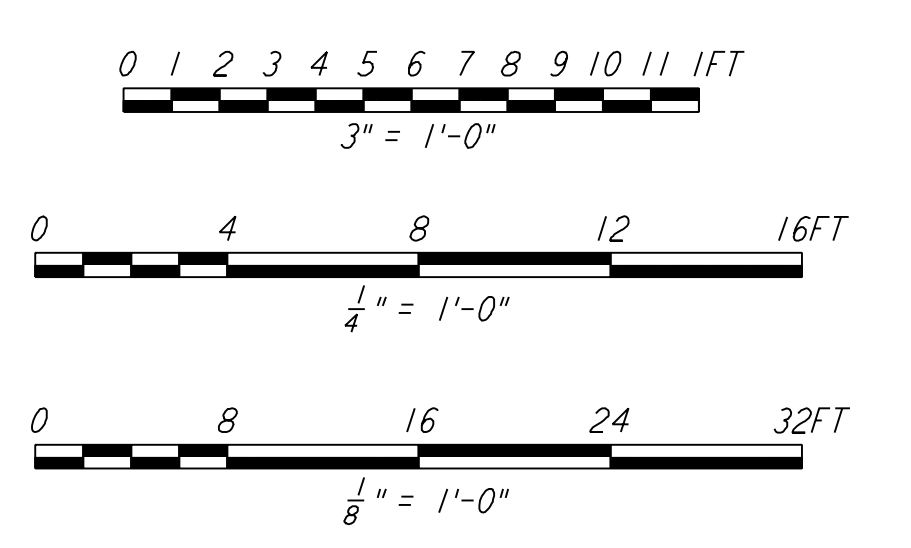


JAMB (HEAD SIM) DETAIL (13)
 $\frac{3}{4}'' = 1'-0''$



SILL DETAIL (14)
 $\frac{3}{4}'' = 1'-0''$

- NOTES:**
- FOR GENERAL NOTES, ABBREVIATIONS AND LEGEND SEE DRAWING LA-S-501.
 - SPACERS SHALL BE ELIMINATED WHEN EXPANSION JOINT BETWEEN PRECAST SEGMENTS IS WITHIN 3 FEET FROM THE EXPANSION JOINT IN THE FOUNDATION SLAB.
 - REINFORCEMENT FOR ALL ELEMENTS OF PRECAST CONCRETE ENCLOSURES SHALL BE DESIGNED BY THE CONTRACTOR AND SHALL BE APPROVED BY THE CONSTRUCTION MANAGER. REINFORCEMENT SHOWN IS FOR BID PURPOSE ONLY.
 - DIMENSIONS ARE FOR A SEMI-ELLIPTICAL CROSS SECTION. CONTRACTOR MAY SLIGHTLY DEVIATE FROM THIS SHAPE PROVIDED ALL SHOWN DIMENSIONS AND CLEARANCES ARE SATISFIED.
 - ALL DOORS, DOOR HARDWARES AND INSTALLATION OF DOORS TO BEAM TUBE ENCLOSURE ARE INCLUDED IN THIS CONTRACT.



LIGO-D961238-01-0

NO.	DATE	BY	CHKD	ENGR	PROJ	DESCRIPTION
1	2-28-97	GP				REV DET 6 & 7; DELETED NOTE 6

ISSUED FOR CONSTRUCTION		
DRAWN	MCS	11-15-96
CHECKED	DDM	11-15-96
ENGINEER	BP	11-15-96
PROJ	TDM	11-15-96

PARSONS
 100 WEST WALNUT STREET
 PASADENA, CALIFORNIA

LIGO
 CALIFORNIA INSTITUTE OF TECHNOLOGY
 MASSACHUSETTS INSTITUTE OF TECHNOLOGY

LASER INTERFEROMETER
 GRAVITATIONAL-WAVE OBSERVATORY
 BEAM TUBE ENCLOSURE - LIVINGSTON, LA

SCALE: AS NOTED
 CONTRACT NUMBER: PP150969
 PROJECT NUMBER: 8094

SHEET NUMBER: **LA-S-503**