

- NOTES:**
- SEE SPEC. V049-2-021 FOR INSTALLATION/ COMMISSIONING INFORMATION.
 - FOR TUBING/ PIPE SUPPORT REQUIREMENTS, SEE SPEC. V049-2-021, SECTION 10.

PROPRIETARY AND CONFIDENTIAL
 THIS DOCUMENT CONTAINS PROPRIETARY INFORMATION BELONGING TO PROCESS SYSTEMS INTERNATIONAL, INC. OR ITS AFFILIATED COMPANIES AND SHALL BE USED ONLY FOR THE PURPOSE FOR WHICH IT WAS SUPPLIED. IT SHALL NOT BE COPIED, REPRODUCED OR OTHERWISE USED, NOR SHALL SUCH INFORMATION BE FURNISHED IN WHOLE OR IN PART TO OTHERS EXCEPT IN ACCORDANCE WITH THE TERMS OF ANY AGREEMENT UNDER WHICH IT WAS SUPPLIED OR WITH THE PRIOR WRITTEN CONSENT OF PROCESS SYSTEMS INTERNATIONAL, INC. AND SHALL BE RETURNED UPON REQUEST.

DWG. NO.	DESCRIPTION	DWG. NO.	DESCRIPTION
V049-0-010	P & ID LEFT END STATION	V049-0-006	P & ID SKK CRYOPUMP
V049-0-007	EQUIPMENT ARRANGEMENT LEFT END STATION	1101102	LIGO VACUUM EQUIPMENT END STATION

UNLESS OTHERWISE SPECIFIED
 DIMENSIONS ARE IN INCHES
 TOLERANCES:
 FRACTIONAL & DECIMALS: AS SHOWN
 TWO PLACE DECIMAL: ±0.01
 THREE PLACE DECIMAL: ±0.005
 FINISHED SURFACE: RING BREAK CORNERS BY REMOVE ALL BURRS

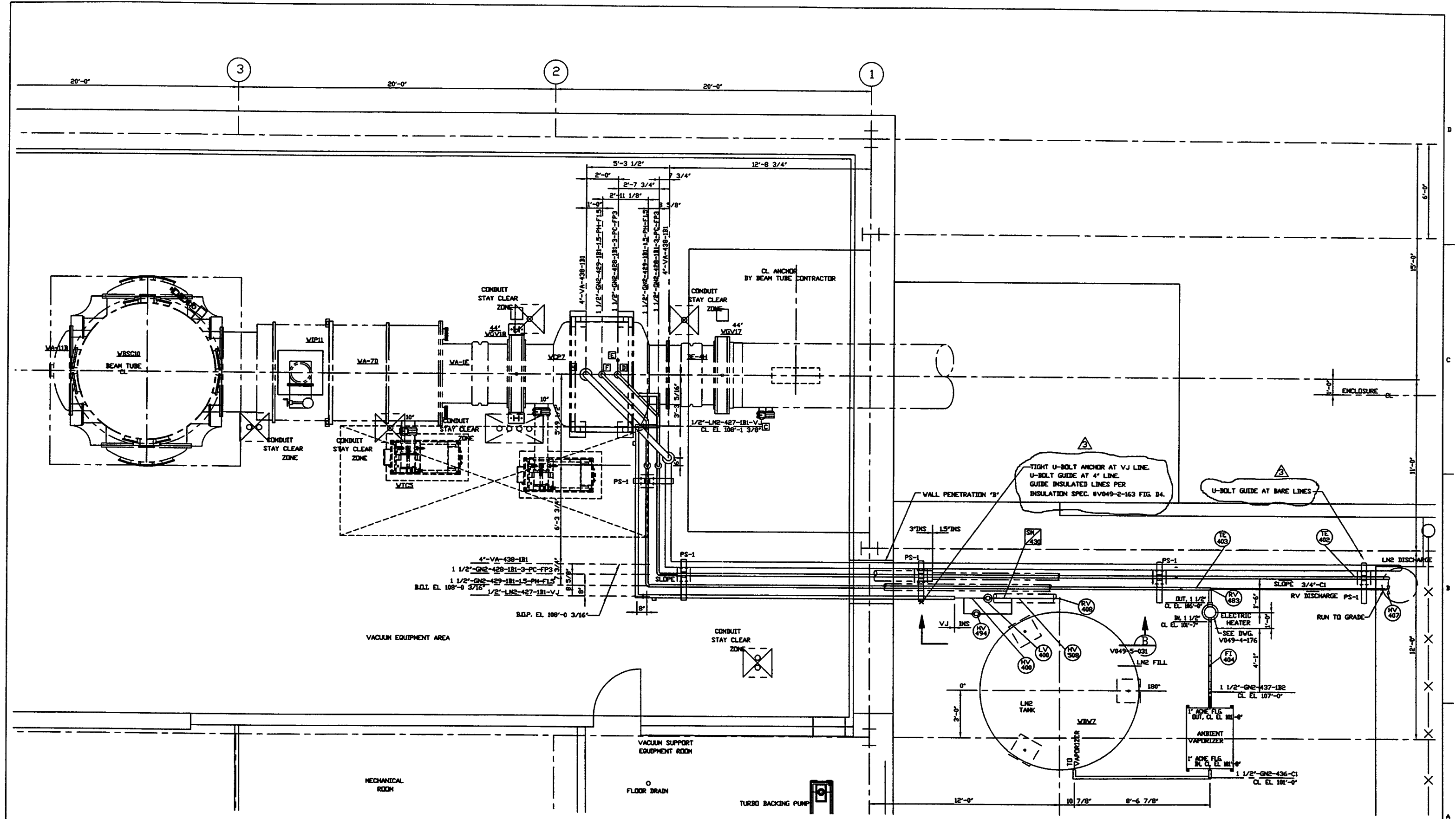
DO NOT SCALE THIS DRAWING
 USED ON: _____
 NEXT ASS'Y: _____

REV	DESCRIPTION	CHKD	DRWN	DATE	DESN
3	REISSUED FOR CONSTRUCTION AS NOTED				
2	ISSUED FOR CONSTRUCTION				
1	ISSUED FOR FOR UPDATE & BID				
0	ISSUED FOR FOR				
P1	PRELIMINARY DESIGN				

PROCESS SYSTEMS INTERNATIONAL, INC.
 20 WALDEN DR. WESTBOROUGH, MASSACHUSETTS 01581 USA

PIPING ARRANGEMENT PLAN
LEFT END STATION
WASHINGTON SITE
LIGO VACUUM EQUIPMENT

CHG FILE: V049030/3030S1
 SCALE: 3/8"=1'-0"
 SHEET: 1 OF 2



PLAN @ EL. 112'-6"

PROCESS SYSTEMS INTERNATIONAL INC. 20 WALLUP DR. WESTBOROUGH, MASSACHUSETTS 01581 USA			
PIPING ARRANGEMENT, PLAN LEFT END STATION WASHINGTON SITE LIGO VACUUM EQUIPMENT			
CAD FILE	DATE	DWG. NO.	REV.
V0495030/5030S2	D	V049-5-030	3
SCALE 3/8"-1'-0"	SHEET 2 OF 2		

FEB 22, 1997 - 1107607