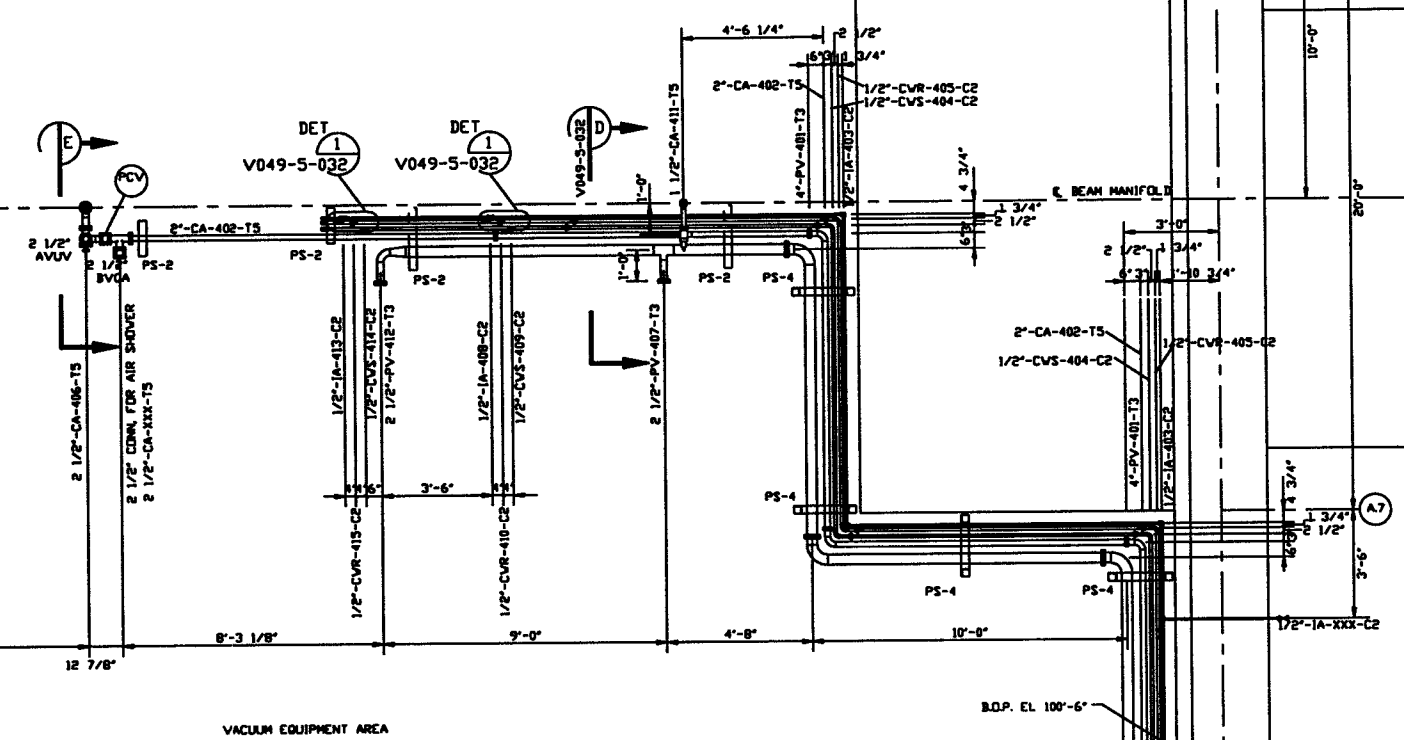
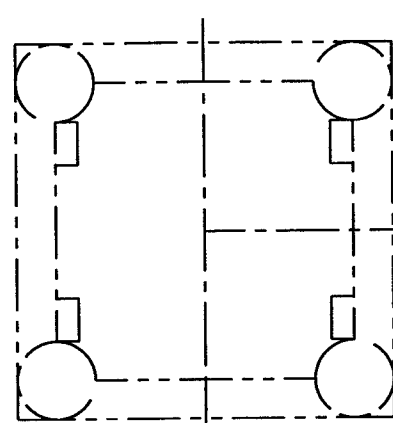
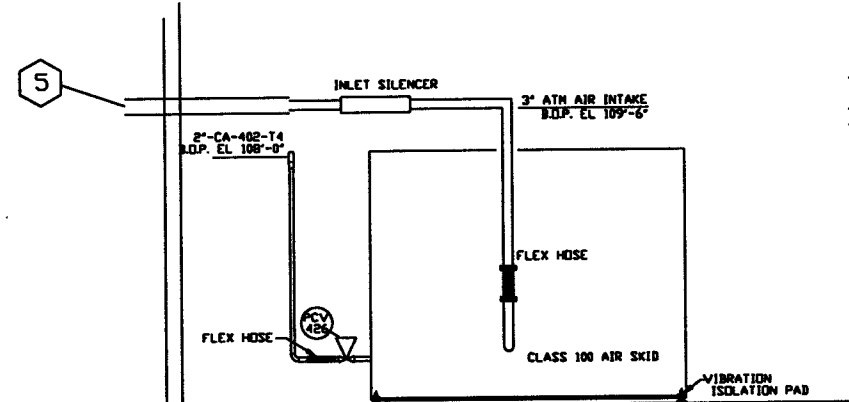


PLAN @ EL. 110'-0"



VACUUM EQUIPMENT AREA



ELEVATION B-B

NOT FOR CONSTRUCTION

PLAN @ FLOOR

Raymond D. Liatto, P.E.
5/7/96

PROCESS SYSTEMS INTERNATIONAL, INC.
20 WALRUP DR. WESTBOROUGH, MASSACHUSETTS 01581 USA

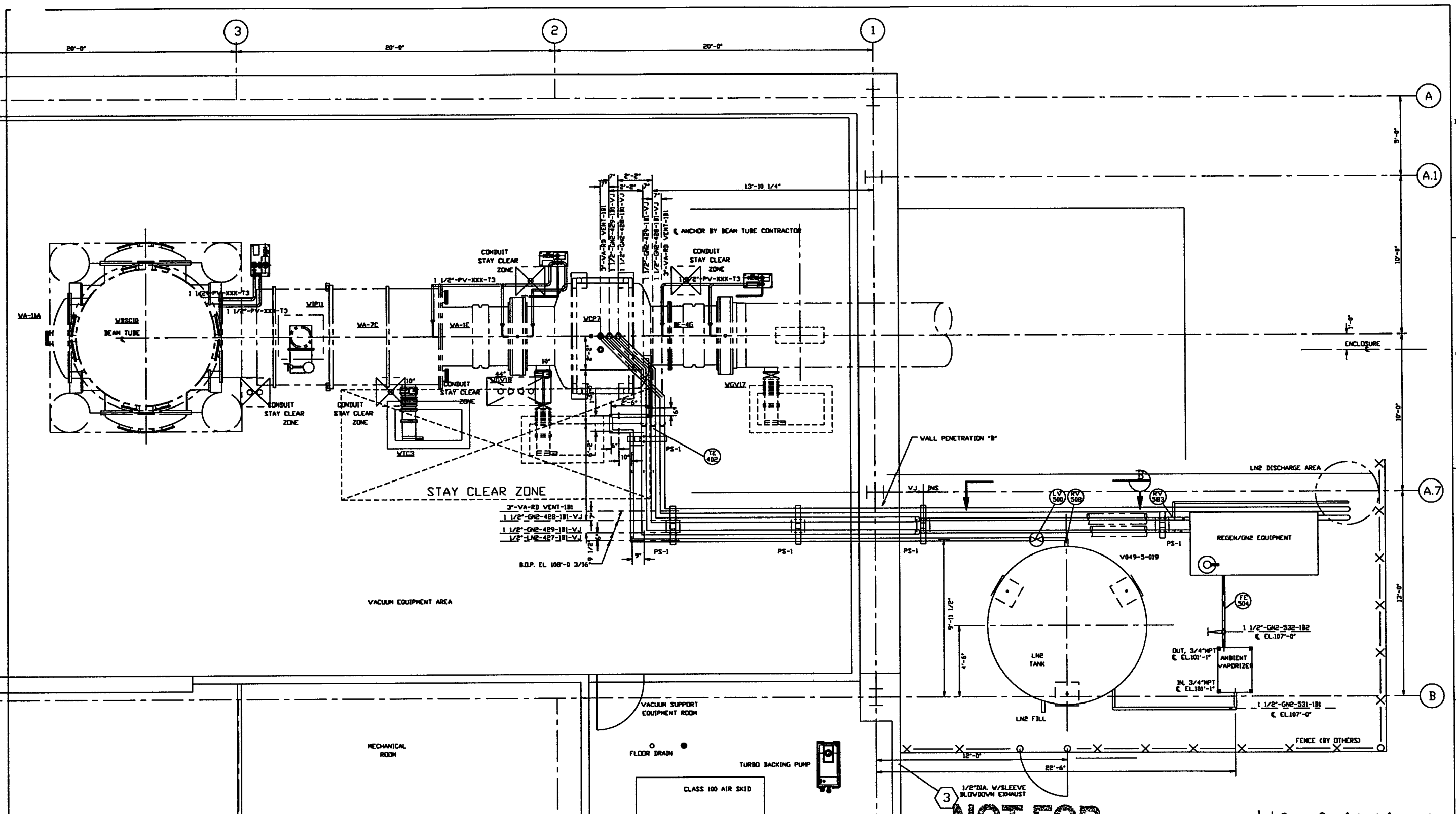
PIPING ARRANGEMENT, PLAN
LEFT END STATION
WASHINGTON SITE
LIGO VACUUM EQUIPMENT

UNLESS OTHERWISE SPECIFIED DIMENSIONS ARE IN INCHES TOLERANCES: FRACTIONAL & DECIMAL DIMENSIONS: TWO PLACE DECIMALS: THREE PLACE DECIMALS: FINISHED SURFACE DIMENSIONS: REMOVE ALL BARS		DO NOT SCALE THIS DRAWING USED ON: NEXT ASSY:		0 PI REV		ISSUED FOR FOR PRELIMINARY DESIGN DESCRIPTION		GV RH DATE 4/30/96 0153		CAD FILE V0495030/5030S1		SIZE D		DWG. NO. V049-5-030		REV. 0	
PRIMARY AND CONFIDENTIAL DRAWING CONTAINS PROPRIETARY INFORMATION BELONGING TO PROCESS SYSTEMS INTERNATIONAL, INC. OR ITS AFFILIATED COMPANIES AND SHALL BE USED ONLY FOR THE PURPOSES FOR WHICH IT WAS SUPPLIED. IT SHALL NOT BE COPIED, REPRODUCED OR OTHERWISE USED, AND SHALL, SUCH INFORMATION BE FURNISHED IN WHOLE OR IN PART TO OTHERS WITHOUT THE WRITTEN CONSENT OF PROCESS SYSTEMS INTERNATIONAL, INC. AND SHALL BE RETURNED UPON REQUEST.		110102 LIGO VACUUM EQUIPMENT END STATION		0 PI REV		ISSUED FOR FOR PRELIMINARY DESIGN DESCRIPTION		GV RH DATE 4/30/96 0153		CAD FILE V0495030/5030S1		SIZE D		DWG. NO. V049-5-030		REV. 0	
BVMG. NO. DESCRIPTION REFERENCE DRAWINGS		BVMG. NO. DESCRIPTION		BVMG. NO. DESCRIPTION		BVMG. NO. DESCRIPTION		BVMG. NO. DESCRIPTION		BVMG. NO. DESCRIPTION		BVMG. NO. DESCRIPTION		BVMG. NO. DESCRIPTION		BVMG. NO. DESCRIPTION	

SCALE 3/8" = 1'-0"

SHEET 1 OF 2

LIGO D961186-00-V
 10.10.1996 - 054749



PLAN @ EL. 112'-6"

NOT FOR CONSTRUCTION
Raymond A. Liatta, P.E.
 5/7/96

LIGO D961186-00-V

PROCESS SYSTEMS INTERNATIONAL INC. 20 MAULUP DR. WESTBOROUGH, MASSACHUSETTS 01581 USA			
PIPING ARRANGEMENT, PLAN LEFT END STATION WASHINGTON SITE LIGO VACUUM EQUIPMENT			
CAD FILE	SIZE	REV. NO.	REV.
V0495030/503082	D	V049-5-030	0
SCALE	SHEET		
3/8"-1'-0"	2 OF 2		

150001 - 96041 11 11 11