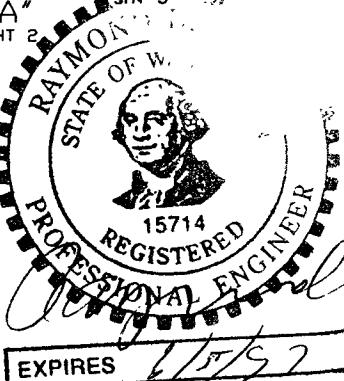
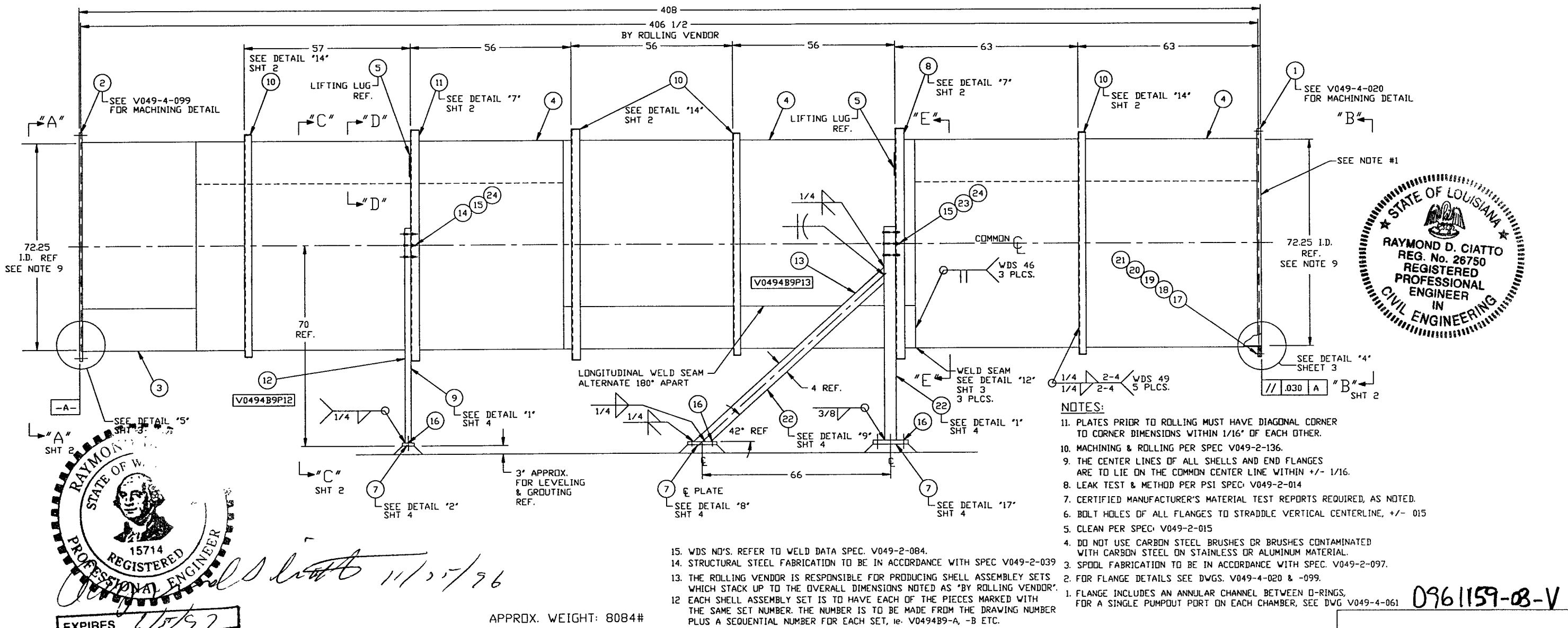


ITEM	PART NUMBER	SUFFIX	QTY	UM	DESCRIPTION
17	V049M020		1	EA	O-RING, VITON (PER SPEC V049-2-045)
18	V049M021		1	EA	O-RING, VITON (PER SPEC V049-2-045)
19	202678	3	36	EA	BOLT, SA 193 B7, HEX, 7/8-9 UNC x 4" LG
20	202679	3	36	EA	NUT, SA 194 2H, HEX, 7/8-9 UNC
21	202581	3	72	EA	WASHER, STL, 1 3/4 OD x 15/16 ID x 1/4 THK
22		1	23	FT	TUBE STEEL 4"x 4"x 1/2" A500 GR B
23	V049M759	3	6	EA	BOLT, 5/8-11 UNC x 5 1/2" LG, A325
24	V049M773	3	12	EA	WASHER, LOCK, 5/8, A325
25	V049A061		1	EA	3/4" O.D. ELBOW x 2 3/4" O.D. CONFLAT FLANGE

ITEM	PART NUMBER	SUFFIX	QTY	UM	DESCRIPTION
1	V0494020		1	EA	FLANGE, GROOVED, 72 1/4" ID X 80" OD
2	V0494099		1	EA	FLANGE, FLAT FACED, 72 1/4" ID X 80" OD
3	V0494B9P3		1	EA	SHELL, 304/304L SST, 1/4" THK.
4	V0494B9P4		3	EA	SHELL, 304/304L SST, 1/4" THK.
5	V049M852	3	3	FT	BAR, 304 SST, 3/8" X 4"
6					
7		1	6	SF	PLATE, CS A36, 1 3/8" THK
8	V049M822	1	1	EA	SUPPORT RING, 4"x 4"x 1/2" 304 SST
9		1	15	FT	TUBE STEEL (TS) 4" X 2" X 3/16" A500 GR B
10	V049M813	1	4	EA	SUPPORT RING, 2 1/2" X 2 1/2" X 1/4" 304 SST.
11	V049M814	1	1	EA	SUPPORT RING, 4"x 4"x 1/4" 304 SST
12	V0494B9P12		2	EA	SUPPORT ASSY.
13	V0494B9P13		2	EA	SUPPORT ASSY
14	V049M753	3	6	EA	BOLT, 5/8-11 UNC X 3 1/2" LG, A325
15	V049M755	3	12	EA	NUT, 5/8-11 UNC, A325
16			16	EA	ANCHOR 1" DIA HILTI HVA B 1/4" MIN. EMBED

* ELECTROLESS NICKEL PLATE



DWG NO.	DESCRIPTION	REFERENCE DRAWINGS	DWG NO.	DESCRIPTION

REV	DESCRIPTION	ISSUE DESCRIPTION
3	REISSUED FOR FABRICATION	
2	DESIGN UPDATE/ISSUED FOR FABRICATION	
1	DESIGN UPDATE/FABRICATION (SHELL ONLY)	
0	ISSUED FOR FDR	
P1	PRELIMINARY	

DATE	BY	CHECKED	DATE
11/22/96	PV	DA	10/10/96
10/10/96	DA	PV	10/10/96
4/29/96	DA	GW	3/20/96

PROCESS SYSTEMS INTERNATIONAL INC.
20 WALKUP DR., WESTBOROUGH, MASSACHUSETTS 01581 USA

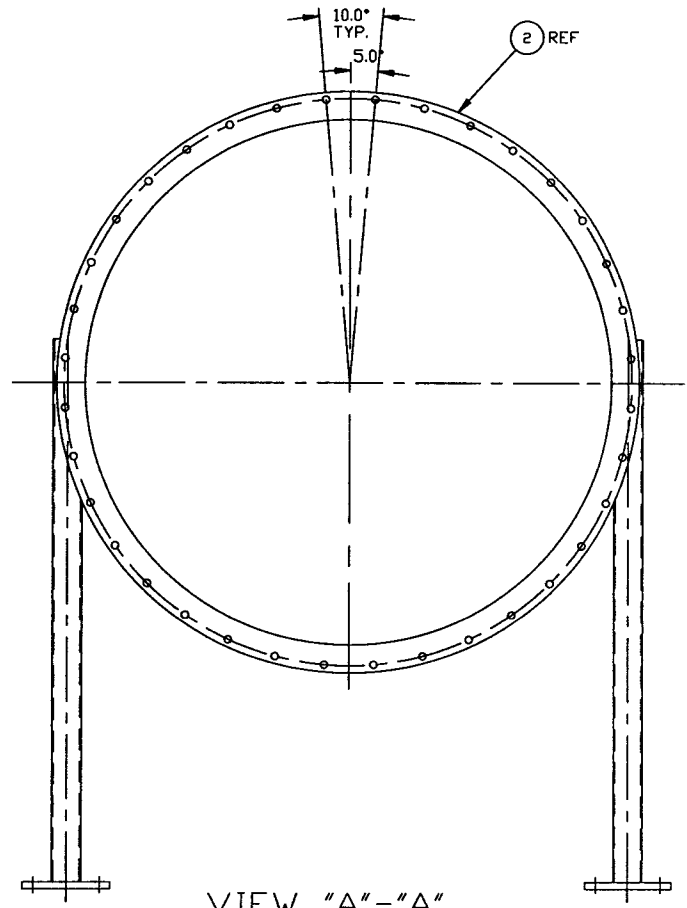
SPPOOL B-9
72.25" ID
LIGO VACUUM EQUIPMENT

CAD FILE: V0494B9/4B9S1
Dwg No: V049-4-B9
Scale: 3/4" = 1'-0"

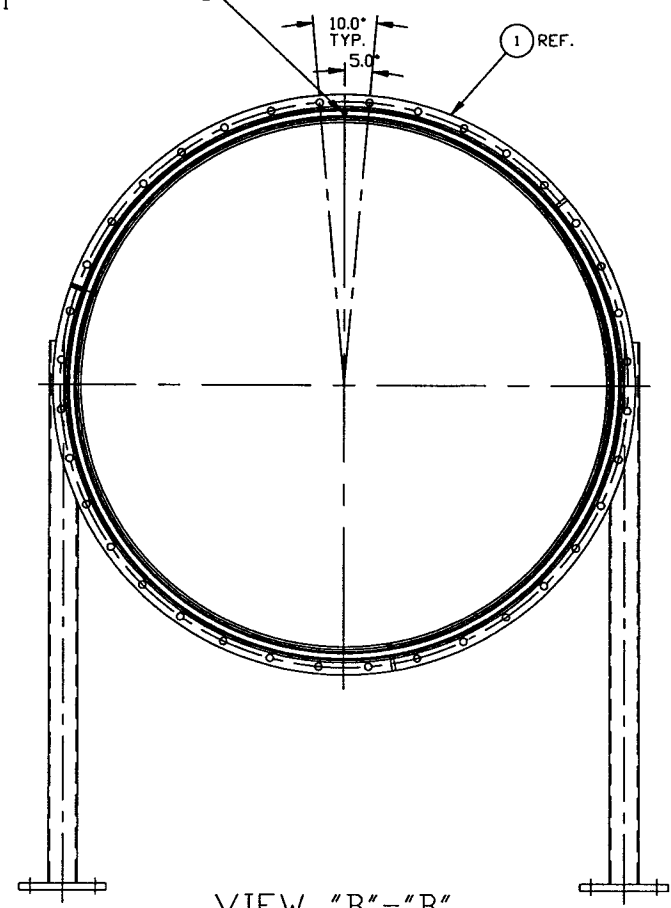
0961159-08-V

REV. 12 961511

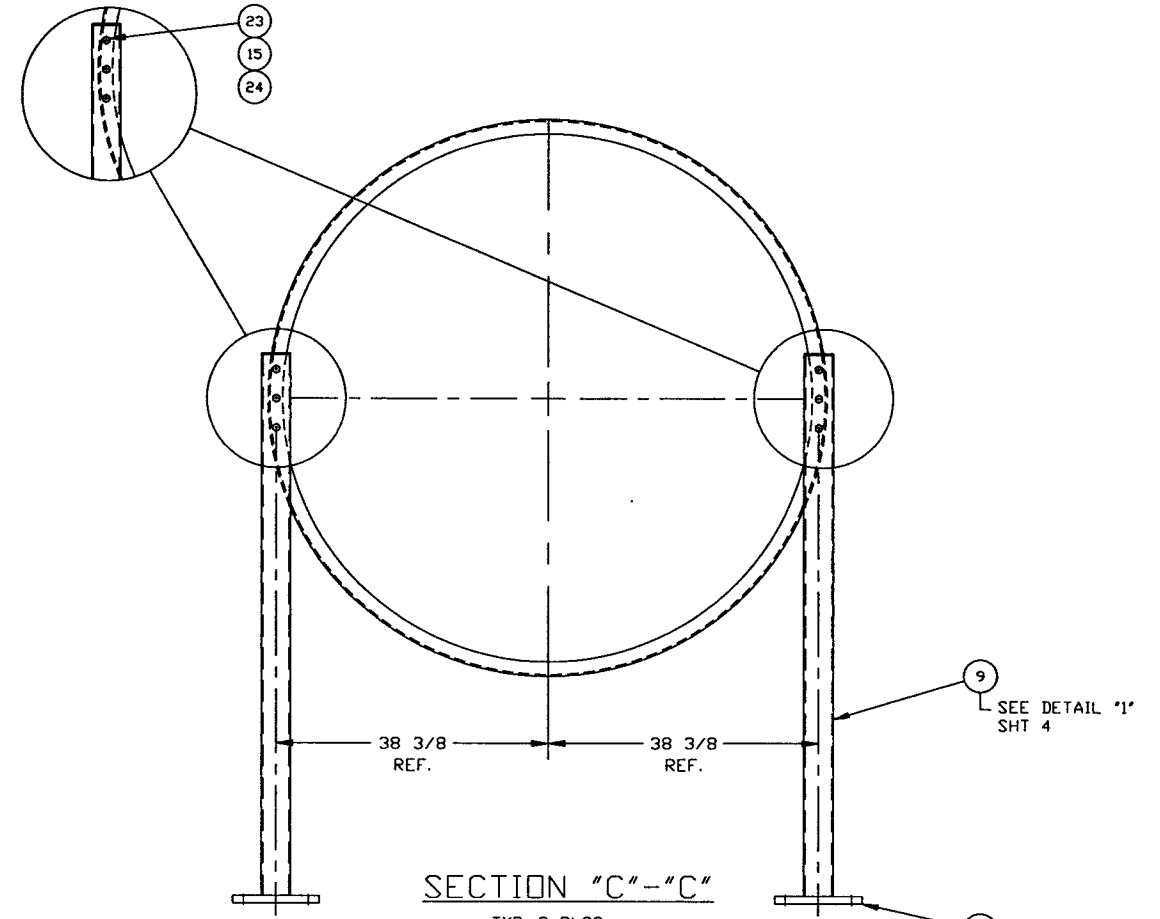
5/8" ANNULUS PIPING PORT
SEE NOTE 1



VIEW "A"- "A"

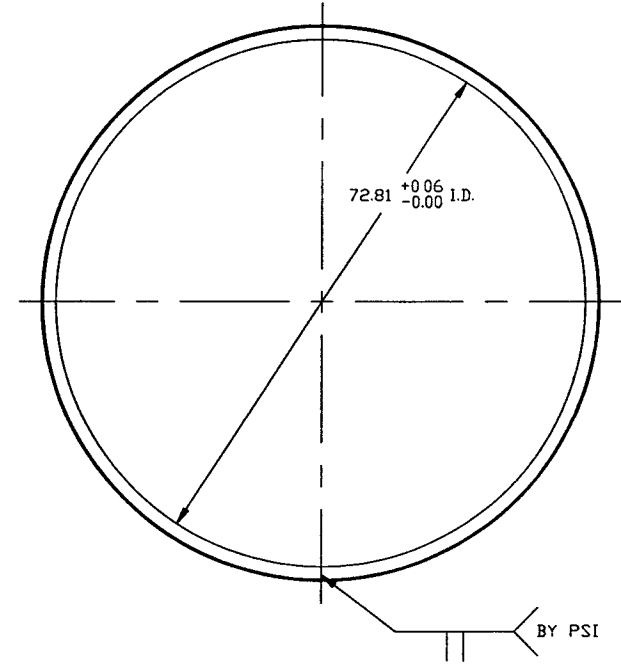


VIEW "B"- "B"



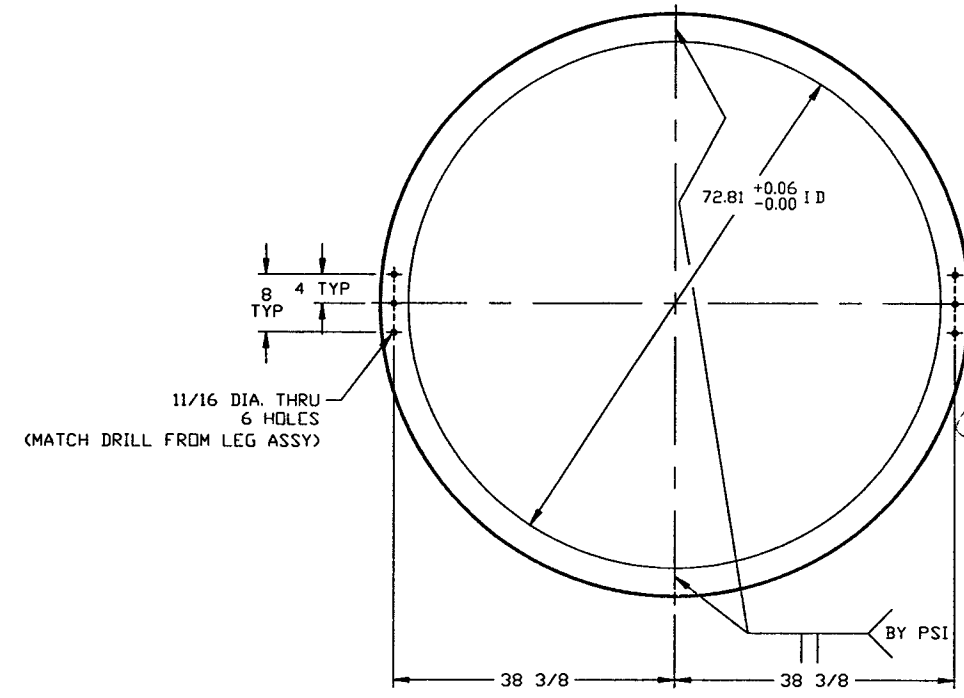
SECTION "C"- "C"

TYP. 2 PLCS.

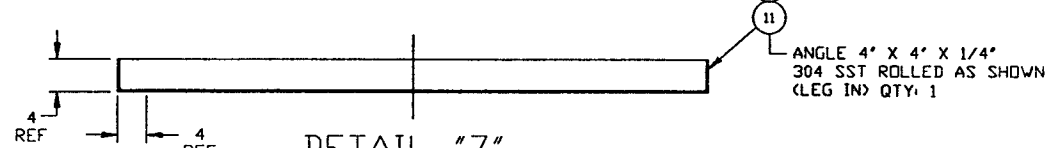
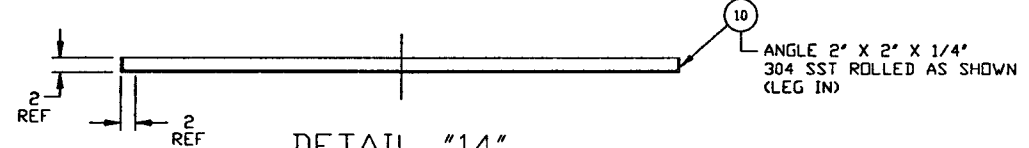
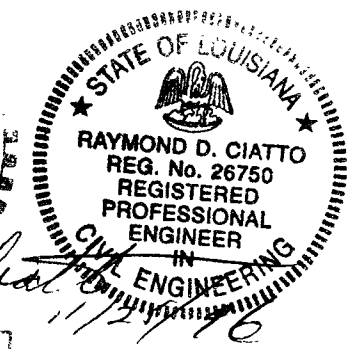


DETAIL "14"

QTY: 4

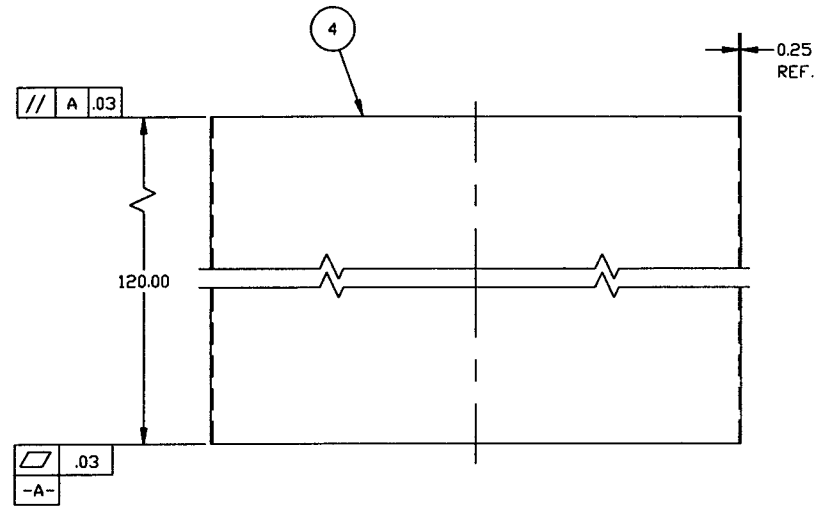


DETAIL "7"

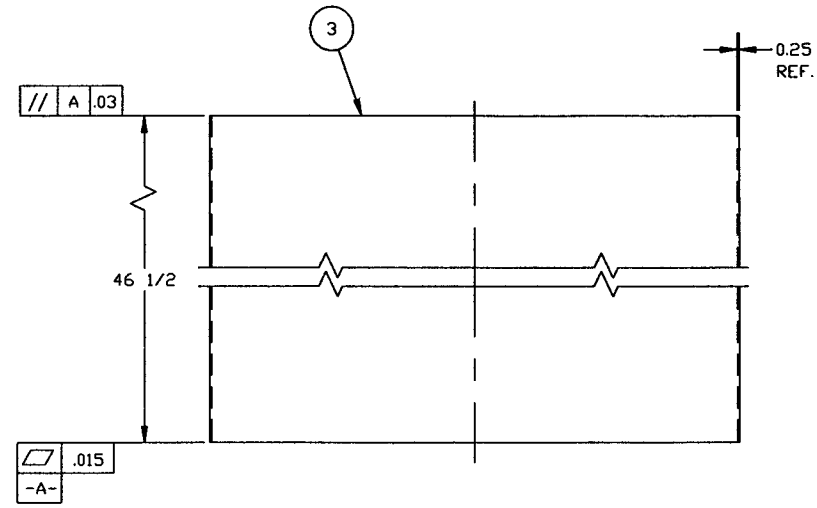


PROCESS SYSTEMS INTERNATIONAL INC. 20 WALKUP DR. WESTBOROUGH, MASSACHUSETTS 01581 USA			
SPOOL B-9 72.25" ID LIGO VACUUM EQUIPMENT		SIZE D	DWG. NO. V049-4-B9
CAD FILE V0494B9/4B9S2	SCALE AS NOTED	REV 3	SHEET 2 OF 4

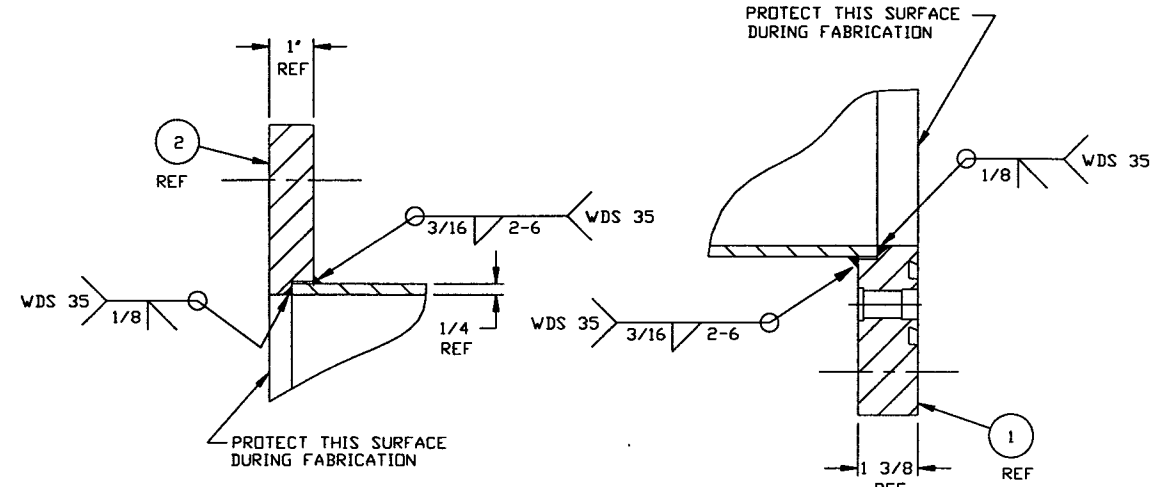
NOV 21 1996 - 17:56:25



DETAIL "3"
 QTY: 3
 MAKE FROM V049M154-1

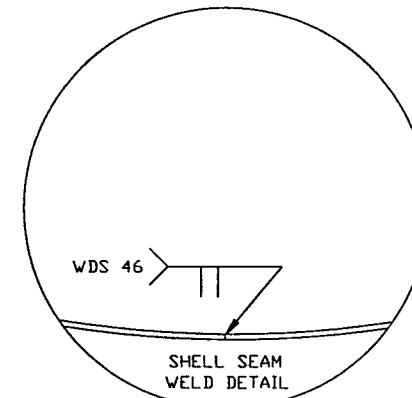
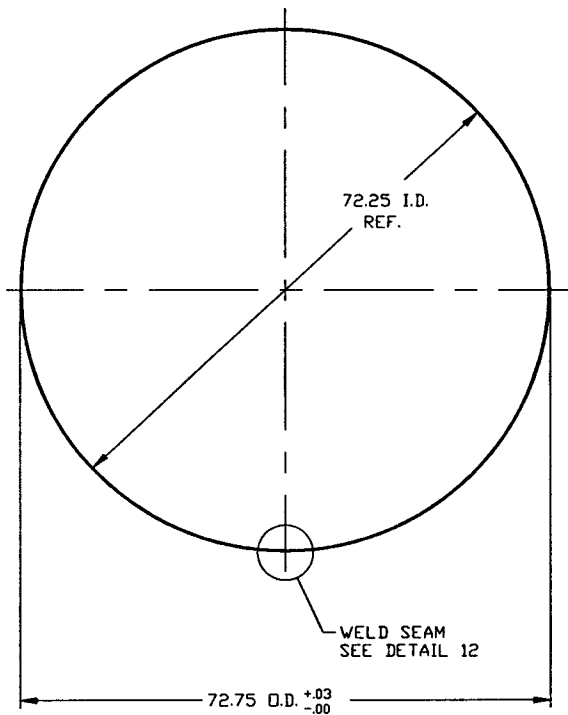
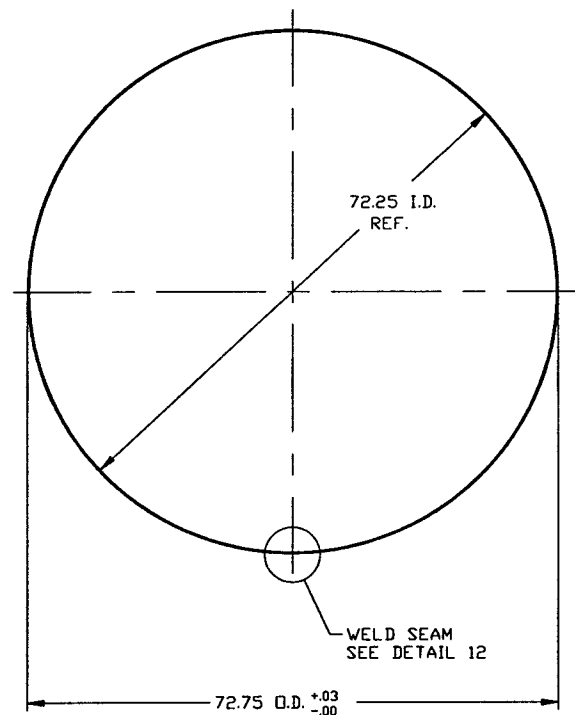


DETAIL "15"
 QTY: 1
 MAKE FROM V049M164-1

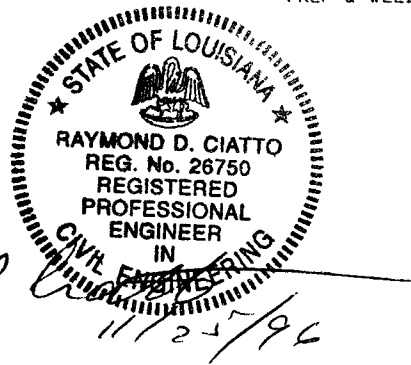
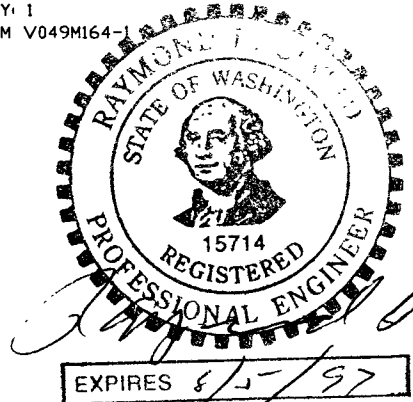


DETAIL "5"

DETAIL "4"

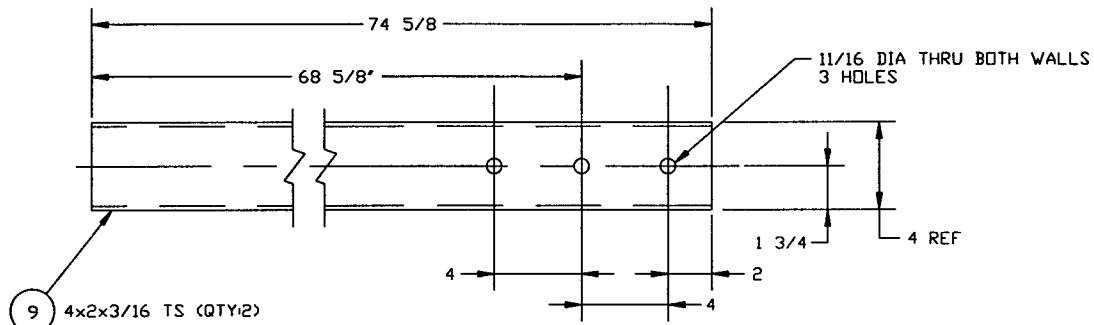


DETAIL "12"
 SHELL SEAM
 PREP & WELD



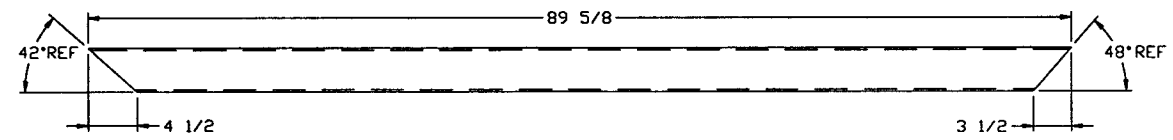
PROCESS SYSTEMS INTERNATIONAL, INC. <small>20 WALKUP DR. WESTBOROUGH, MASSACHUSETTS 01581 USA</small>			
SPOOL B-9 72.25" I.D. LIGD VACUUM EQUIPMENT			
CAD FILE	SIZE	DWG. NO.	REV.
V0494B9/4B9S3	D	V049-4-B9	3
SCALE	AS NOTED	SHEET	3 OF 4

NOV 22, 1996 - 151016

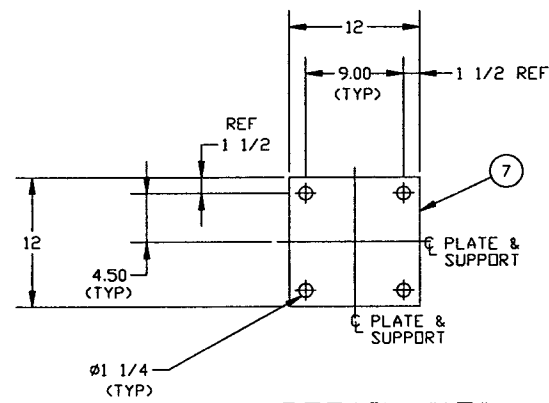


- 9 4x2x3/16 TS (QTY:2)
- 22 4x4x1/2 TS (QTY:2)

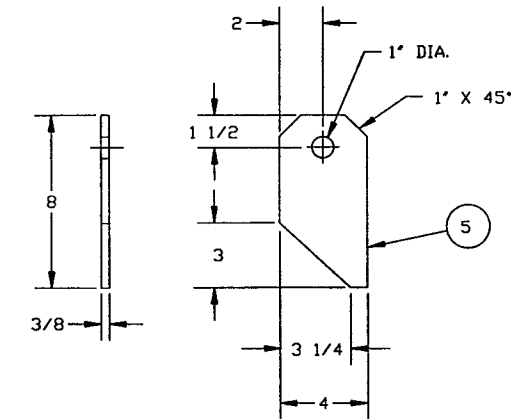
DETAIL "1"



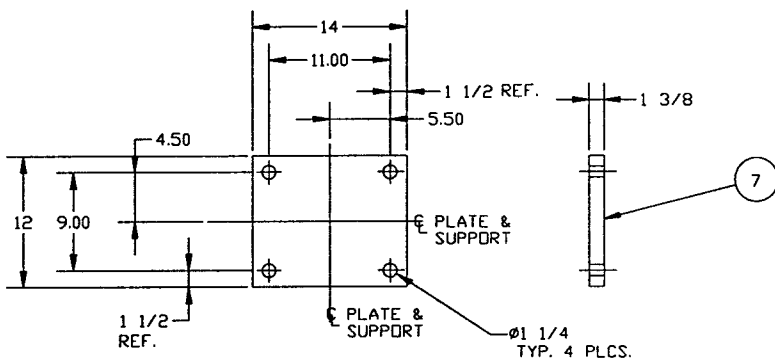
DETAIL "9"
QTY: 2



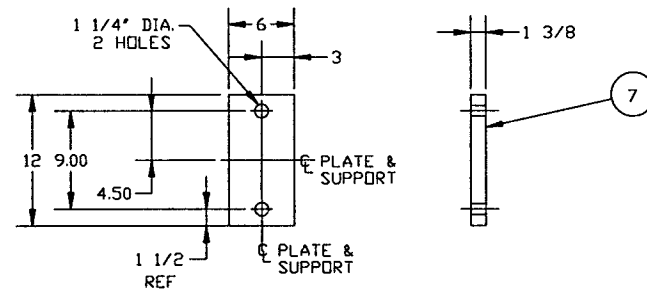
DETAIL "17"
QTY: 2



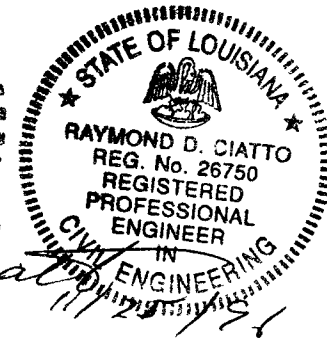
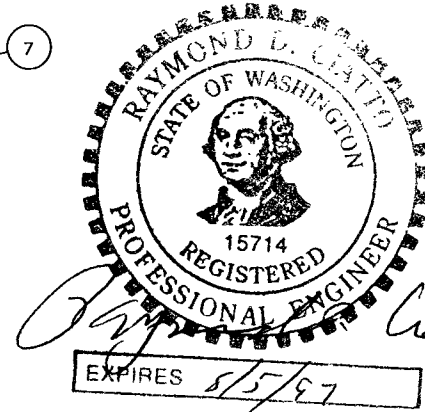
DETAIL "16"
QTY: 4



DETAIL "8"
QTY: 2



DETAIL "2"
QTY: 2



SEE SHEET 1 FOR REVISIONS

PROCESS SYSTEMS INTERNATIONAL INC. 20 WALKUP DR. WESTBOROUGH, MASSACHUSETTS 01581 USA			
SPOOL B-9 72 1/4" I.D. LIGD VACUUM EQUIPMENT			
CAD FILE V0494B9/4B9S4	SIZE D	DWG. NO. V049-4-B9	REV. 3
SCALE 1"=1'-0"	SHEET 4 OF 4		

Nov 12 1996 - 18:02:24