

**NOT FOR
CONSTRUCTION**

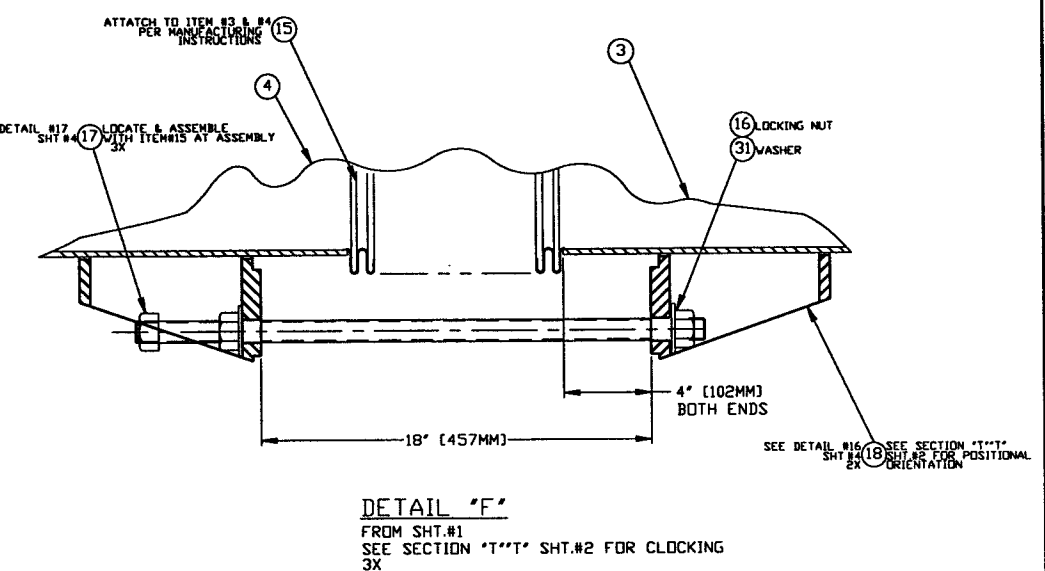
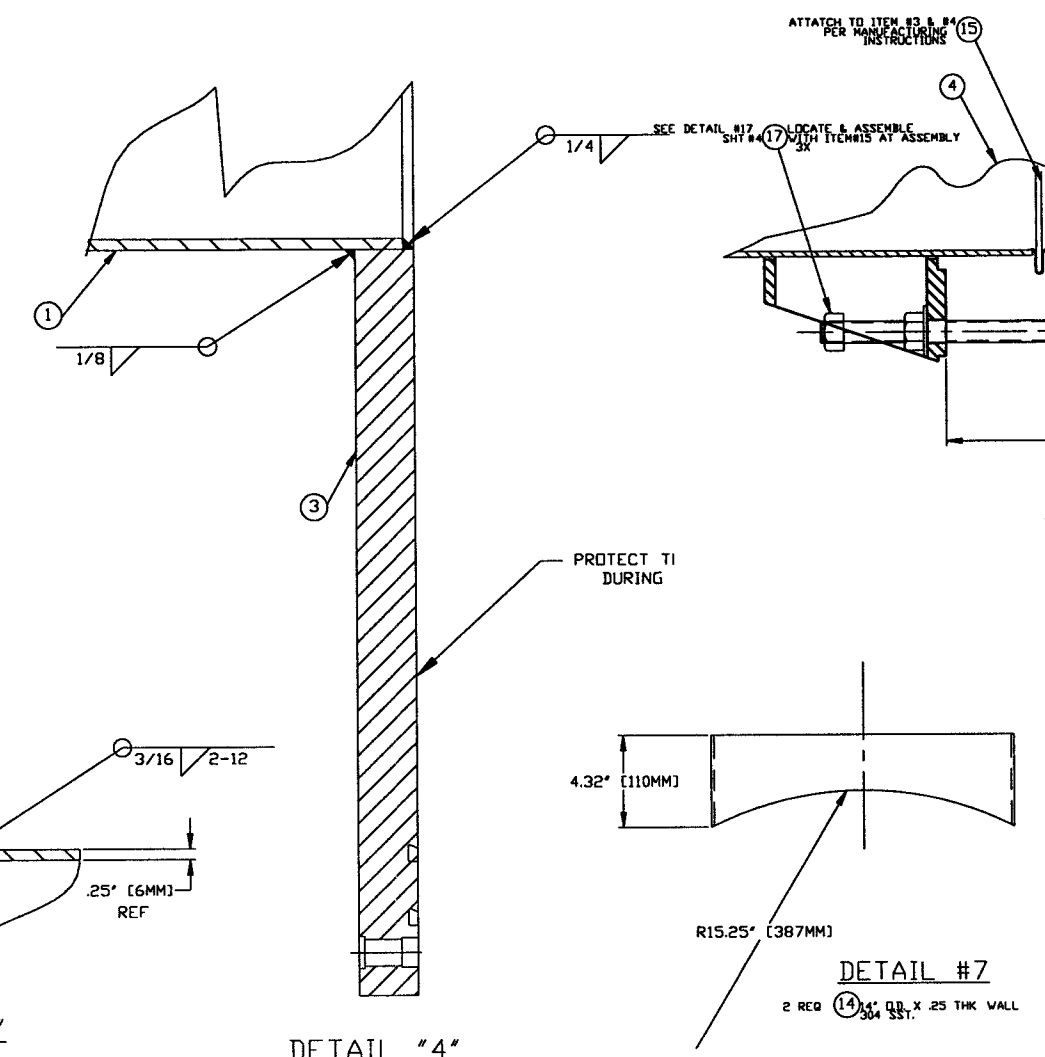
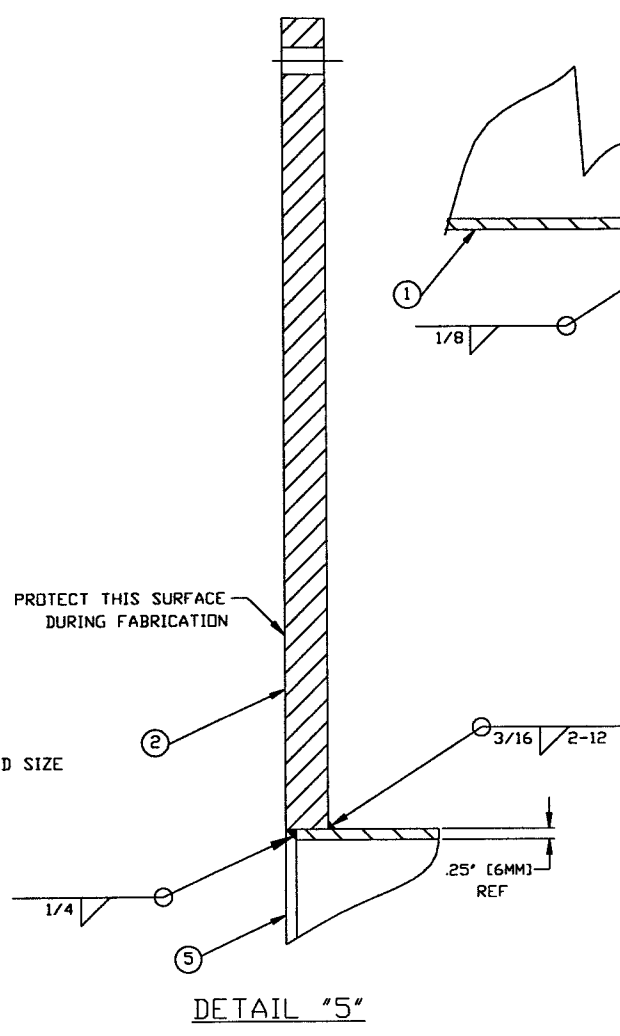
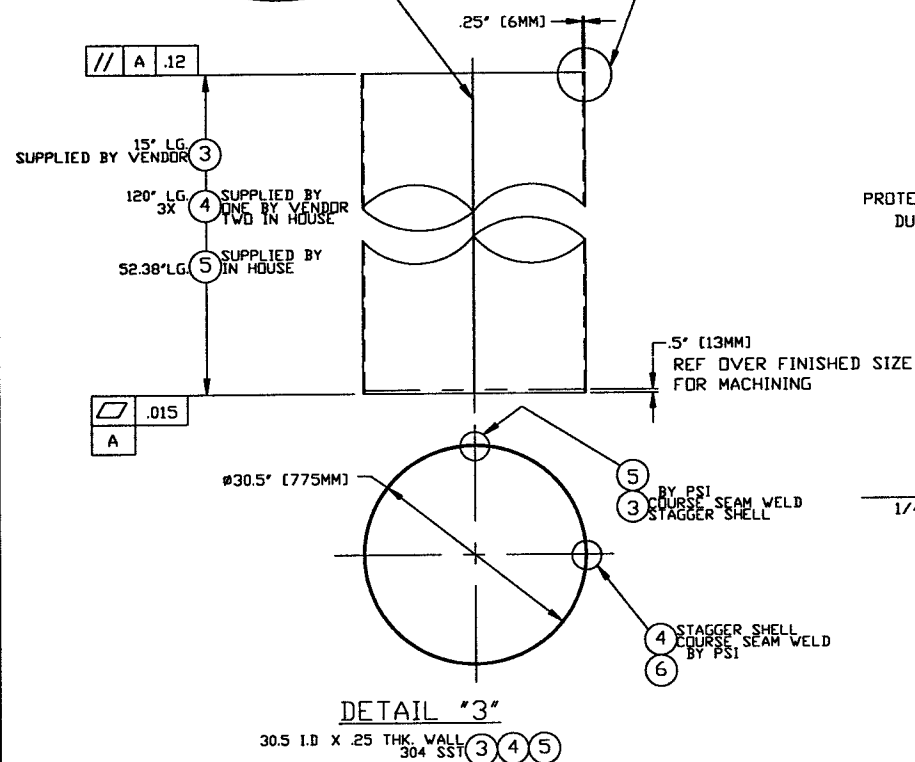
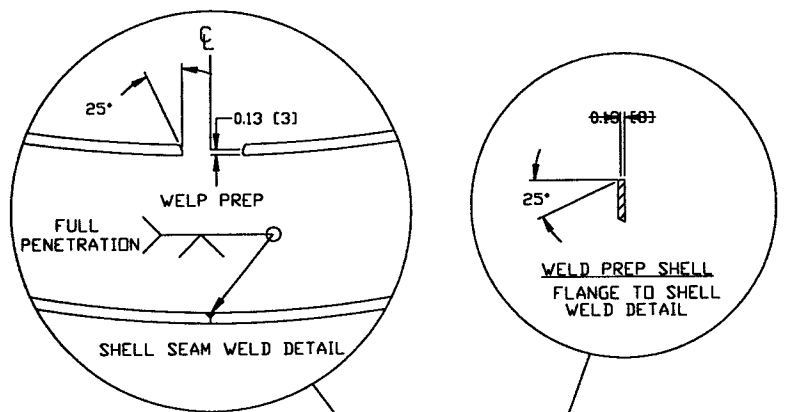
Raymond D. Ciatto, PE
5/7/96

HOLD

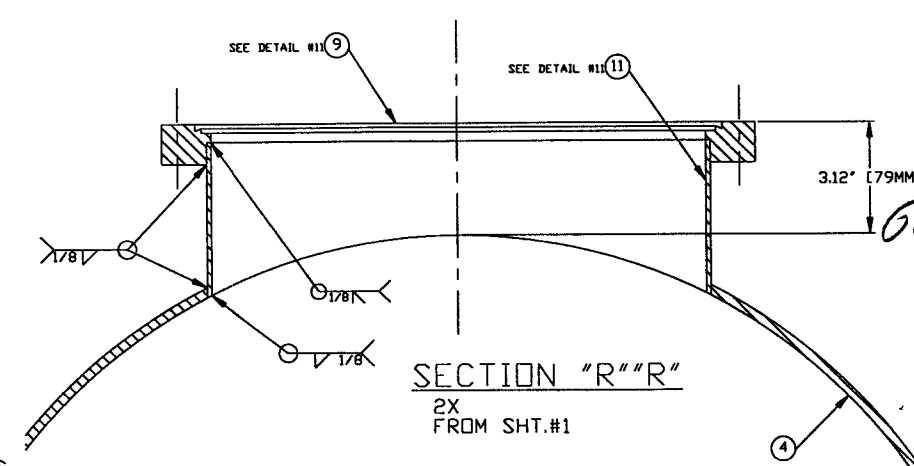
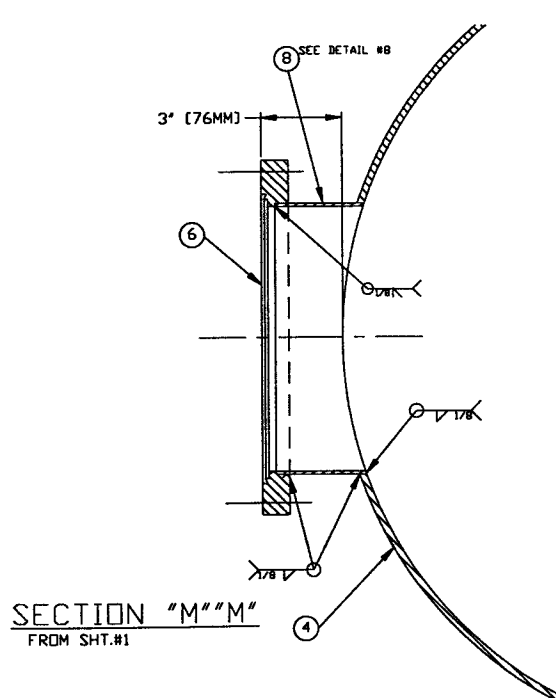
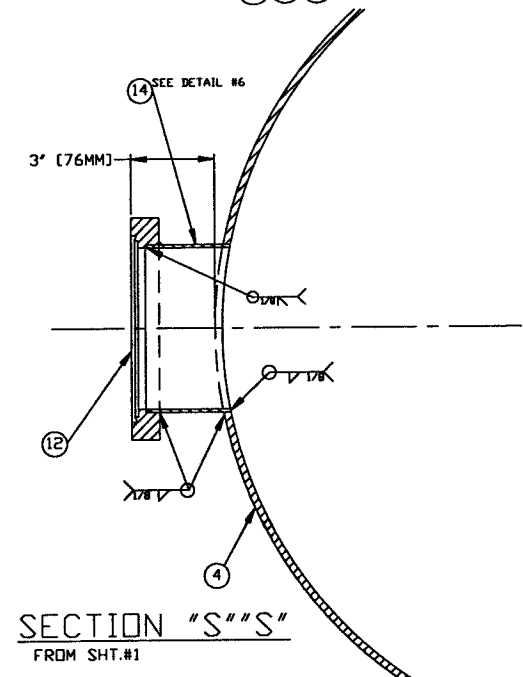
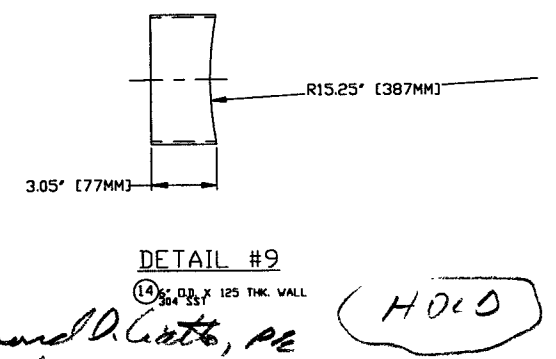
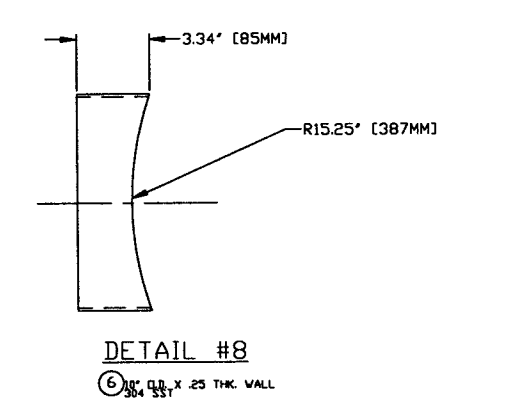
PROCESS SYSTEMS INTERNATIONAL, INC. 20 WALKUP DR. WESTBOROUGH, MASSACHUSETTS 01581 USA			
SPOOL B-5A 30.50" ID x 60.50" ID MODE CLEANER TUBE LIGO VACUUM EQUIPMENT			
CAD FILE	SIZE	ENG. NO.	REV.
V049485A/40485AS2	D	V049-4-B5A	0
SCALE	NONE	SHEET	2 OF 4

L160 0961155-00-V

REV 04, 1996 - 072721



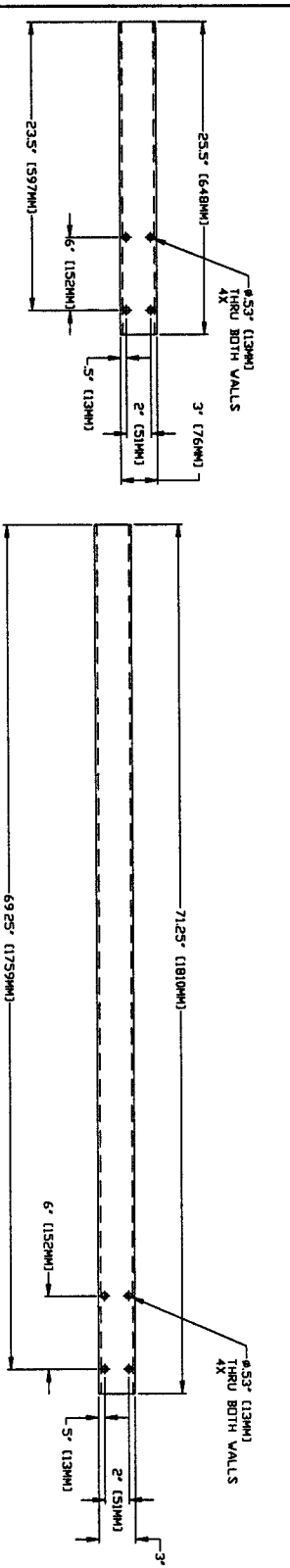
NOT FOR CONSTRUCTION



PROCESS SYSTEMS INTERNATIONAL INC. 20 WALKUP DR. WESTBOROUGH, MASSACHUSETTS 01581 USA			
SPOOL B-5A 30.50" ID x 60.50" ID MODE CLEANER TUBE LIGD VACUUM EQUIPMENT			
CAD FILE V0494B5A/4B5AS3	SIZE D	DWG. NO. V049-4-B5A	REV 0
SCALE AS NOTED	SHEET 3 OF 4		REV 0

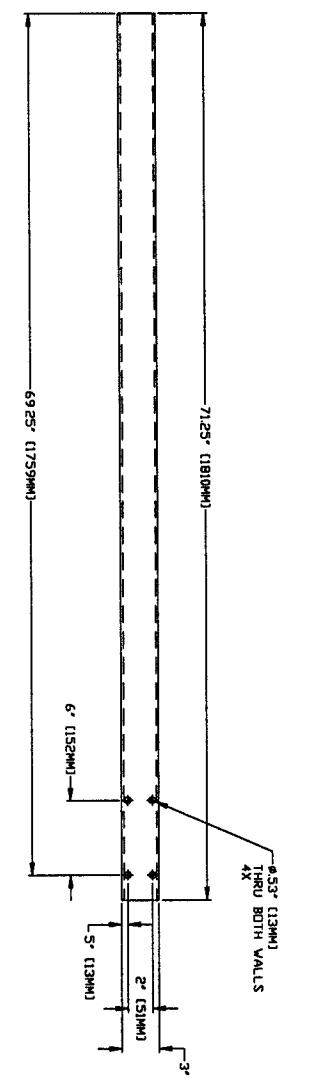
LIG01D961155-00-V

Apr 27, 1996 - 142527



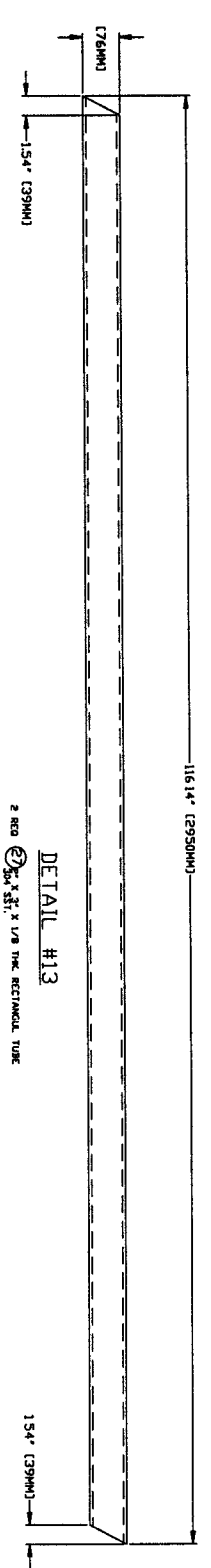
DETAIL #14

2 REQ. 3/8\"/>



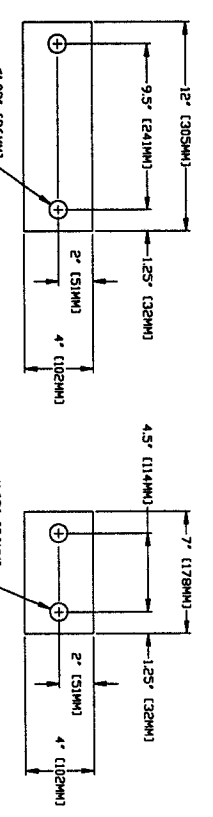
DETAIL #11

4 REQ. 3/8\"/>



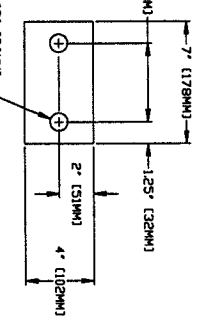
DETAIL #13

2 REQ. 3/8\"/>



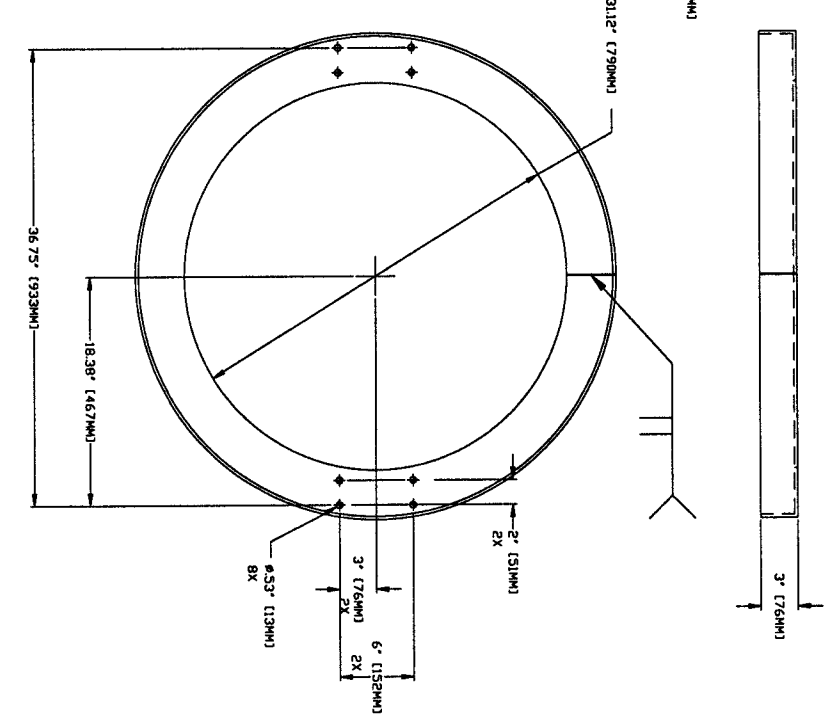
DETAIL #15

2 REQ. 1/8\"/>



DETAIL #12

2 REQ. 1/8\"/>



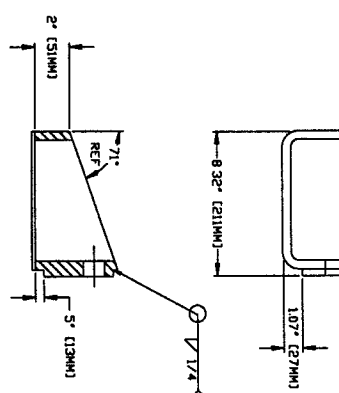
DETAIL #10

3 REQ. 3/8\"/>



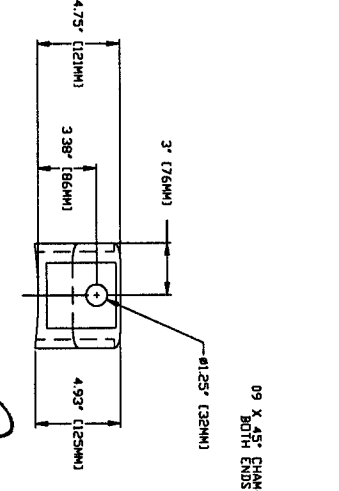
DETAIL #9

4 REQ. 3/8\"/>



DETAIL #16

18.80\"/>



DETAIL #17

3 REQ. 3/8\"/>

NOT FOR CONSTRUCTION

CONSTRUCTION

Raymond A. White, PE
 1/7/96

PROCESS SYSTEMS INTERNATIONAL, INC.	
30.50" ID X 60.50" TD	
LITIO CLEANER TUBE	
LITIO VACUUM EQUIPMENT	
DATE	REV
01/07/96	0
BY	APP
RAY	W
SCALE	AS SHOWN

1001 D96155-00-1