

**NOT FOR
CONSTRUCTION**

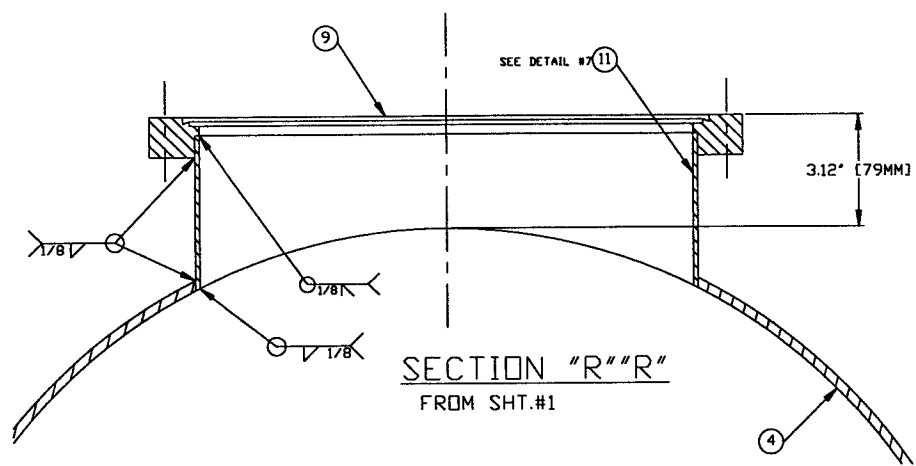
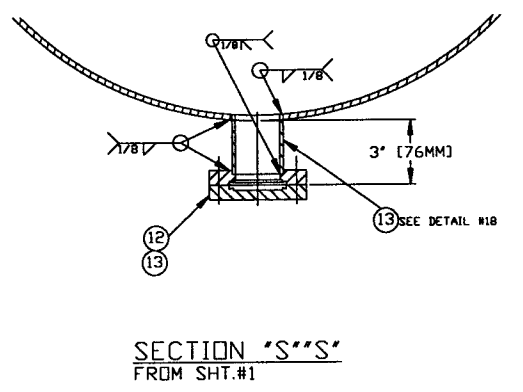
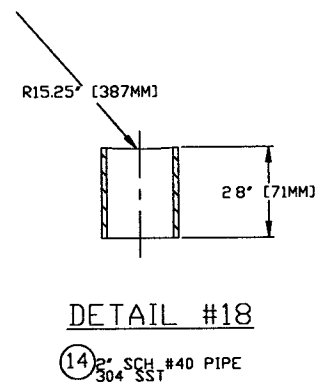
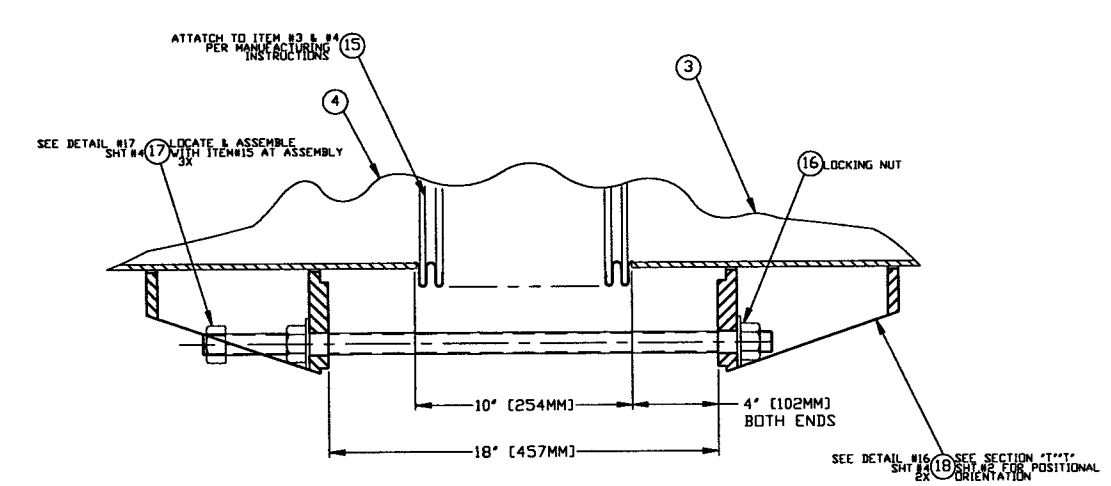
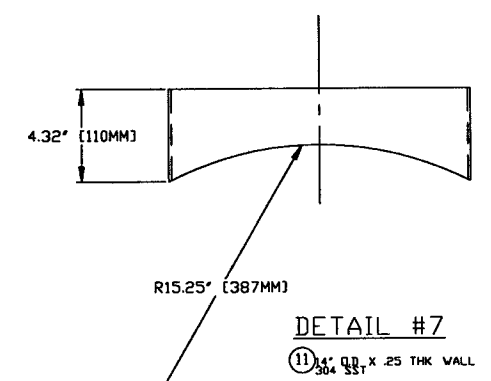
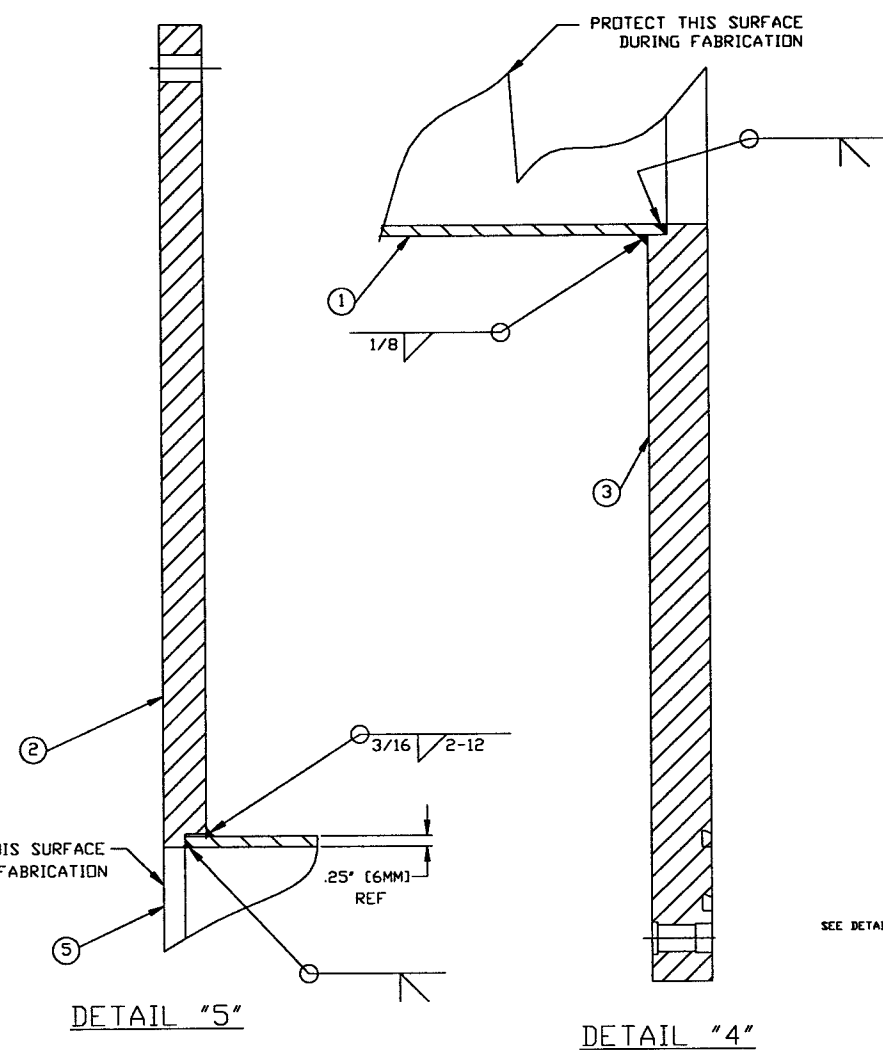
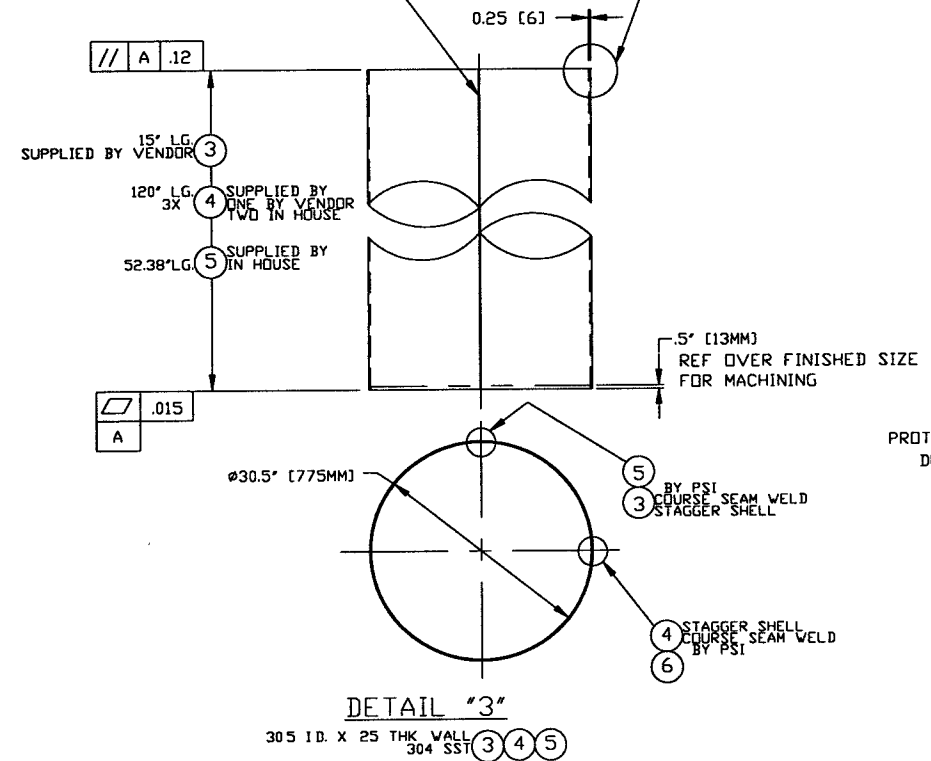
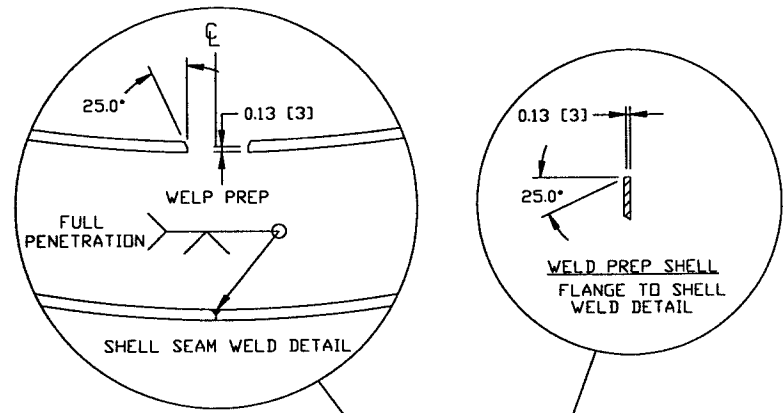
Raymond D. Lintz, PE
5/16/96
HOLD

LIGO D961152-00-V

PROCESS SYSTEMS INTERNATIONAL INC. 20 WALKUP DR. WESTBOROUGH, MASSACHUSETTS 01581 USA			
SPOOL B-2B 30.50" ID x 60.50" ID MODE CLEANER TUBE LIGO VACUUM EQUIPMENT			
CAD FILE	SIZE	DWG. NO.	REV.
V0494B2B/404B2B2	D	V049-4-B2B	0
SCALE	NONE	SHEET	2 OF 4

Apr 27, 1996 - 132705

NOT FOR CONSTRUCTION



Hold

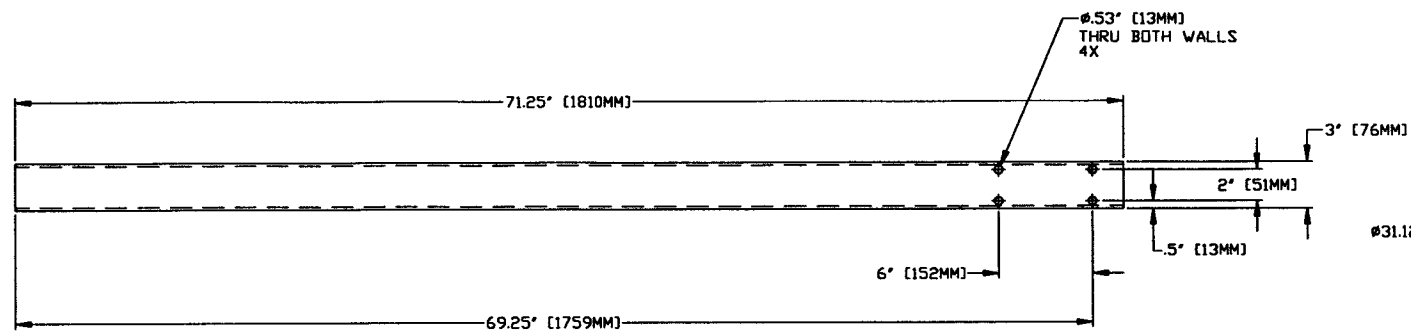
Raymond D. Gatto, PE

5/10/96

PROCESS SYSTEMS INTERNATIONAL INC. 20 WALKUP DR. WESTBOROUGH, MASSACHUSETTS 01581 USA			
SPOOL B-2B 30.50" ID x 60.50" ID MODE CLEANER TUBE LIGD VACUUM EQUIPMENT			
CAD FILE V0494B2B/494B2B53	SIZE D	DWG. NO. V049-4-B2B	REV 0
SCALE AS NOTED	SHEET 3 OF 4		REV 0

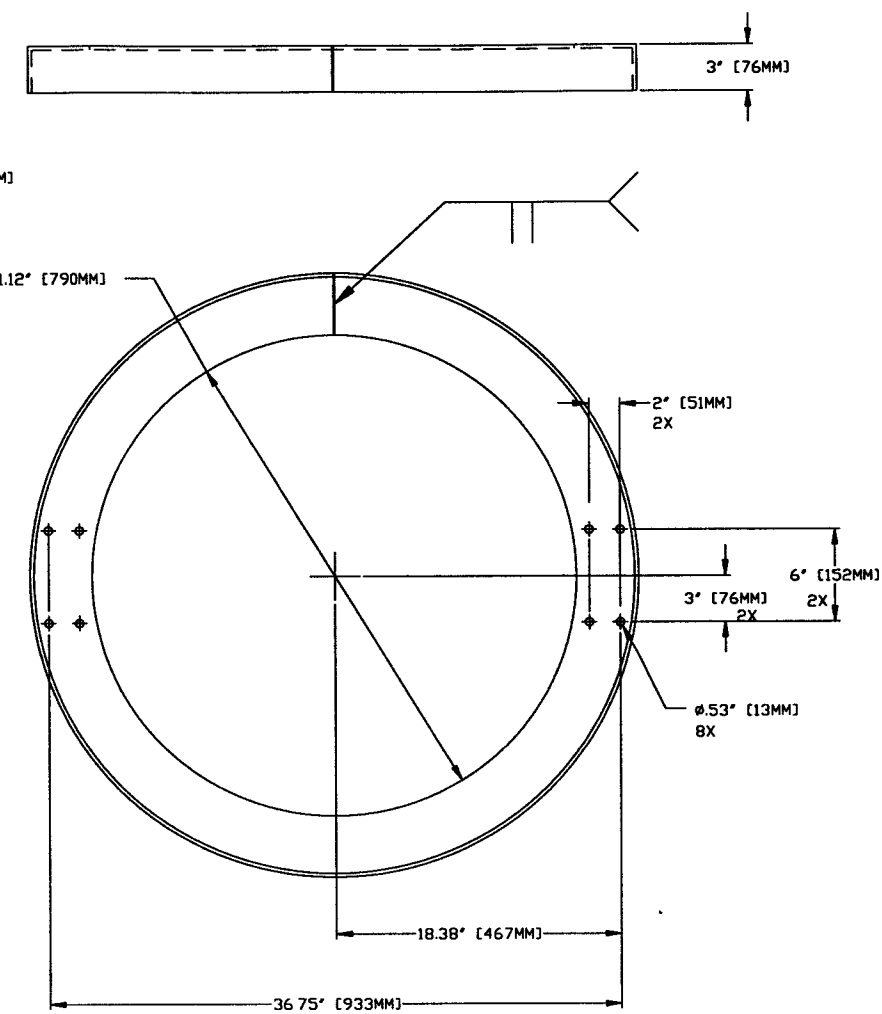
LIGD 0961152-00-V

REV 0 27, 1996 - 13-3136



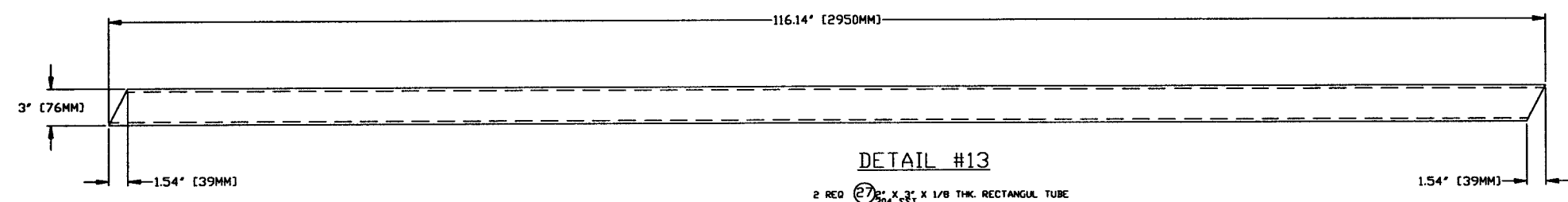
DETAIL #11

4 REQ (25) 2" X 3" X 1/8 THK. RECTANGUL. TUBE
304 S.S.T.



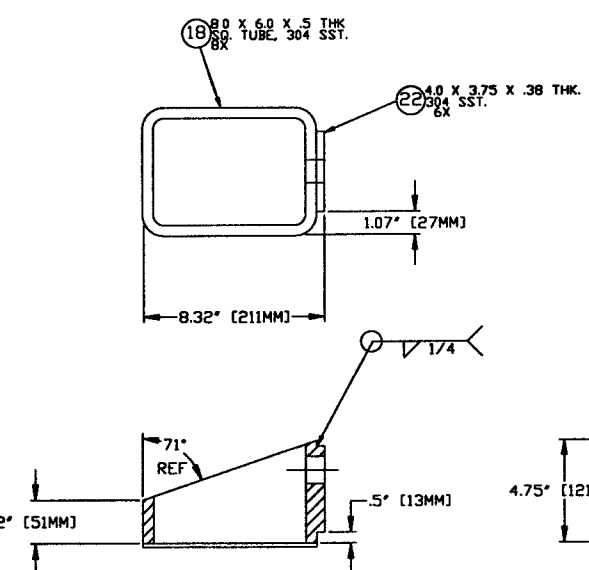
DETAIL #10

ROLL AS SHOWN
3 REQ (20) 4" X 3" X 1/4 THK ANGLE
304 S.S.T.



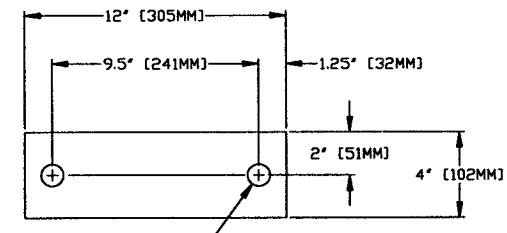
DETAIL #13

2 REQ (27) 2" X 3" X 1/8 THK. RECTANGUL. TUBE
304 S.S.T.



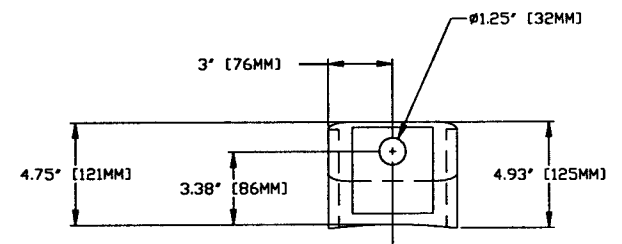
DETAIL #16

(18) 0.60 X 0.60 X .5 THK. TUBE, 304 S.S.T.
(22) 0.40 X 0.375 X .38 THK. 304 S.S.T.



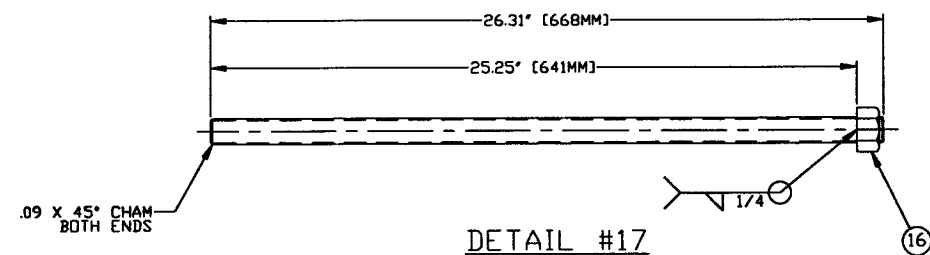
DETAIL #15

4 REQ (29) 12" X 4" X 3/4 THK. PLT.
304 S.S.T.



DETAIL #17

3 REQ (17) 1" BUNC-THREAD 1"-BUNC
304 S.S.T.



DETAIL #9

ROLL AS SHOWN
4 REQ (19) 2" X 2" X 1/4 THK ANGLE
304 S.S.T.

NOT FOR CONSTRUCTION

Gregory D. Coats, PE
5/6/96

17010
LIGO D961152-00-V

PROCESS SYSTEMS INTERNATIONAL INC. 20 WALKUP DR. WESTBOROUGH, MASSACHUSETTS 01581 USA			
SPOOL B-2B 30.50" ID x 60.50" ID MODE CLEANER TUBE LIGO VACUUM EQUIPMENT			
CAD FILE	SIZE	DWG. NO.	REV.
V0494B2B/494B2B54	D	V049-4-B2B	0
SCALE	NONE	SHEET	4 OF 4

APR 27, 1996 - 13395