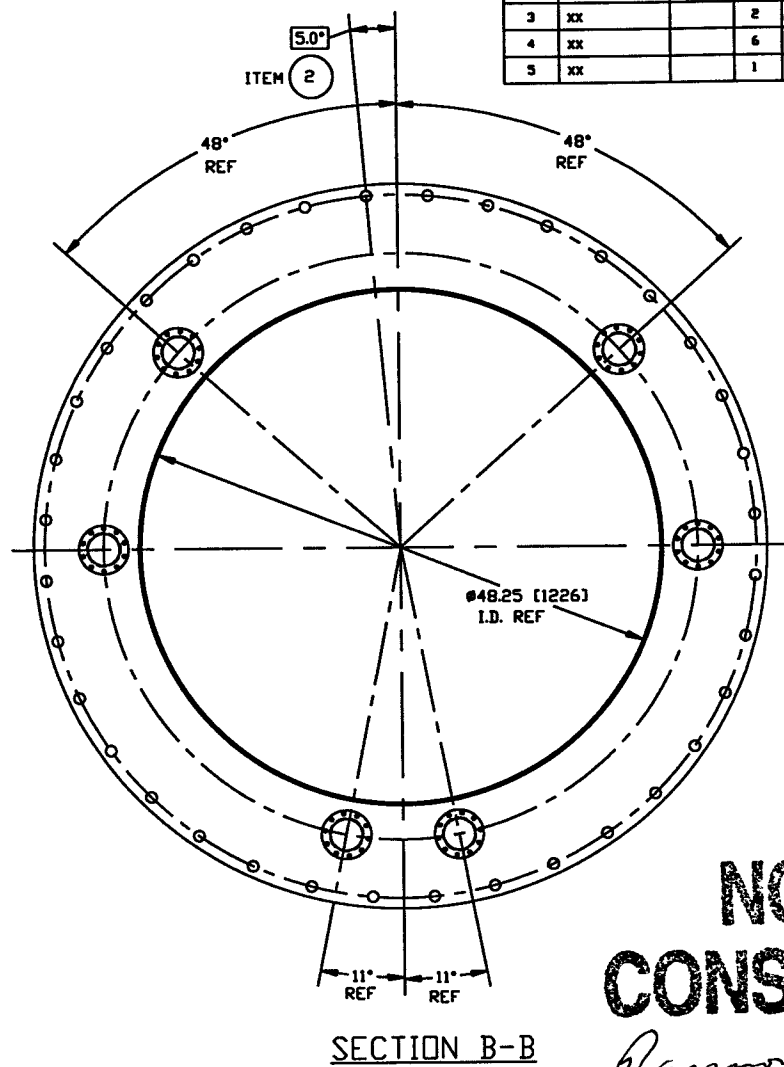
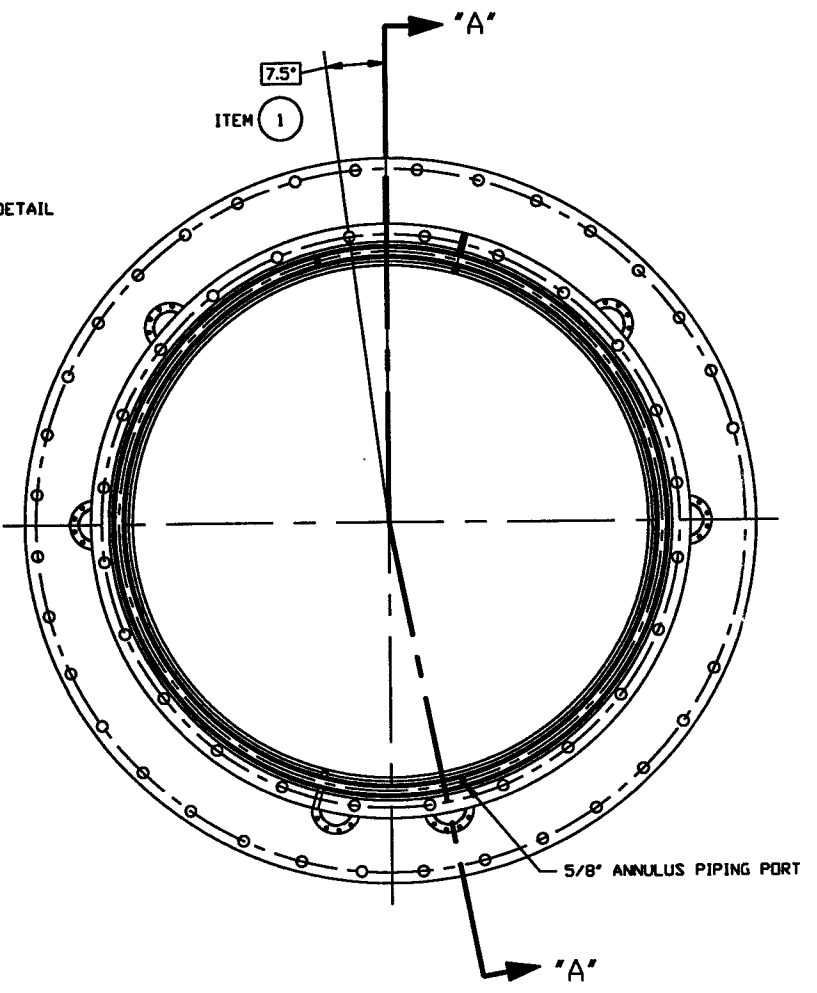
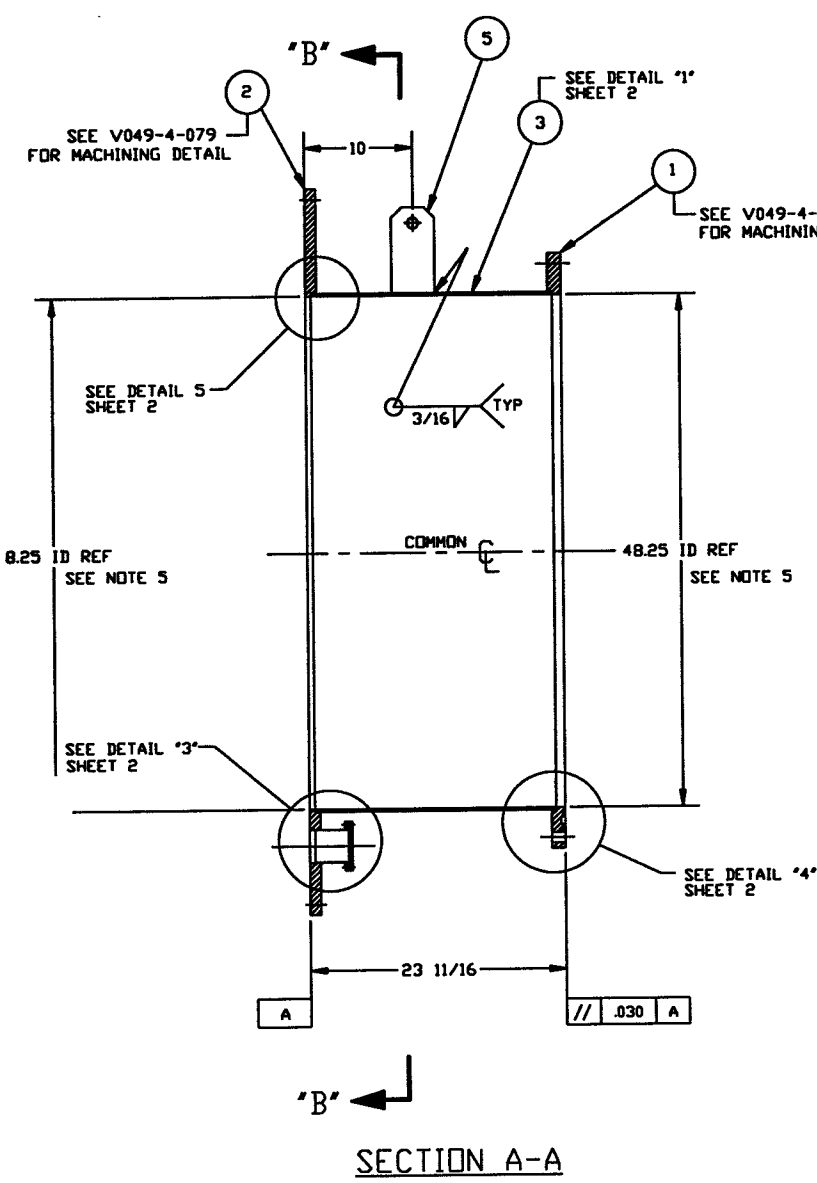


ITEM	PART NUMBER	SUFFIX	QTY	UM	DESCRIPTION
1	V049401B		1	EA	FLANGE, GROOVED, 48 1/4" ID X 56" OD X 1-1/4" THK
2	V0494079		1	EA	FLANGE, FLAT FACE, 48 1/4" ID X 68 1/4" OD X 1" THK
3	XX		2	FT	PLATE, 48 3/4" O.D. X 1/4" WALL SSSL 304L
4	XX		6	EA	FLANGE, CONFLAT= 4 5/8" O.D. X 3" TUBE
5	XX		1	EA	PLATE, 8"x4"x3/8" A36



NOT FOR CONSTRUCTION
Raymond D. Clatts, PE
 5/6/96

- NOTES:
- LEAK TEST & METHOD PER PSI SPEC: V049-2-014
 - CERTIFIED MANUFACTURER'S MATERIAL TEST REPORTS REQUIRED.
 - BOLT HOLES TO STRADDLE CENTERLINES AS SHOWN, +/-0.015
 - CLEAN PER SPEC: V049-2-015
 - DO NOT USE CARBON STEEL BRUSHES OR BRUSHES CONTAMINATED WITH CARBON STEEL ON STAINLESS OR ALUMINUM MATERIAL.
 - THE CENTER LINES OF ALL SHELLS AND END FLANGES ARE TO LIE ON THE COMMON CENTER LINE WITHIN +/-1/16
 - SPOOL FABRICATION TO BE IN ACCORDANCE WITH SPEC: V049-2-097.
 - FOR FLANGE DETAILS SEE DVG. V049-4-018 & 079.
 - THESE FLANGES EACH INCLUDE AN ANNULAR CHANNEL BETWEEN O-RINGS, MANIFOLD TO A SINGLE PUMPOUT PORT ON EACH CHAMBER, SEE DVG V049-4-
 - REGISTERED TRADEMARK, VARIAN VACUUM PRODUCTS; COMPATIBLE ALTERNATIVES ARE ACCEPTABLE.

LIGO-D961149-00-V

SYMBOL	CHARACTERISTIC	UNLESS OTHERWISE SPECIFIED TOLERANCES ARE IN INCHES	REV	DESCRIPTION	DATE	BY	CHKD	DRWN	DATE	BY	CHKD	DRWN	DATE	BY
□	FLATNESS	FRACTIONAL ± .1	0	ISSUED FOR FOR	5/4/96	MA								
○	CYLINDRICITY	ANGULAR ± .01												
//	PARALLELISM	FRACTIONAL ± .1												
⊥	PERPENDICULARITY	± .01												
∠	ANGULARITY	± .01												
⊕	TRUE POSITION	± .01												
◎	CONCENTRICITY	± .01												

DWG. NO.	DESCRIPTION	DWG. NO.	DESCRIPTION
	REFERENCE DRAWINGS		

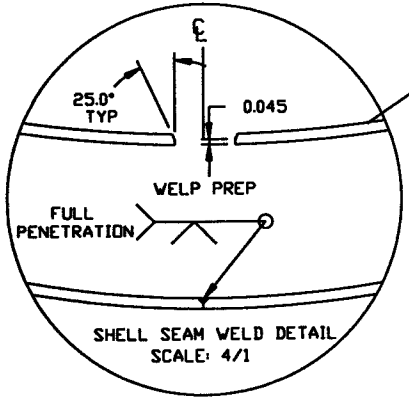
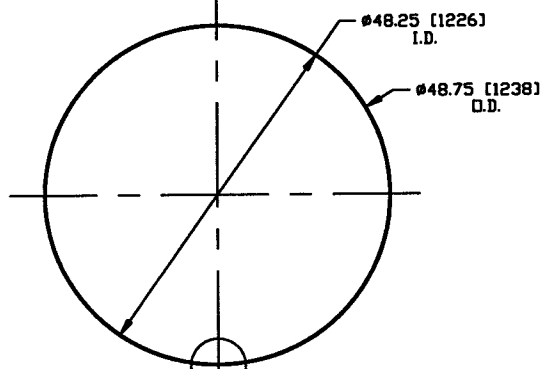
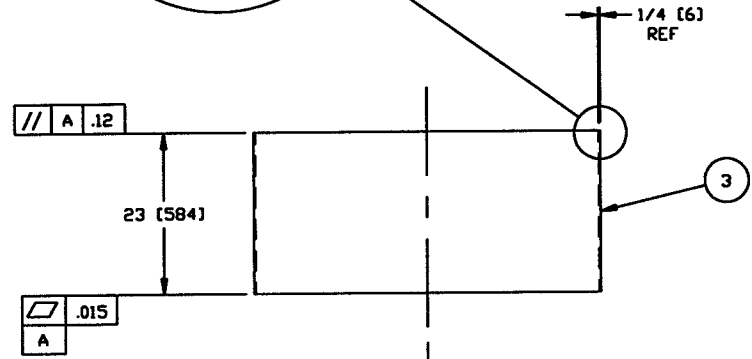
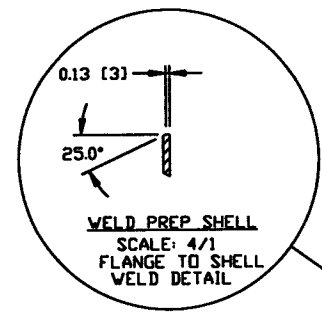
SCALE	SIZE	DWG. NO.	REV.
1-1/2" = 1"	D	V049-4-A15	0

PROCESS SYSTEMS INTERNATIONAL INC.
 20 WALKUP DR. WESTBOROUGH, MASSACHUSETTS 01581 USA

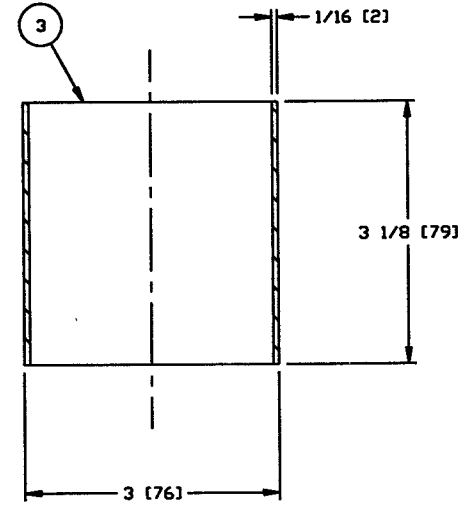
ADAPTER A-15
 48.25 ID x 60.50 ID
 LIGO VACUUM EQUIPMENT

MA 5/4/96 0145
 MA 5/4/96 0145

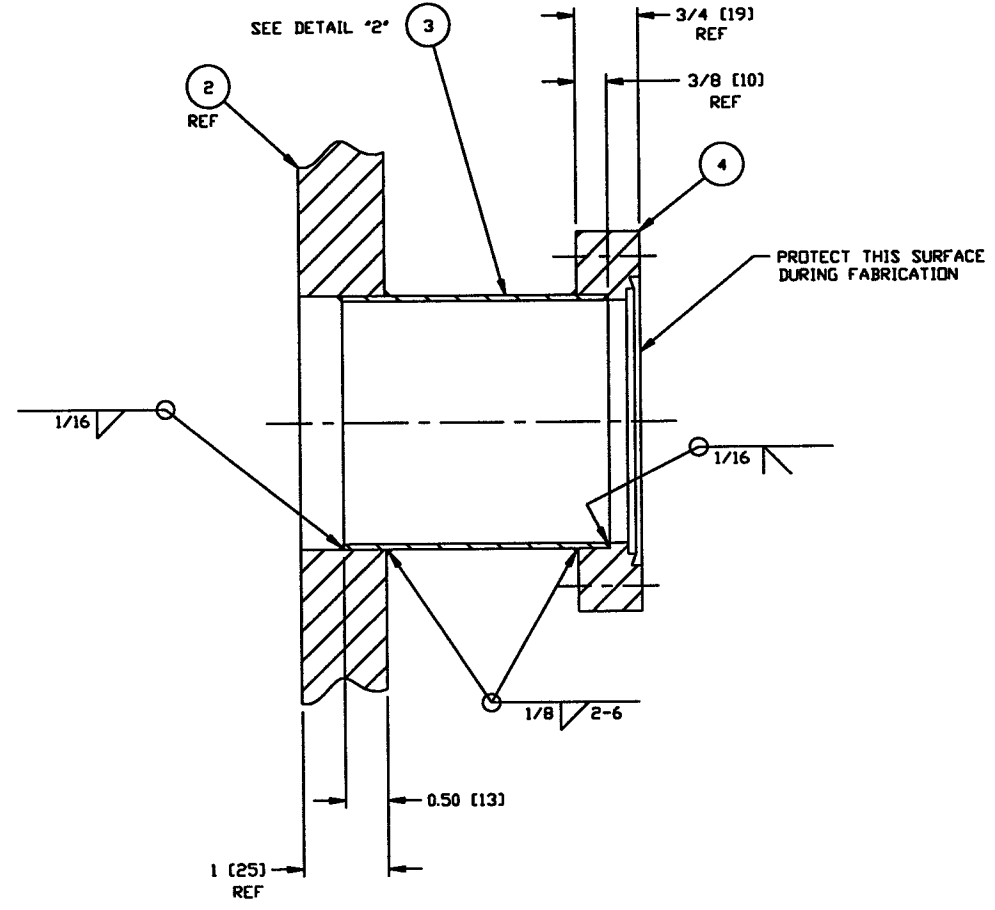
1 OF 2



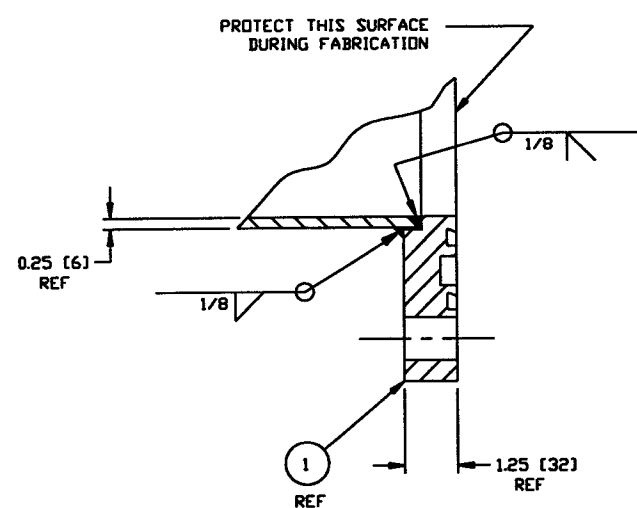
DETAIL "1"
SCALE: 1"=1'-0"
QTY: 2



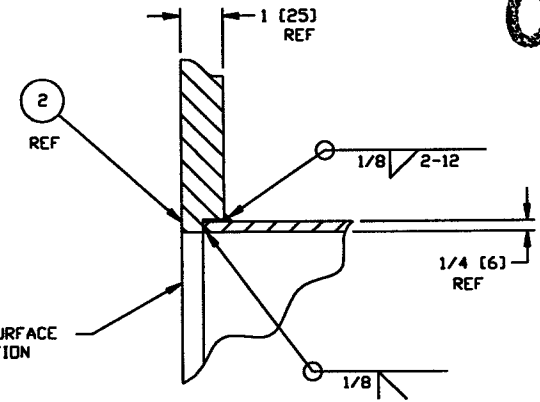
DETAIL "2"
SCALE: FULL



DETAIL "3"
SCALE: FULL



DETAIL "4"
SCALE: HALF



DETAIL "5"
SCALE: HALF

NOT FOR CONSTRUCTION

Raymond D. Latta, PE
5/6/96

Hold

LGO D961149-02-V

PROCESS SYSTEMS INTERNATIONAL INC. <small>20 WALKUP DR. WESTBOROUGH, MASSACHUSETTS 01581 USA</small>			
ADAPTER A-15 48.25"ID x 60.50"ID LIGD VACUUM EQUIPMENT			
CAD FILE V049A15/4A15S2	SIZE D	ENG. NO. V049-4-A15	REV. 0
SCALE AS NOTED	SHEET 2 OF 2		

REV. 06.1996 - 140382