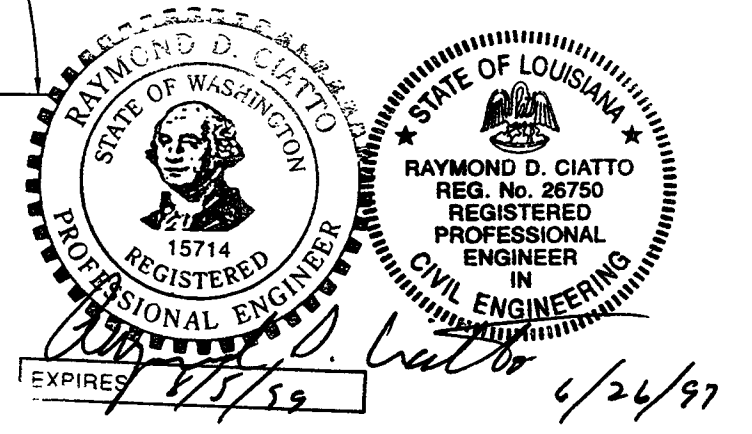
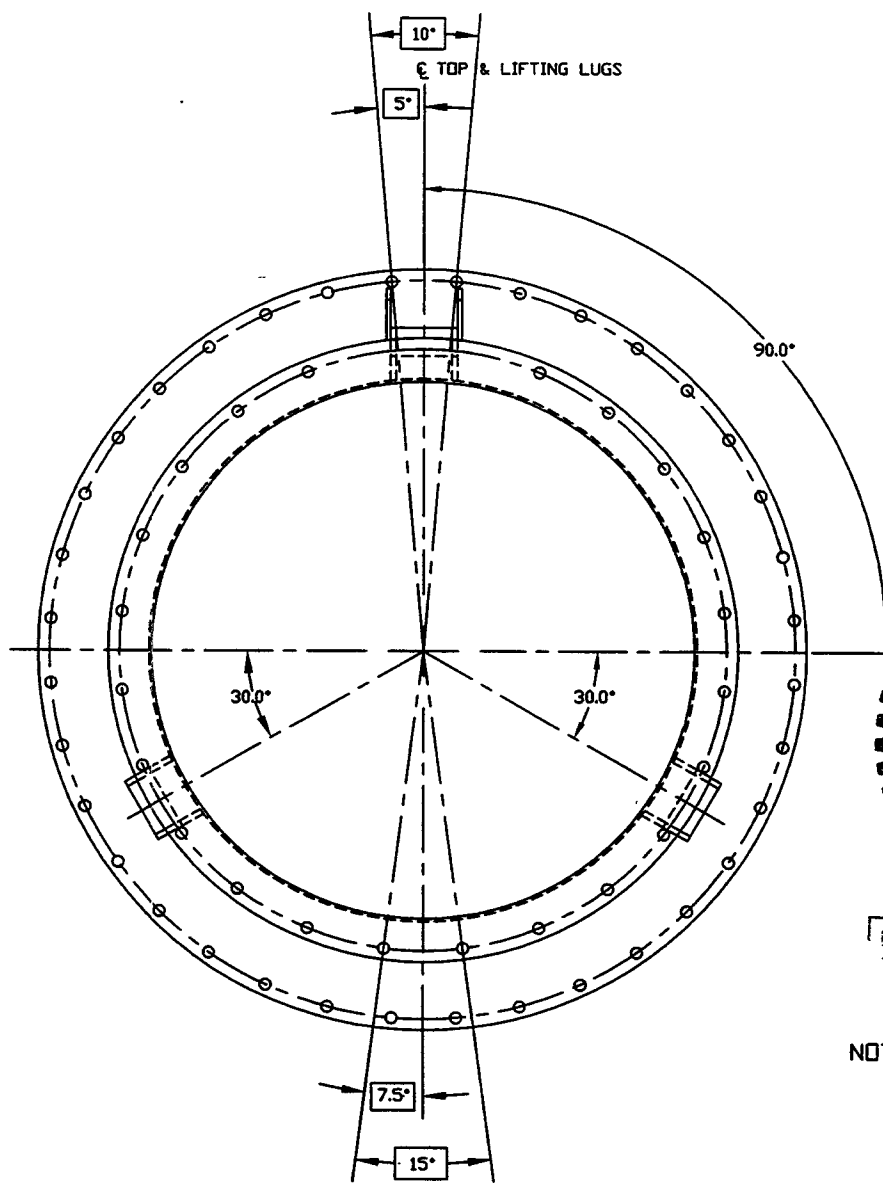
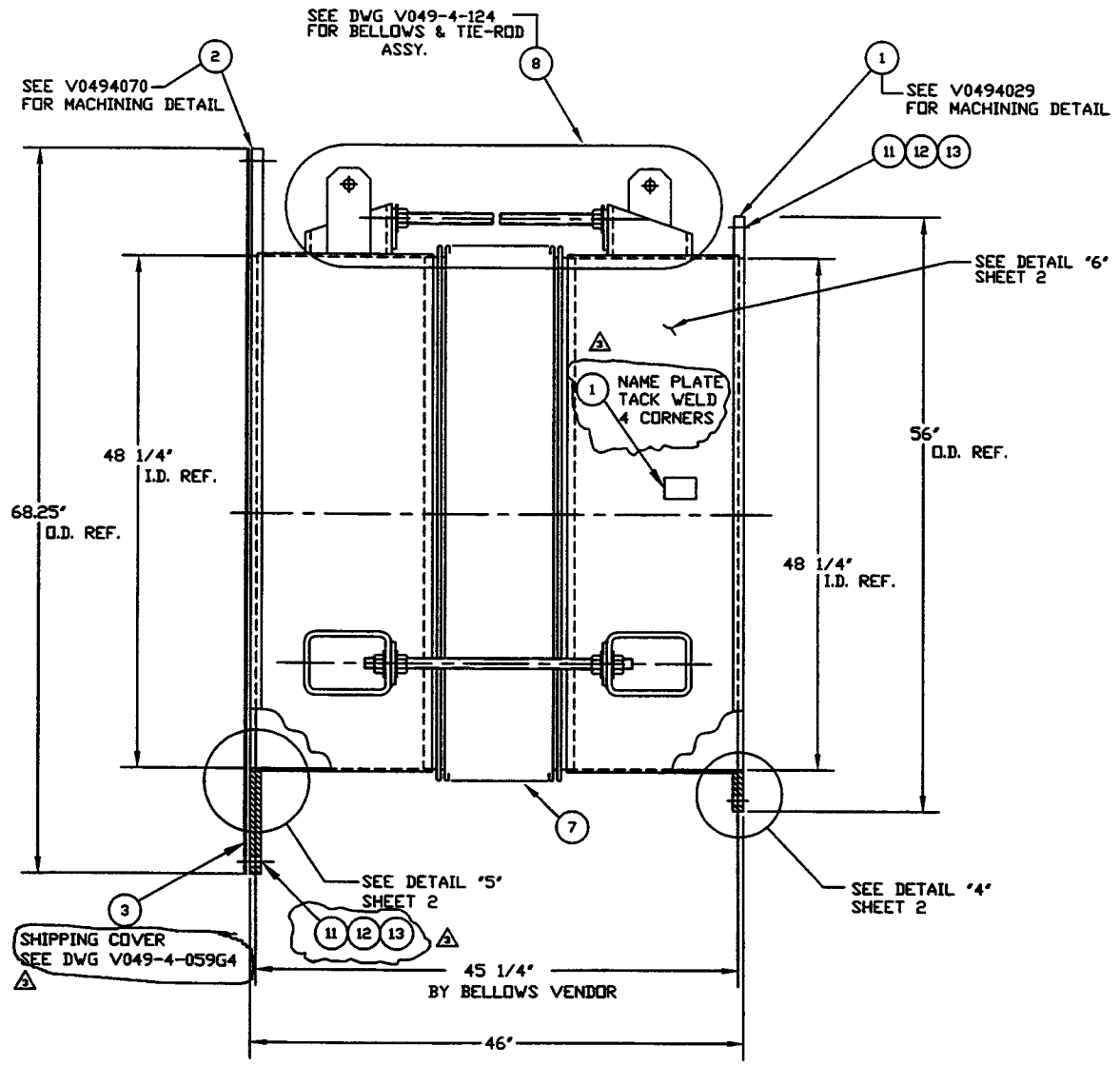


ITEM	PART NUMBER	SUFFIX	QTY	UN	DESCRIPTION
1	V0494029		1	EA	FLANGE, FLAT FACED, 48 1/4" ID x 56" O.D.
2	V0494070		1	EA	FLANGE, FLAT FACED, 48 1/4" ID x 68 1/4" O.D.
3	V0494059G4		1	EA	SHIPPING COVER ASSY
4	V049M740		1	EA	PSI NAME PLATE, 2' x 3'
5					
6					
7	V0494A6P1		1	EA	BELLOWS ASSY. (PER SPEC. V049-2-017)
8	###		3	EA	TIE-ROD ASSY. (PER V049-4-124)
9					
10					
11	202678		3	54 EA	BOLT, SA 193 B7, HEX HD 7/8-9UNC X 4" LG.
12	202679		3	54 EA	NUT, SA 194 2H, HEX 7/8-9UNC
13	202581		3	138 EA	WASHER, 1 3/4" O.D X 15/16" I.D. X 1/4" THK.

■ ELECTROLESS NICKEL PLATE  
 ### SUPPLIED BY VENDOR



- NOTES:
11. WDS NO'S. REFER TO WELD DATA SPEC. V049-2-084.
  10. PLATES PRIOR TO ROLLING MUST HAVE DIAGONAL CORNER TO CORNER DIMENSIONS WITHIN 1/16" OF EACH OTHER.
  9. EACH FINISHED SHELL IS TO BE MARKED WITH A SEQUENTIAL PSI SERIAL NUMBER. THE NUMBER IS TO BE MADE FROM THE DRAWING PLUS THE SEQUENTIAL NUMBER. V0494A6-01, 02 ETC.
  8. TIGHTEN TIE-ROD NUTS WITH BELLOWS IN 'FREE' POSITION TO 100 FT-LB PRIOR TO LEAK TEST.
  7. LEAK TEST & METHOD PER PSI SPEC: V049-2-014
  6. CERTIFIED MANUFACTURER'S MATERIAL TEST REPORTS REQUIRED, AS NOTED.
  5. BOLT HOLES OF ALL FLANGES TO STRADDLE VERTICAL CENTERLINE +/- .015.
  4. CLEAN PER SPEC: V049-2-015
  3. DO NOT USE CARBON STEEL BRUSHES OR BRUSHES CONTAMINATED WITH CARBON STEEL ON STAINLESS OR ALUMINUM MATERIAL.
  2. ADAPTER FABRICATION TO BE IN ACCORDANCE WITH SPEC. V049-2-097.
  1. FOR FLANGE DETAILS SEE DWG. V049-4-029 & 070.

TAG NO'S: WA-6A, WA-6B

APPROX. WEIGHT: 1204#

DWG. NO.	DESCRIPTION	DWG. NO.	DESCRIPTION

REV	DESCRIPTION	DATE	BY	CHKD	DRWN	DATE	DESD
3	REISSUED FOR FAB/SHIPPING AS NOTED	5/14/97	0485				
2	DESIGN UPDATE/ISSUED FOR FABRICATION	11/22/96	0180				
1	DESIGN UPDATE / FABRICATION (BELLOWS ASSY. DNL'D)	9/11/96	0191				
0	ISSUED FOR FDR	4/27/96	0145				
P1	PRELIMINARY	4/17/96					

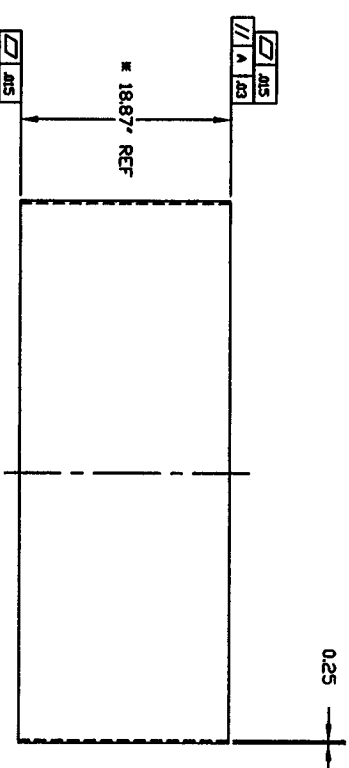
PROCESS SYSTEMS INTERNATIONAL, INC.  
 30 WALKUP DR. WESTBOROUGH, MASSACHUSETTS 01581 USA

ADAPTER A-6  
 48.25" ID x 60.50" ID  
 LIGO VACUUM EQUIPMENT

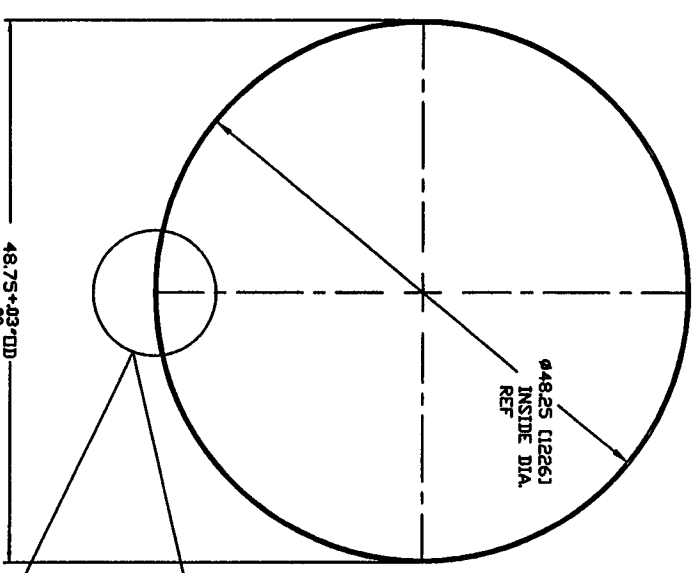
CAD FILE: 44651  
 DWG. NO.: V049-4-A6  
 REV: 3

SCALE: 1-1/2"=1'-0"  
 SHEET: 1 OF 2

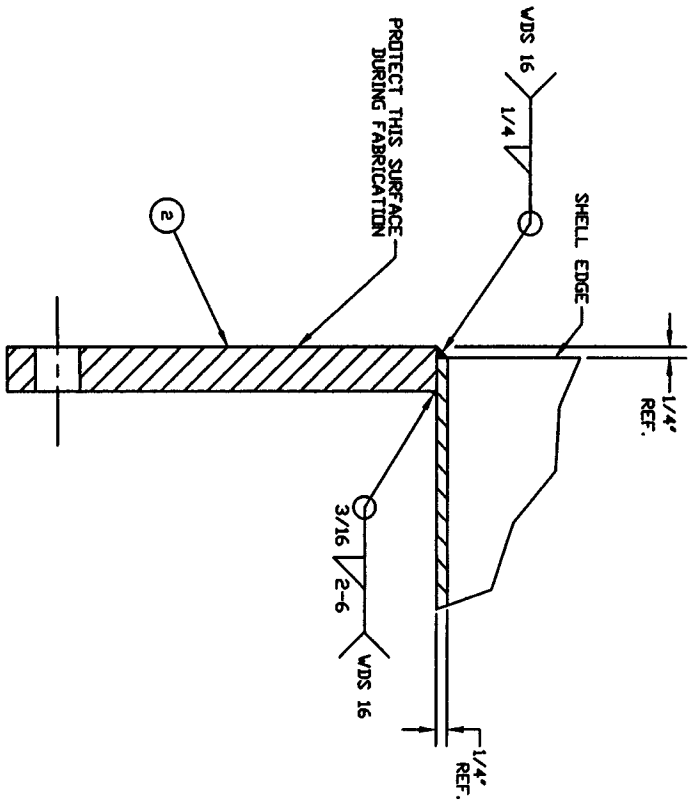
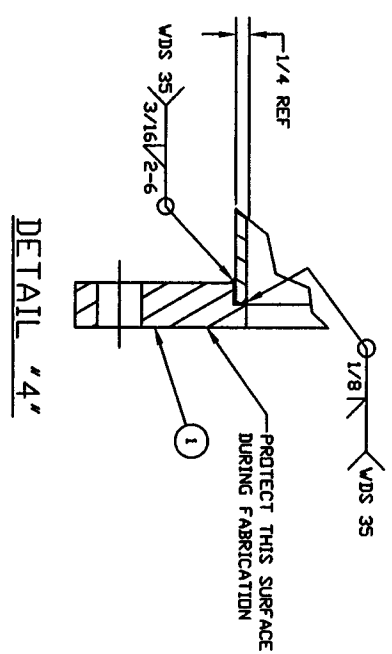
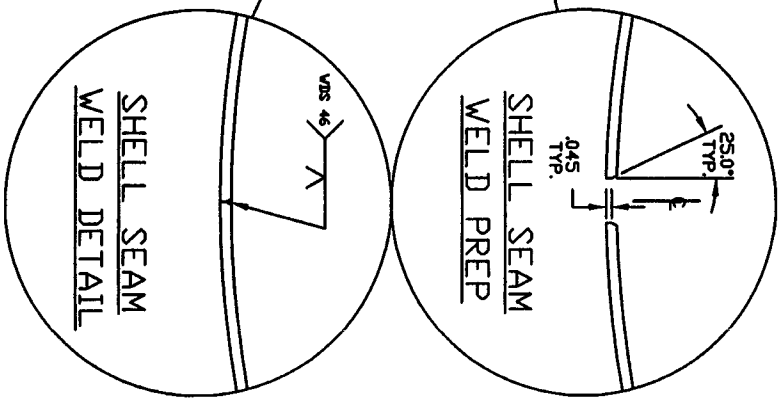
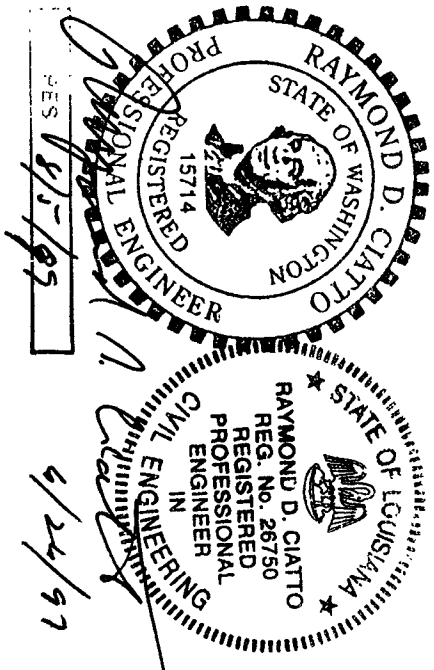
LIGO-D961143-03-V



\* NOTE: FINAL FINISHED LENGTH TO BE DETERMINED BY BELLOWS VENDOR



DETAIL "6"  
 SCALE: 1 1/2"=1'-0"  
 QTY. 2  
 MAKE FROM V049N163-1



**PROCESS SYSTEMS INTERNATIONAL, INC.**  
 20 WINDY DR. WESTBOROUGH, MASSACHUSETTS 01581 USA  
 ADAPTER A-6  
 48.25ID" X 60.50"TD  
 LIGHT VACUUM EQUIPMENT  
 QTY. 2  
 V049-4-A6  
 2 OF 2