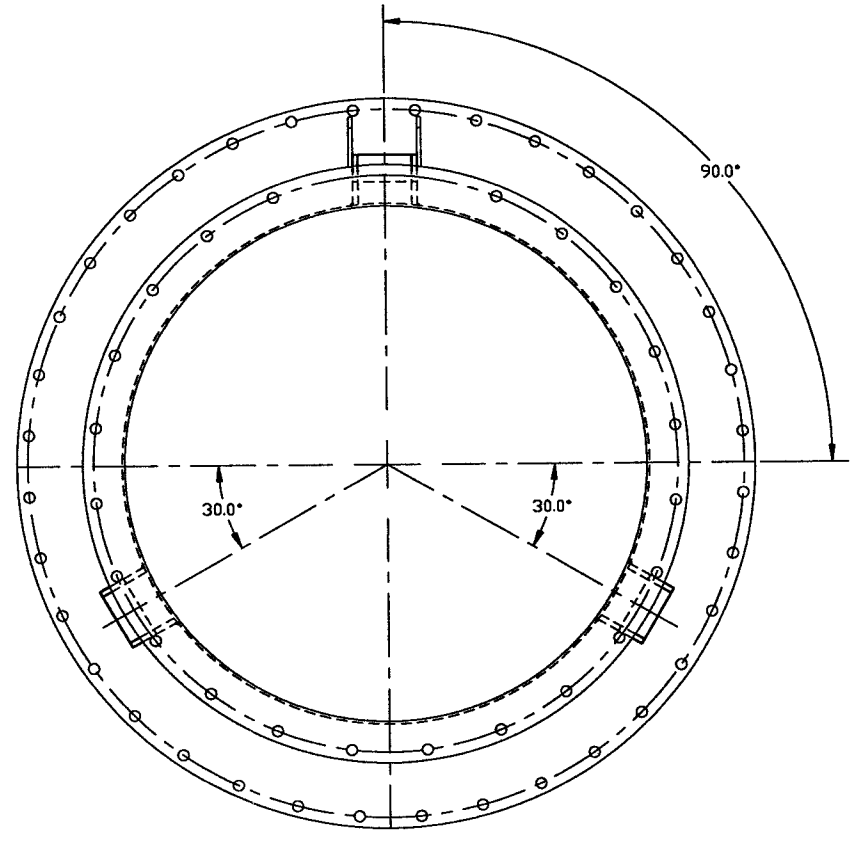
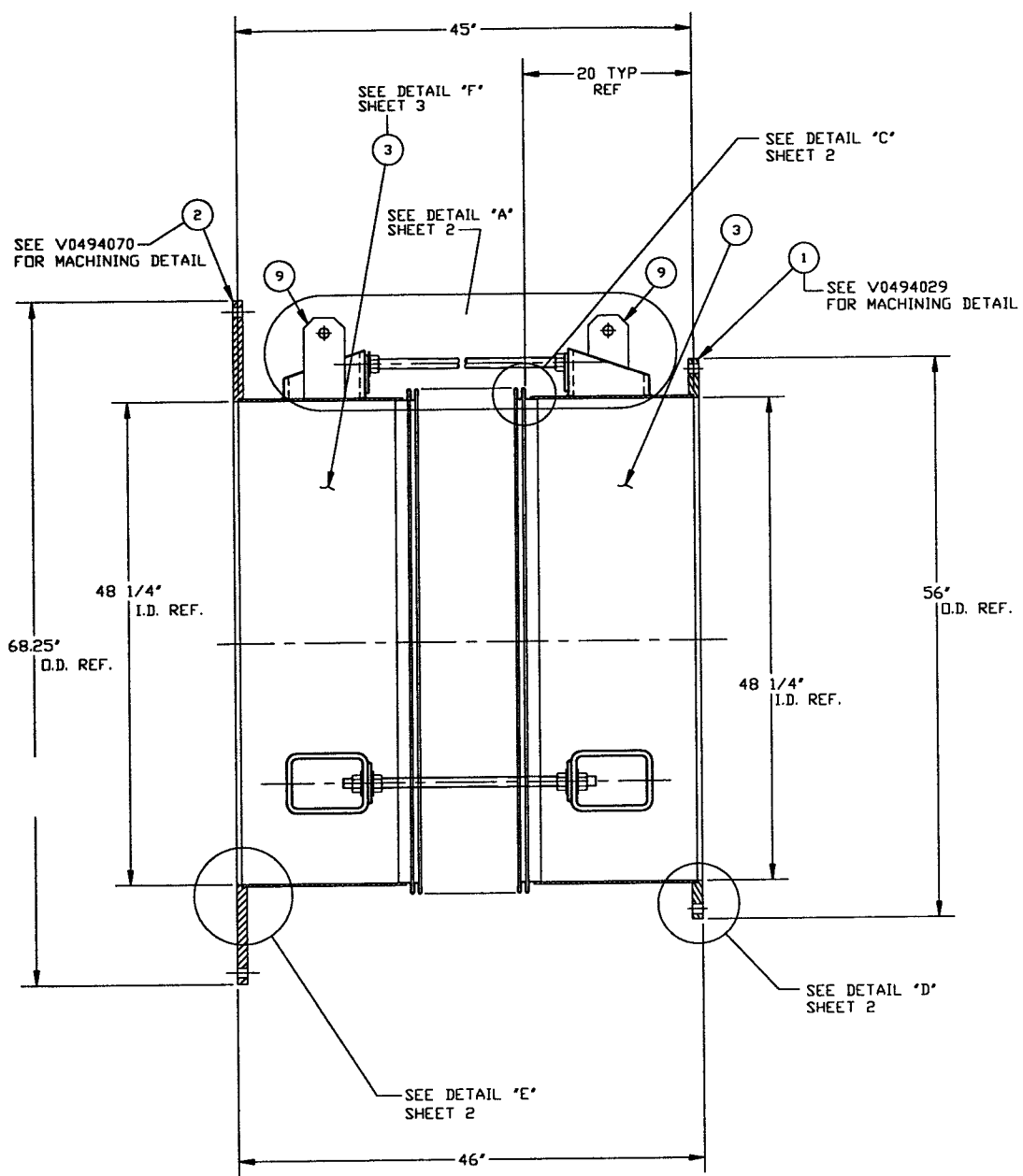


ITEM	PART NUMBER	SUFFIX	QTY	UM	DESCRIPTION
1	V0494029		1	EA	FLANGE, FLAT FACED, 48 1/4" ID x 56" O.D.
2	V0494070		1	EA	FLANGE, FLAT FACED, 48 1/4" ID x 68 1/4" O.D.
3	XX		XX	SF	PLATE, 304L SST, 1/4" THK
4	XX		3	EA	ROD, THREADED, 1"-8 UNC-2A X 1'-0" LG ELEC NICK PLATE
5	XX		12	EA	NUT, HEX, A563 GR A, 1"-8 UNC-2B
6	XX		2.5	FT	TUBING, SQUARE 304 SST, 8" X 6" 1/2" WALL
7	XX		1	EA	BELLOWS
8	XX		12	SF	PLATE, 304 SST, 4" X 3 3/4" X 3/8" THK
9	XX		12	EA	WASHER, 1" STEEL ELECTROLESS NICKLE PLATED
10	XX		XX	SF	PLATE, (LIFTING LUG) A36 8" X 4" X 3/8" THK



**NOT FOR CONSTRUCTION**

*Raymond D. Watts, PE*  
5/6/96

- NOTES:
- LEAK TEST & METHOD PER PSI SPEC. V049-2-014
  - CERTIFIED MANUFACTURER'S MATERIAL TEST REPORTS REQUIRED.
  - BOLT HOLES TO STRADDLE NATURAL CENTERLINES AS SHOWN, +/- .015
  - CLEAN PER SPEC. V049-2-015
  - DO NOT USE CARBON STEEL BRUSHES OR BRUSHES CONTAMINATED WITH CARBON STEEL ON STAINLESS OR ALUMINUM MATERIAL.
  - ADAPTER FABRICATION TO BE IN ACCORDANCE WITH SPEC. V049-2-097.
  - FOR FLANGE DETAILS SEE DWG. V049-4-029 & 070.

LGO 0961143-00-V

UNLESS OTHERWISE SPECIFIED DIMENSIONS ARE IN INCHES TOLERANCES: FRACTIONAL ± .1 ANGULAR/CHAMF 45°-90° BEND ±.2 TWO PLACE DECIMAL ± .01 THREE PLACE DECIMAL ± .005 FINISHED SURFACE RMS BREAK CORNERS IN OUT. REMOVE ALL BURRS		DO NOT SCALE THIS DRAWING		USED ON		NEXT ASSY:		UNLESS OTHERWISE SPECIFIED DIMENSIONS ARE IN INCHES TOLERANCES: FRACTIONAL ± .1 ANGULAR/CHAMF 45°-90° BEND ±.2 TWO PLACE DECIMAL ± .01 THREE PLACE DECIMAL ± .005 FINISHED SURFACE RMS BREAK CORNERS IN OUT. REMOVE ALL BURRS		DO NOT SCALE THIS DRAWING		USED ON		NEXT ASSY:	
0 ISSUED FOR FDR		P1 PRELIMINARY		REV		DESCRIPTION		CHKD		DRWN		DATE		DECD	
D. WATTS		DA		4/27/96		0145		PV		4/17/96					
SCALE 1-1/2"=1'-0"		SHEET 1 OF 3		CAD FILE 446SI		SIZE D		DWG. NO. V049-4-A6		REV. 0					

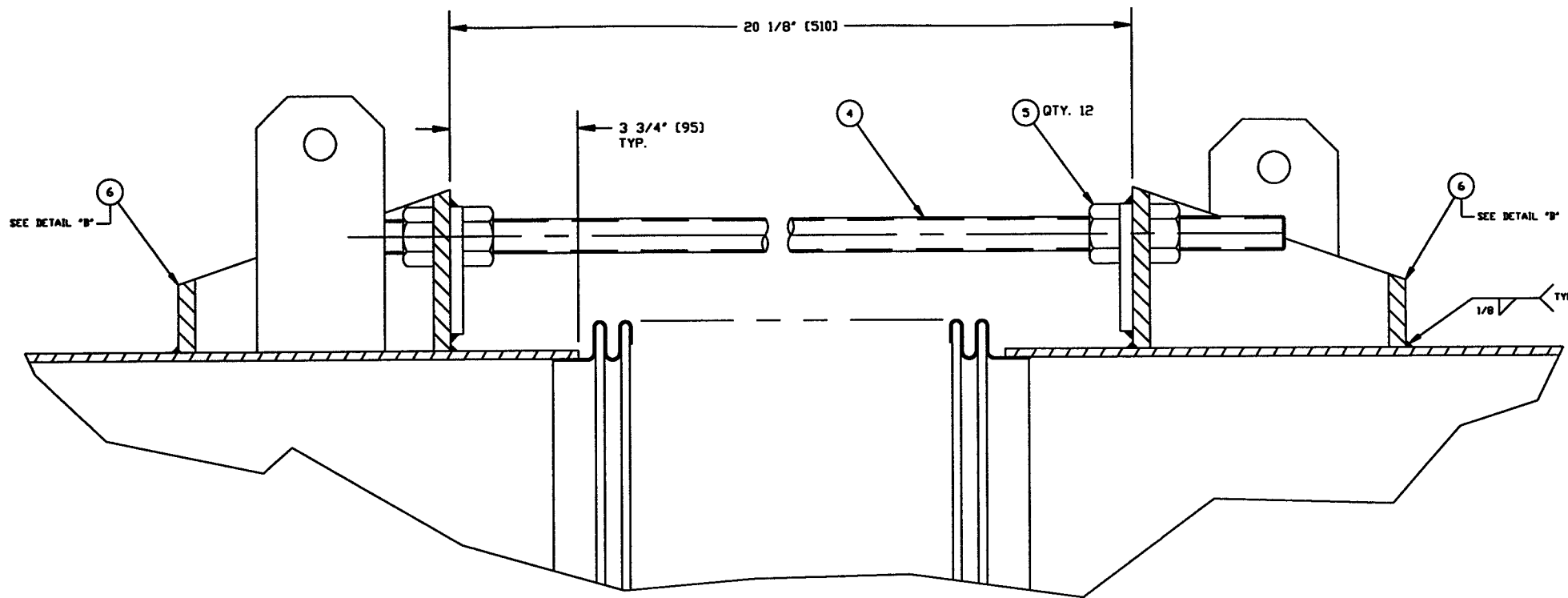
**PROCESS SYSTEMS INTERNATIONAL INC.**  
20 WALKUP DR. WESTBOROUGH, MASSACHUSETTS 01581 USA

**ADAPTER A-6**  
48.25" ID x 60.50" ID  
LIGO VACUUM EQUIPMENT

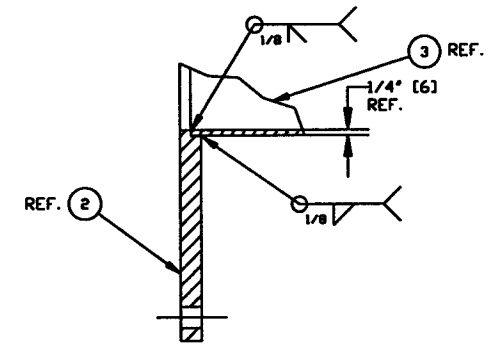
SCALE 1-1/2"=1'-0" SHEET 1 OF 3

NOT FOR CONSTRUCTION

REV. 0

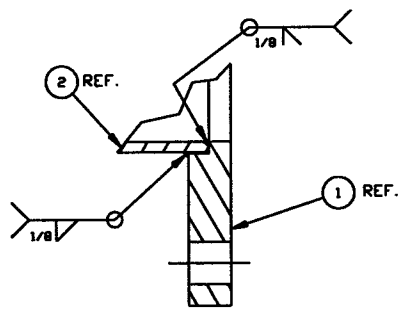


**DETAIL "B"**  
EXPANSION JOINT & TIE ROD ASSY.  
QTY. (4)

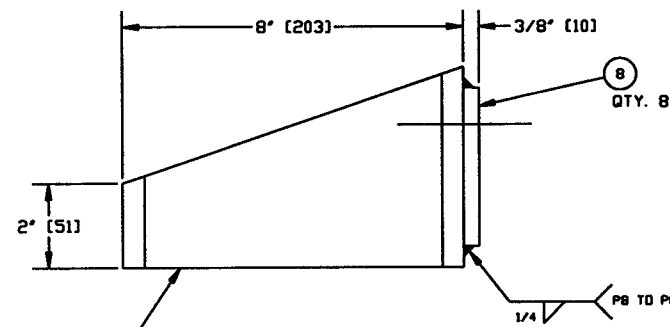
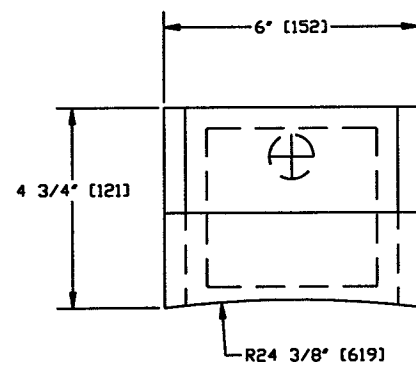


**DETAIL "E"**  
SCALE: 3"=1'-0"

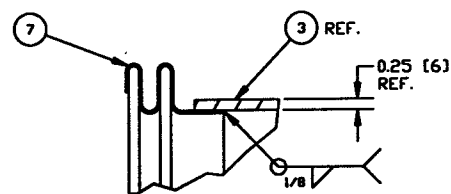
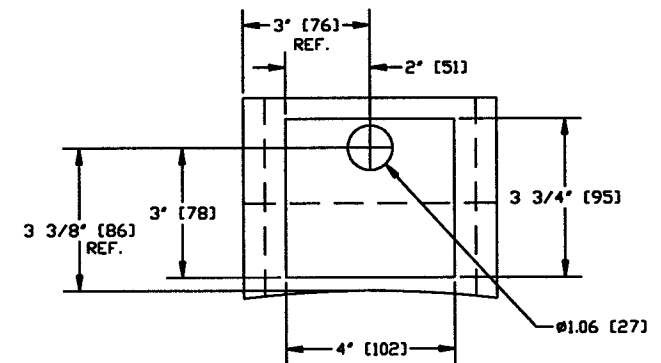
**NOT FOR  
CONSTRUCTION**



**DETAIL "D"**  
SCALE: HALF



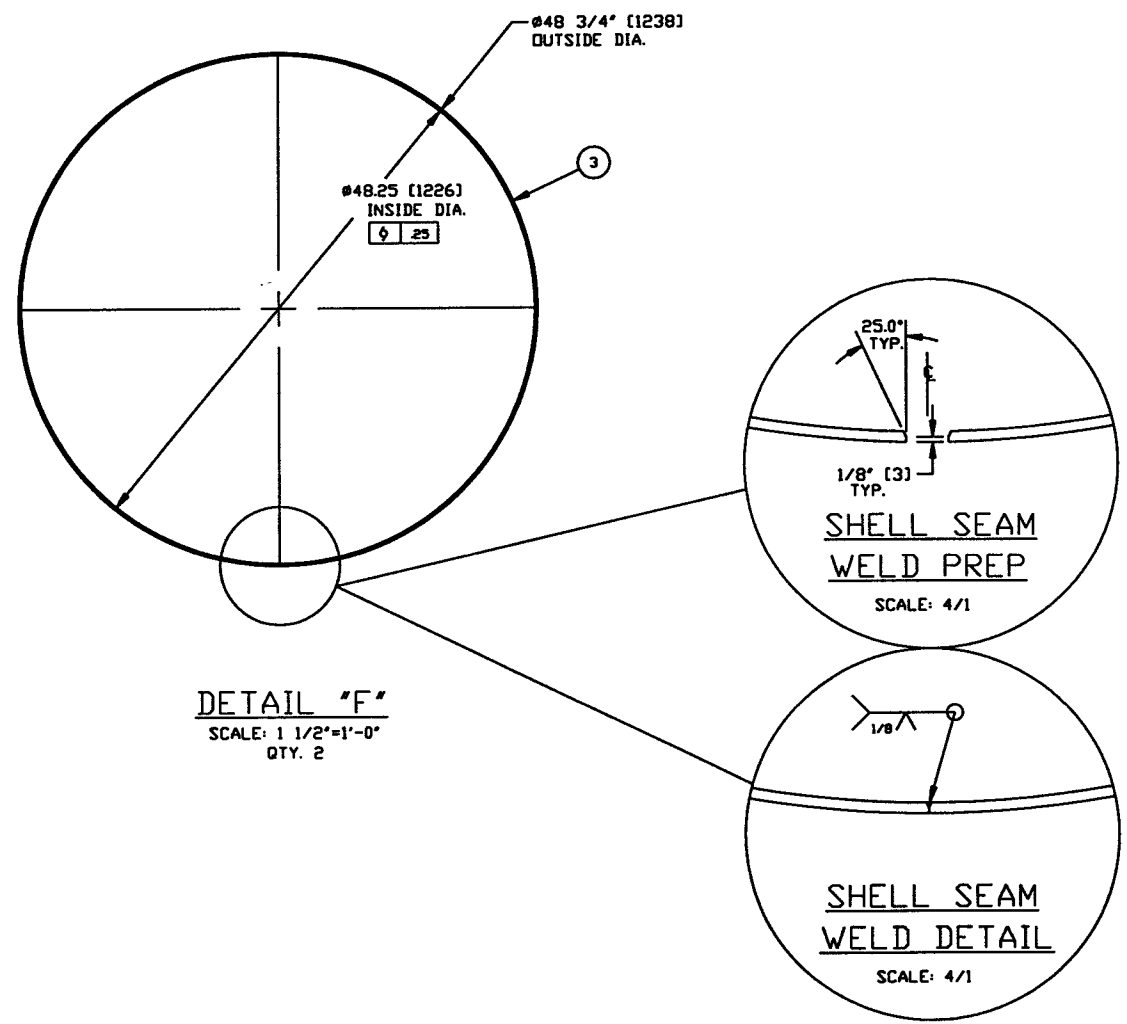
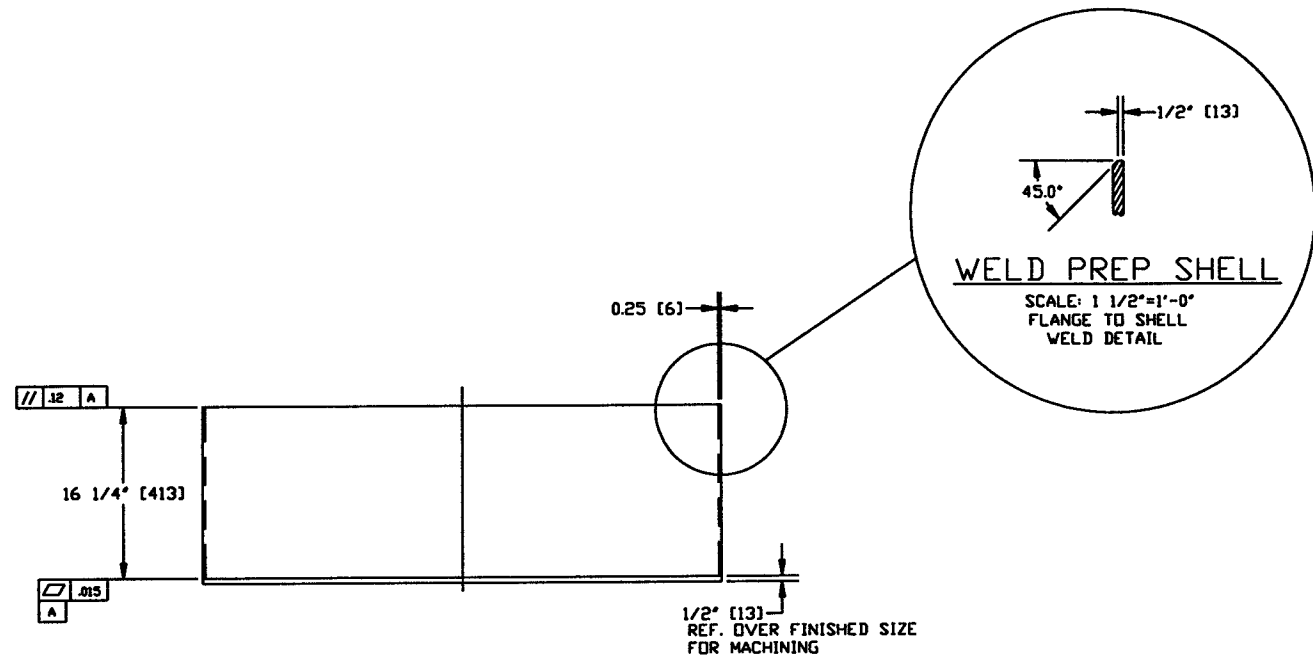
**DETAIL "B"**  
SCALE: HALF



**DETAIL "C"**  
SCALE: HALF

*Hold*  
*Raymond D. Ciatto, PE*  
*5/6/96 LIG0 0961143 00V*

<b>PROCESS SYSTEMS INTERNATIONAL INC.</b> <small>20 WILKUP DR. WESTBOROUGH, MASSACHUSETTS 01581 USA</small>			
<b>ADAPTER A-6</b> <b>48.25 ID" x 60.50" ID</b> <b>LIGD VACUUM EQUIPMENT</b>			
CAD FILE	SIZE	INCL. NO.	REV.
44652	D	V049-4-A6	0
SCALE	AS NOTED	SHEET	2 OF 3



**DETAIL "F"**  
SCALE: 1 1/2"=1'-0"  
QTY. 2

**NOT FOR CONSTRUCTION**

*Raymond O. Ciatto, PE*  
5/6/96

*Hold*

LIGD 0961143-00-V

<b>PROCESS SYSTEMS INTERNATIONAL INC.</b> <small>20 WALSH DR. WESTBOROUGH, MASSACHUSETTS 01581 USA</small>			
<b>ADAPTER A-6</b> 48.25ID" x 60.50"ID LIGD VACUUM EQUIPMENT			
CAD FILE 44653	SIZE D	DWG. NO. V049-4-A6	REV. D
SCALE AS NOTED	SHEET 3 OF 3		

MAY 06, 1996 - 0750033