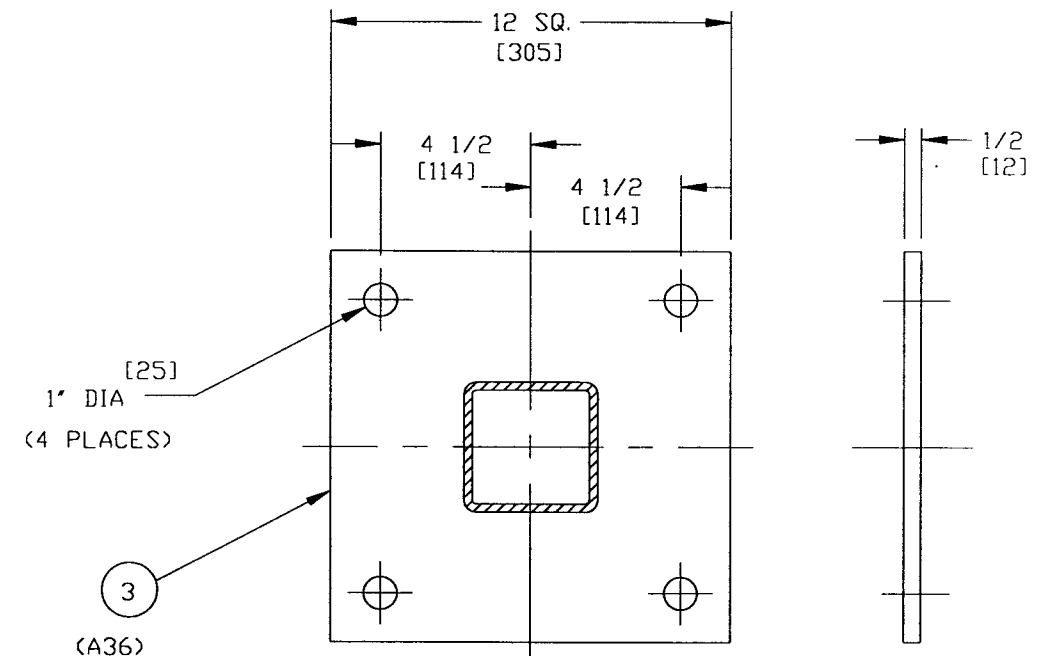
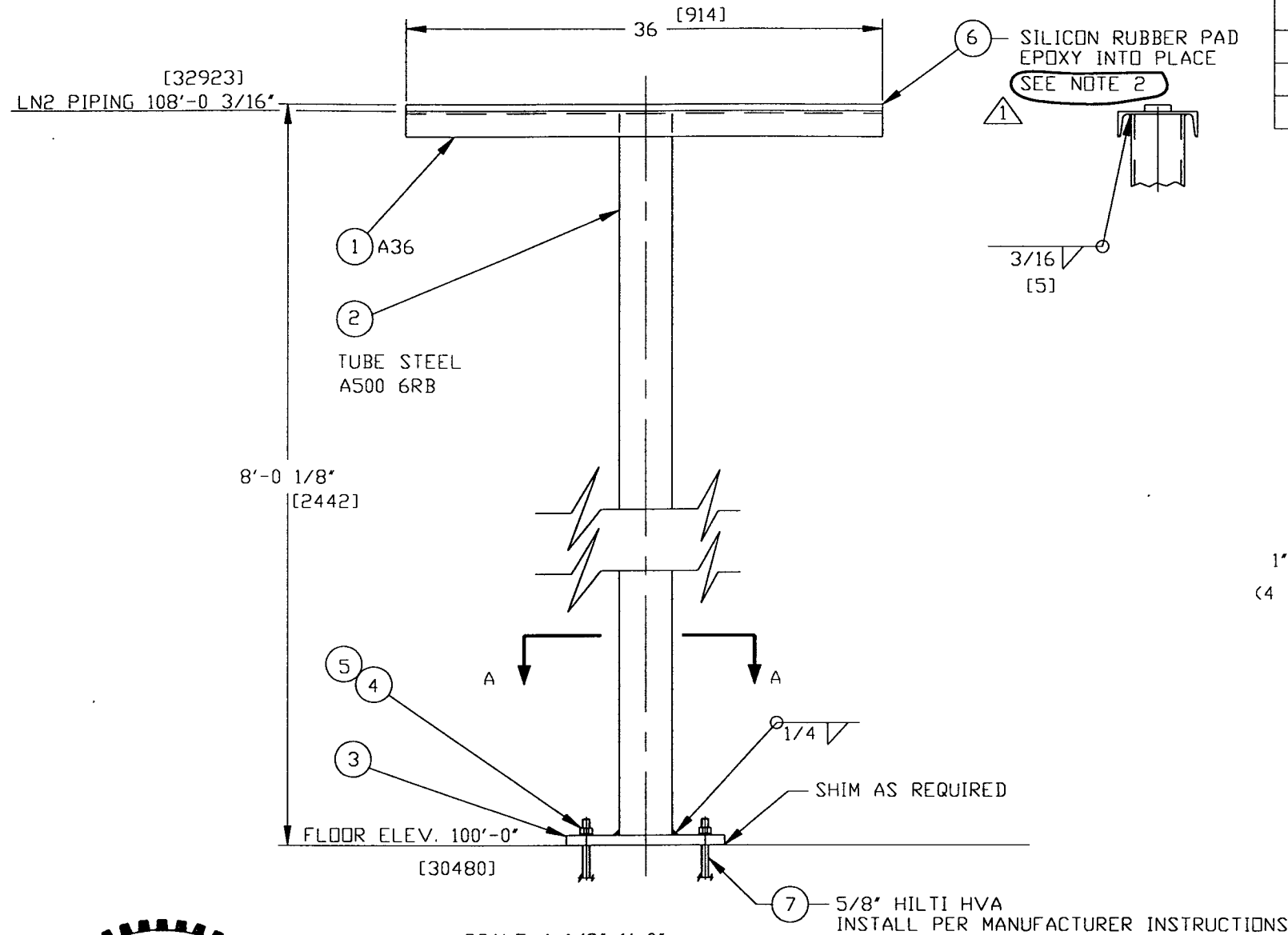
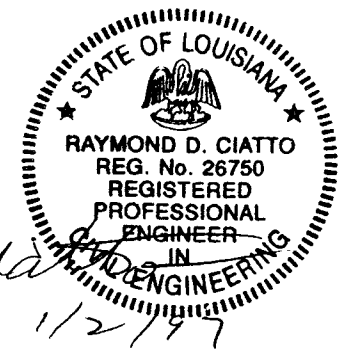
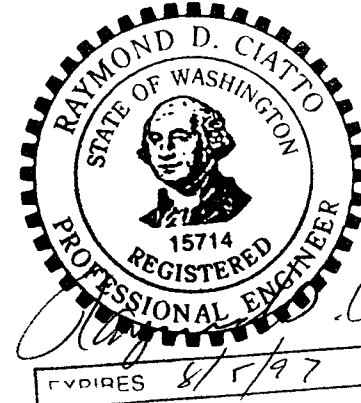


ITEM	PART NO.	SUFFIX	QTY	UM	DESCRIPTION
1			1	EA	CHANNEL, C6x8.23#/FT.x3 FT.
2			2	EA	TUBE, SQ, 1/4"x4"x20 FT. LG. A500 GRB
3			4	EA	PLATE, 1/2"x12"x12"
4			4	EA	BOLT, HILTI, 5/8"x3" LG C.S. NICKEL PLT.
5			4	EA	WASHER, FLAT, 3/4" ID
6			3	FT	RUBBER, SILICON .5"x2"x36"
7			4	EA	ANCHOR HILTI HVA 5/8"x5" LG



NOTE:
 1.) PAINT PER PSI SPEC. V049-2-139.
 2.) FOR TEE POSTS LOCATED OUTSIDE OF BUILDINGS, OMIT RUBBER PAD AND PROVIDE INSULATION PROTECTION SADDLES PER ATTACHMENT E2 OF SPEC. V049-2-163.



REVISED 8/5/97 11/2/97

096 1133-01-V

PROPRIETARY AND CONFIDENTIAL
 THIS DOCUMENT CONTAINS PROPRIETARY INFORMATION BELONGING TO PROCESS SYSTEMS INTERNATIONAL, INC. OR ITS COMPANIES AND SHALL BE FOR THE PURPOSE OF SUPPLYING IT SHALL NOT BE REPRODUCED OR OTHERWISE USED. SHALL SUCH INFORMATION BE FURNISHED IN WHOLE OR IN PART TO OTHERS EXCEPT IN ACCORDANCE WITH THE TERMS OF ANY AGREEMENT UNDER WHICH IT WAS SUPPLIED OR WITH THE PRIOR WRITTEN CONSENT OF PROCESS SYSTEMS INTERNATIONAL, INC. AND SHALL BE RETURNED UPON REQUEST.

DWG. NO.	DESCRIPTION	USED ON	REV.	DESCRIPTION	CHKD	DRAWN	DATE	DEO
			1	ISSUED FOR RELEASE / FOR UPDATE	D.W. RDC	REC	12/27/96	0360
			0	ISSUED FOR FDR/BIDS	D.W. RDC	REC	4/29/96	0150

PROCESS SYSTEMS INTERNATIONAL INC. 20 WALKUP DR. WESTBOROUGH, MASSACHUSETTS 01581 USA			
PS-1 'T'-POST SUPPORT LN2 PIPING LIGD VACUUM EQUIPMENT			
CAD FILE V0494072	SIZE C	DWG. NO. V049-4-072	REV. 1
SCALE AS NOTED	SHEET 1 OF 1		

Dec 27, 1996 - 10:36:10