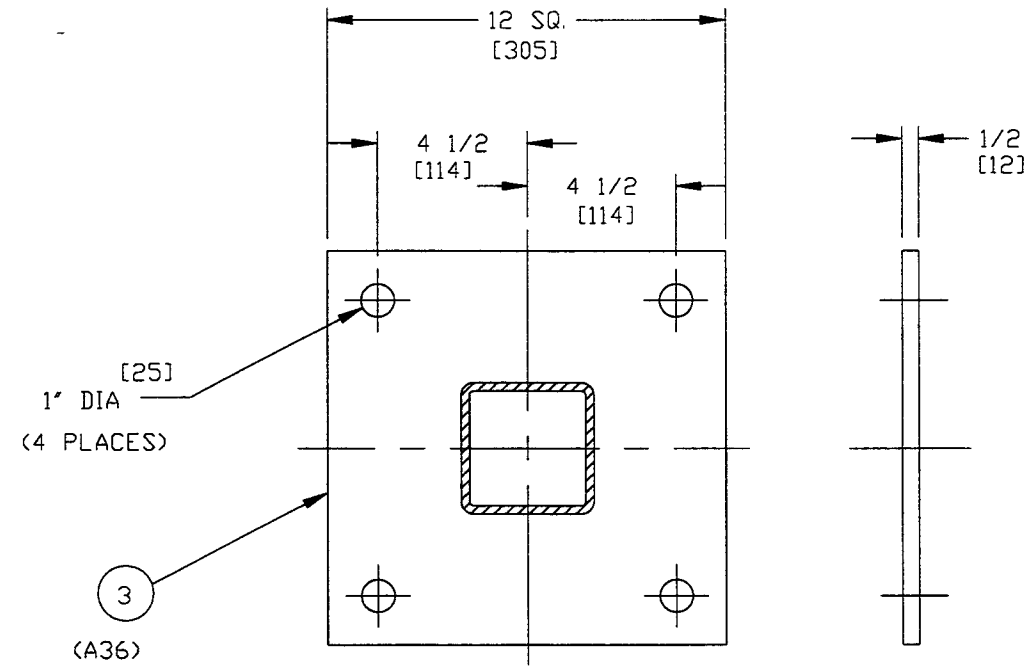
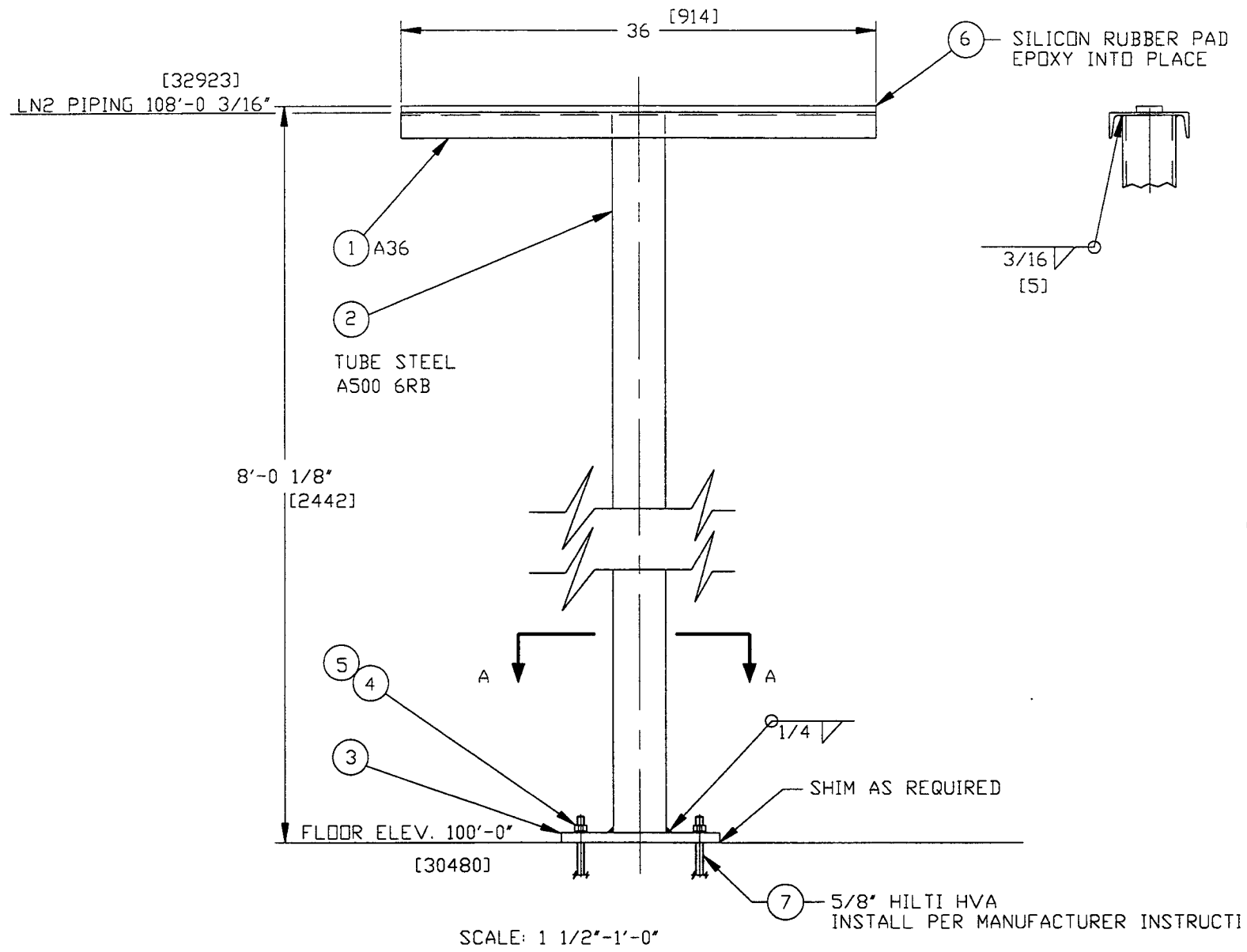


ITEM	PART NO.	SUFFIX	QTY	UM	DESCRIPTION
1			1	EA	CHANNEL, C6x8.23#/FT x3 FT.
2			2	EA	TUBE, SQ, 1/4"x4"x20 FT. LG.
3			4	EA	PLATE, 1/2"x12"x12"
4			4	EA	BOLT, HILTI, 5/8"x3" LG. CS NICKEL PLT
5			4	EA	WASHER, FLAT, 3/4" ID
6			3	FT	RUBBER, SILICON .5"x2"x36"
7			4	EA	ANCHOR HILTI HVA 5/8"x5" LG.



NOTE:
1.) PAINT PER PSI SPEC. V049-2-077.

NOT FOR CONSTRUCTION
Raymond S. Ciatto, P.E.
4/6/96

PROPRIETARY AND CONFIDENTIAL THIS DOCUMENT CONTAINS PROPRIETARY INFORMATION BELONGING TO PROCESS SYSTEMS INTERNATIONAL, INC. OR ITS AFFILIATED COMPANIES AND SHALL BE USED ONLY FOR THE PURPOSE FOR WHICH IT WAS SUPPLIED. IT SHALL NOT BE COPIED, REPRODUCED OR OTHERWISE USED, NOR SHALL SUCH INFORMATION BE FURNISHED IN WHOLE OR IN PART TO OTHERS EXCEPT IN ACCORDANCE WITH THE TERMS OF ANY AGREEMENT UNDER WHICH IT WAS SUPPLIED OR WITH THE PRIOR WRITTEN CONSENT OF PROCESS SYSTEMS INTERNATIONAL, INC. AND SHALL BE RETURNED UPON REQUEST.		UNLESS OTHERWISE SPECIFIED DIMENSIONS ARE IN INCHES TOLERANCES: FRACTIONAL ± 1/16 ANGULAR/ARCH: 30°-30° BEND ± 2° TWO PLACE DECIMAL ± .010 THREE PLACE DECIMAL ± .005 FINISHED SURFACE RMS 6.3 BREAK CORNERS: IN-.005 OUT-.005 REMOVE ALL BURRS		DO NOT SCALE THIS DWG. USED ON: _____ NEXT ASS'Y: _____		0 ISSUED FOR FDR REV. _____ DESCRIPTION _____ CHKD _____ DRAWN _____ DATE _____ DEC _____		PROCESS SYSTEMS INTERNATIONAL, INC. 20 WALKUP DR. WESTBOROUGH, MASSACHUSETTS 01581 USA PS-1 'T'-POST SUPPORT LN2 PIPING LIGO VACUUM EQUIPMENT CAD FILE: V0494072 SIZE: C DWG. NO: V049-4-072 REV: 0 SCALE: AS NOTED SHEET: 1 OF 1	
--	--	--	--	---	--	---	--	--	--