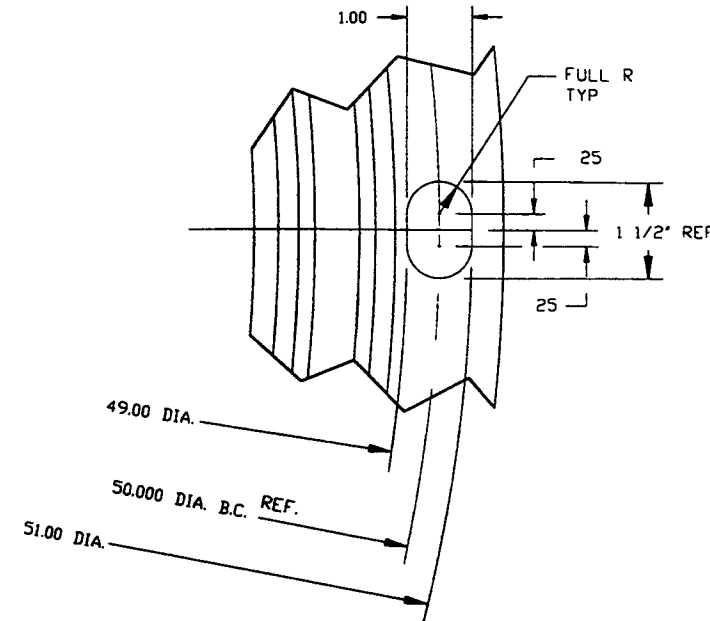
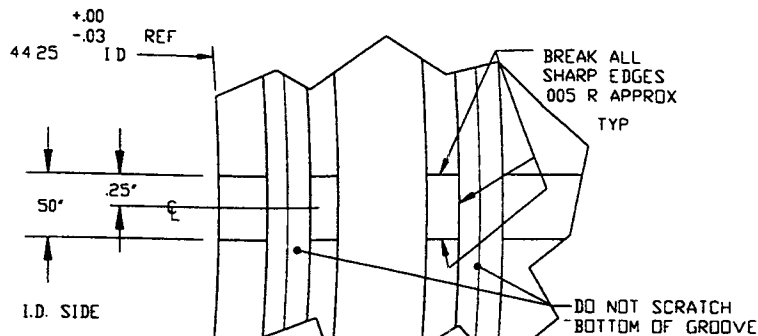
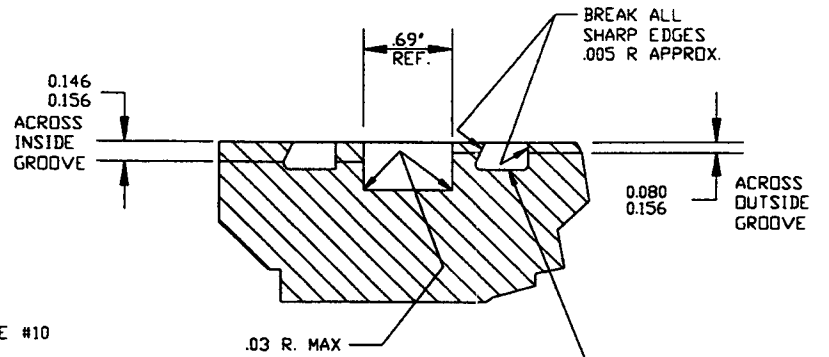


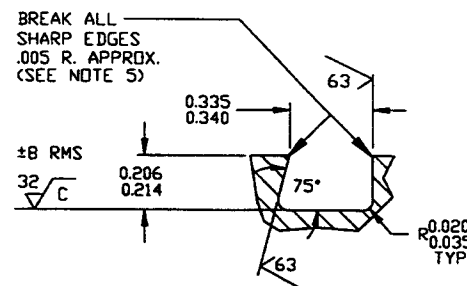
SECTION A - A



SLOT DETAIL



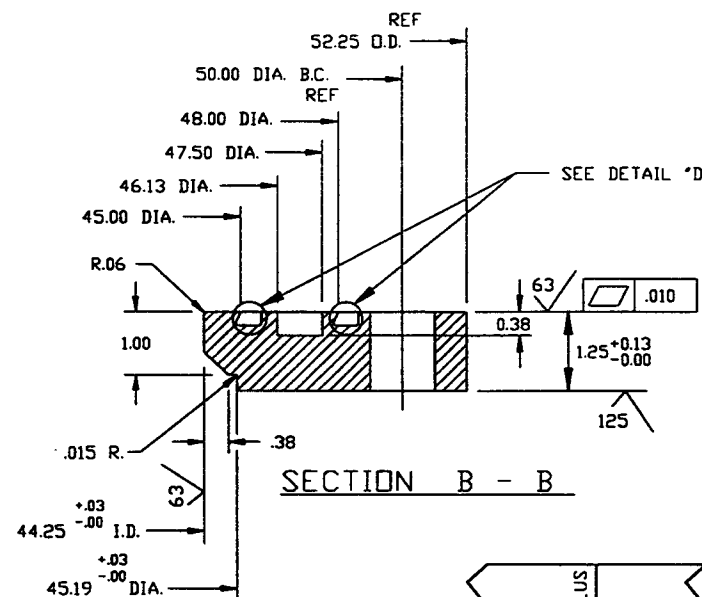
DETAIL C



DETAIL D
2 PLACES

NOTE:

- 2: ALL MATERIAL TO BE 304L STAINLESS STEEL
- 3: FLANGES MUST BE PACKAGED, HANDLED, AND SHIPPED IN SUCH A MANNER AS TO MAINTAIN SPECIFIED SURFACE FINISHES AND FLATNESS TOLERANCES.
- 4: MACHINE TOOL LAY TO BE CONCENTRIC ON ALL SURFACES THAT REQUIRE A 32 RMS FINISH
- 5: NO ABRASIVE STONES, CLOTHS OR GRINDING WHEELS MAY BE USED.
- 6: NO OIL BASED OR HYDROCARBON BASED CUTTING FLUIDS TO BE USED.
- 7: NO CARBON STEEL OR OTHER SOURCE OF IRON CONTAMINATION ARE TO COME IN CONTACT WITH FLANGES DURING MANUFACTURING OR HANDLING.
- 8: FLANGE FINAL FACE CUTS AND O-RING GROOVES MUST BE MACHINED DURING THE SAME SETUP.
- 9: STEAM CLEAN & WRAP IN POLYETHYLENE TO PREVENT CONTAMINATION DURING SHIPPING.



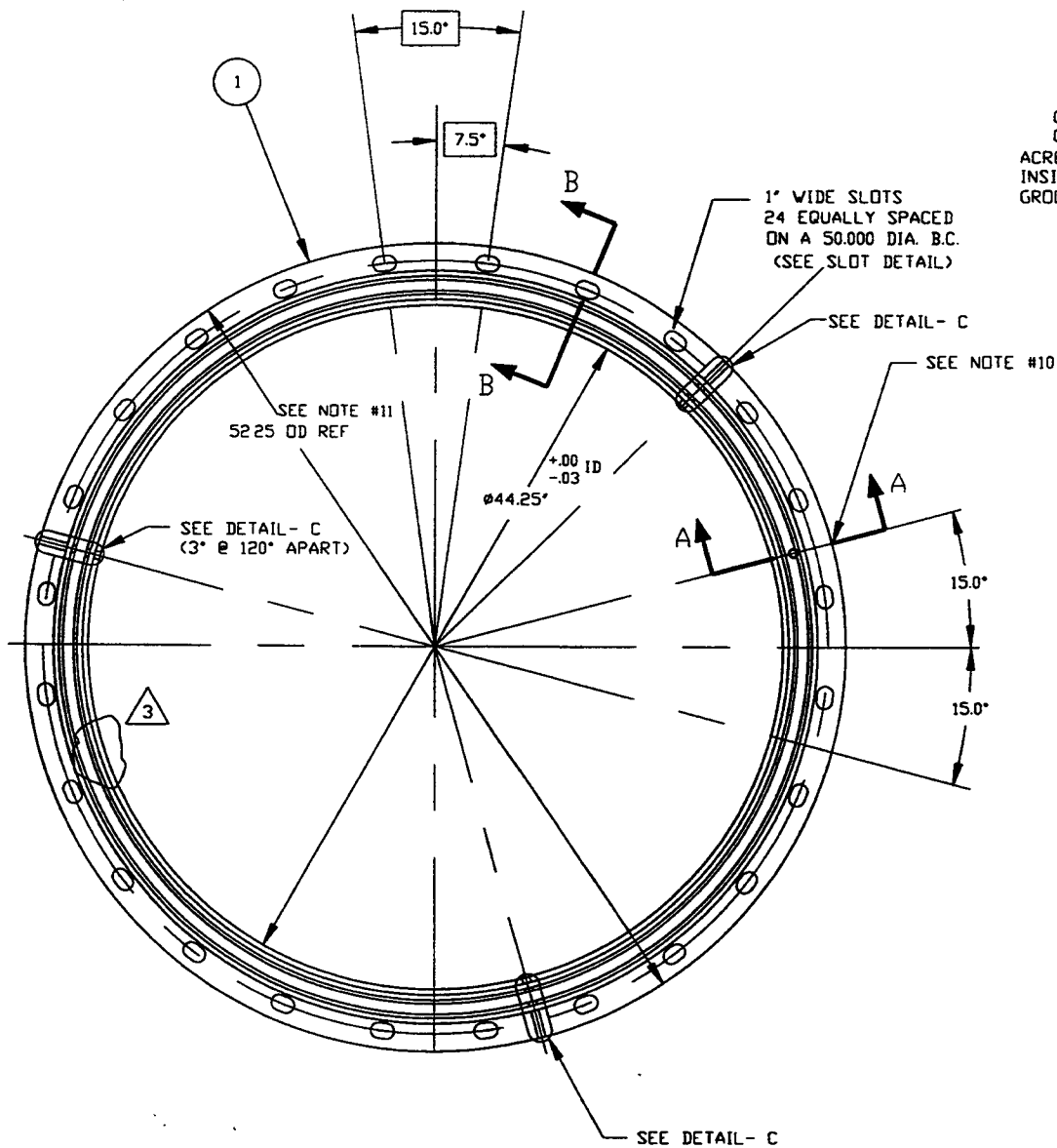
SECTION B - B

- 10: SCRIBE OUTER EDGE OF FLANGE WITH SCRIBE LINE & METAL STAMP "ANNULUS"
- 11: DO NOT MACHINE FLANGE O.D. ALL FORGING MANUFACT NOS. TO BE LEFT INTACT

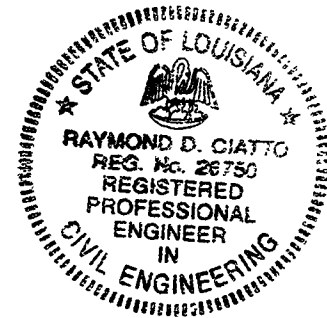
THIS FLANGE TO BE MADE FROM P/N V049M244-1

WEIGHT: 215#

Raymond D. Catto - PE - WA.



INNER O-RING .275 DIA. STOCK x 140 3/4' LG. VULCANIZED - BAKED VITON E-60C
 OUTER O-RING .275 DIA. STOCK x 150' LG. VULCANIZED - BAKED VITON E-60C



EXPIRES 8/1/97

PROPRIETARY AND CONFIDENTIAL

THIS DOCUMENT CONTAINS PROPRIETARY INFORMATION BELONGING TO PROCESS SYSTEMS INTERNATIONAL, INC. OR ITS AFFILIATED COMPANIES AND SHALL BE USED ONLY FOR THE PURPOSE FOR WHICH IT WAS SUPPLIED. IT SHALL NOT BE COPIED, REPRODUCED OR OTHERWISE USED, NOR SHALL SUCH INFORMATION BE FURNISHED IN WHOLE OR IN PART TO OTHERS EXCEPT IN ACCORDANCE WITH THE TERMS OF ANY AGREEMENT UNDER WHICH IT WAS SUPPLIED OR WITH THE PRIOR WRITTEN CONSENT OF PROCESS SYSTEMS INTERNATIONAL, INC. AND SHALL BE RETURNED UPON REQUEST.

UNLESS OTHERWISE SPECIFIED

DIMENSIONS ARE IN INCHES
 TOLERANCES:
 FRACTIONAL ± 1/16
 DECIMAL ± .005
 TWO PLACE DECIMAL ± .002
 THREE PLACE DECIMAL ± .001
 FINISHED SURFACE RMS 63
 BREAK CORNERS - RADIUS OUT-ANG
 REMOVE ALL BURRS

DO NOT SCALE THIS DWG.

USED ON:
 NEXT ASS'Y:

REV.	DESCRIPTION	CHKD	DRAWN	DATE	DCD
4	REISSUED FOR FABRICATION	GS	PV	11/26/96	0368
3	REISSUED FOR FABRICATION	DMV	GS	10/21/96	0314
2	REISSUED FOR FABRICATION	DMV	GS	10/8/96	0294
1	RELEASED FOR FABRICATION	DMV	GS	7/31/96	0218
0	ISSUED FOR FDR			4/30/96	0150

PROCESS SYSTEMS INTERNATIONAL, INC.
 30 WALSH DR. WESTBOROUGH, MASSACHUSETTS 01581 USA

44.25" ID GROOVED AND
 SLOTTED FLG @ 44' GATE VLV
 LIGO VACUUM EQUIPMENT

CAD FILE: V0494060
 SIZE: C
 DWG NO: V049-4-060
 REV: 4
 SCALE: REGEN
 SHEET: 1 OF 1

LIGO-D961130-04-V

Oct 02, 1995 - 09:35:21