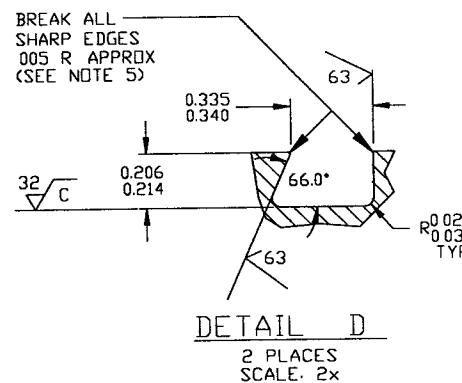
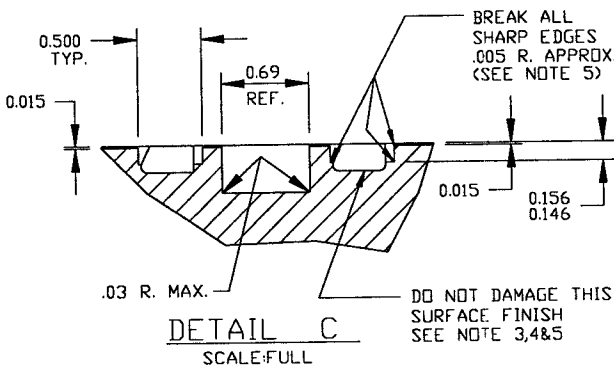
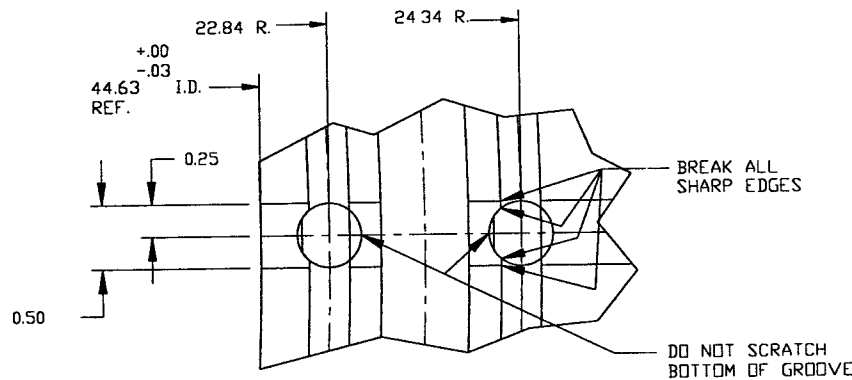
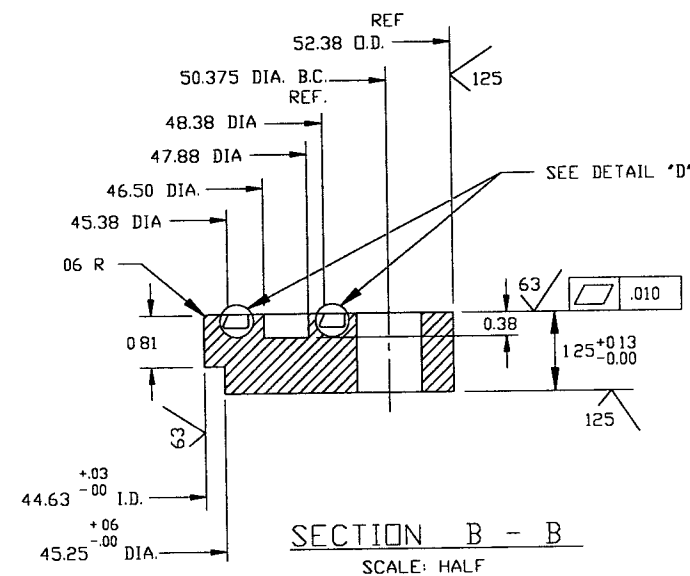
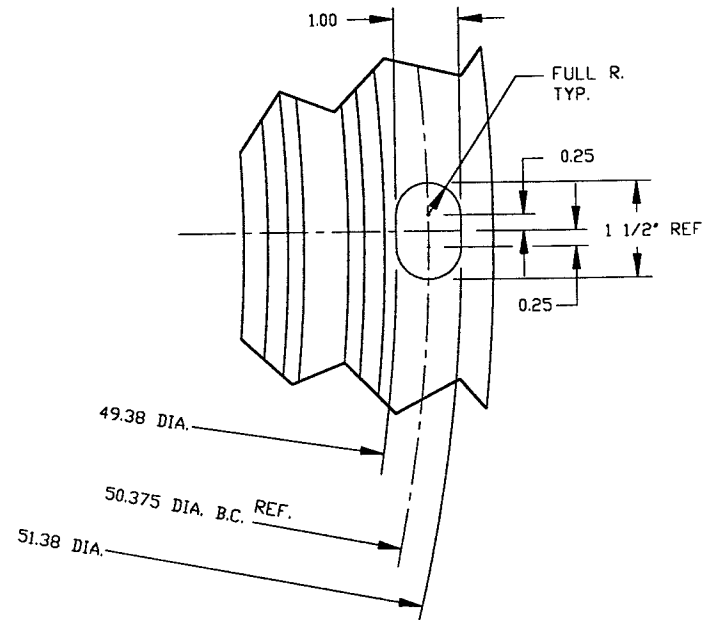


SECTION A - A
2 PLACES 180° APART
SCALE: HALF



- NOTE
- 1: FLANGES WILL BE USED IN ULTRA HIGH VACUUM SERVICE SEE SPECIFICATION V049-2-040 FOR MATERIAL REQUIREMENTS
 - 2: ALL MATERIAL TO BE 304L STAINLESS STEEL
 - 3: FLANGES MUST BE PACKAGED, HANDLED, AND SHIPPED IN SUCH A MANNER AS TO MAINTAIN SPECIFIED SURFACE FINISHES AND FLATNESS TOLERANCES.
 - 4: MACHINE TOOL LAY TO BE CONCENTRIC ON ALL SURFACES THAT REQUIRE A 32 RMS FINISH
 - 5: NO ABRASIVE STONES, CLOTHS OR GRINDING WHEELS MAY BE USED.
 - 6: NO OIL BASED OR HYDROCARBON BASED CUTTING FLUIDS TO BE USED.
 - 7: NO CARBON STEEL OR OTHER SOURCE OF IRON CONTAMINATION ARE TO COME IN CONTACT WITH FLANGES DURING MANUFACTURING OR HANDLING.
 - 8: FLANGE FINAL FACE CUTS AND O-RING GROOVES MUST BE MACHINED DURING THE SAME SETUP.
 - 9: STEAM CLEAN & WRAP IN POLYETHYLENE TO PREVENT CONTAMINATION DURING SHIPPING



NOT FOR CONSTRUCTION

INNER O-RING .275 DIA. STOCK x 140 3/4" LG. VULCANIZED - BAKED VITON E-60C
OUTER O-RING .275 DIA. STOCK x 150" LG. VULCANIZED - BAKED VITON E-60C

SCALE: 1 1/2 -1'-0

10: SCRIBE OUTER EDGE OF FLANGE WITH SCRIBE LINE & METAL STAMP "ANNULUS"

Raymond D. Latta, P.E.
5/16/96

PROPERTY AND CONFIDENTIAL
THIS DRAWING CONTAINS PROPRIETARY INFORMATION BELONGING TO PROCESS SYSTEMS INTERNATIONAL, INC. OR ITS AFFILIATED COMPANIES AND SHALL BE USED ONLY FOR THE PURPOSE FOR WHICH IT WAS SUPPLIED. IT SHALL NOT BE COPIED, REPRODUCED OR OTHERWISE USED, NOR SHALL SUCH INFORMATION BE FURNISHED IN WHOLE OR IN PART TO OTHERS EXCEPT IN ACCORDANCE WITH THE TERMS OF ANY AGREEMENT UNDER WHICH IT WAS SUPPLIED OR WITH THE PRIOR WRITTEN CONSENT OF PROCESS SYSTEMS INTERNATIONAL, INC. AND SHALL BE RETURNED UPON REQUEST.

UNLESS OTHERWISE SPECIFIED DIMENSIONS ARE IN INCHES TOLERANCES:
FRACTIONAL: ± 1/16
ANGULAR: MACH ± 30°-30' BEND ± 2°
TWO PLACE DECIMAL: ± .010
THREE PLACE DECIMAL: ± .005
FINISHED SURFACE: RMS 63
BREAK CORNERS: IN .005 OUT .005
REMOVE ALL BURRS

DO NOT SCALE THIS DWG
USED ON:
NEXT ASS'Y:

REV	DESCRIPTION	ISSUE DESCRIPTION
0	ISSUED FOR FDR	

PROCESS SYSTEMS INTERNATIONAL, INC. 20 WALKUP DR. WESTBOROUGH, MASSACHUSETTS 01581 USA			
44 5/8" ID GROOVED AND SLOTTED FLANGE, LIGO VACUUM EQUIPMENT			
CAD FILE	SIZE	DWG NO	REV
V0494060	C	V049-4-060	0
SCALE	AS NOTED	SHEET	1 OF 1

LIGO D961130-00-V

Oct 02, 1995 - 09:35:21