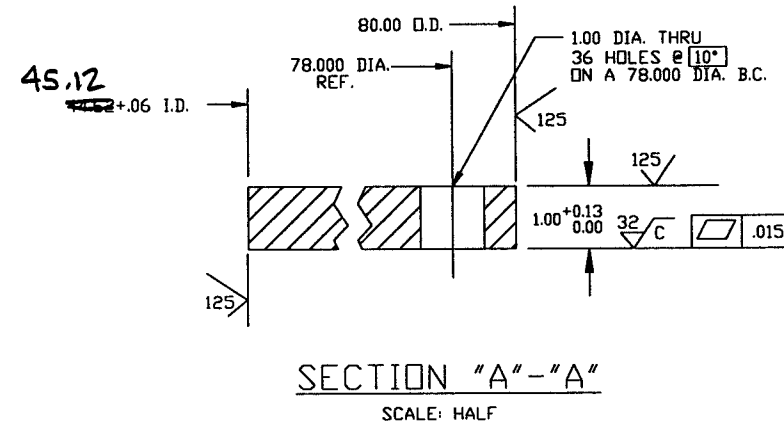
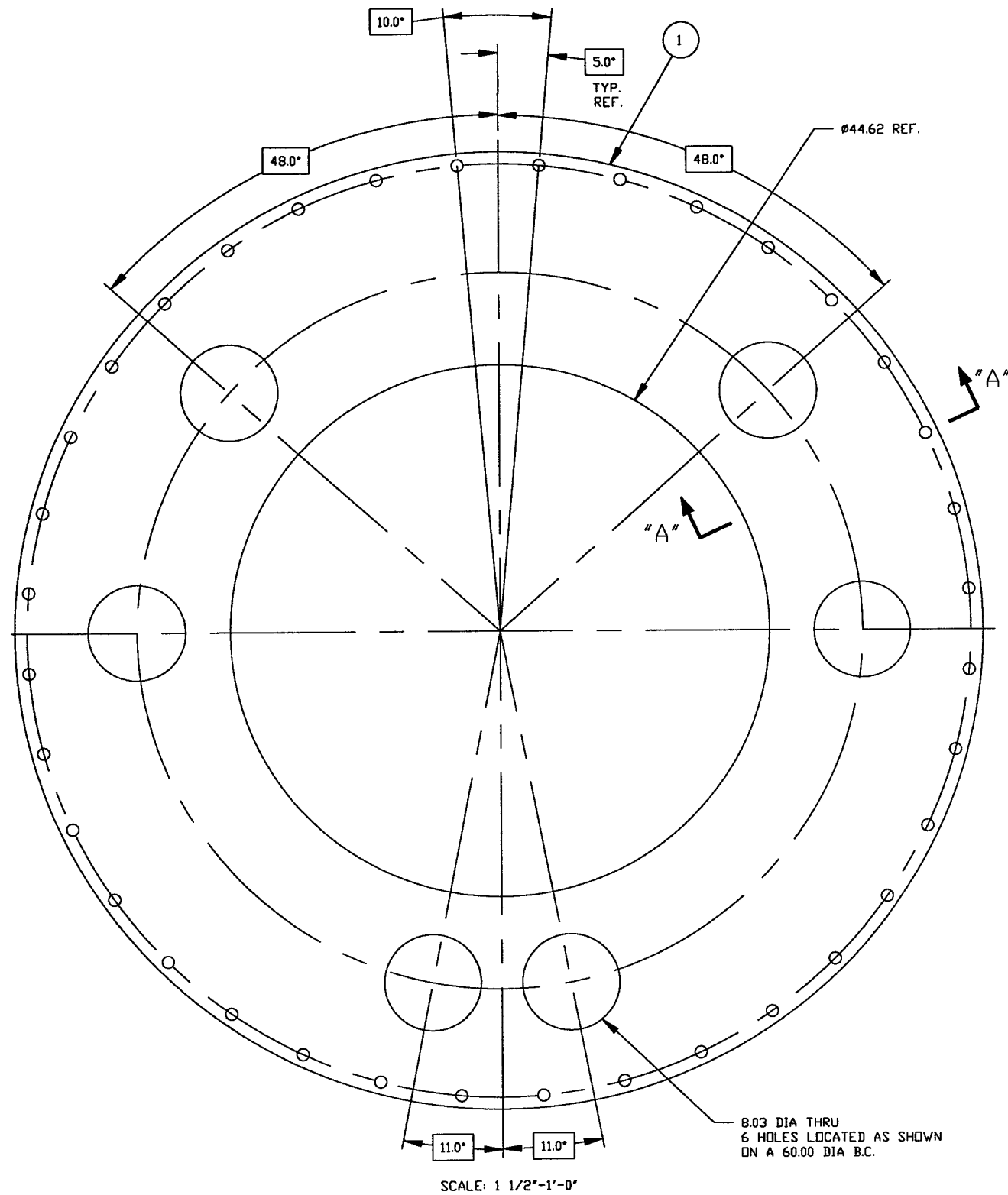


NOT FOR CONSTRUCTION



- NOTE:**
- 1: FLANGES WILL BE USED IN ULTRA HIGH VACUUM SERVICE SEE SPECIFICATION V049-2-040 FOR MATERIAL REQUIREMENTS
 - 2: ALL MATERIAL TO BE 304L STAINLESS STEEL
 - 3: FLANGES MUST BE PACKAGED, HANDLED, AND SHIPPED IN SUCH A MANNER AS TO MAINTAIN SPECIFIED SURFACE FINISHES AND FLATNESS TOLERANCES.
 - 4: MACHINE TOOL LAY TO BE CONCENTRIC ON ALL SURFACES THAT REQUIRE A 32 RMS FINISH
 - 5: NO ABRASIVE STONES, CLOTHS OR GRINDING WHEELS MAY BE USED.
 - 6: NO OIL BASED OR HYDROCARBON BASED CUTTING FLUIDS TO BE USED.
 - 7: NO CARBON STEEL OR OTHER SOURCE OF IRON CONTAMINATION ARE TO COME IN CONTACT WITH FLANGES DURING MANUFACTURING OR HANDLING.
 - 8: STEAM CLEAN & WRAP IN POLYETHELENE TO PREVENT CONTAMINATION DURING SHIPPING.

Raymond D. Liatto, PE
5/6/96

PROF AND CONFIDENTIAL		UNLESS OTHERWISE SPECIFIED		PROCESS SYSTEMS INTERNATIONAL, INC.	
THIS CONTAINS PROPRIETARY INFORMATION LONGING TO PROCESS SYSTEMS INTERNATIONAL, INC. OR ITS AFFILIATED COMPANIES AND SHALL BE USED ONLY FOR THE PURPOSE FOR WHICH IT WAS SUPPLIED. IT SHALL NOT BE COPIED, REPRODUCED OR OTHERWISE USED, NOR SHALL SUCH INFORMATION BE FURNISHED IN WHOLE OR IN PART TO OTHERS EXCEPT IN ACCORDANCE WITH THE TERMS OF ANY AGREEMENT UNDER WHICH IT WAS SUPPLIED OR WITH THE PRIOR WRITTEN CONSENT OF PROCESS SYSTEMS INTERNATIONAL, INC. AND SHALL BE RETURNED UPON REQUEST.		DIMENSIONS ARE IN INCHES TOLERANCES: FRACTIONAL ± 1/16 ANGULAR ± 30° BOND ± 2° TWO PLACE DECIMAL ± .010 THREE PLACE DECIMAL ± .005 FINISHED SURFACE RMS AS BREAM CORNERS IN .005 OUT .003 REMOVE ALL BURRS		20 WALKUP DR. WESTBOROUGH, MASSACHUSETTS 01581 USA	
DWG. NO.	DESCRIPTION	DO NOT SCALE THIS DWG	0	ISSUED FOR FDR	44 5/8" I.D. X 72 1/4 I.D. FLANGE DETAIL (FLAT FACED) LIGO VACUUM EQUIPMENT
8	7	USED ON:	REV.	DESCRIPTION	CAD FILE: V0494047
		NEXT ASS'Y:		ISSUE DESCRIPTION	SIZE: C
					DWG NO.: V049-4-047
					REV. 0
					SCALE: AS NOTED
					SHEET: 1 OF 1

LIGO 1D961120-00-V

Feb 28, 1996 - 15:29:46