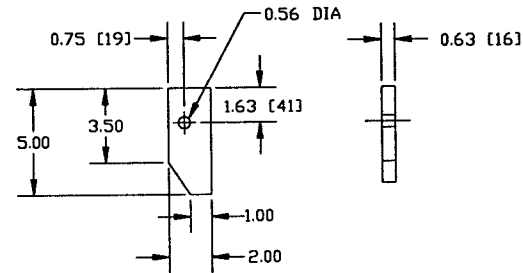
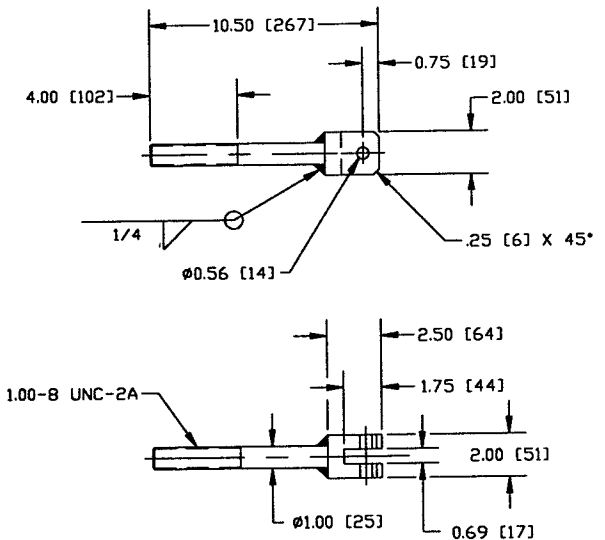
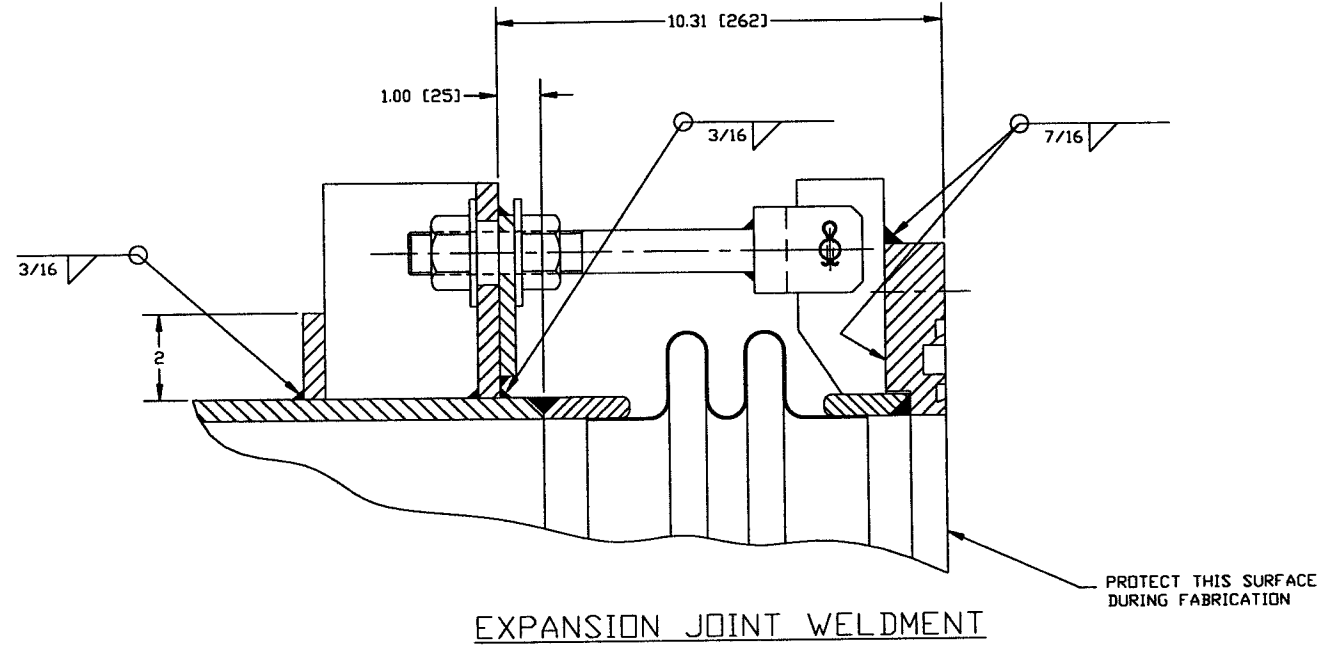


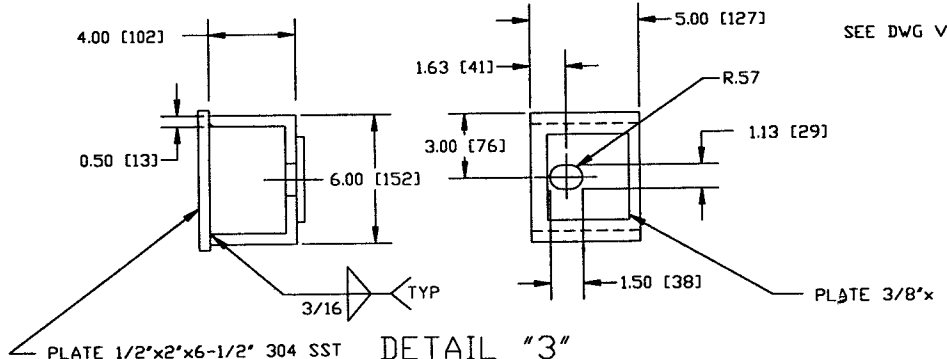
DETAIL "4"
SCALE: HALF
MAT'L: A320 BB



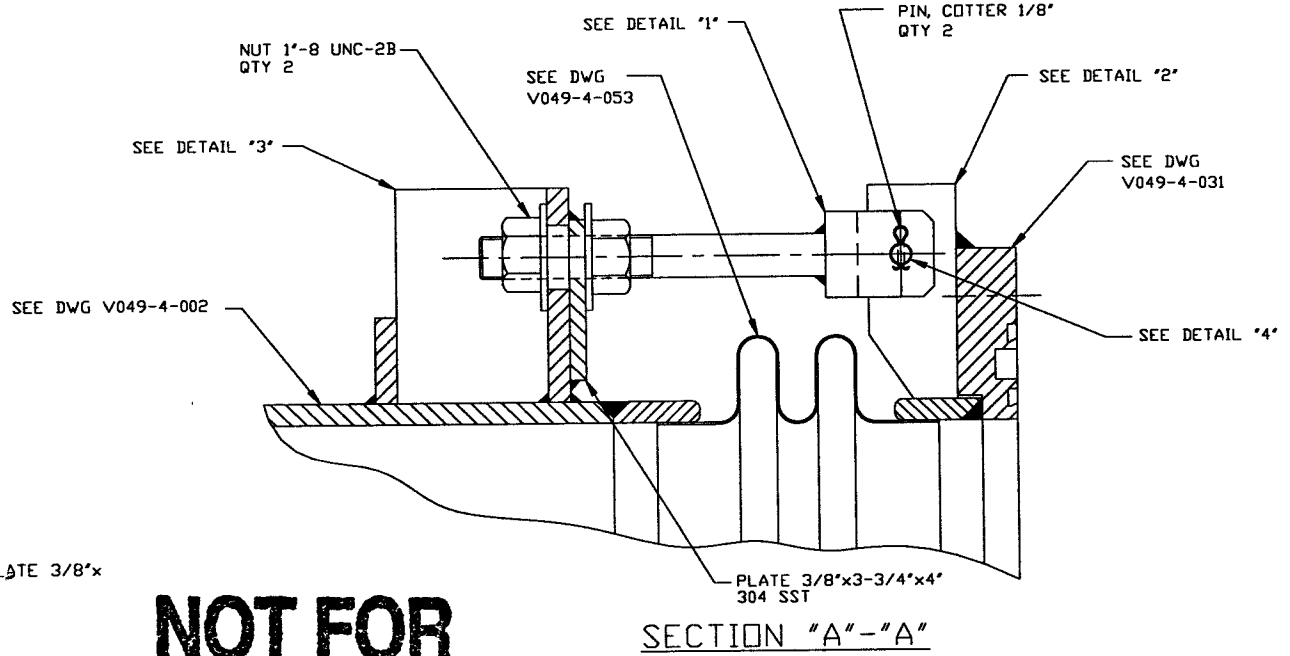
DETAIL "2"
SCALE: QUARTER
MAT'L: A240 TP 304 SST



DETAIL "1"
SCALE: QUARTER
MAT'L: A240 TP 304 SST



DETAIL "3"
SCALE: QUARTER
MAT'L: A240 TP 304 SST



SECTION "A"-"A"
SCALE: HALF
QTY: 4

NOT FOR CONSTRUCTION

Raymond O. Latta, PE
5/6/96

<p>THIS DRAWING CONTAINS PROPRIETARY INFORMATION BELONGING TO PROCESS SYSTEMS INTERNATIONAL, INC. OR ITS AFFILIATED COMPANIES AND SHALL BE USED ONLY FOR THE PURPOSE FOR WHICH IT WAS SUPPLIED. IT SHALL NOT BE COPIED, REPRODUCED OR OTHERWISE USED, NOR SHALL SUCH INFORMATION BE FURNISHED IN WHOLE OR IN PART TO OTHERS EXCEPT IN ACCORDANCE WITH THE TERMS OF ANY AGREEMENT UNDER WHICH IT WAS SUPPLIED OR WITH THE PRIOR WRITTEN CONSENT OF PROCESS SYSTEMS INTERNATIONAL, INC. AND SHALL BE RETURNED UPON REQUEST.</p>			
DWG. NO.	DESCRIPTION	DWG. NO.	DESCRIPTION
	REFERENCE DRAWINGS		

<p>UNLESS OTHERWISE SPECIFIED DIMENSIONS ARE IN INCHES</p> <p>TOLERANCES: FRACTIONAL: ± ANGULAR/30° BEND ±2° TWO PLACE DECIMAL: ± .01 THREE PLACE DECIMAL: ± .003 FINISHED SURFACE RBS BREAK CORNERS IN REMOVE ALL BURRS</p> <p>DO NOT SCALE THIS DRAWING</p> <p>USED ON: _____</p> <p>NEXT ASS'Y: _____</p>			
REV	DESCRIPTION	CHKD	DRWN
1	RE-ISSUED FOR FDR	MA	04/06/96
0	ISSUED FOR FDR	MA	04/02/96
	ISSUE DESCRIPTION	DATE	DESN

<p>PROCESS SYSTEMS INTERNATIONAL, INC. 20 WALKUP DR. WESTBOROUGH, MASSACHUSETTS 01581 USA</p> <p>HAM BELLOWS TIE ROD ASSY HORIZONTAL ACCESS MODULE (HAM) LIGD VACUUM EQUIPMENT</p> <p>CAN FILE: V0494040 SIZE: D DWG. NO.: V049-4-040 REV: 1</p> <p>SCALE: AS NOTED SHEET: 1 OF 1</p>			
---	--	--	--

2100-D96116-01-V