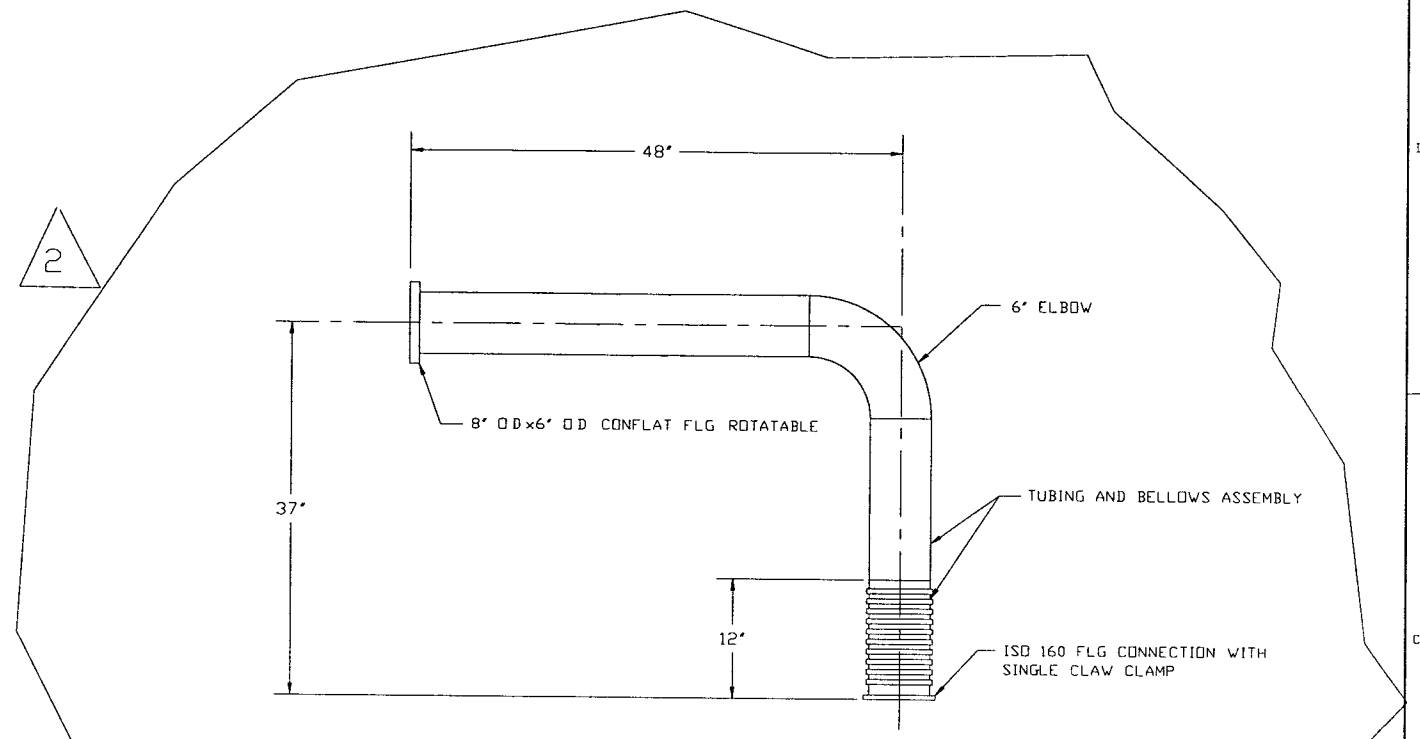
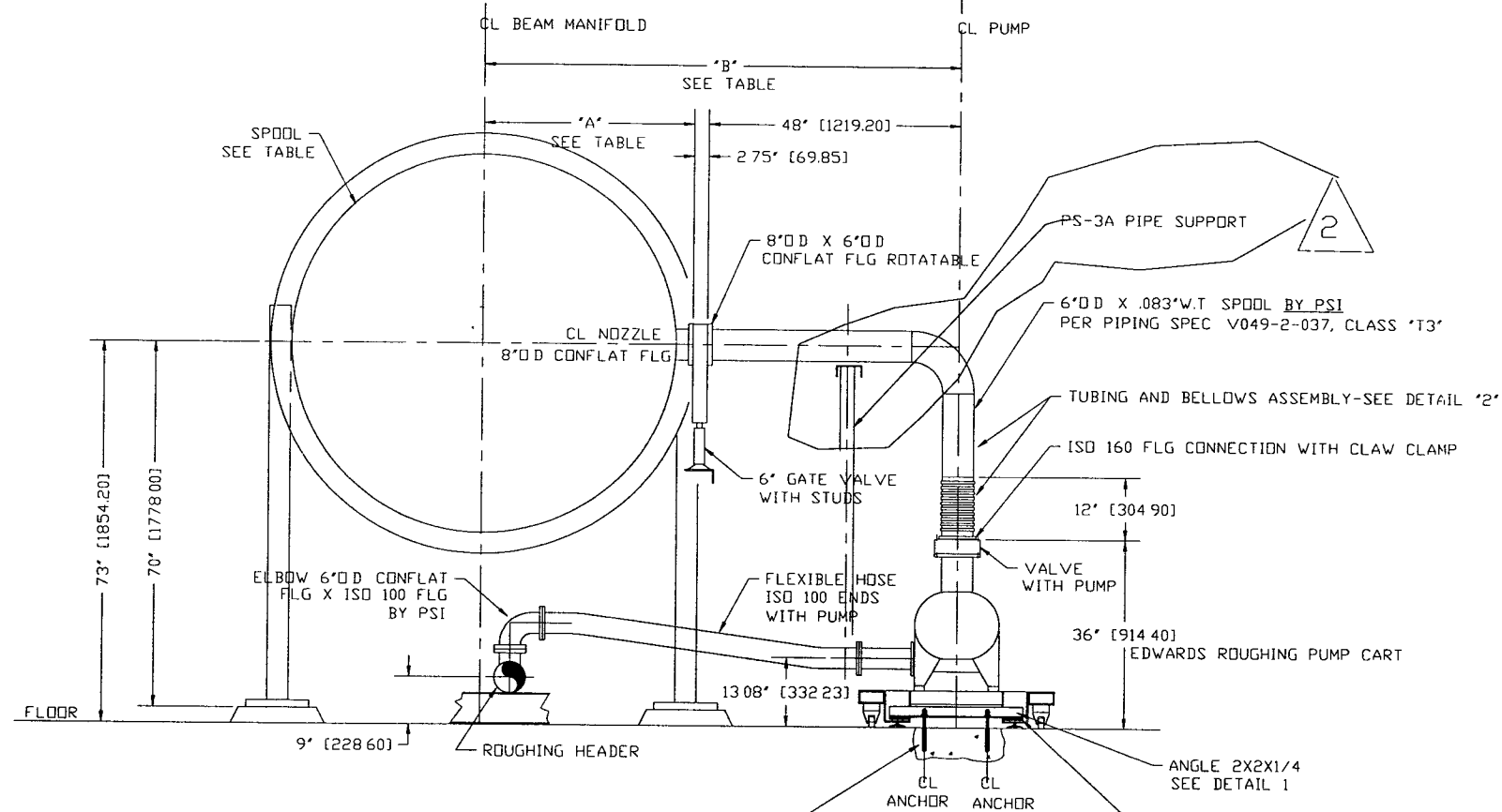


PLAN



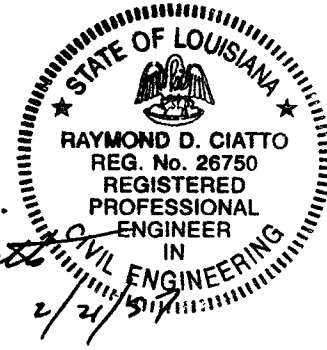
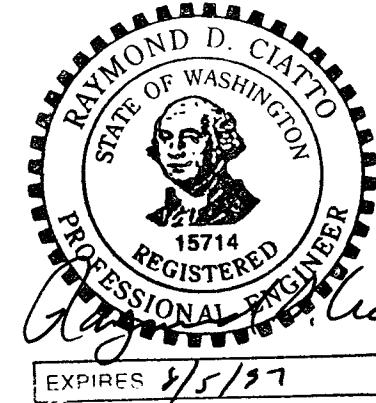
DETAIL 2

SCALE 1 1/2"=1'-0"
SPOOL PIECE PSI P/N V0494010P1

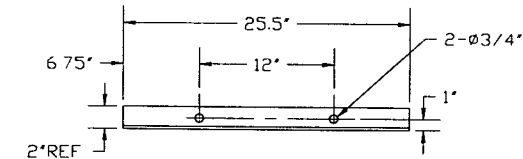


ELEVATION

NOTE FIELD TO INSTALL (4) HILTI HVA CONCRETE ADHESIVE ANCHORS WITH HFA INSERTS 1/2 X 4 1/4 EMBEDMENT USE VIBRATION ISOLATION BOLT KIT SIMILAR TO BASES OF TURBO CART EXTENSIONS SHOWN ON DWG V049-4-012



SPOOL	'A'	'B'
WB-5B	18 5/8"	69 3/8"
WB-6	27 1/2"	78 1/4"
WBE-5	39 1/2"	90 1/4"
WBE-6	39 1/2"	90 1/4"
LB-5B	18 5/8"	69 3/8"
LBE-5	39 1/2"	90 1/4"
LBE-6	39 1/2"	90 1/4"



DETAIL 1
SCALE 1 1/2"=1'-0"

NOTES:
INSTALL PER VACUUM PUMP FIELD INSTALLATION PROCEDURE V049-2-175

D961097-02-V

DWG. NO	DESCRIPTION	DWG. NO	DESCRIPTION

UNLESS OTHERWISE SPECIFIED DIMENSIONS ARE IN INCHES

TOLERANCES:

FRACTIONAL ±

ANGULAR MACH ±0°-30' BEND ±2°

TWO PLACE DECIMAL ±.01

THREE PLACE DECIMAL ±.005

FINISHED SURFACE RMS

BREAK CORNERS IN OUT

REMOVE ALL BURRS

DO NOT SCALE THIS DRAWING

USED ON:

NEXT ASS'Y:

REV	DESCRIPTION	CHKD	DRWN	DATE	DESH
2	ISSUED FOR FABRICATION	DMW	RDG	REC	PV 02/20/97 0387
1	FDR DESIGN UPDATE/ ISSUED FOR BID	DMW	RDG	REC	TOV 4/26/96 0150
0	ISSUED FOR FDR				

PROCESS SYSTEMS INTERNATIONAL INC.
20 WALKUP DR WESTBOROUGH, MASSACHUSETTS 01581 USA

ROUGHING PUMP CART ARRANGEMENT ASSEMBLY

LIGO VACUUM EQUIPMENT

CAD FILE: V0494010
SIZE: D
DWG NO: V049-4-010
REV: 2

SCALE: 3/4"=1'-0"
SHEET: 1 OF 1