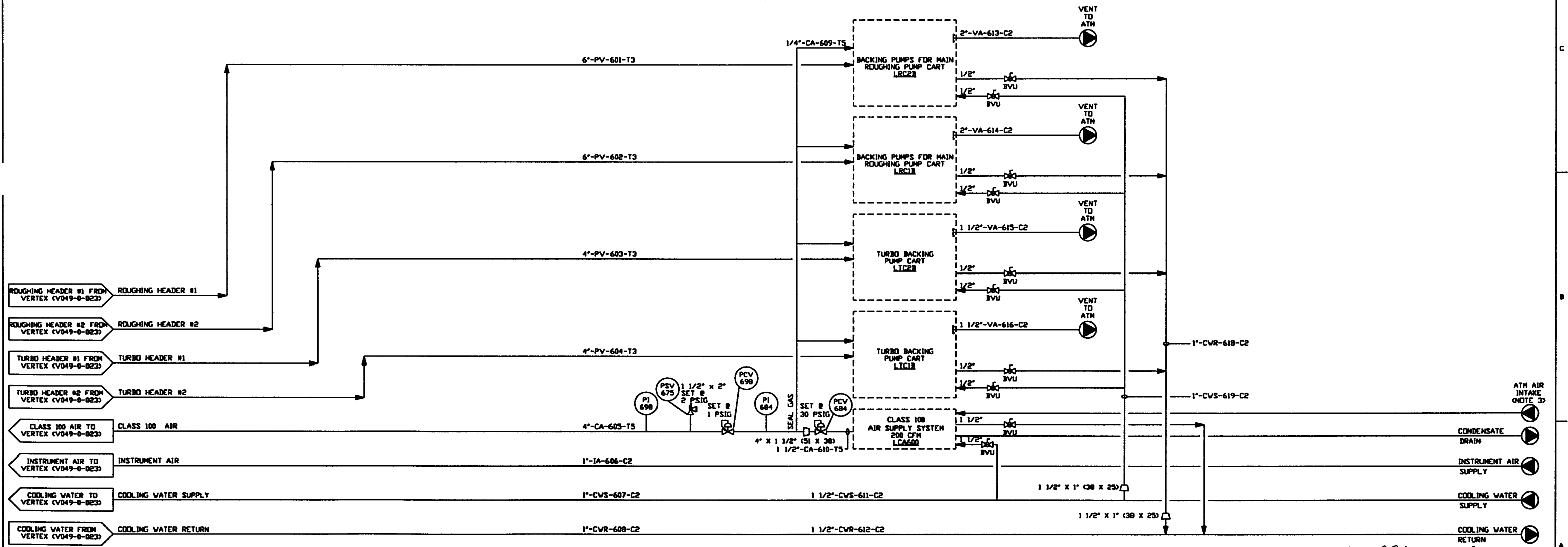


- NOTES:**
1. DIMENSIONS IN ( ) ARE IN MILLIMETERS.
  2. BEAM MANIFOLD DIMENSIONS INDICATE INSIDE DIAMETERS.
  3. ATMOSPHERIC AIR INTAKE SHALL BE LOCATED AWAY FROM SOURCES OF CONTAMINATION.



<p><b>PROPRIETARY AND CONFIDENTIAL</b></p> <p>CLIENT CONTAINS PROPRIETARY INFORMATION BELONGING TO PROCESS SYSTEMS INTERNATIONAL, INC. OR ITS SUBSIDIARIES AND SHALL BE USED ONLY FOR THE PURPOSE FOR WHICH IT WAS SUPPLIED. IT SHALL NOT BE COPIED, REPRODUCED OR OTHERWISE USED, NOR SHALL SUCH INFORMATION BE FURNISHED IN WHOLE OR IN PART TO ANY OTHER PARTY WITHOUT THE WRITTEN CONSENT OF PROCESS SYSTEMS INTERNATIONAL, INC. AND SHALL BE RETURNED UPON REQUEST.</p>		<p>UNLESS OTHERWISE SPECIFIED DIMENSIONS ARE IN INCHES</p> <p>TOLERANCES:          FRACTIONAL &amp; DECIMAL: ±0.005"          ANGLES: ±30"          HOLE: ±0.005"          TWO PLACE DECIMAL: ±0.01"          THREE PLACE DECIMAL: ±0.005"          FINISHED SURFACE: ±0.005"          BREAK CORNERS: R0.0625"          REMOVE ALL BURRS</p>		<p>1 ISSUE FOR FDR</p> <p>0 ISSUE FOR DESIGN</p>		<p>REB TS RT SM DMcV RJV</p>		<p>04.26.96 0134</p> <p>01.03.96 0031</p>		<p>SCALE NONE SHEET 1 OF 1</p>	
<p>V049-0-023 P &amp; ID VERTEX SECTION</p> <p>V049-0-001 P &amp; ID LEGEND</p>		<p>DESCRIPTION</p>		<p>DESCRIPTION</p>		<p>DESCRIPTION</p>		<p>DATE</p>		<p>REV.</p>	
<p>DWG. NO.</p>		<p>DESCRIPTION</p>		<p>DESCRIPTION</p>		<p>DESCRIPTION</p>		<p>DATE</p>		<p>REV.</p>	

LIGO 0961090-01-V

**PROCESS SYSTEMS INTERNATIONAL, INC.**  
 20 WALKUP DR. WESTBOROUGH, MASSACHUSETTS 01581 USA

**PIPING & INSTRUMENTATION DIAGRAM**  
 LIGO VACUUM EQUIPMENT  
 LOUISIANA SITE  
 CORNER STATION MECHANICAL ROOM

CAS FILE: V0490026  
 SIZE: D  
 SHEET: 1 OF 1