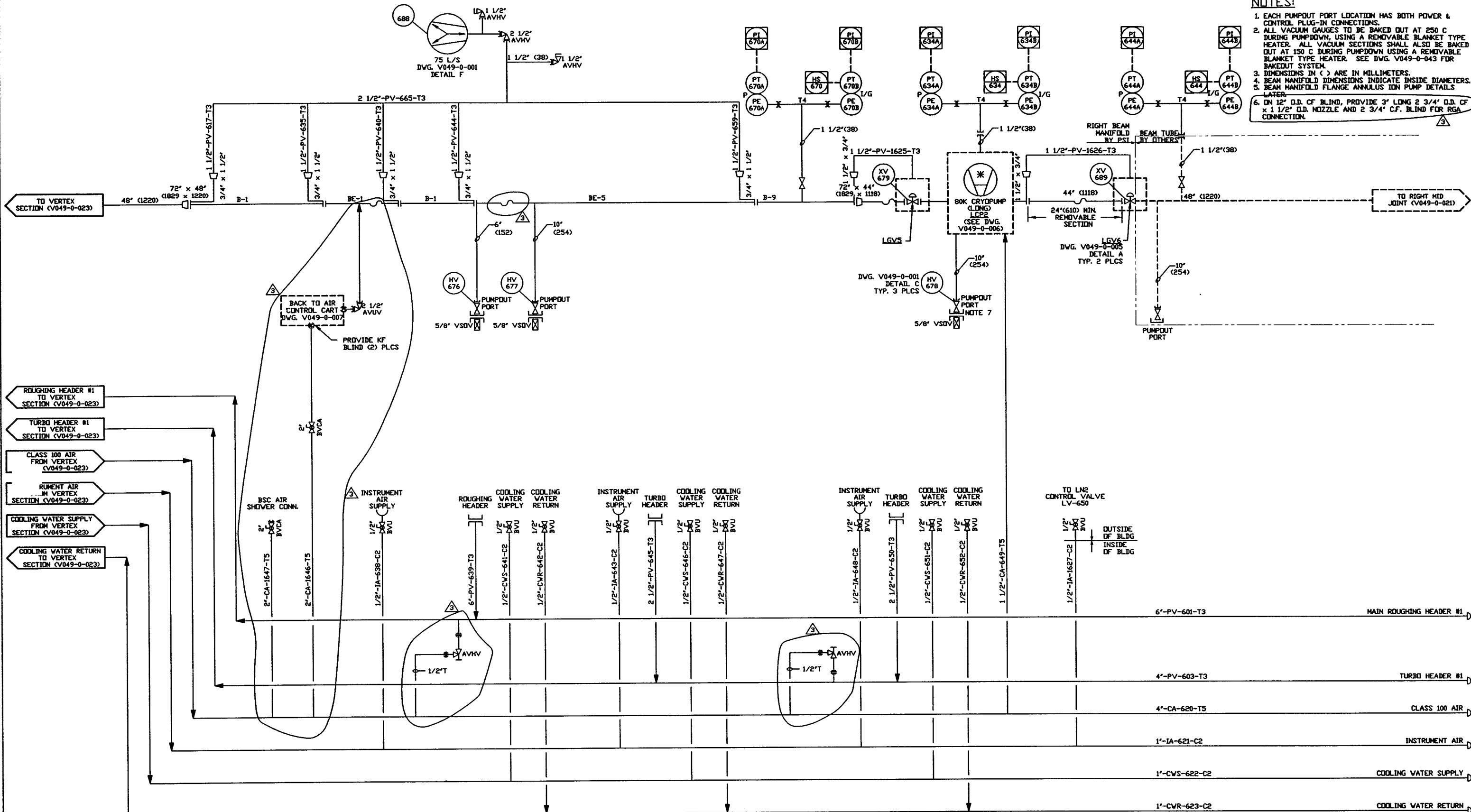


NOTES:

1. EACH PUMPOUT PORT LOCATION HAS BOTH POWER & CONTROL PLUG-IN CONNECTIONS.
2. ALL VACUUM GAUGES TO BE BAKED OUT AT 250 C DURING PUMPOUT, USING A REMOVABLE BLANKET TYPE HEATER. ALL VACUUM SECTIONS SHALL ALSO BE BAKED OUT AT 150 C DURING PUMPOUT USING A REMOVABLE BLANKET TYPE HEATER. SEE DWG. V049-0-043 FOR BAKEDOUT SYSTEM.
3. DIMENSIONS IN () ARE IN MILLIMETERS.
4. BEAM MANIFOLD DIMENSIONS INDICATE INSIDE DIAMETERS.
5. BEAM MANIFOLD FLANGE ANNULUS IDN PUMP DETAILS LATER.
6. ON 12" O.D. CF BLIND, PROVIDE 3" LONG 2 3/4" O.D. CF x 1 1/2" O.D. NOZZLE AND 2 3/4" CF. BLIND FOR RGA CONNECTION.



- ROUGHING HEADER #1 TO VERTEX SECTION (V049-0-023)
- TURBO HEADER #1 TO VERTEX SECTION (V049-0-023)
- CLASS 100 AIR FROM VERTEX (V049-0-023)
- RUIMENT AIR IN VERTEX SECTION (V049-0-023)
- COOLING WATER SUPPLY FROM VERTEX SECTION (V049-0-023)
- COOLING WATER RETURN TO VERTEX SECTION (V049-0-023)

DWG. NO.	DESCRIPTION	DWG. NO.	DESCRIPTION
V049-0-023	P & ID VERTEX SECTION		
V049-0-021	P & ID LEFT & RIGHT MID JOINTS		
V049-0-006	P & ID 80K CRYOPUMP		
V049-0-001	P & ID LEGEND		

EQUIP. THIS DWG.	LGV5 LCP2
	LGV6

REV	DESCRIPTION	ISSUE DESCRIPTION
3	REVISED	
2	ISSUE FOR FDR UPDATE	
1	ISSUE FOR FDR	
0	ISSUE FOR DESIGN	

D961088-03-V

PROCESS SYSTEMS INTERNATIONAL INC.
20 WALLOUP DR. WESTBOROUGH, MASSACHUSETTS 01581 USA

DATE	02.14.97	0435
DATE	10.25.96	0309
DATE	04.26.96	0134
DATE	01.03.96	0031

PIPING & INSTRUMENTATION DIAGRAM
LIGO VACUUM EQUIPMENT
LOUISIANA SITE
RIGHT BEAM MANIFOLD

CAD FILE	V0490024	SIZE	D	DWG. NO.	V049-0-024	REV.	3
SCALE	NONE	SHEET					

1 OF 1