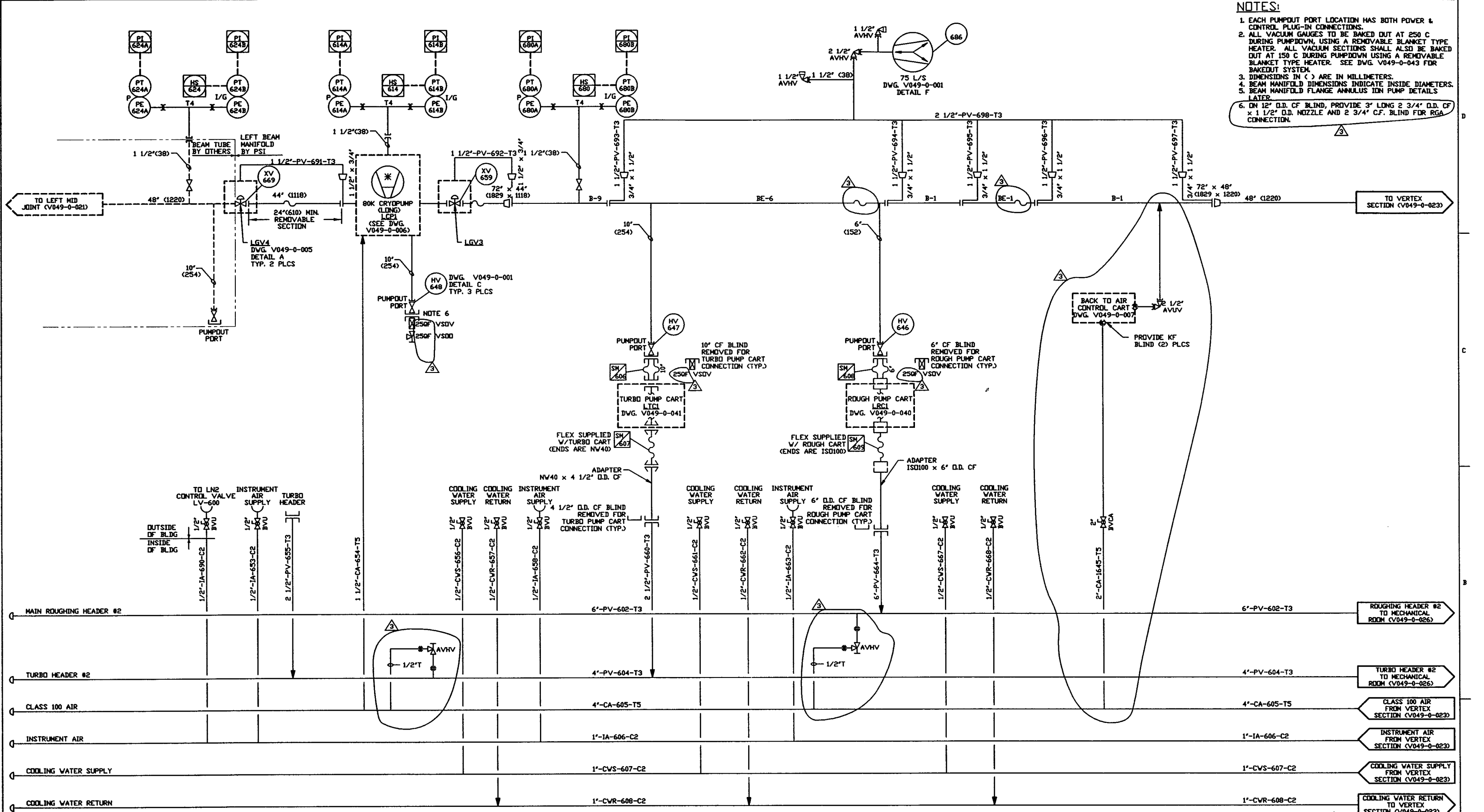


- NOTES:**
1. EACH PUMPOUT PORT LOCATION HAS BOTH POWER & CONTROL PLUG-IN CONNECTIONS.
 2. ALL VACUUM GAUGES TO BE BAKED OUT AT 250 C DURING PUMPDOWN, USING A REMOVABLE BLANKET TYPE HEATER. ALL VACUUM SECTIONS SHALL ALSO BE BAKED OUT AT 150 C DURING PUMPDOWN USING A REMOVABLE BLANKET TYPE HEATER. SEE DWG. V049-0-043 FOR BAKEDOUT SYSTEM.
 3. DIMENSIONS IN () ARE IN MILLIMETERS.
 4. BEAM MANIFOLD DIMENSIONS INDICATE INSIDE DIAMETERS.
 5. BEAM MANIFOLD FLANGE ANNULUS ION PUMP DETAILS LATER.
 6. ON 12" O.D. CF BLIND, PROVIDE 3" LONG 2 3/4" O.D. CF x 1 1/2" O.D. NOZZLE AND 2 3/4" C.F. BLIND FOR RGA CONNECTION.



0961086-03-V

<p>PROPRIETARY AND CONFIDENTIAL</p> <p>IT CONTAINS PROPRIETARY INFORMATION BELONGING TO PROCESS SYSTEMS INTERNATIONAL, INC. OR ITS COMPANIES AND SHALL BE KEPT SECRET FOR THE PURPOSE FOR WHICH IT WAS SUPPLIED. IT SHALL NOT BE COPIED, REPRODUCED OR OTHERWISE USED, NOR SHALL SUCH INFORMATION BE FURNISHED IN WHOLE OR IN PART TO OTHERS EXCEPT BY AGREEMENT WITH THE TERMS OF ANY AGREEMENT UNDER WHICH IT WAS SUPPLIED OR WITH THE PRIOR WRITTEN CONSENT OF PROCESS SYSTEMS INTERNATIONAL, INC. AND SHALL BE RETURNED UPON REQUEST.</p>		<p>V049-0-041 P & ID TURBO PUMP CART</p> <p>V049-0-040 P & ID ROUGHING PUMP CART</p> <p>V049-0-023 P & ID VERTEX SECTION</p> <p>V049-0-021 P & ID LEFT & RIGHT MID JOINTS</p> <p>V049-0-006 P & ID 80K CRYOPUMP</p> <p>V049-0-001 P & ID LEGEND</p>	<p>EQUIP. THIS DWG.</p> <p>LGV3 LTC1</p> <p>LGV4 LRC1</p> <p>LCP1</p>	<p>UNLESS OTHERWISE SPECIFIED DIMENSIONS ARE IN INCHES</p> <p>TOLERANCES:</p> <p>FRACTIONAL & ANGULAR: ±0.005" BEND ±0.010"</p> <p>THIS PLACE DECIMAL & IN THREE PLACE DECIMAL & HAS FINISHED SURFACE AND BREAK CORNERS IN REMOVE ALL BURRS</p>	<p>DO NOT SCALE THIS DRAWING</p> <p>USED ON:</p> <p>NEXT ASS'Y:</p>	<p>3 REVISED</p> <p>2 ISSUE FOR FDR UPDATE</p> <p>1 ISSUE FOR FDR</p> <p>0 ISSUE FOR DESIGN</p>	<p>TS RT SM IMCV RJV</p> <p>REB TS RT SM IMCV RJV</p> <p>CHKD DRWN DATE DECD</p>	<p>02.14.97 0435</p> <p>10.25.96 0309</p> <p>04.26.96 0134</p> <p>01.03.96 0031</p>	<p>PROCESS SYSTEMS INTERNATIONAL, INC.</p> <p>20 WALCUP DR. WESTBOROUGH, MASSACHUSETTS 01581 USA</p> <p>PIPING & INSTRUMENTATION DIAGRAM</p> <p>LIGO VACUUM EQUIPMENT</p> <p>LOUISIANA SITE</p> <p>LEFT BEAM MANIFOLD</p>	<p>CAD FILE V0490022</p> <p>DWG. NO. V049-0-022</p> <p>REV. 3</p>	<p>SCALE NONE</p> <p>SHEET 1 OF 1</p>
---	--	---	---	---	---	---	--	---	---	---	---------------------------------------