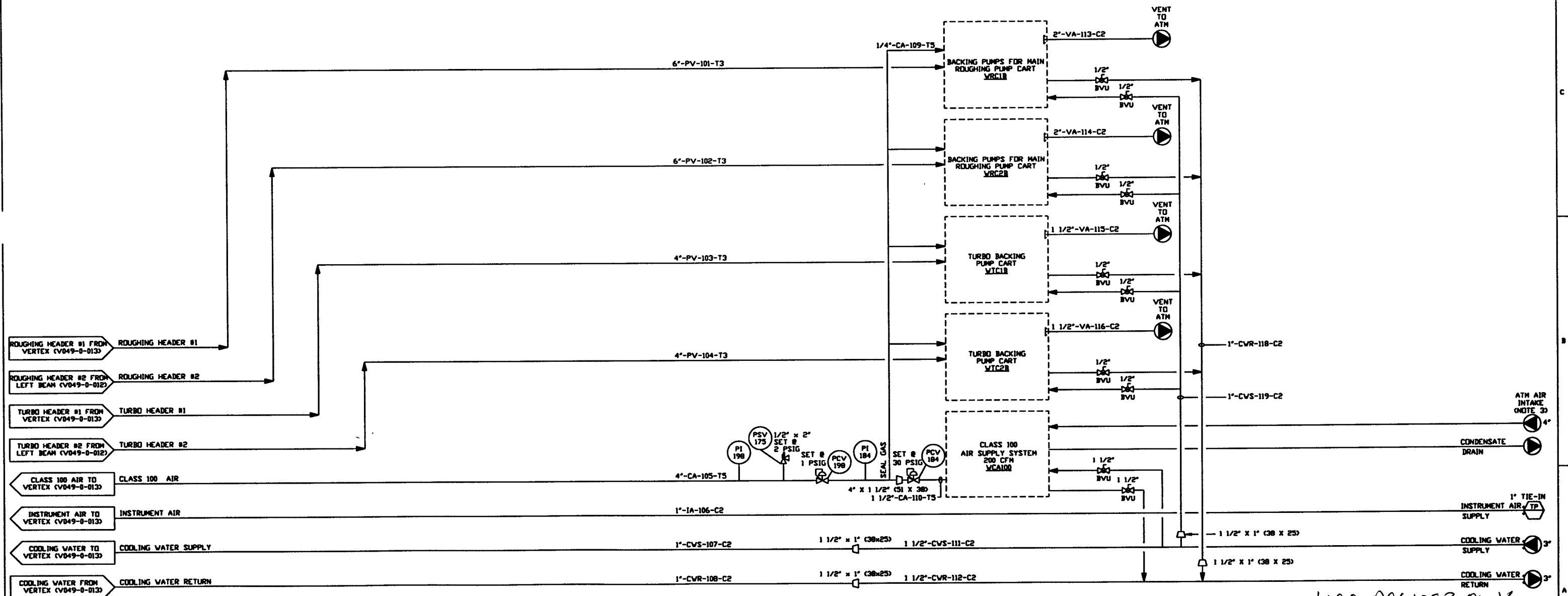


- NOTES:**
1. DIMENSIONS IN () ARE IN MILLIMETERS.
 2. BEAM MANIFOLD DIMENSIONS INDICATE INSIDE DIAMETERS.
 3. ATMOSPHERIC AIR INTAKE SHALL BE LOCATED AWAY FROM SOURCES OF CONTAMINATION.



L100 0961083-01-V

<p>PROCESSES SYSTEMS INTERNATIONAL, INC. 20 WALSH DR. WESTBOROUGH, MASSACHUSETTS 01581 USA</p>		<p>PIPING & INSTRUMENTATION DIAGRAM LIGO VACUUM EQUIPMENT WASHINGTON SITE CORNER STATION MECHANICAL ROOM</p>	
<p>UNLESS OTHERWISE SPECIFIED DIMENSIONS ARE IN INCHES TOLERANCES: FINISHED: ± 0.005 UNFINISHED: ± 0.010 HOLE: ± 0.005 TWO PLACE DECIMAL ± 0.01 THREE PLACE DECIMAL ± 0.005 FINISHED SURFACE AND BREAK CORNERS TO OUR REMOVE ALL BURRS</p>		<p>04.26.96 0134 01.03.96 0031</p>	
<p>DO NOT SCALE THIS DRAWING</p>		<p>ISSUED FOR DESIGN</p>	
<p>USED ON:</p>		<p>ISSUE DESCRIPTION</p>	
<p>REV</p>		<p>DESCRIPTION</p>	
<p>NEXT ASS'Y:</p>		<p>SCALE: NONE SHEET: 1 OF 1</p>	

PROCESSES SYSTEMS INTERNATIONAL, INC.
 DOCUMENT CONTAINS PROPRIETARY INFORMATION BELONGING TO PROCESS SYSTEMS INTERNATIONAL, INC. OR ITS RELATED COMPANIES AND SHALL BE USED ONLY FOR THE PURPOSE FOR WHICH IT WAS SUPPLIED. IT SHALL NOT BE COPIED, REPRODUCED OR OTHERWISE USED, NOR SHALL SUCH INFORMATION BE FURNISHED IN WHOLE OR IN PART TO OTHERS EXCEPT IN ACCORDANCE WITH THE TERMS OF ANY AGREEMENT UNDER WHICH IT WAS SUPPLIED OR WITH THE PRIOR WRITTEN CONSENT OF PROCESS SYSTEMS INTERNATIONAL, INC. AND SHALL BE RETURNED UPON REQUEST.

DWG. NO.	DESCRIPTION	DWG. NO.	DESCRIPTION
V049-0-013	P & ID VERTEX SECTION		
V049-0-001	P & ID LEGEND		

REV	DESCRIPTION	CHKD	DRWN	DATE	DESD
1	ISSUED FOR DESIGN	REB	THS	RT	SM
0	ISSUE FOR DESIGN				