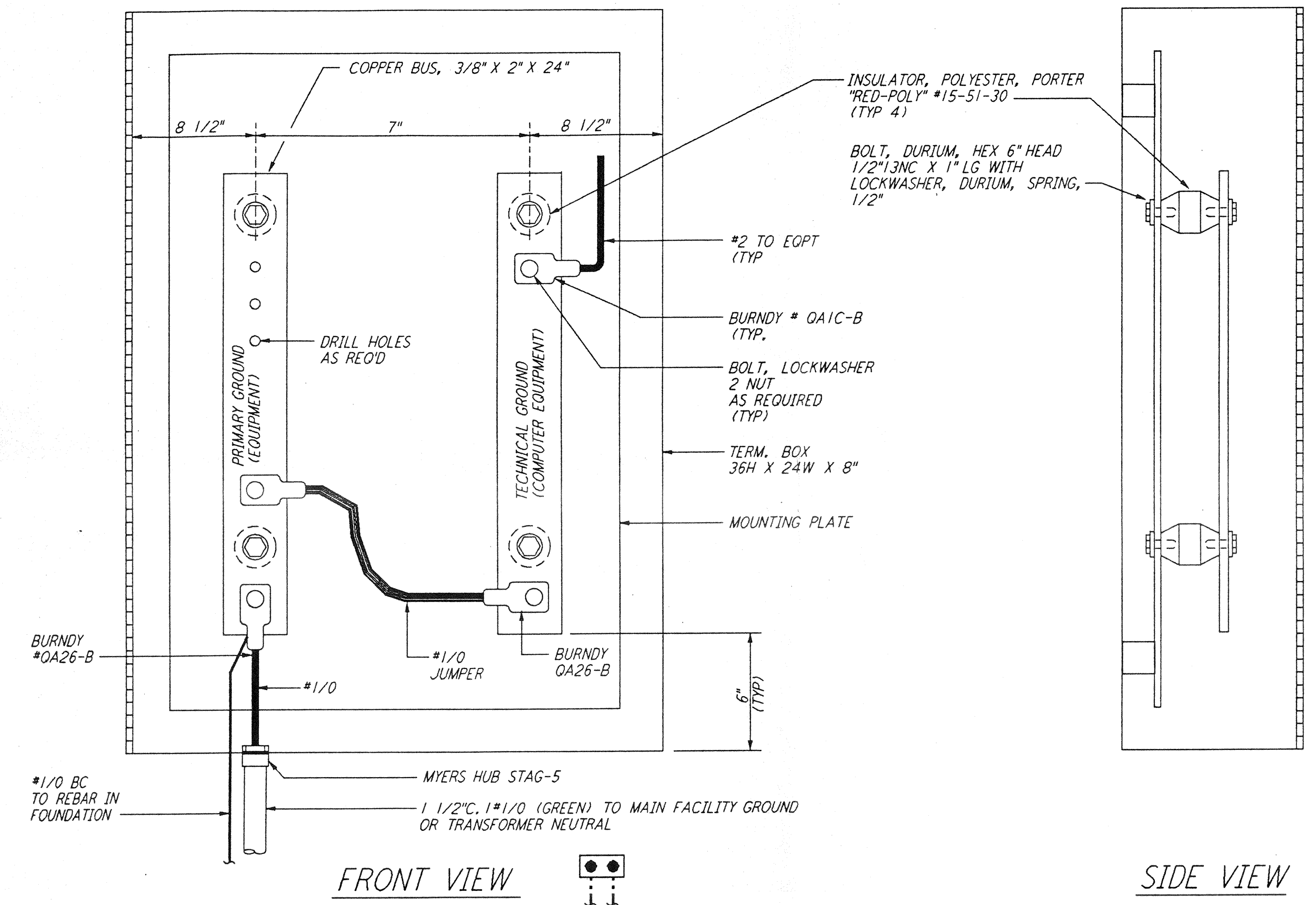
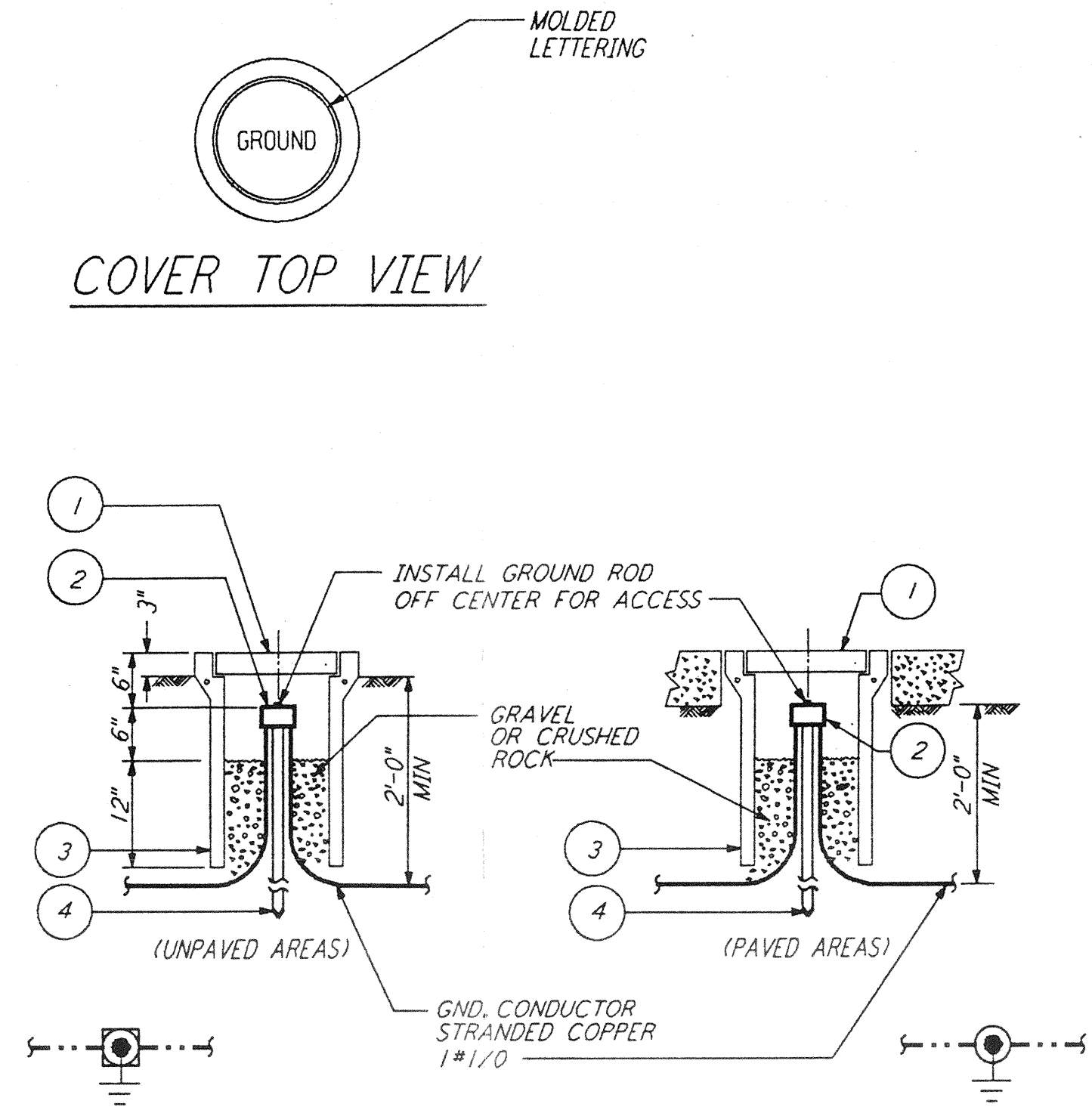


not be reproduced, copied, loaned, exhibited, or used in any other way, except by written consent from PARSONS to the borrower.

This document and the design it covers are the property of PARSONS. They are loaned only with the borrower's expressed written agreement that they will



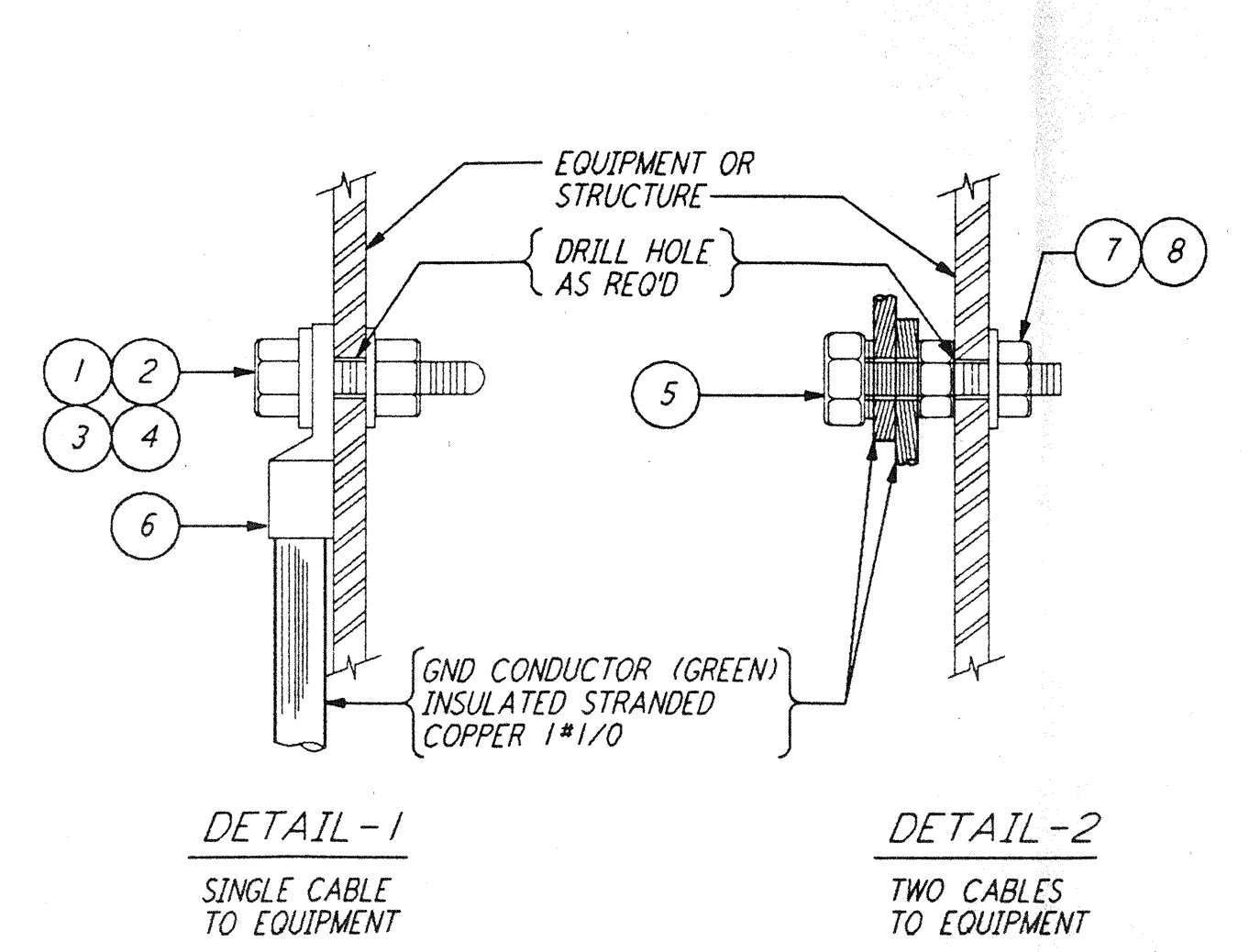
**GROUNDING CONNECTION BOX** (1) REF E-103 E-202 E-208  
 N. T. S.



LIST OF MATERIAL

ITEM NO.	QTY	DESCRIPTION
1	1	BROOKS #9 CONCRETE COVER WT=11 LBS WITH 9 GAGE RE-BAR
2	1	CONNECTOR 3 WIRES X 3/4" GROUND ROD BURNDY #GK6426
3	1	BROOKS #9 BODY (9" DIA X 24" LONG) WT=49 LBS
4	1	GROUND ROD COPPER-CLAD STEEL 5/8" DIA X 10'-0" COPPER WELD

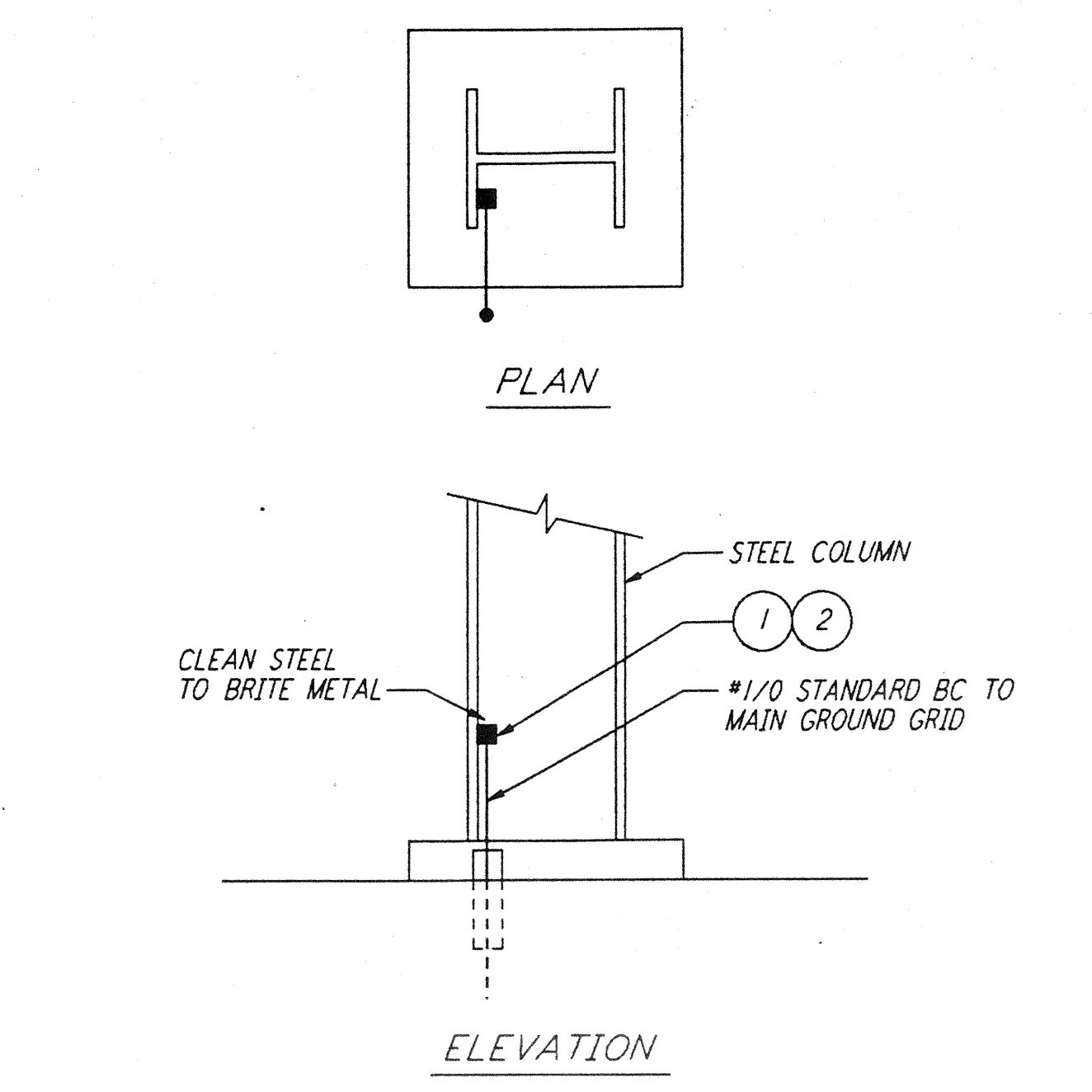
**GROUND WELL** (2) REF E-103 E-112 E-202 E-208  
 N. T. S.



LIST OF MATERIAL

ITEM NO.	QTY	DESCRIPTION
1	1	BOLT, HEX HD SST (SIZE AS RECD)
2	1	NUT, HEX, SST (SIZE AS RECD)
3	1	FLAT WASHER, RD SST (SIZE AS RECD)
4	1	LOCK WASHER, SPRING SST (SIZE AS RECD)
5	1	SERVIT POST, TWO #2-#1/0 WIRES SHORT STUD BURNDY TYPE K2C25
6	1	GND CONNECTOR - STRANDED BURNDY QUICK LUG QA
7	1	NUT, 1/2"-13 HEX DURUM
8	1	LOCKWASHER, 1/2", SPRING, DURUM

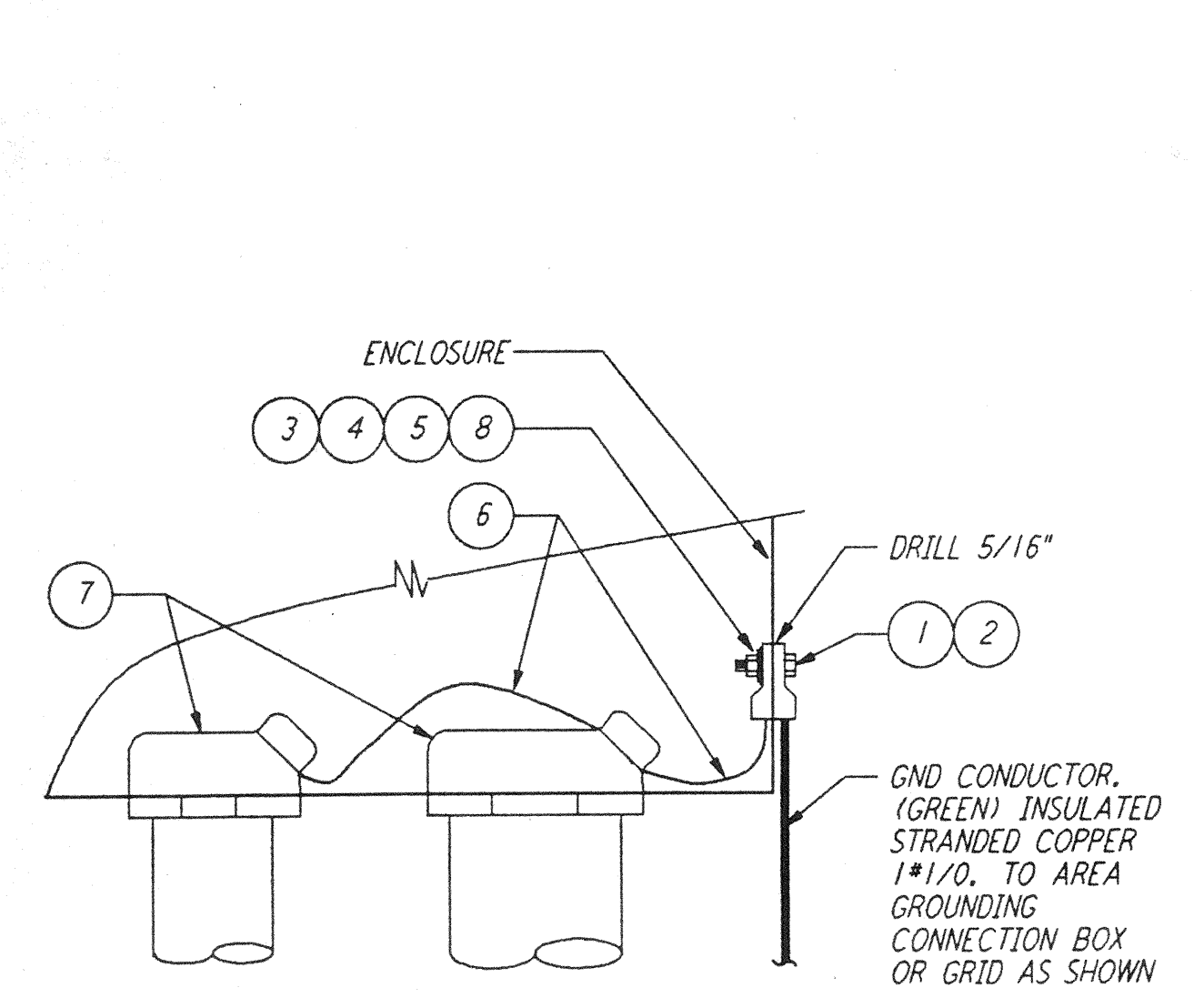
**EQUIPMENT GROUNDING** (3) REF E-202  
 N. T. S.



LIST OF MATERIAL

ITEM NO.	QTY	DESCRIPTION
1	1	CADWELD MOLD #HDVBC-2C
2	1	CARTRIDGE STANDARD POWDER 200 GRAMS

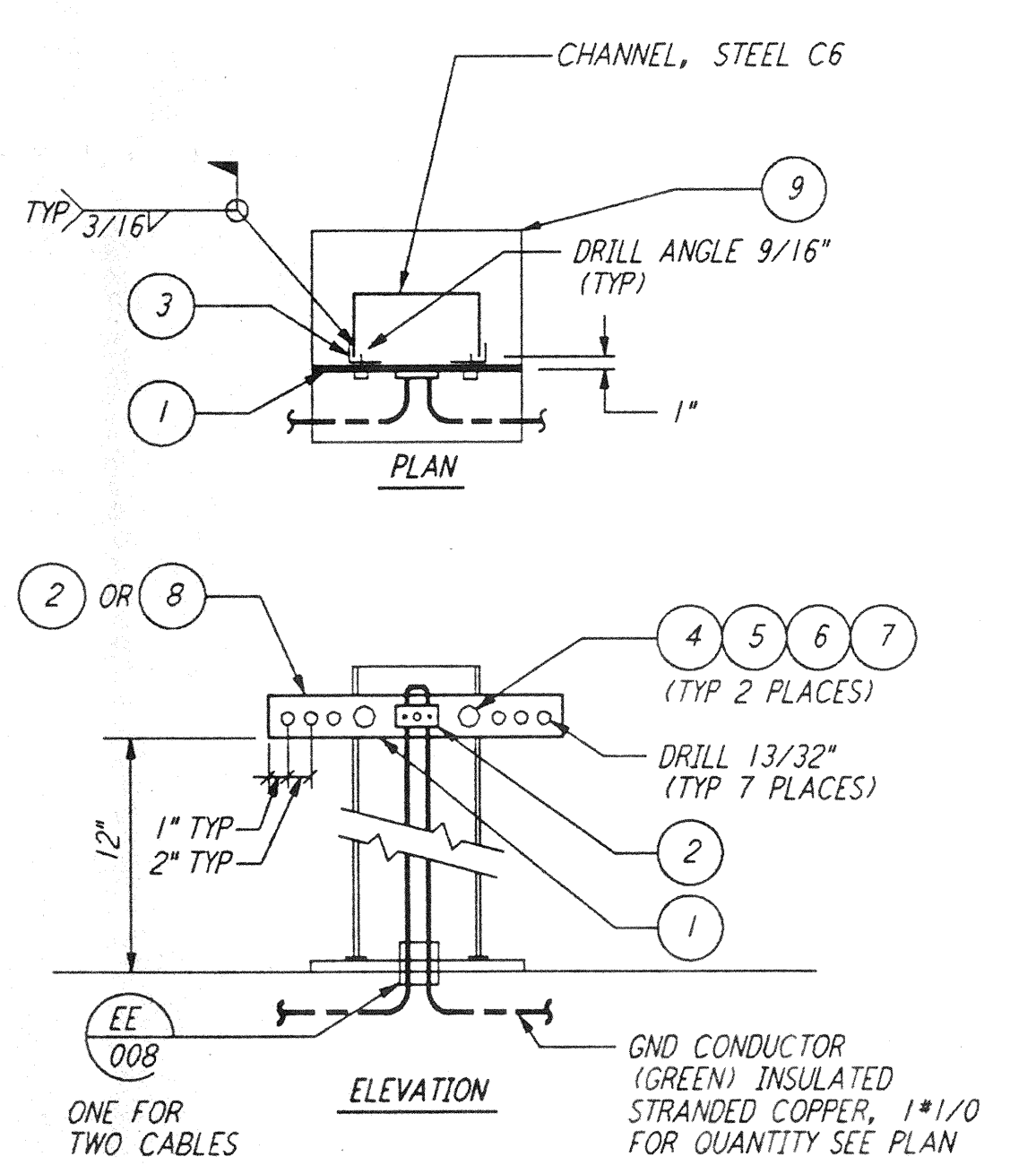
**EXOTHERMIC WELD TO STRUCTURE** (4) REF E-103 E-202 E-208  
 N. T. S.



LIST OF MATERIAL

ITEM NO.	QTY	DESCRIPTION
1	1	LUG, #1/0-#2/0 WIRE X 1/4" BOLT, BURNDY TYPE QA26-B
2	1	BOLT, 1/4"-20 X 1 1/2" LG, HEX HD DURUM
3	1	NUT, 1/4"-20 HEX DURUM
4	1	FLAT WASHER, 1/4" RD DURUM
5	1	LOCKWASHER, 1/4" SPRING DURUM
6	AR	WIRE, #8 THW SOFT DRAWN (GREEN) INSULATED STRANDED CU
7	AR	GROUND HUB, MYERS SERIES STAG SIZE AS RECD
8	1	LUG, #8-#4 STR BURNDY TYPE QILUG QA4C-B

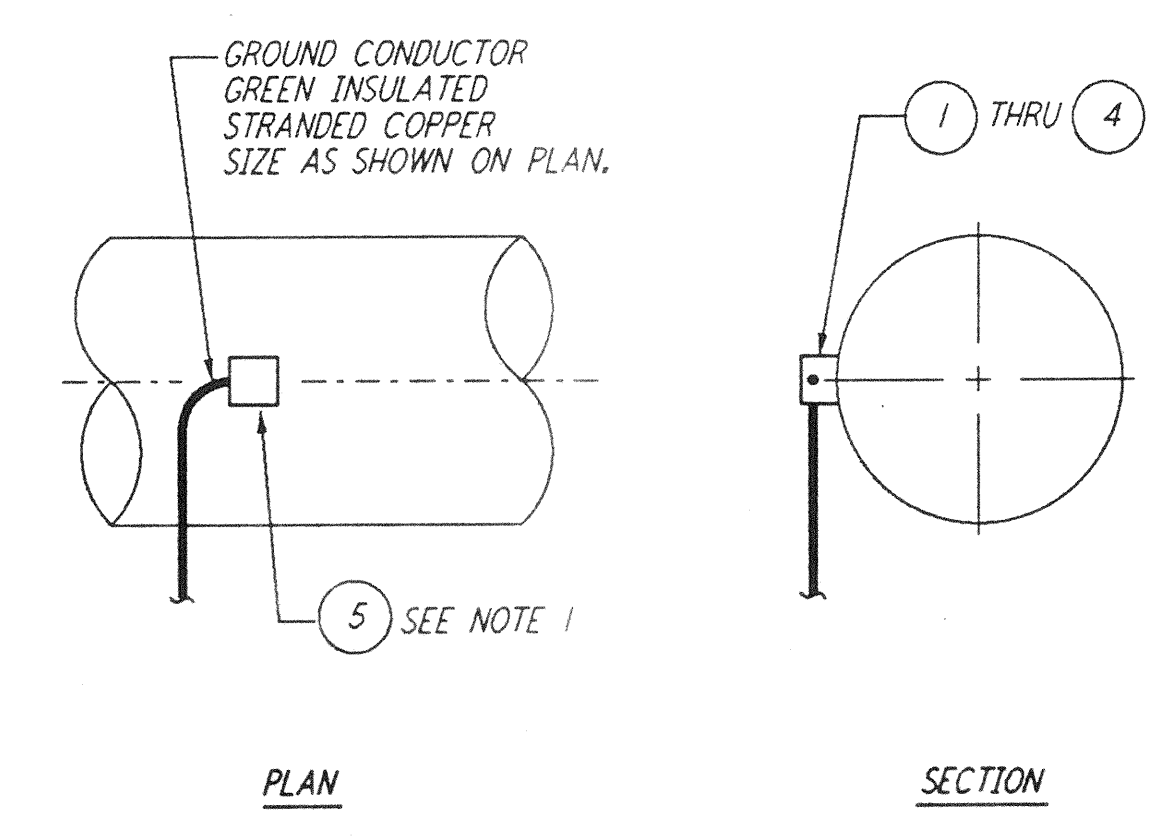
**CABINET OR BOX GROUNDING** (5) REF E-202 E-409  
 N. T. S.



LIST OF MATERIAL

ITEM NO.	QTY	DESCRIPTION
1	1	COPPER BUS, 1/4" X 2" X 18" OR AS RECD.
2	AR	CONN. TWO #4-#2/0 WIRES-FLAT BAR, BURNDY TYPE GCM26
3	2	ANGLE, STEEL 4" X 2" X 1/4" X 2" LG
4	2	BOLT, 1/2"-13 X 1 1/2" LG HEX HD DURUM
5	2	NUT, 1/2"-13 HEX DURUM
6	2	LOCKWASHER, 1/2" SPRING DURUM
7	2	MALLEABLE IRON SQUARE BEVEL WASHER 1/2"
8	AR	CONN. ONE #4-#2/0 WIRES-FLAT BAR, BURNDY TYPE GBM26
9	1	PLATE 1/4" X 8" X 8" GALVANIZED STEEL

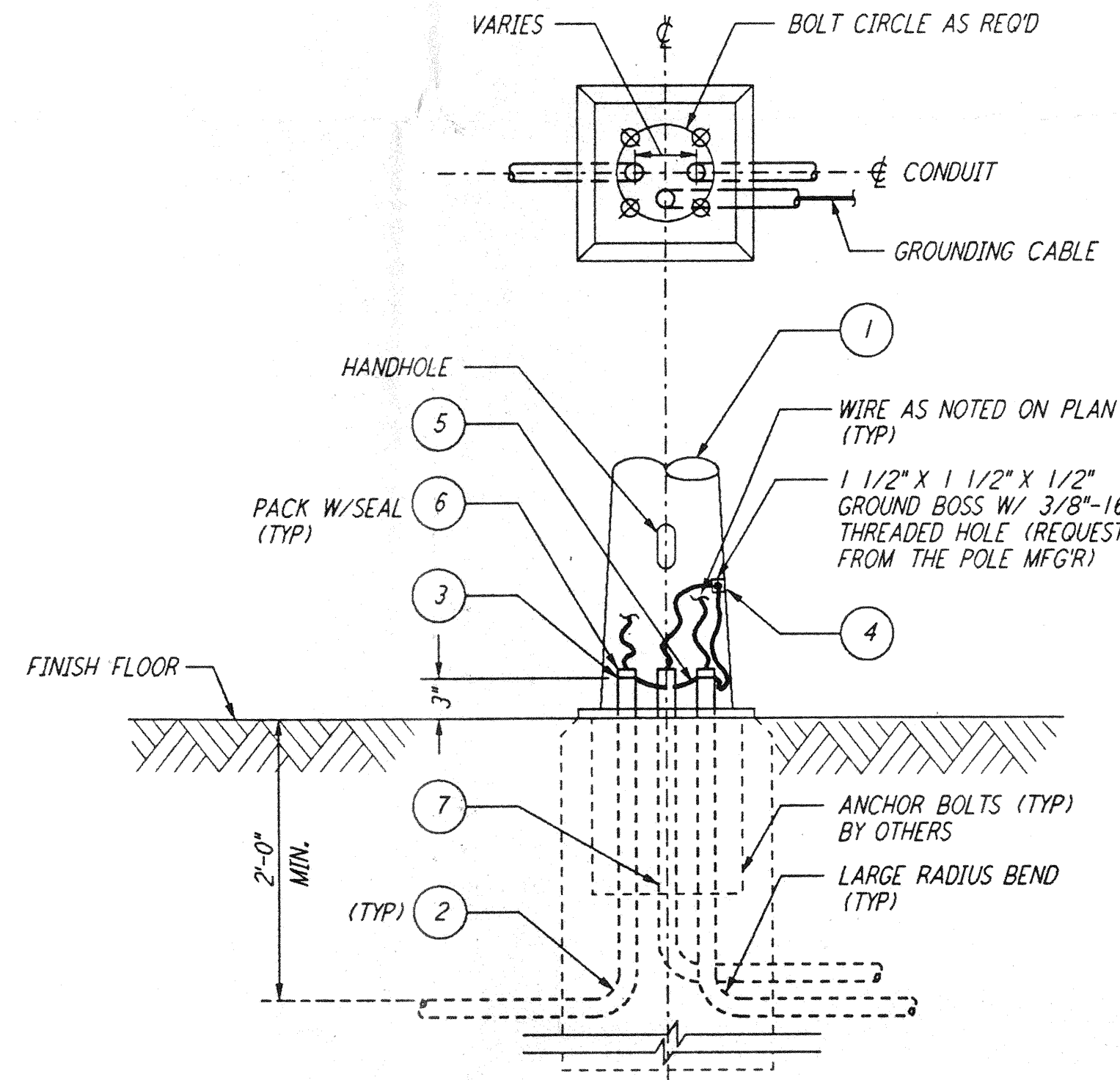
**GROUNDING CONNECTION PLATE** (6) REF E-103 E-112  
 N. T. S.



LIST OF MATERIAL

ITEM NO.	QTY	DESCRIPTION
1	AR	MOLD HORIZ #2/0-4" MAX. PIPE, CADWELD HAH-2G-350C
2	1	CARTRIDGE STANDARD POWDER 90 GRAMS
3	AR	MOLD HORIZ #2/0-10" MAX. PIPE, CADWELD HAH-2G-BC
4	1	CARTRIDGE STANDARD POWDER 90 GRAMS
5	1	COLD GALVANIZE-TUBE, #2RC OR BITUMASTIC

**GROUNDING CONNECTION TO HORIZONTAL STEEL WATER PIPE** (7) REF  
 N. T. S.



LIST OF MATERIAL

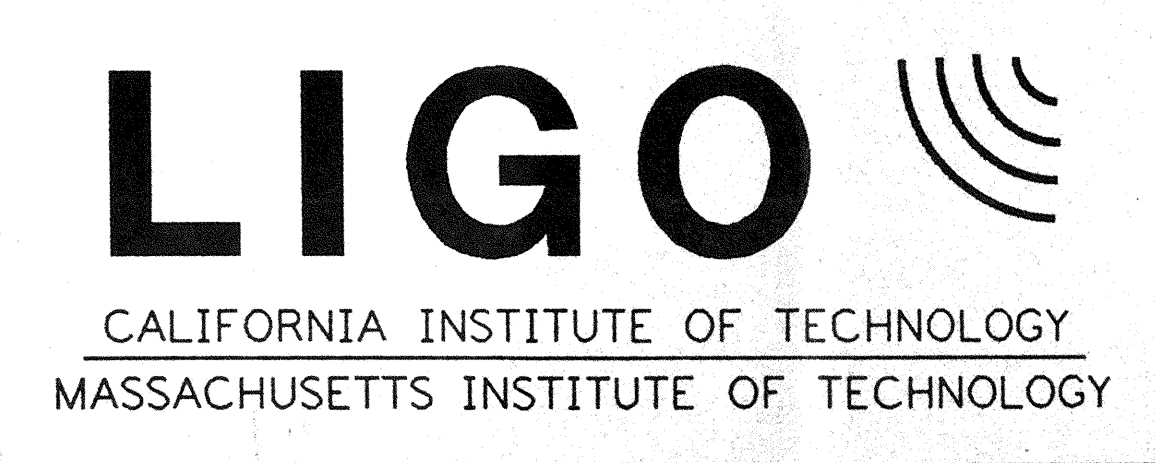
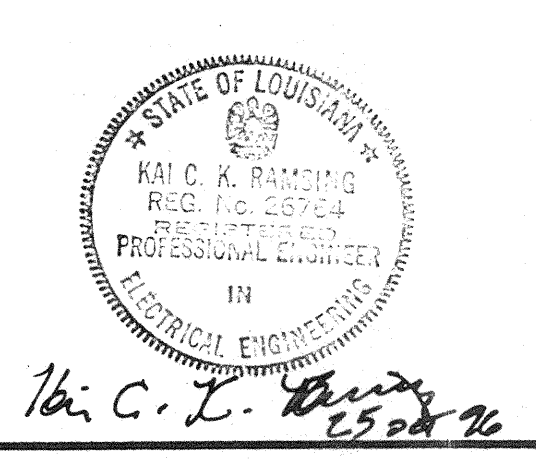
ITEM NO.	QTY	DESCRIPTION
1	1	LIGHTING POLE - AS SPECIFIED
2	AR	CONDUIT, RIGID
3	2	CONDUIT GND BUSHING, #8 WIRE, O.Z. TYPE ABLG
4	1	GND CONN SERVIT POST, BURNDY TYPE K2C23B1
5	3	WIRE, #8 STRANDED CU THW GREEN
6	AR	SEALING COMPOUND, 3M BRAND CP25M/S
7	AR	SCHEDULE 40 PVC 1 1/4" DIA CONDUIT

**LIGHTING STANDARD BASE ASSEMBLY** (8) REF  
 N. T. S.

REFERENCES	REVISIONS	NO.	DATE	BY	CHKD	ENGR	PROJ	DESCRIPTION

ISSUED FOR CONSTRUCTION

DRAWN	M. M.	11-15-96
CHECKED	JCL	7-24-96
ENGINEER	JCR	10-25-96
PROJ	SDA	11/15/96



LASER INTERFEROMETER GRAVITATIONAL-WAVE OBSERVATORY SITE NO. 2 - LIVINGSTON, LOUISIANA

TITLE	SCALE	CONTRACT NUMBER	PROJECT NUMBER
ELECTRICAL GROUNDING DETAILS SHEET 2	NONE	PP150969	8094
SHEET NUMBER	LA-E-406		REVISIONS

L160-0961042-00-0