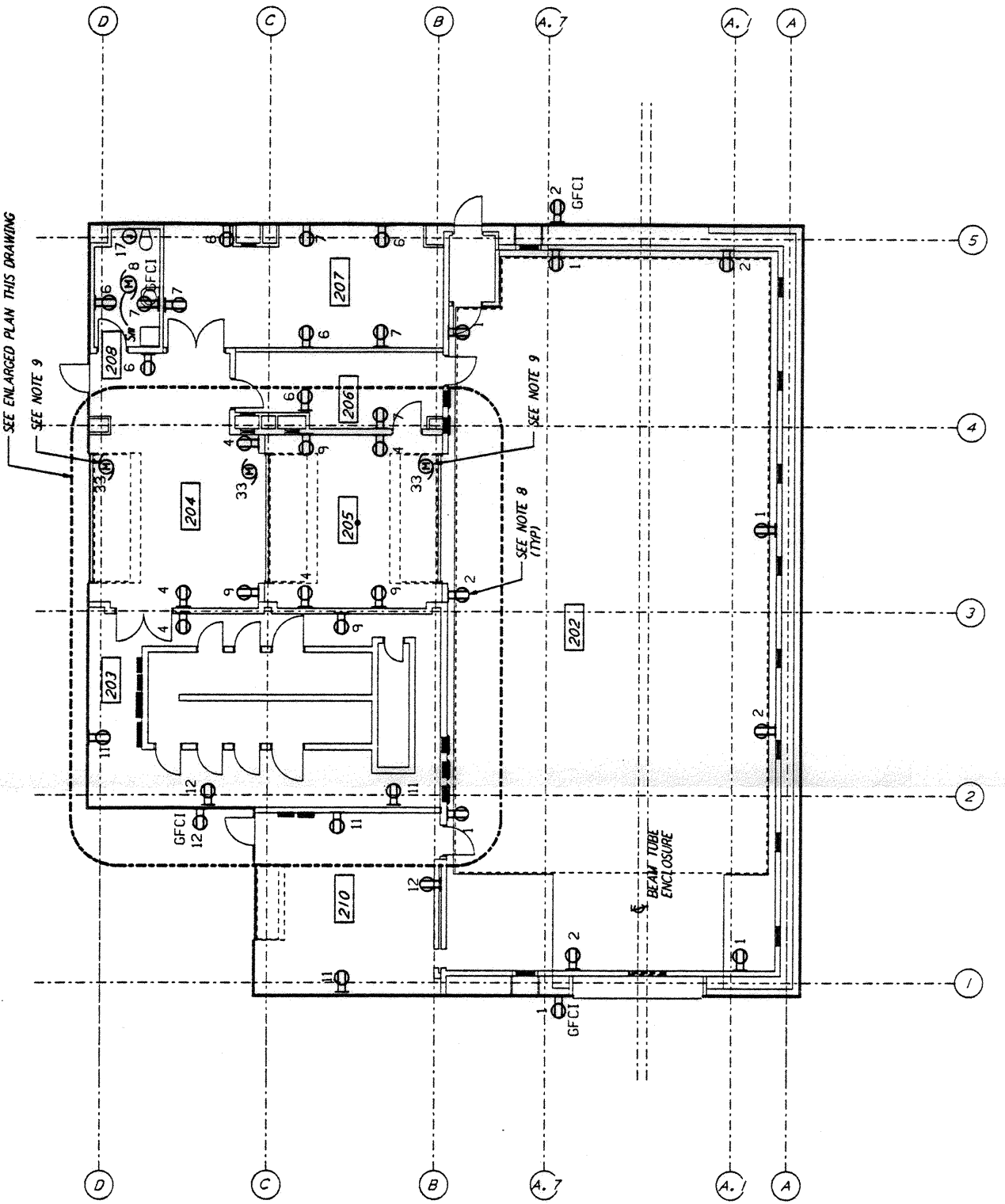
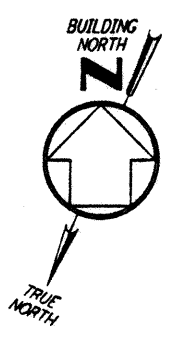
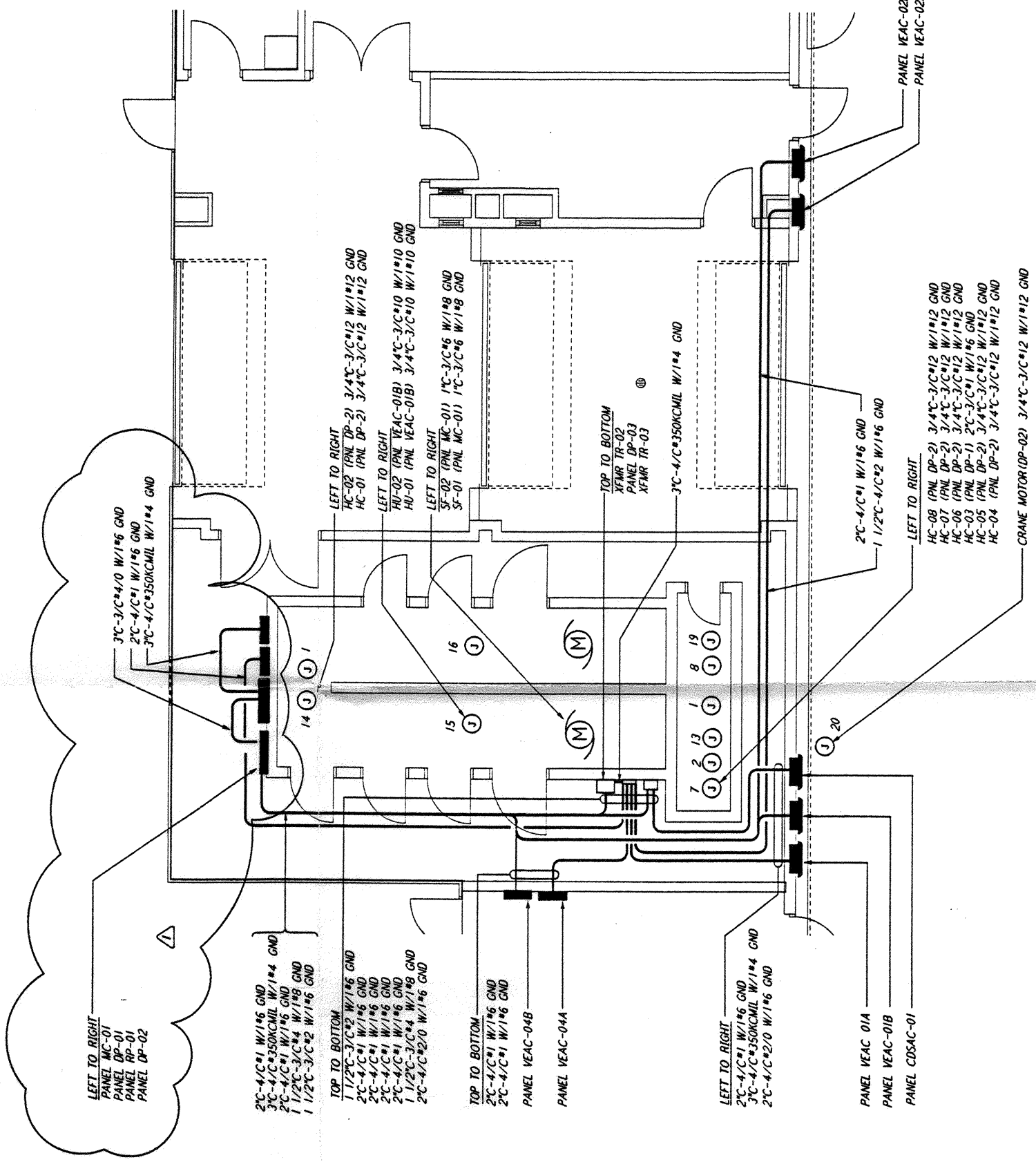


**NOTES:**

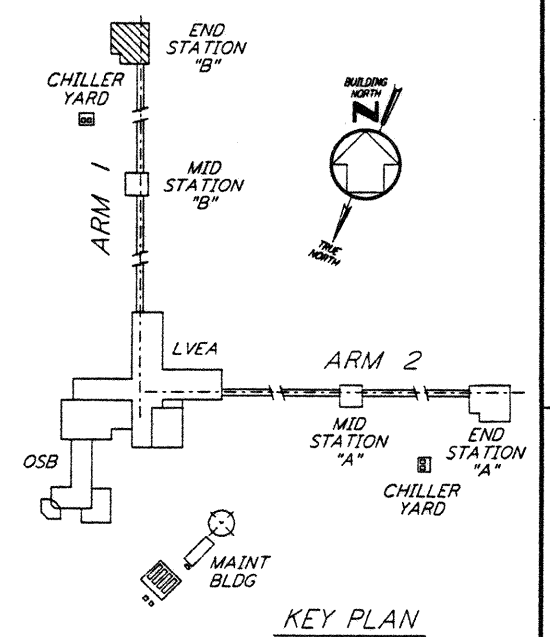
1. FOR STANDARD SYMBOLS, ABBREVIATIONS AND ACRONYMS SEE DWG. LA-E-001.
2. FOR ELECTRICAL SYMBOLS SEE DWG. LA-E-002.
3. FOR STANDARD INSTALLATION DETAILS SEE DWG. LA-E-404 AND LA-E-409.
4. FOR CABLE TYPE DESCRIPTION SEE DWG. LA-E-007.
5. ALL CONDUIT RUNS ARE SHOWN DIAGRAMMATICALLY ONLY, CONTRACTOR SHALL COORDINATE INSTALLATION WITH OTHER DISCIPLINES.
6. FOR SINGLE LINE DIAGRAM, SEE DWG. LA-E-008.
7. FOR EQUIPMENT LOCATION, SEE HVAC DWG. LA-H-211.
8. ALL CIRCUITS SHOWN ON THIS DRAWING ARE FROM PANEL RPO1 UNLESS OTHERWISE NOTED.
9. CIRCUIT SHOWN FEEDING THESE ITEMS ARE FROM DP-02.
10. PANEL SCHEDULES ARE SHOWN ON DRAWINGS LA-E-205 AND LA-E-206.



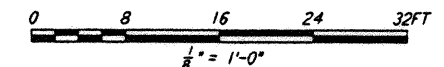
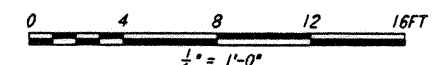
**POWER PLAN**  
 1/8" = 1'-0"



**ENLARGED PLAN**  
 1/4" = 1'-0"



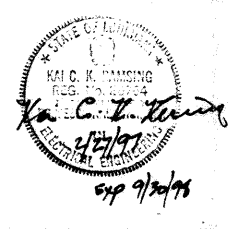
**KEY PLAN**



LIGO-D961035-01-0

NO.	DATE	BY	CHKD	ENGR	PROJ	DESCRIPTION
1	2-28-97	J. G.	J. G.	J. G.	J. G.	GENERAL REVISIONS TN116=11-15-96

ISSUED FOR CONSTRUCTION	DATE	BY
DRAWN	M. M.	11-15-96
CHECKED	J. C. L.	7-24-96
ENGINEER	K. C. R.	10-25-96
PROJ	T. D. M.	11-15-96



**PARSONS**  
 100 WEST WALNUT STREET  
 PASADENA, CALIFORNIA

**LIGO**  
 CALIFORNIA INSTITUTE OF TECHNOLOGY  
 MASSACHUSETTS INSTITUTE OF TECHNOLOGY

LASER INTERFEROMETER  
 GRAVITATIONAL-WAVE OBSERVATORY  
 SITE NO. 2 - LIVINGSTON, LOUISIANA

ELECTRICAL  
 END STATION B  
 ABOVEGROUND POWER PLAN

ASNOTED PPI50969 8094  
**LA-E-214**

This document and the design it covers are the property of PARSONS. They are loaned only with the borrower's expressed written agreement that they will not be reproduced, copied, loaned, exhibited, or used in any other way, except by written consent from PARSONS to the borrower.

I:\ED 27 1451223 1371 5373002 J:\V\L\UIS\SUB\1633\U\006\EE\214\PT

I:\ED 27 1451223 1371 5373002 J:\V\L\UIS\SUB\1633\U\006\EE\214\PT