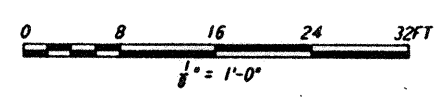
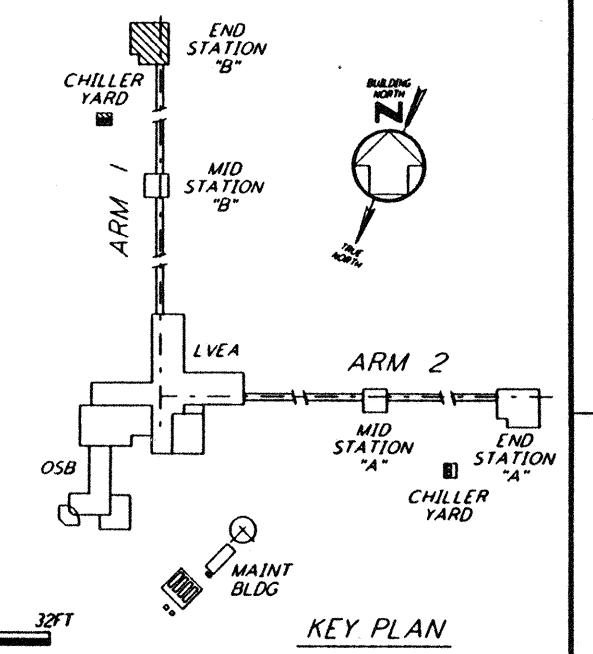
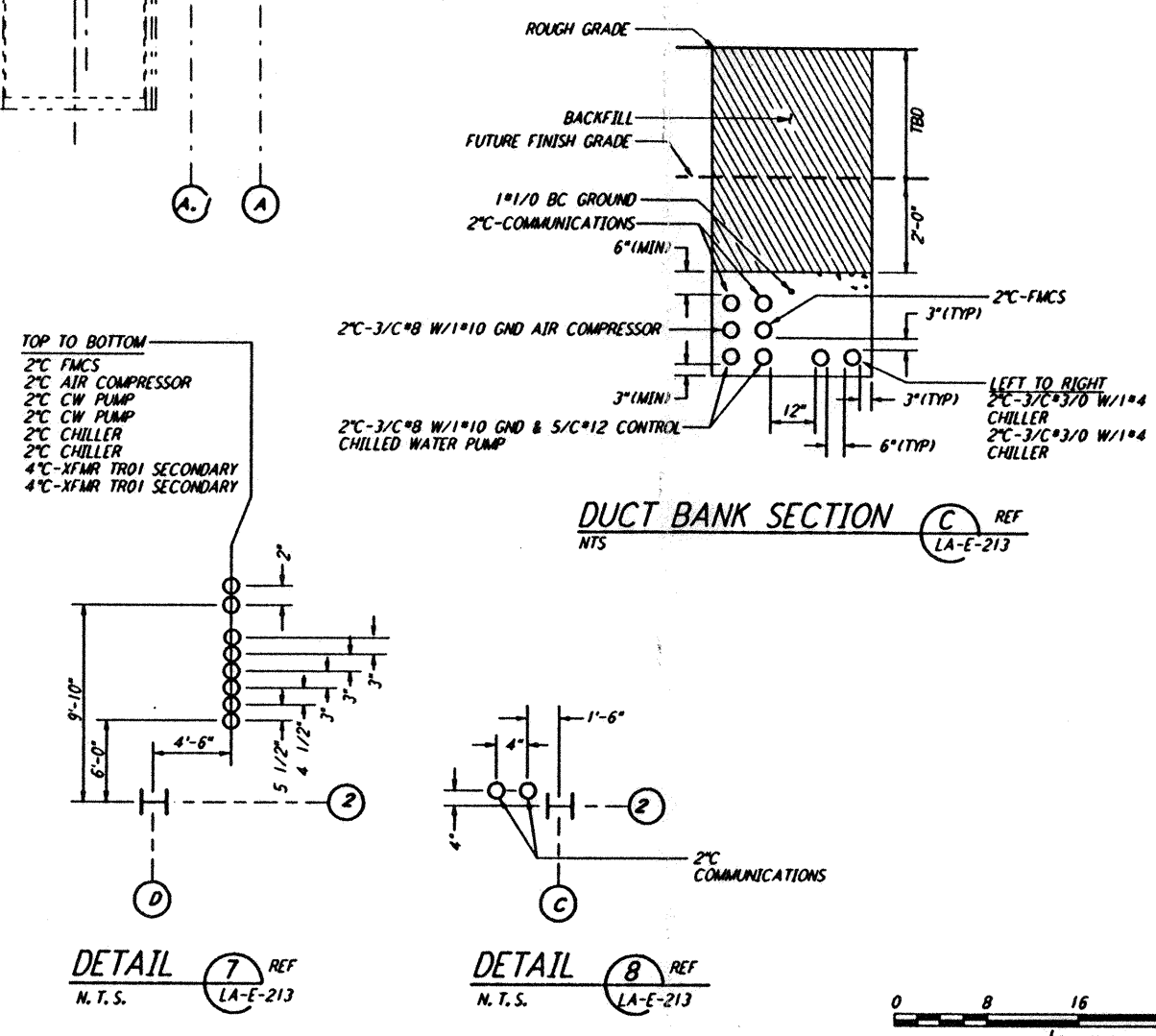
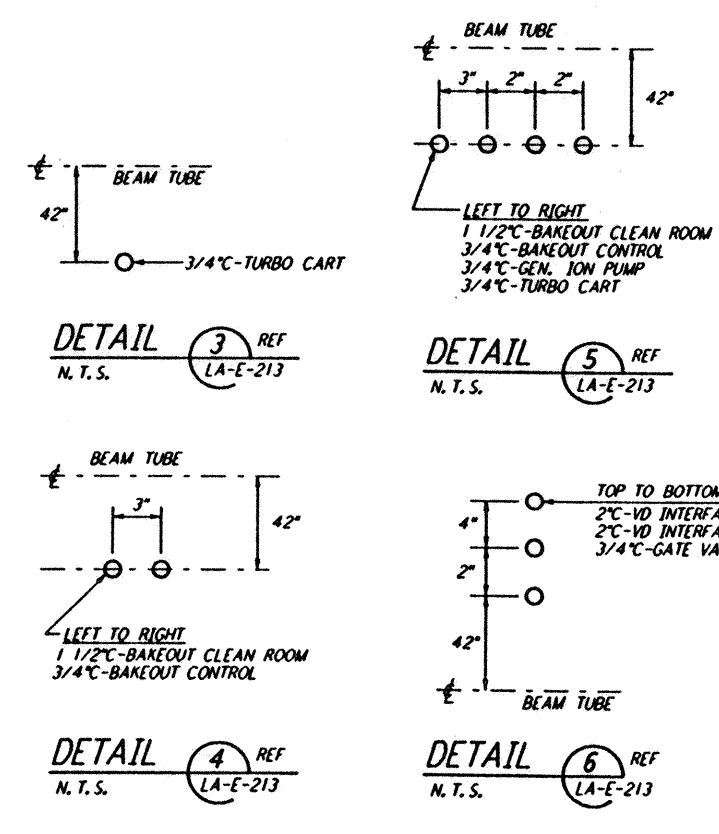
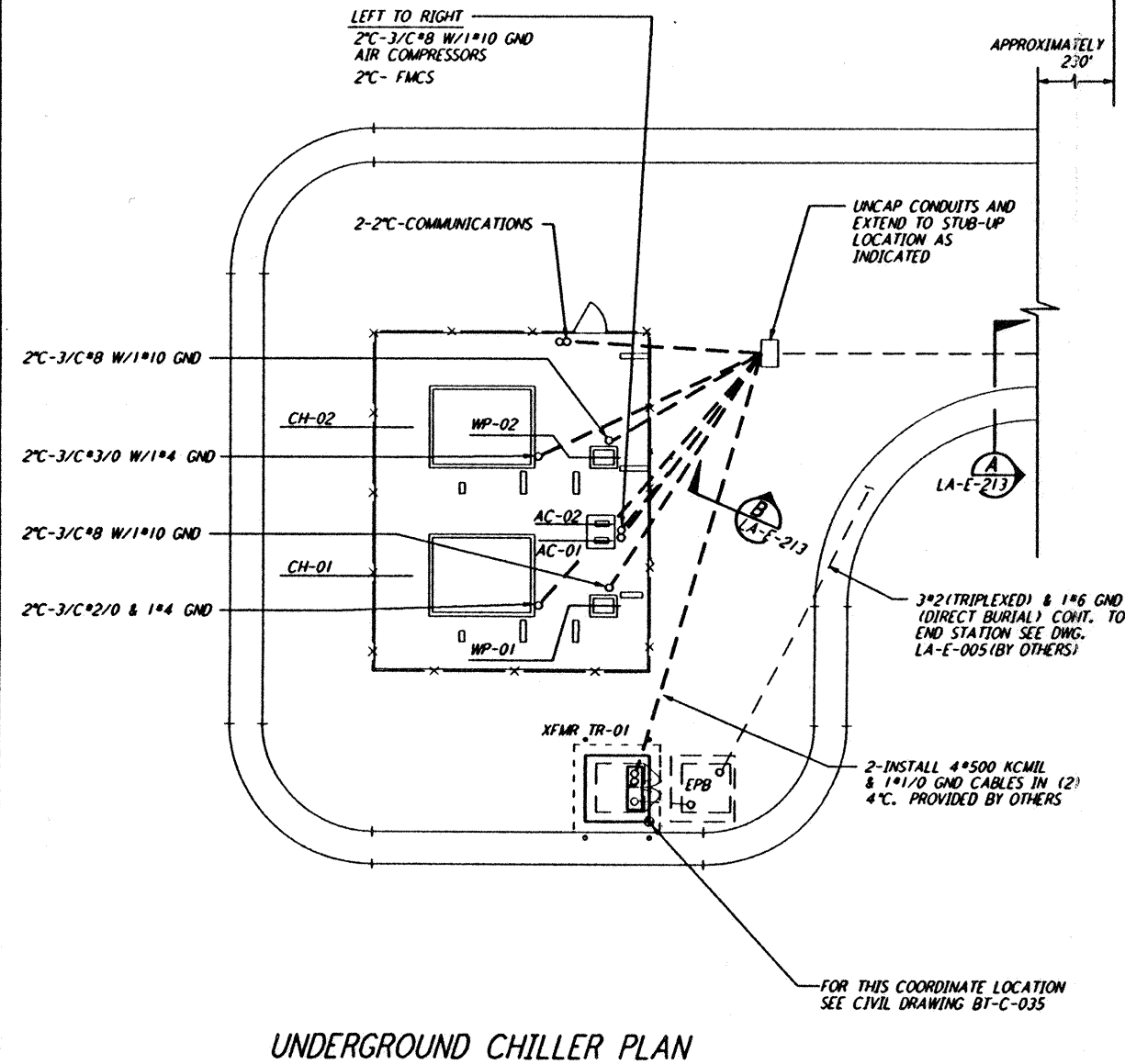
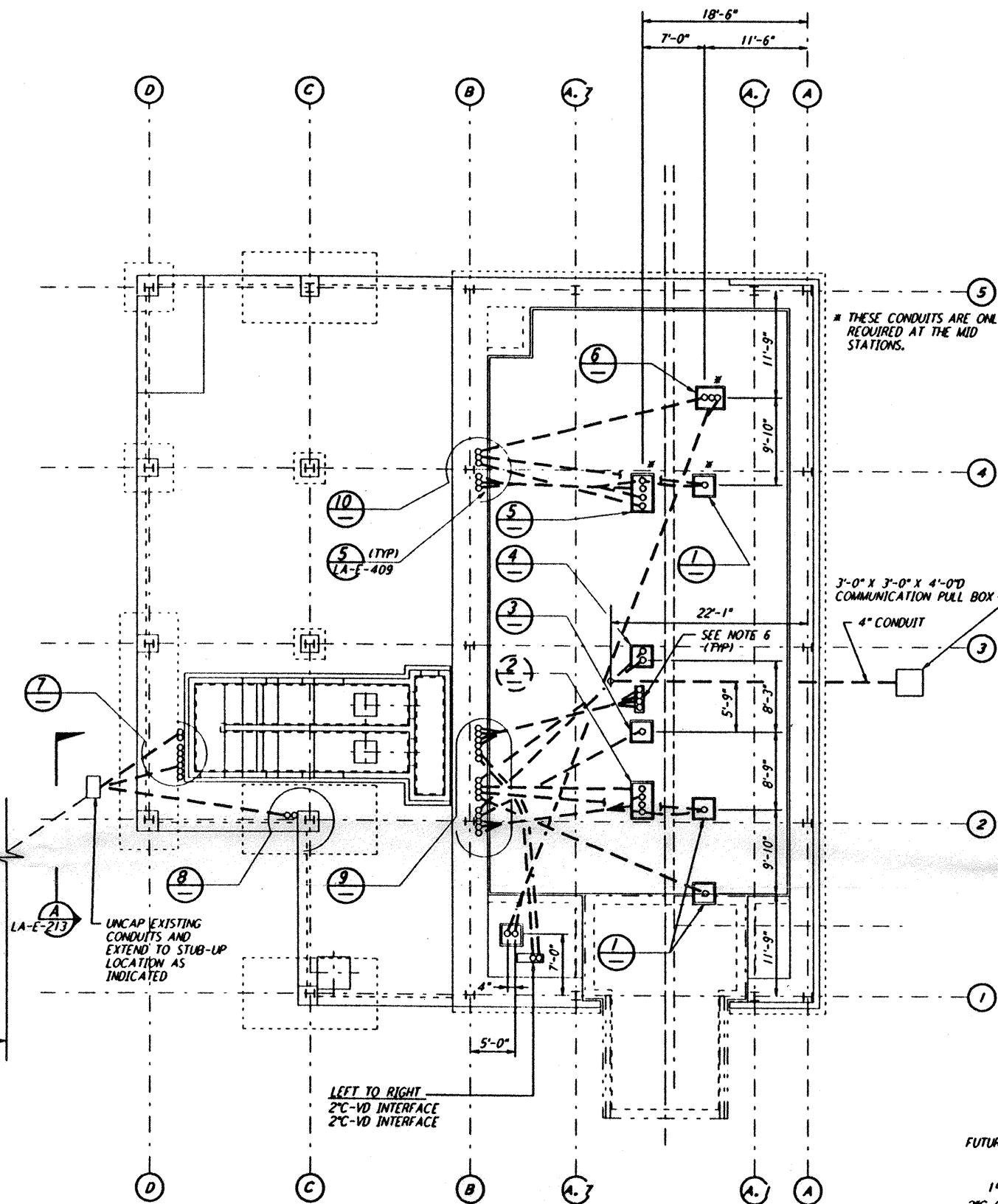
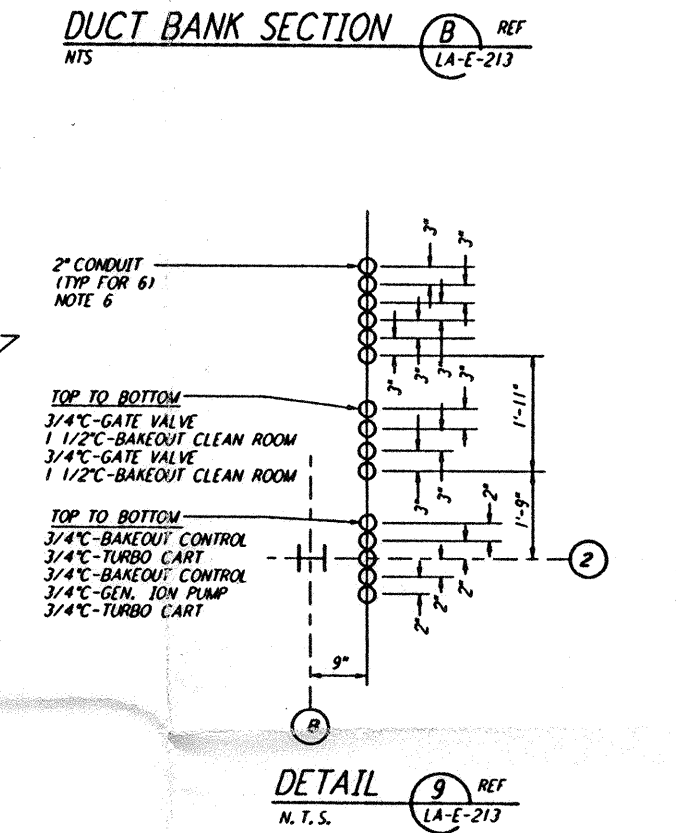
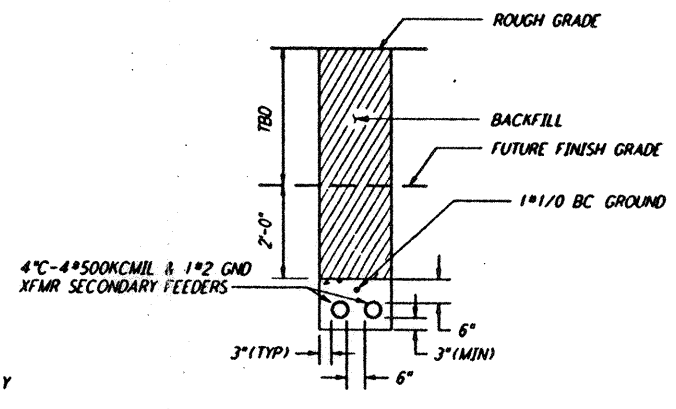
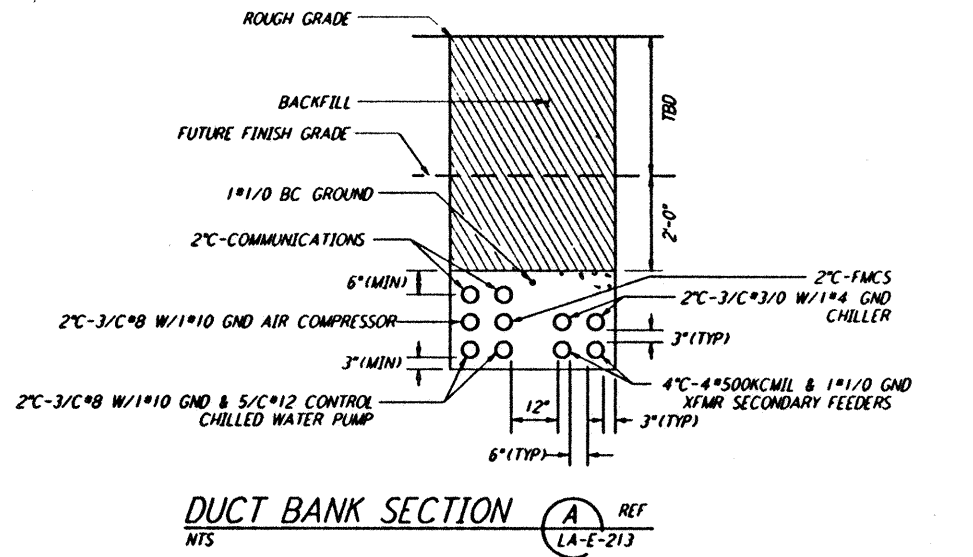
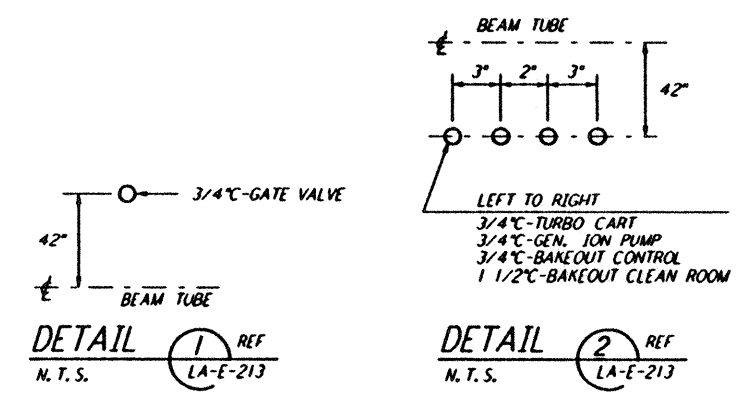
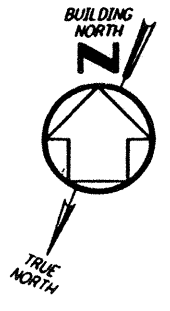


- NOTES:**
- FOR STANDARD SYMBOLS, ABBREVIATIONS AND ACRONYMS SEE DWG. LA-E-001.
 - FOR ELECTRICAL SYMBOLS SEE DWG. LA-E-002.
 - FOR STANDARD INSTALLATION DETAILS SEE DWG. LA-E-405 THRU LA-E-407.
 - FOR CABLE TYPE DESCRIPTION SEE DWG. LA-E-007.
 - ALL DUCTBANK RUNS ARE SHOWN DIAGRAMMATICALLY ONLY. CONTRACTOR SHALL COORDINATE INSTALLATION WITH OTHER DISCIPLINES, TO USE COMMON TRENCH, BACK FILL, ETC.
 - ARRANGEMENT OF CDS POWER CONDUIT SUB-UPS SHALL BE COORDINATED WITH THE VACUUM EQUIPMENT VENDOR.



NO.	DATE	BY	CHKD	ENGR	PROJ	DESCRIPTION
B	7-24-96	MM	JCL	AKR	AKM	ISSUED FOR BID
A	6-14-96	MM	JCL	AKR	TDM	FINAL DESIGN REVIEW

DRAWN	MM
CHECKED	AKM
ENGINEER	
PROJ	

PARSONS
 100 WEST WALNUT STREET
 PASADENA, CALIFORNIA

LIGO
 CALIFORNIA INSTITUTE OF TECHNOLOGY
 MASSACHUSETTS INSTITUTE OF TECHNOLOGY

LASER INTERFEROMETER
 GRAVITATIONAL-WAVE OBSERVATORY
 SITE NO. 2 - LIVINGSTON, LOUISIANA

ELECTRICAL
 END STATION B
 UNDERGROUND
 PLAN

SCALE: AS NOTED
 CONTRACT NUMBER: PPI50969
 PROJECT NUMBER: 8094

LA-E-213

LIGO-D961034-B-0

LIGOLAF 3.BDR

This document and the design it covers are the property of PARSONS. They are loaned only with the borrower's expressed written agreement that they will not be reproduced, copied, loaned, exhibited, or used in any other way, except by written consent from PARSONS to the borrower.

Tue Jul 23 20:28:25 1996 S3-V18B2 J:\PLOTS\QUEUES\V18B2\E213.PRF