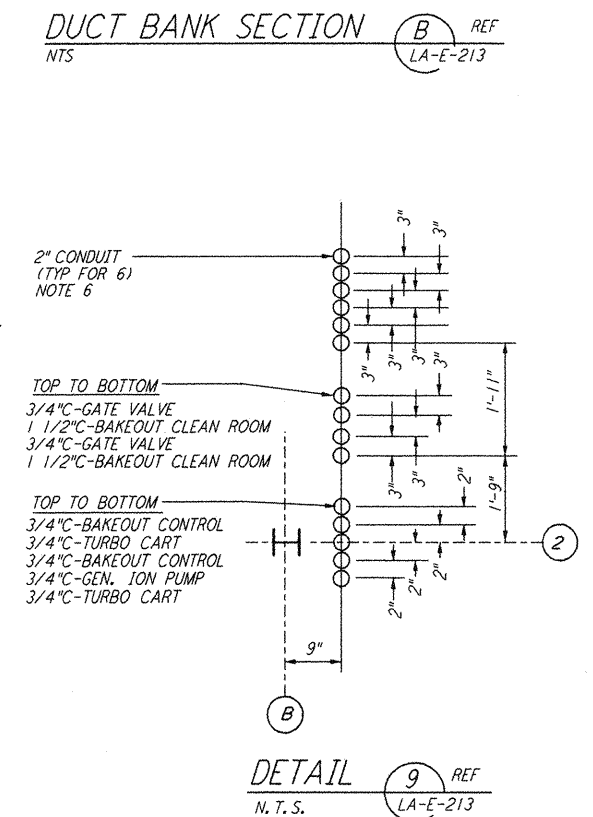
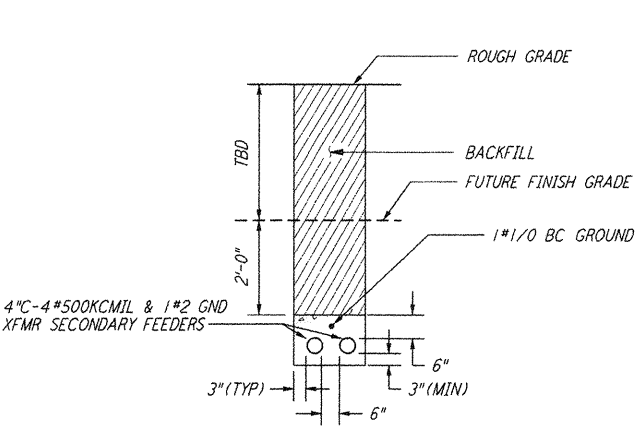
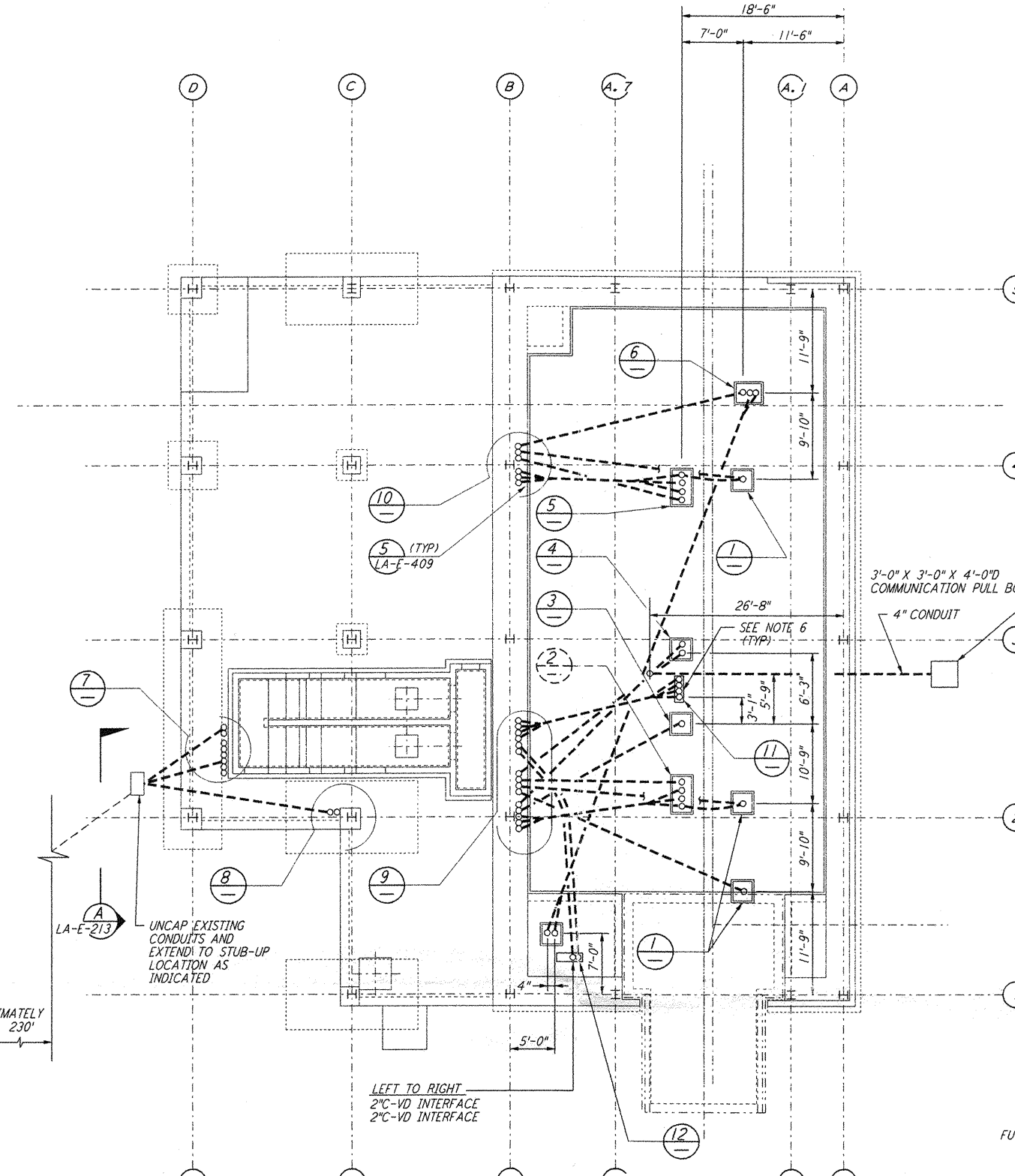
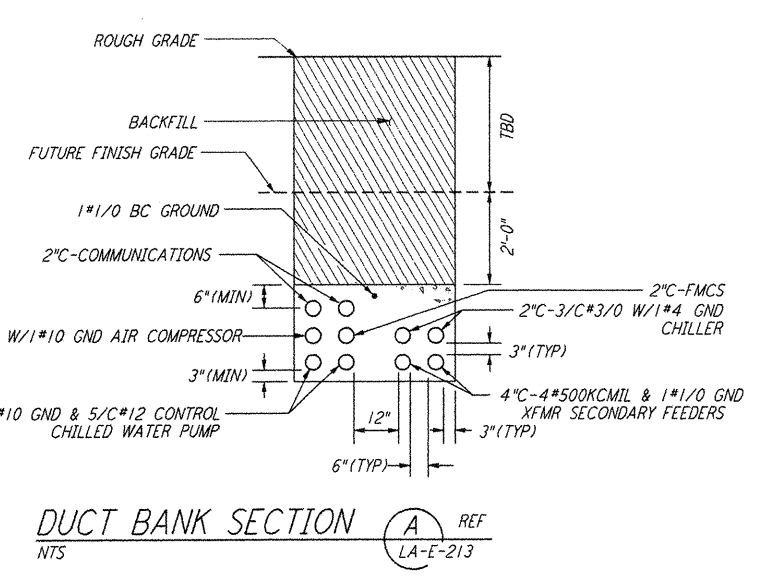
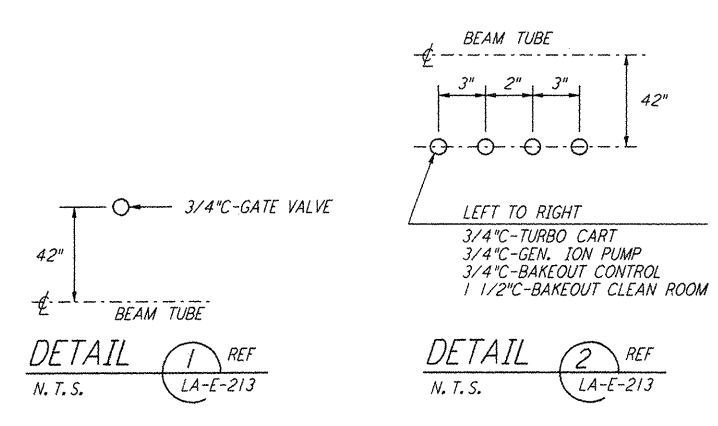
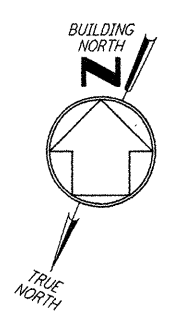
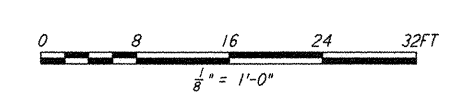
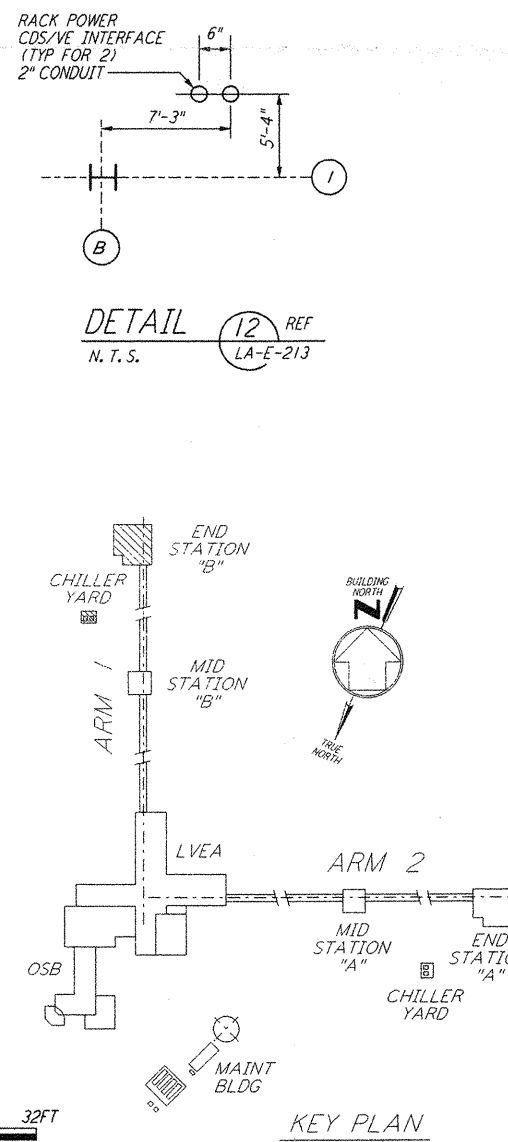
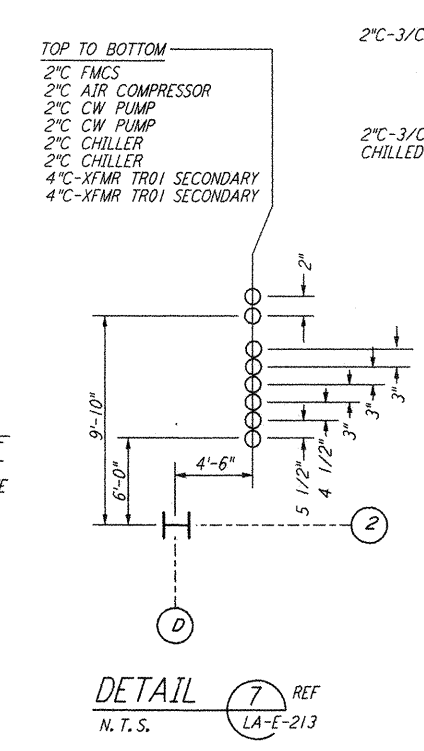
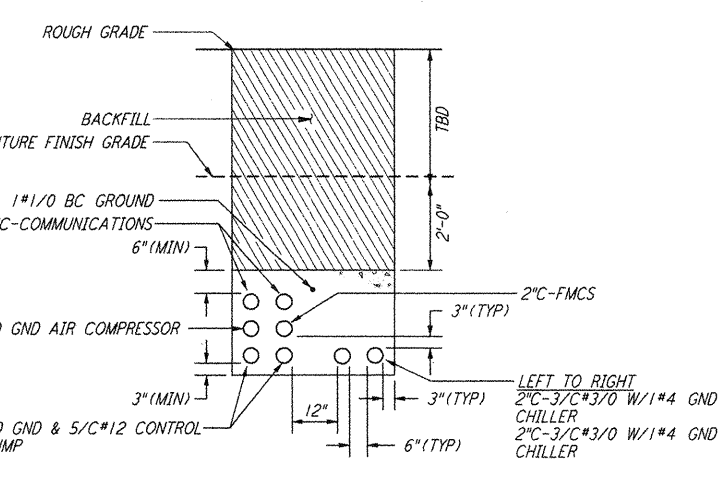
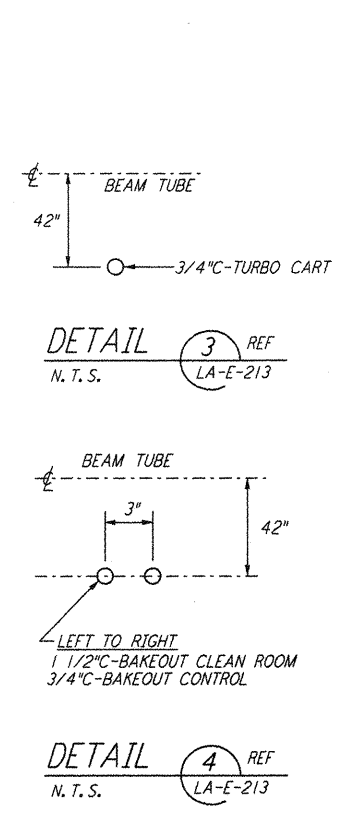
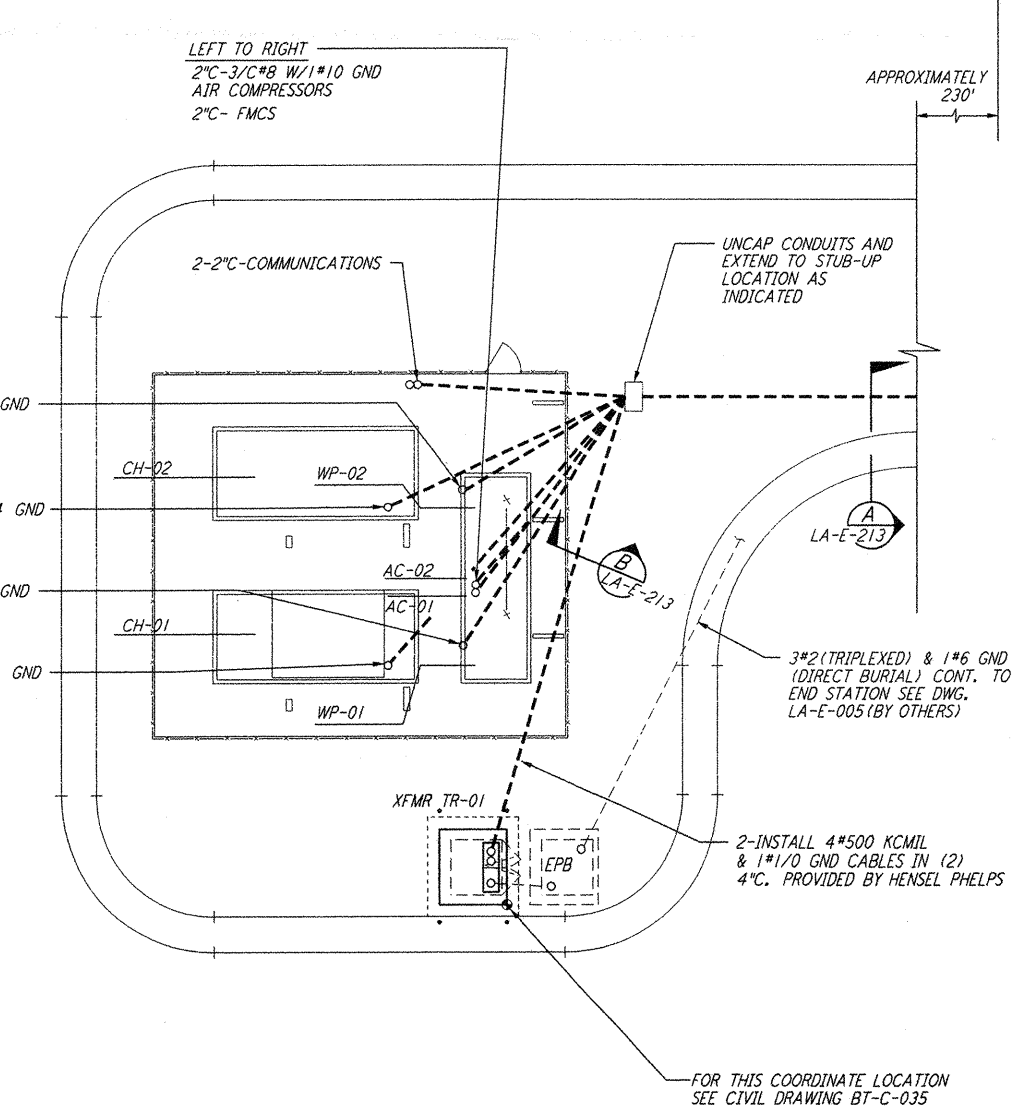
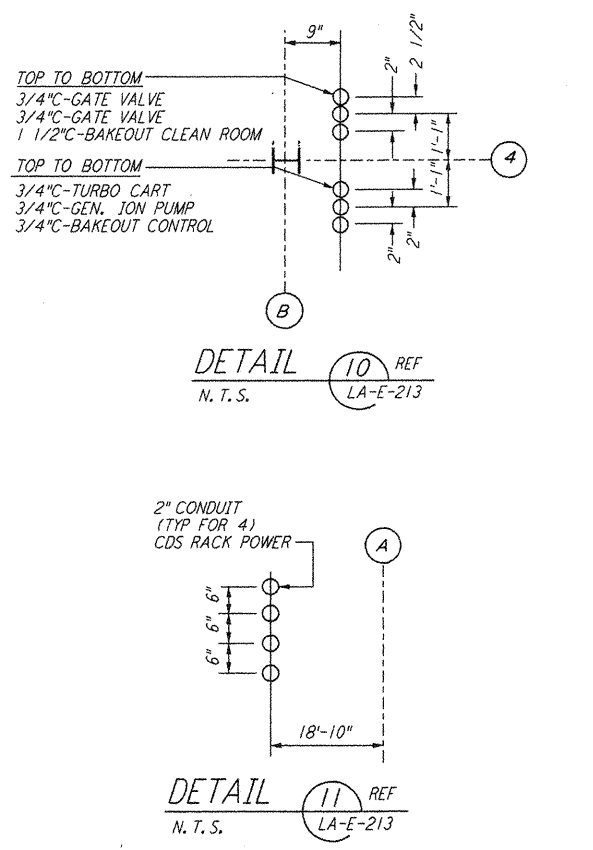


5 4 3 2



- NOTES:**
- FOR STANDARD SYMBOLS, ABBREVIATIONS AND ACRONYMS SEE DWG. LA-E-001.
  - FOR ELECTRICAL SYMBOLS SEE DWG. LA-E-002.
  - FOR STANDARD INSTALLATION DETAILS SEE DWG. LA-E-405 THRU LA-E-407.
  - FOR CABLE TYPE DESCRIPTION SEE DWG. LA-E-007.
  - ALL DUCTBANK RUNS ARE SHOWN DIAGRAMMATICALLY ONLY. CONTRACTOR SHALL COORDINATE INSTALLATION WITH OTHER DISCIPLINES. TO USE COMMON TRENCH, BACK FILL ETC.
  - ARRANGEMENT OF CDS POWER CONDUIT STUB-UPS SHALL BE COORDINATED WITH THE VACUUM EQUIPMENT VENDOR.



UNDERGROUND CHILLER PLAN

LIGO-D961034-03-0

NO.	DATE	BY	CHKD	ENGR	PROJ	DESCRIPTION
3	8-7-98	JE	OK	KR	T.D.M.	ISSUED FOR AS-BUILT
2	4-4-97	JG	KR	KR	T.D.M.	REVISED DIMENSION
1	3-17-97	J.G.	TDM	KR	T.D.M.	REVISED VACUUM EQUIP. LOCATIONS

ISSUED FOR CONSTRUCTION	DATE
DRAWN	M.M. 11-15-96
CHECKED	J.C.L. 7-24-96
ENGINEER	K.C.R. 10-25-96
PROJ	T.D.M. 11-15-96

**PARSONS**  
 100 WEST WALNUT STREET  
 PASADENA, CALIFORNIA

**LIGO**  
 CALIFORNIA INSTITUTE OF TECHNOLOGY  
 MASSACHUSETTS INSTITUTE OF TECHNOLOGY

LASER INTERFEROMETER GRAVITATIONAL-WAVE OBSERVATORY SITE NO. 2 - LIVINGSTON, LOUISIANA	
TITLE	ELECTRICAL END STATION B UNDERGROUND PLAN
SCALE	AS NOTED
CONTRACT NUMBER	PP150969
PROJECT NUMBER	8094
<b>LA-E-213</b>	

This document and the design it covers are the property of PARSONS. They are loaned only with the borrower's expressed written agreement that they will not be reproduced, copied, loaned, exhibited, or used in any other way, except by written consent from PARSONS to the borrower.

Thu Aug 27 14:57:43 1998 C:\PLOT\JOBES\93-19862.DWG 420895 K:\V\8682\we213.plt LIGOL.AF3.BDR