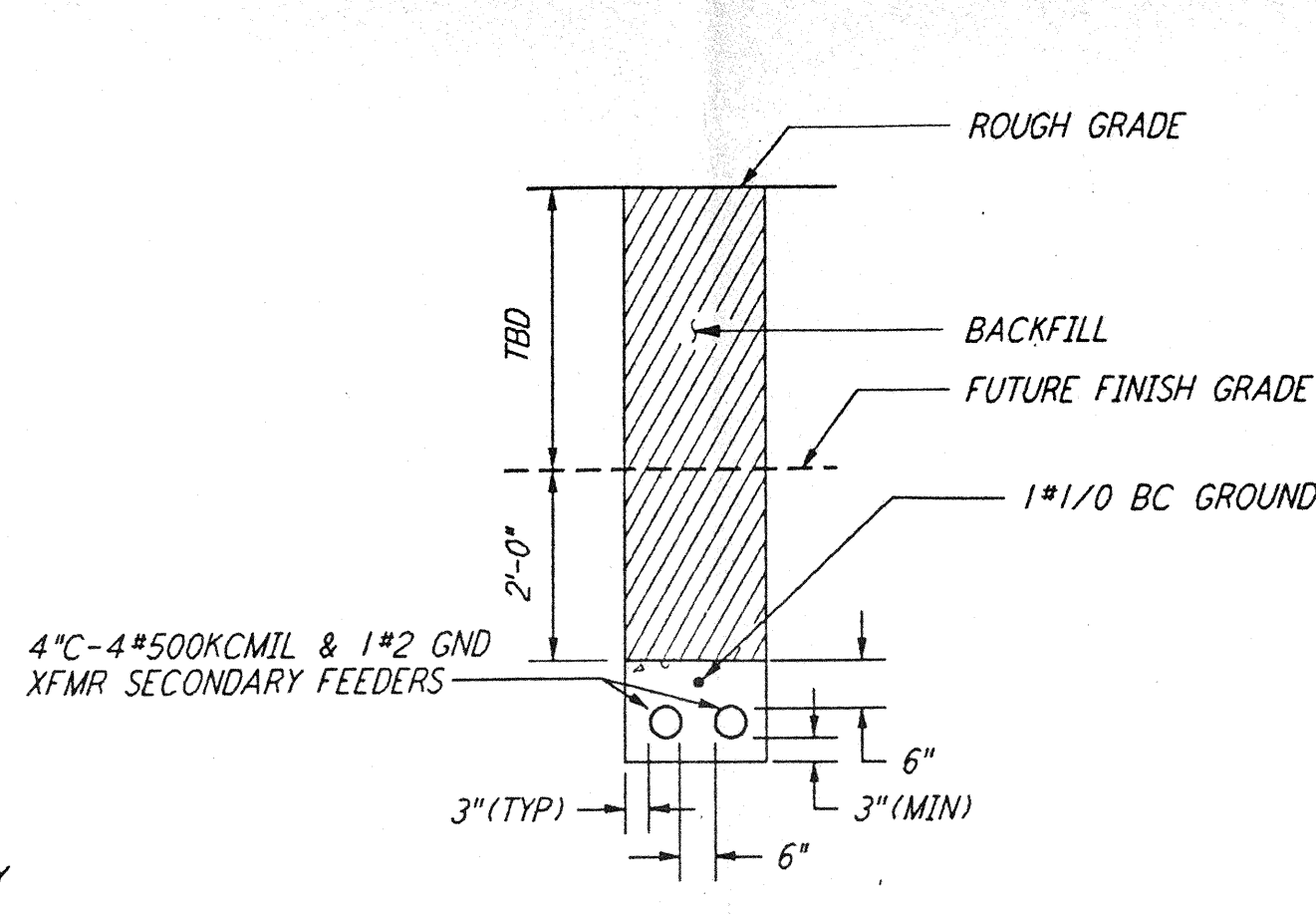
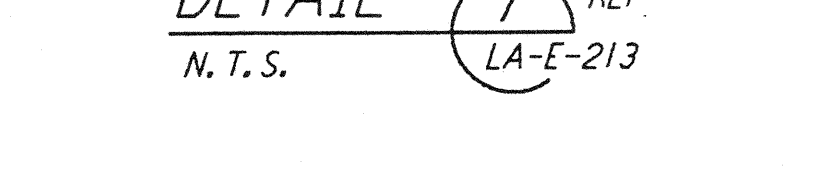
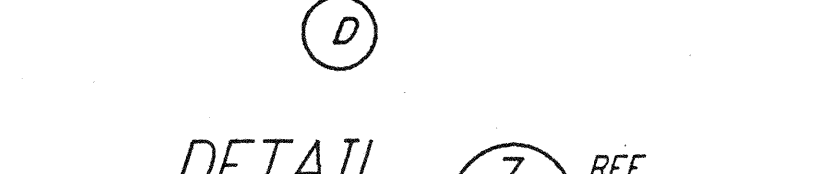
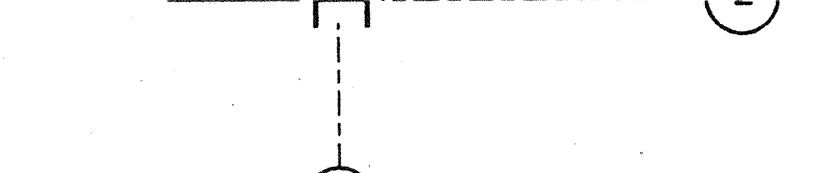
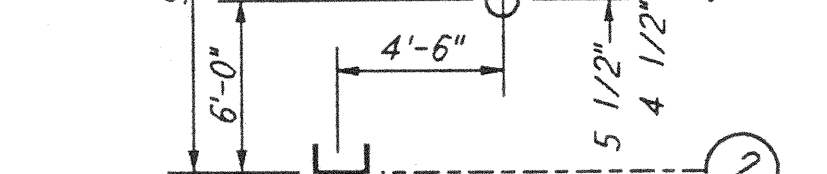
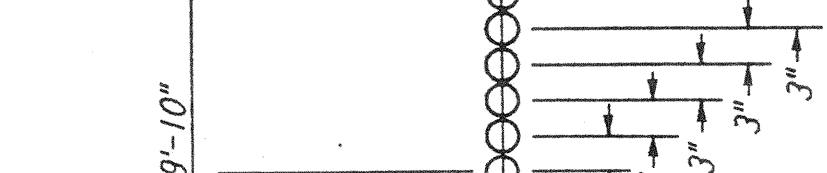
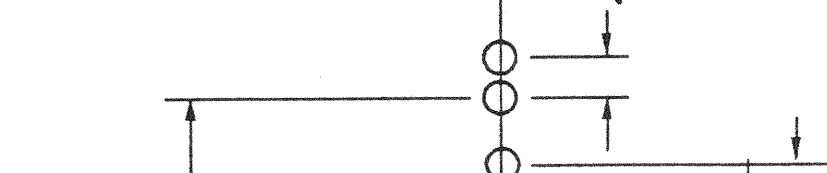
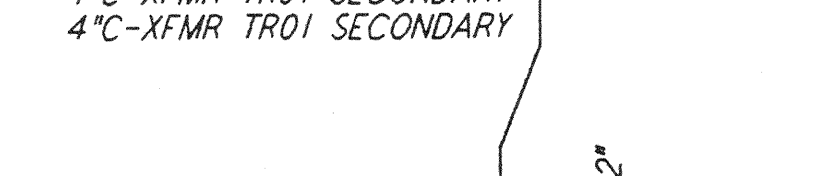
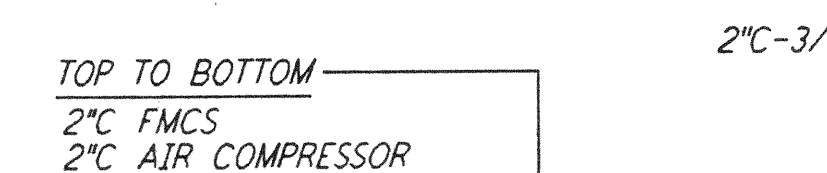
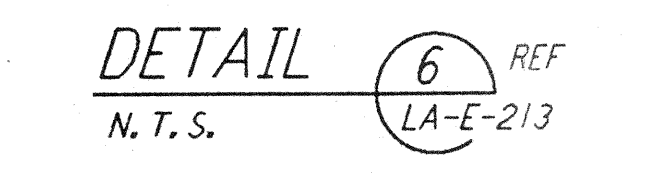
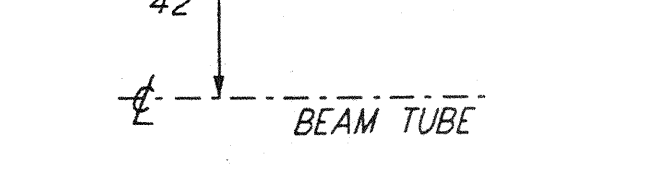
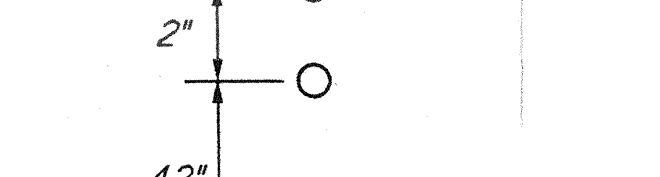
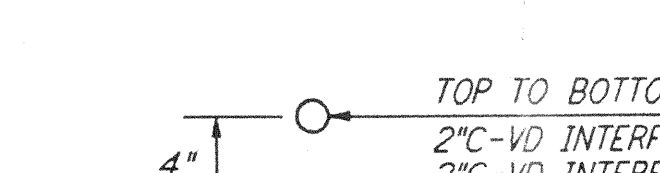
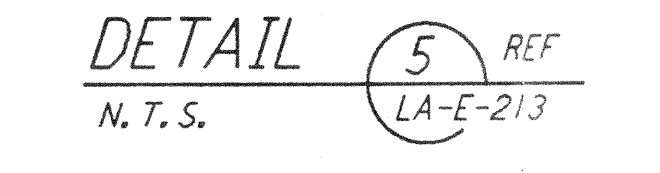
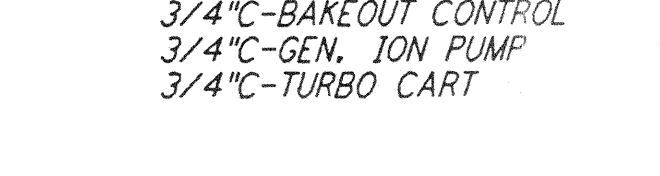
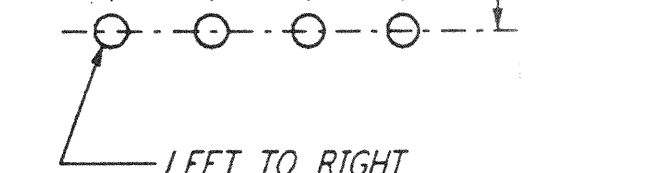
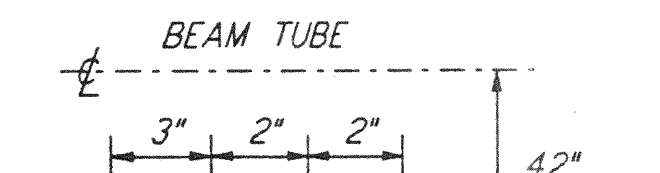
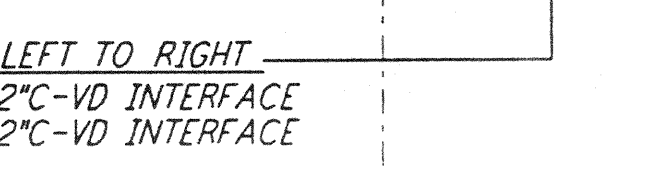
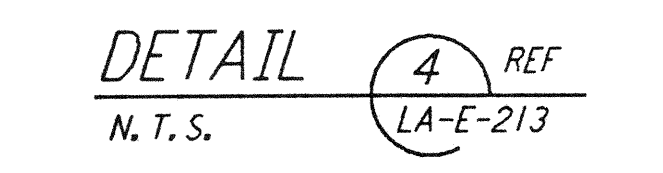
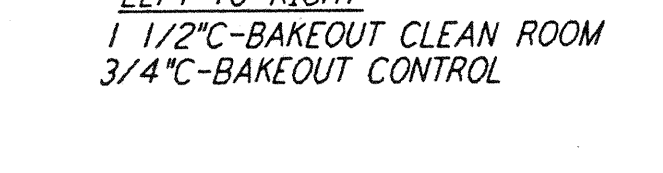
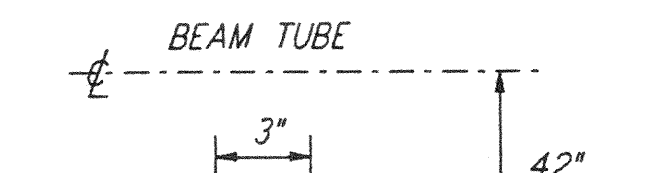
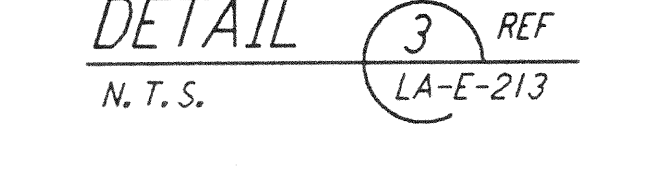
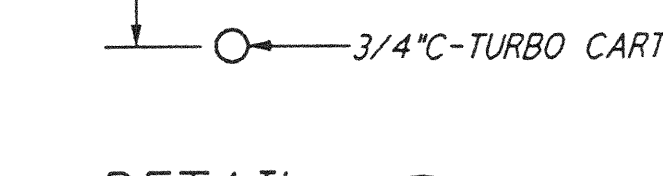
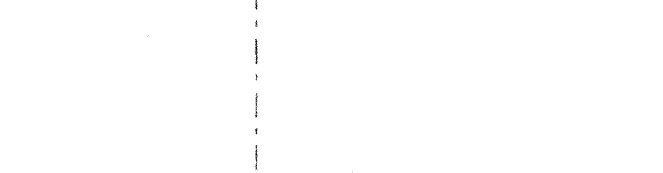
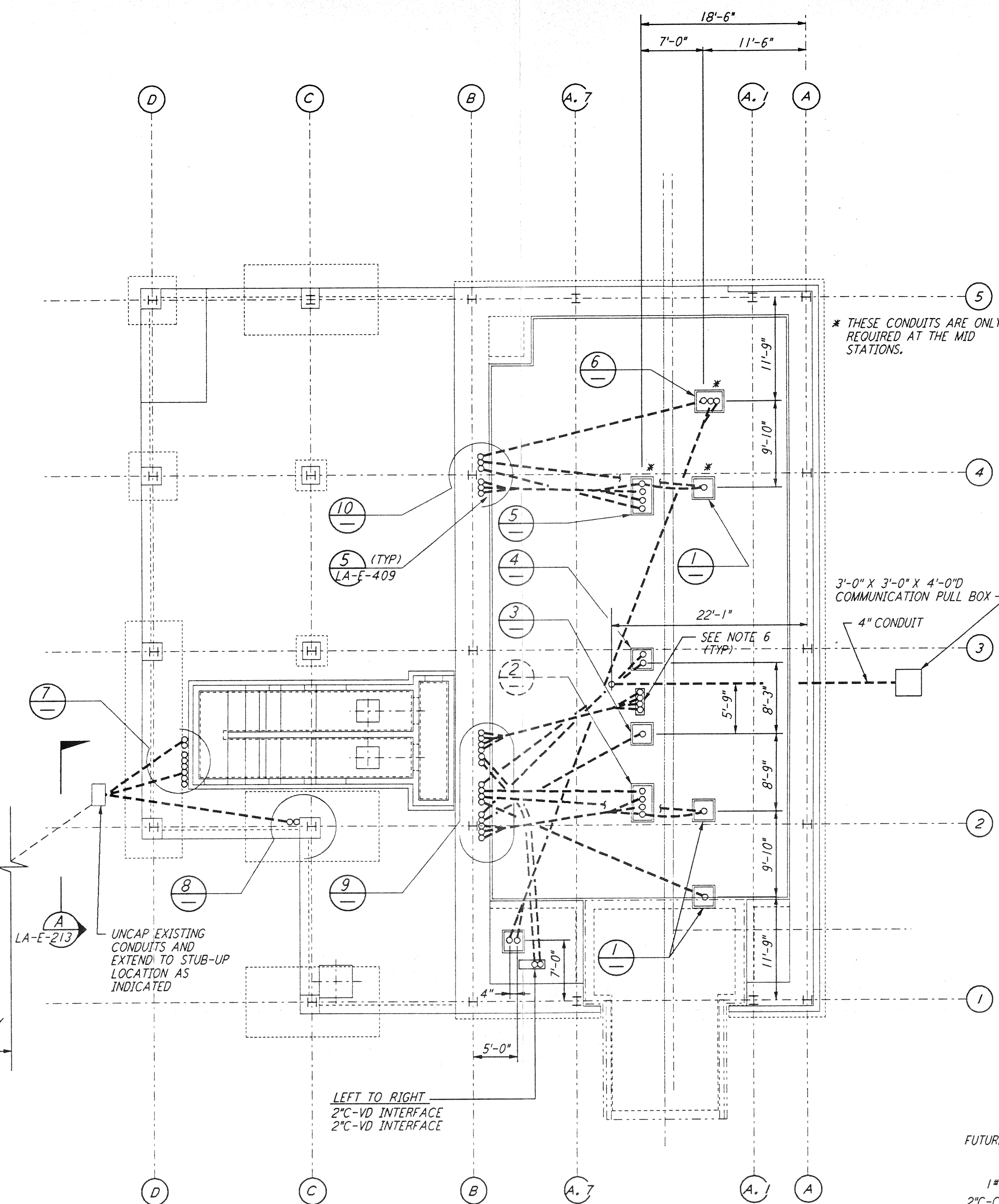
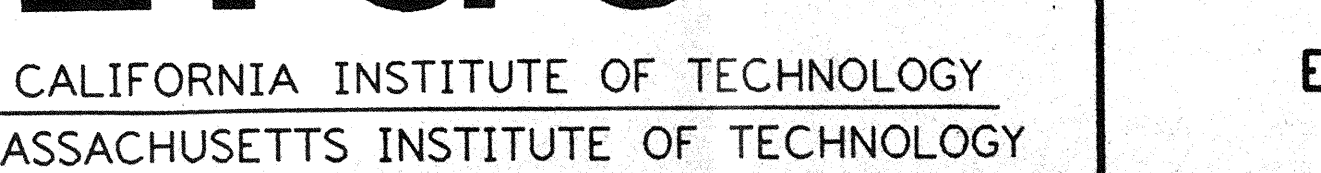
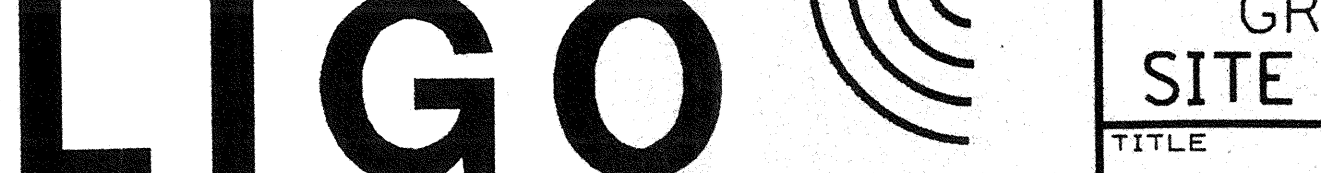
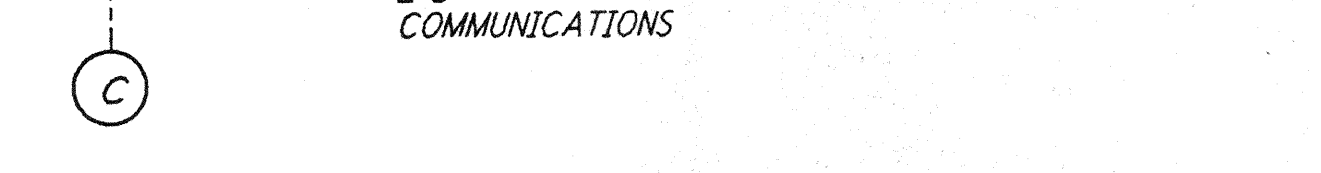
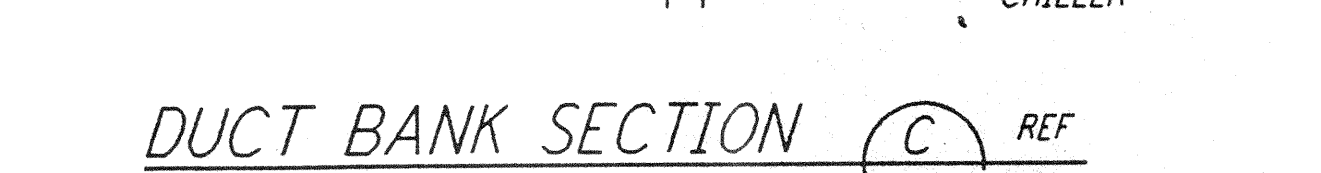
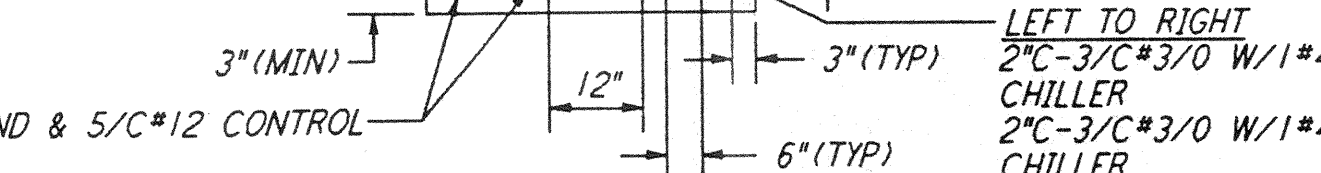
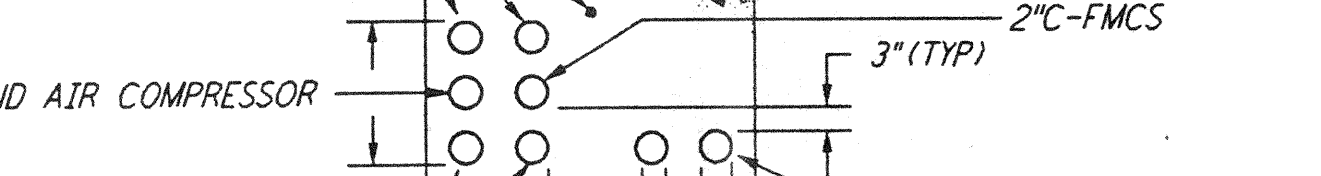
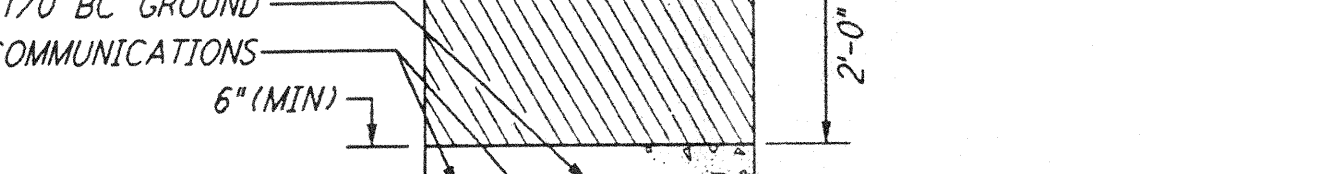
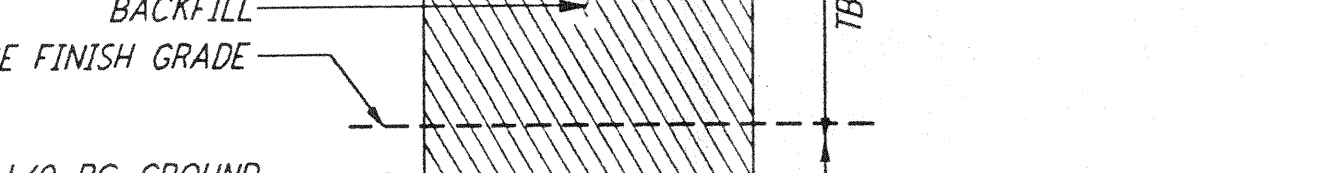
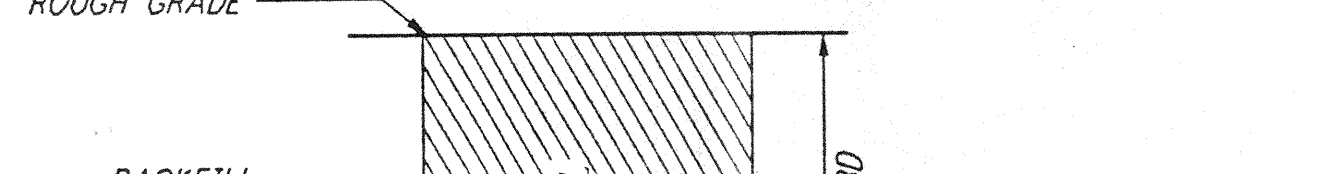
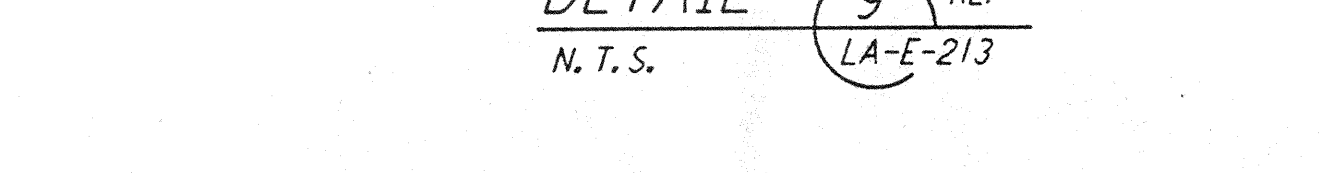
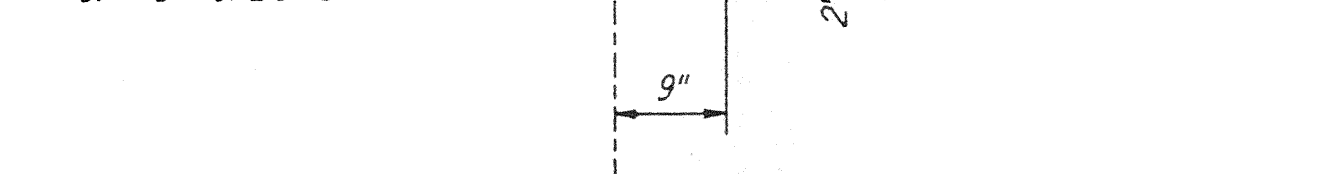
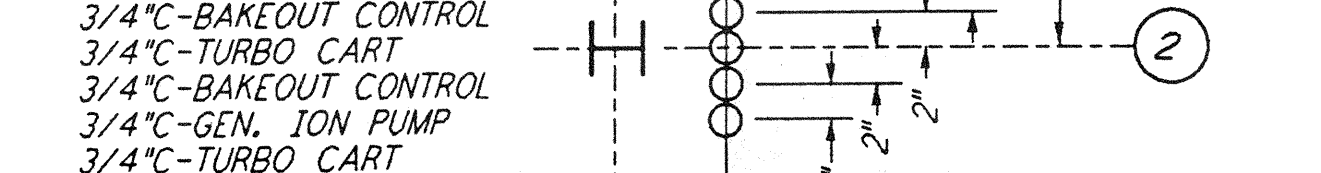
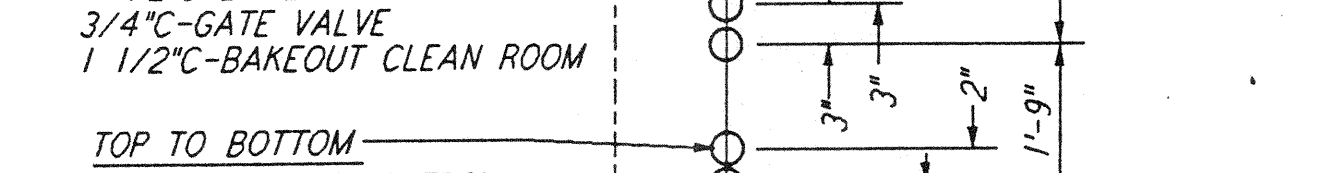
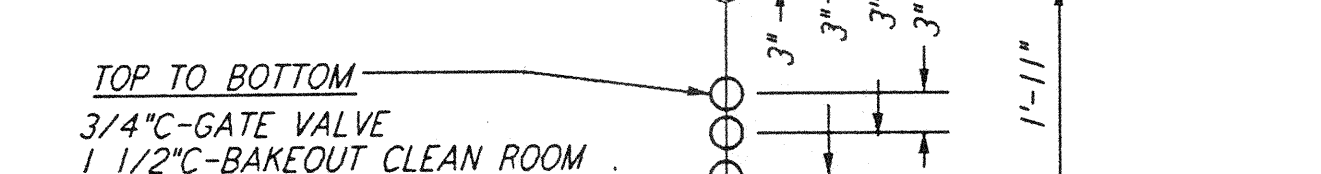
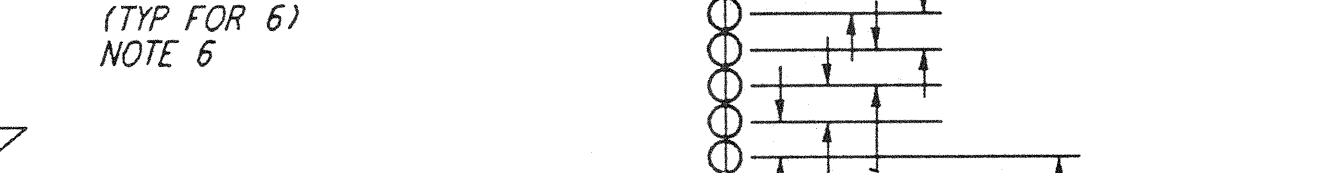
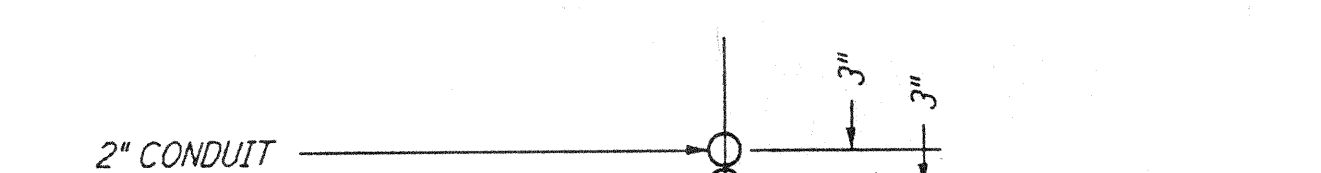


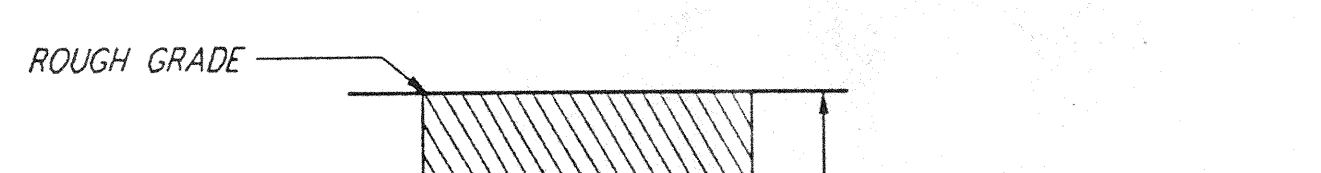
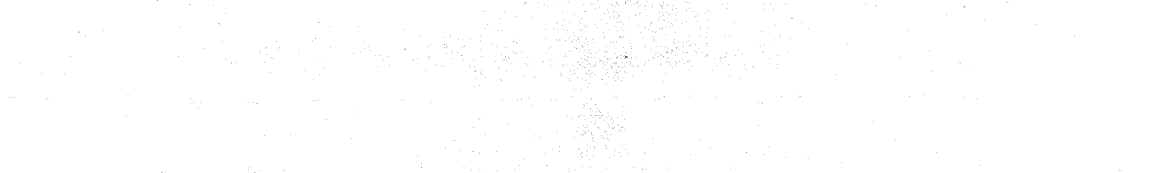
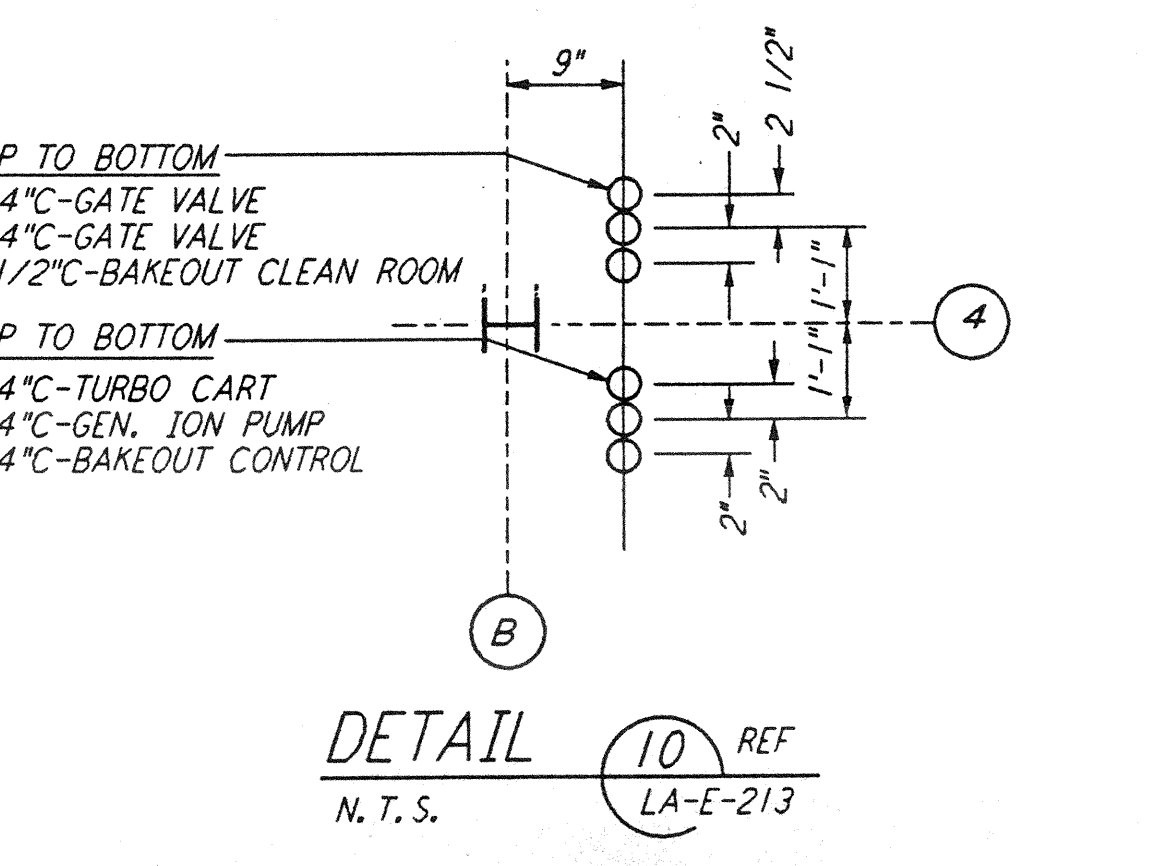
UNDERGROUND CHILLER PLAN



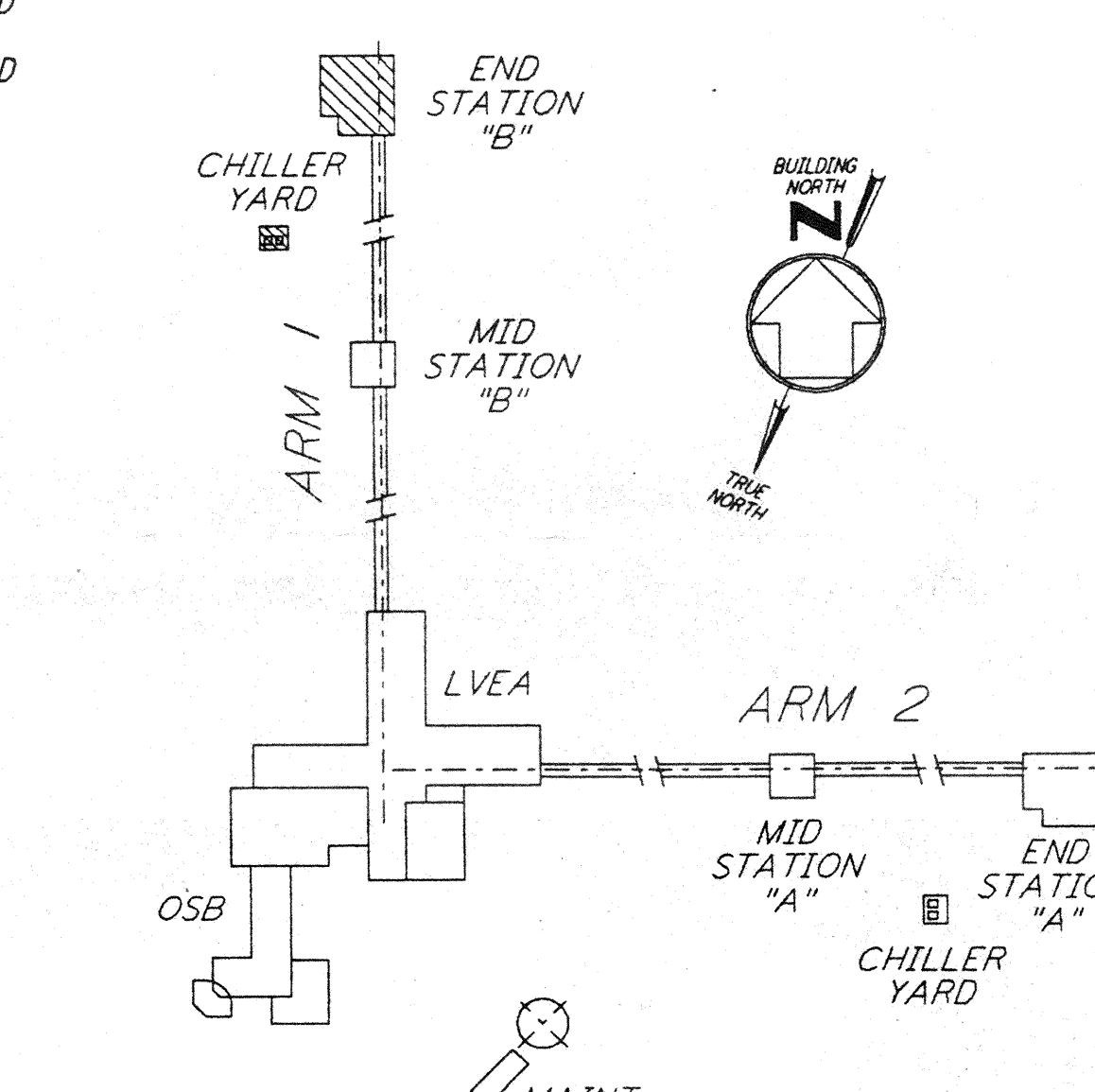
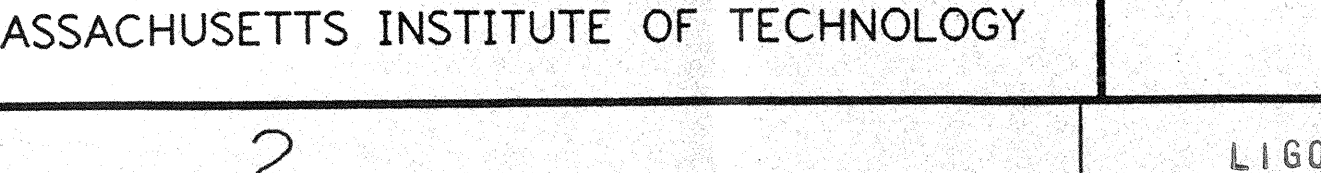
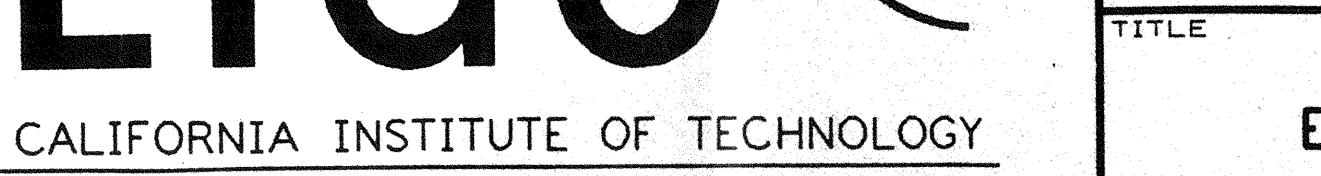
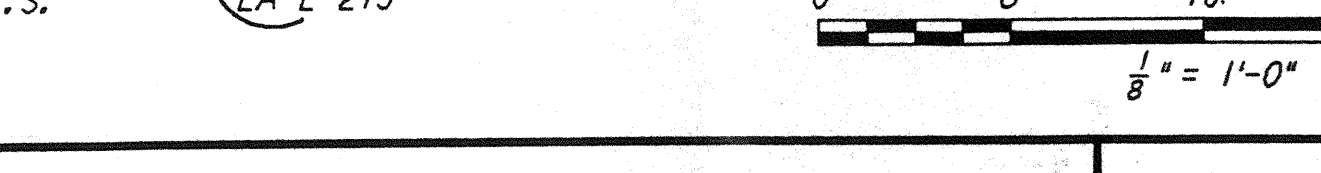
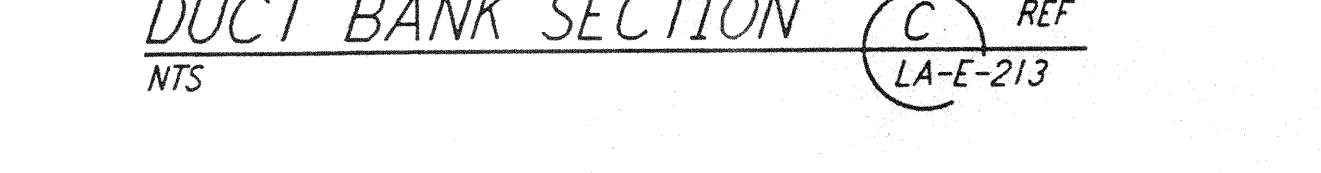
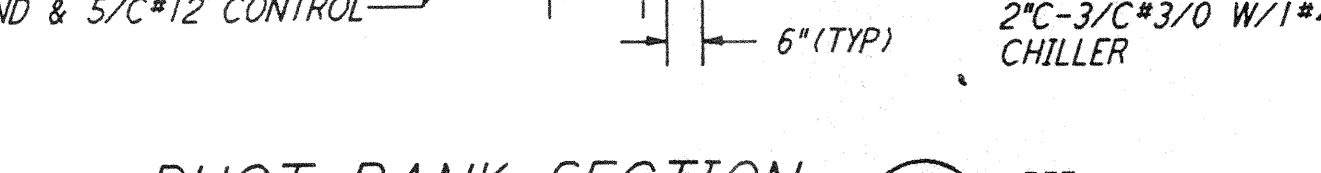
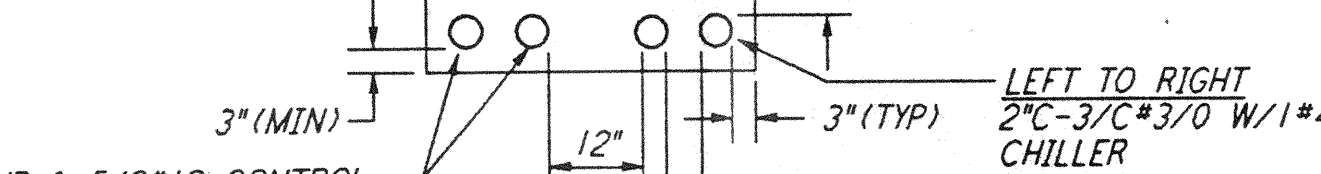
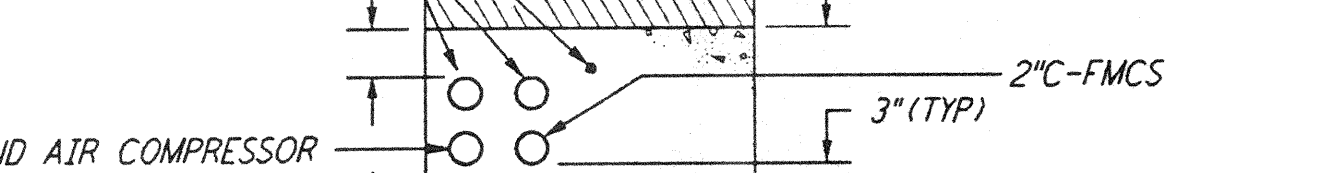
DUCT BANK SECTION B REF LA-E-213 N.T.S.



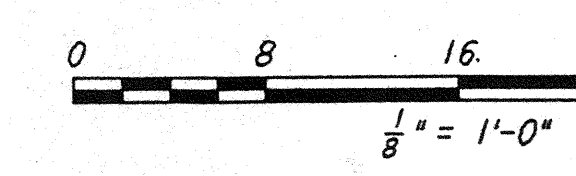
- NOTES:**
- FOR STANDARD SYMBOLS, ABBREVIATIONS AND ACRONYMS SEE DWG. LA-E-001.
 - FOR ELECTRICAL SYMBOLS SEE DWG. LA-E-002.
 - FOR STANDARD INSTALLATION DETAILS SEE DWG. LA-E-405 THRU LA-E-407.
 - FOR CABLE TYPE DESCRIPTION SEE DWG. LA-E-007.
 - ALL DUCTBANK RUNS ARE SHOWN DIAGRAMMATICALLY ONLY. CONTRACTOR SHALL COORDINATE INSTALLATION WITH OTHER DISCIPLINES. TO USE COMMON TRENCH, BACK FILL ETC.
 - ARRANGEMENT OF CDS POWER CONDUIT STUB-UPS SHALL BE COORDINATED WITH THE VACUUM EQUIPMENT VENDOR.



DUCT BANK SECTION C REF LA-E-213 N.T.S.



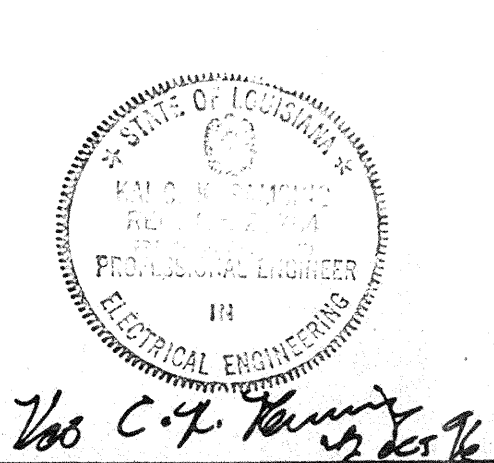
KEY PLAN



not be reproduced, copied, loaned, exhibited, or used in any other way, except by written consent from PARSONS to the borrower.

This document and the design it covers are the property of PARSONS. They are loaned only with the borrower's expressed written agreement that they will

ISSUED FOR CONSTRUCTION	
DRAWN	M. M. 11-15-96
CHECKED	JcL 7-24-96
ENGINEER	RCG 10-25-96
PROJ	ESD/AA 11/15/96



PARSONS
 100 WEST WALNUT STREET
 PASADENA, CALIFORNIA

LIGO
 CALIFORNIA INSTITUTE OF TECHNOLOGY
 MASSACHUSETTS INSTITUTE OF TECHNOLOGY

LASER INTERFEROMETER
 GRAVITATIONAL-WAVE OBSERVATORY
 SITE NO. 2 - LIVINGSTON, LOUISIANA

TITLE	SCALE	CONTRACT NUMBER	PROJECT NUMBER
ELECTRICAL END STATION B UNDERGROUND PLAN	AS NOTED	PP150969	8094
DRAWING NO.	DESCRIPTION	NO.	DATE
LA-E-213			

REFERENCES	REVISIONS
DRAWING NO.	DESCRIPTION
NO.	DATE
BY	CHKD
ENGR	PROJ
DESCRIPTION	