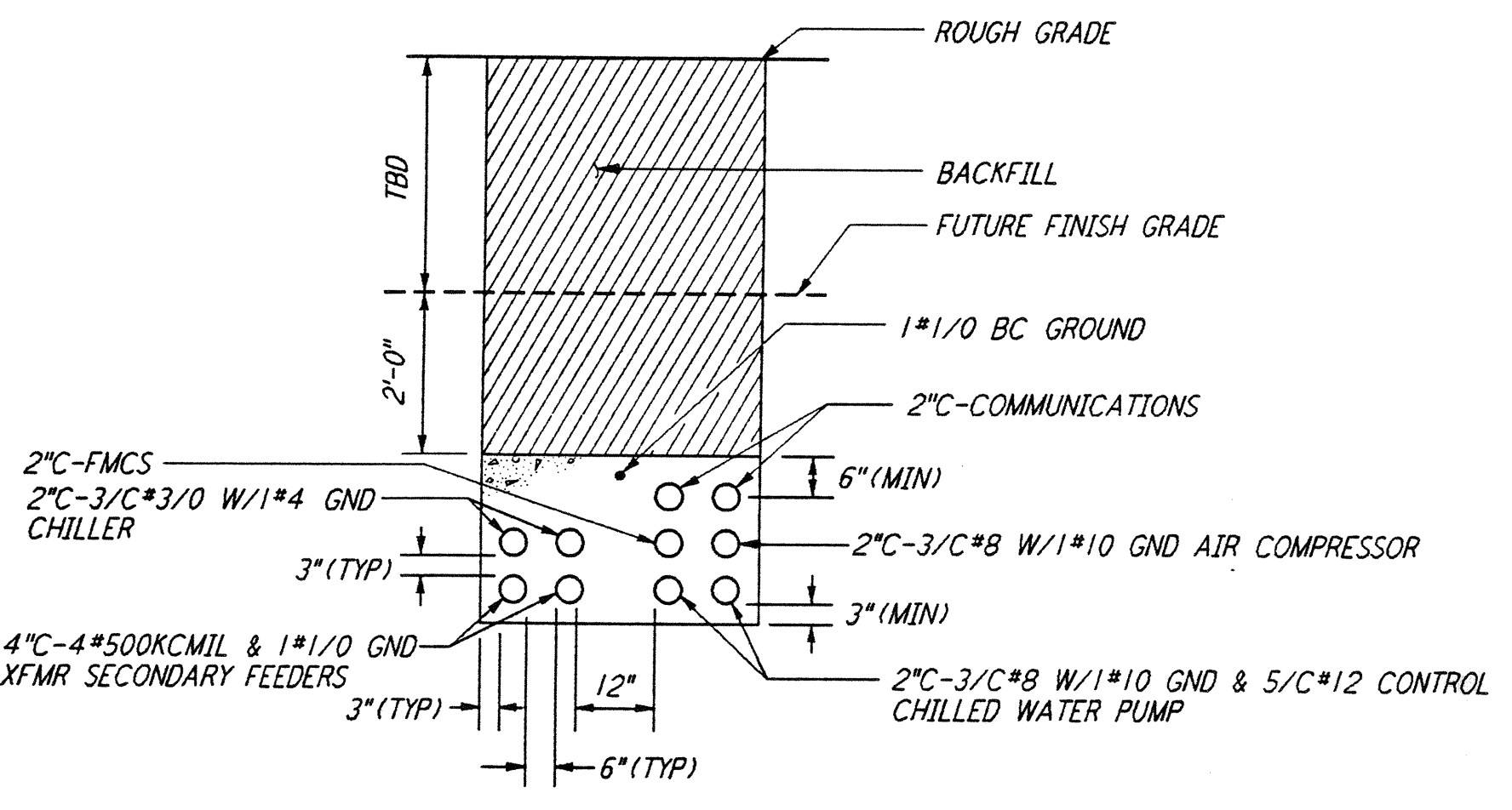
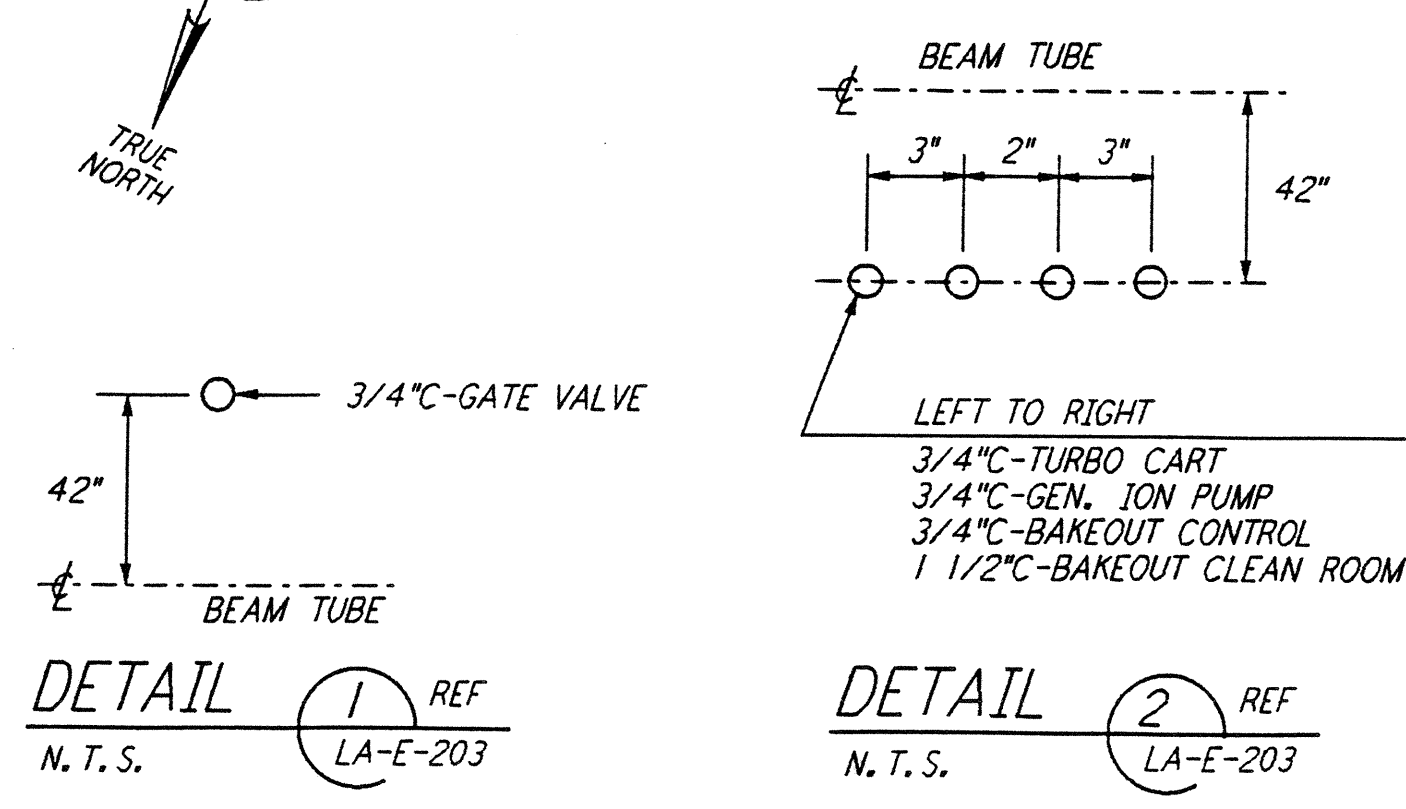
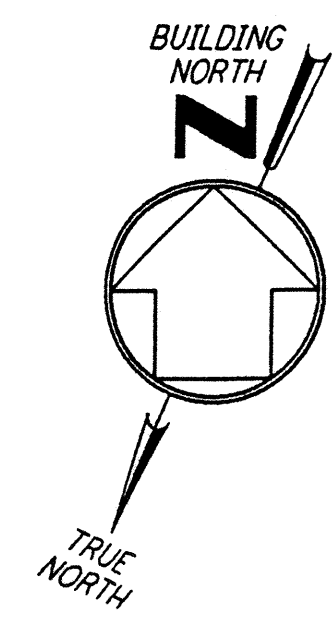
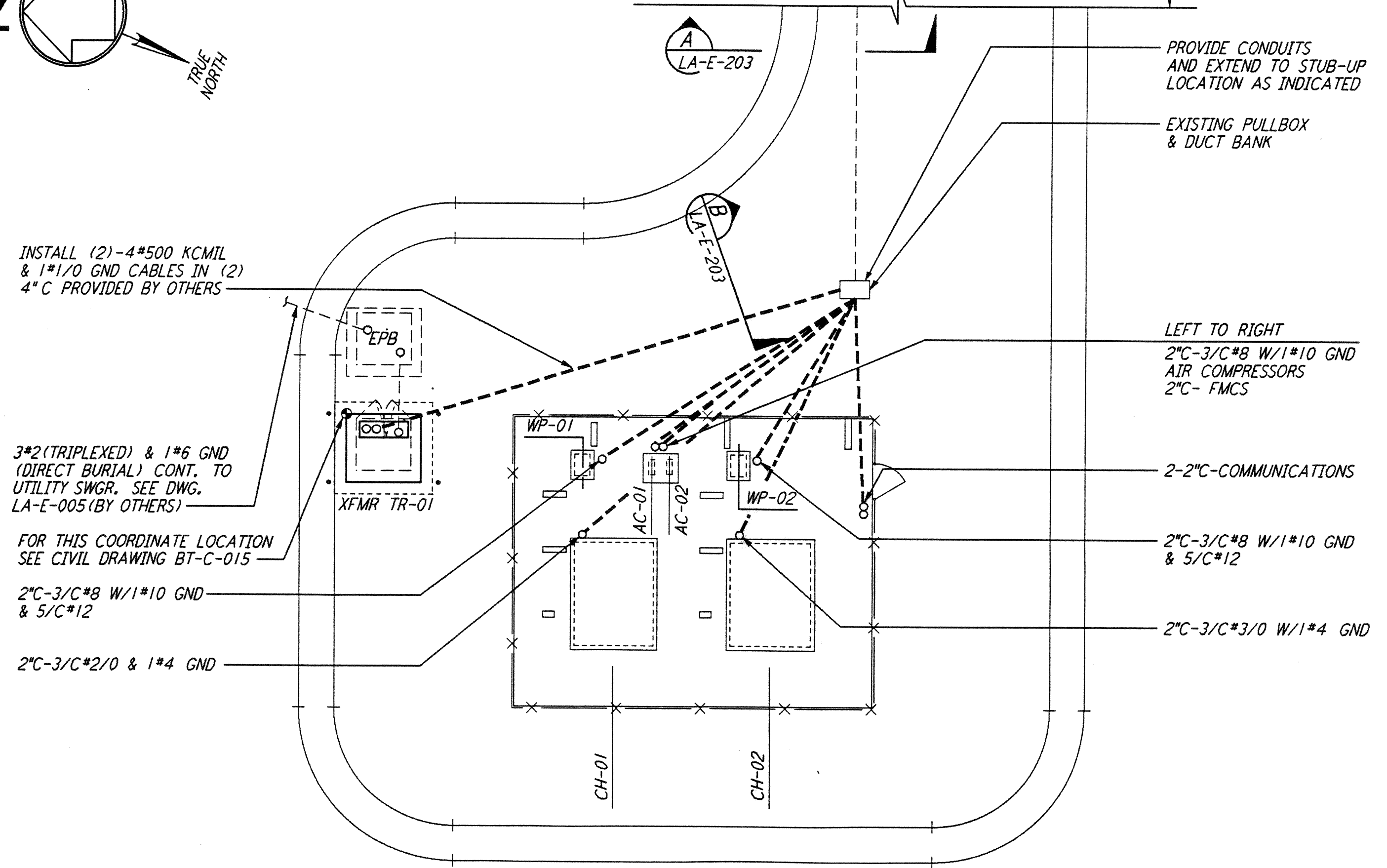
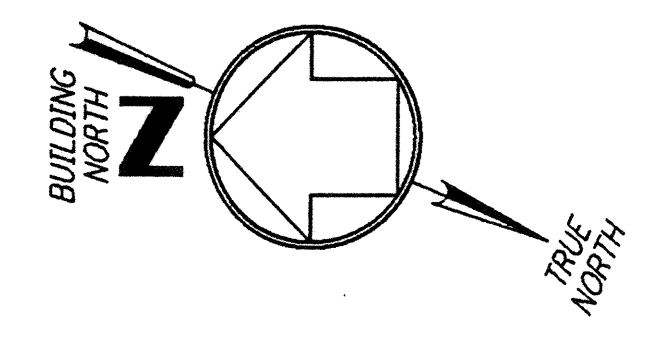


not be reproduced, copied, loaned, exhibited, or used in any other way, except by written consent from PARSONS to the borrower.

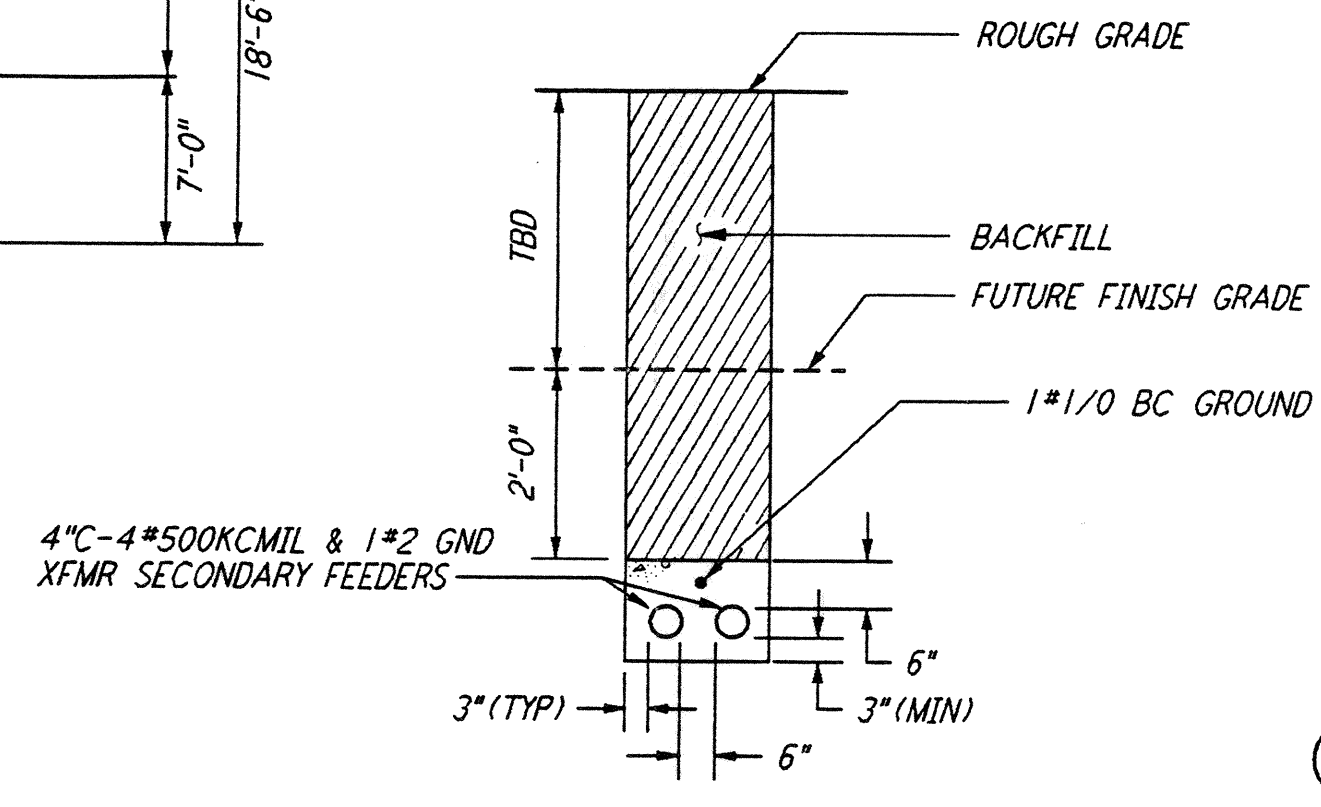
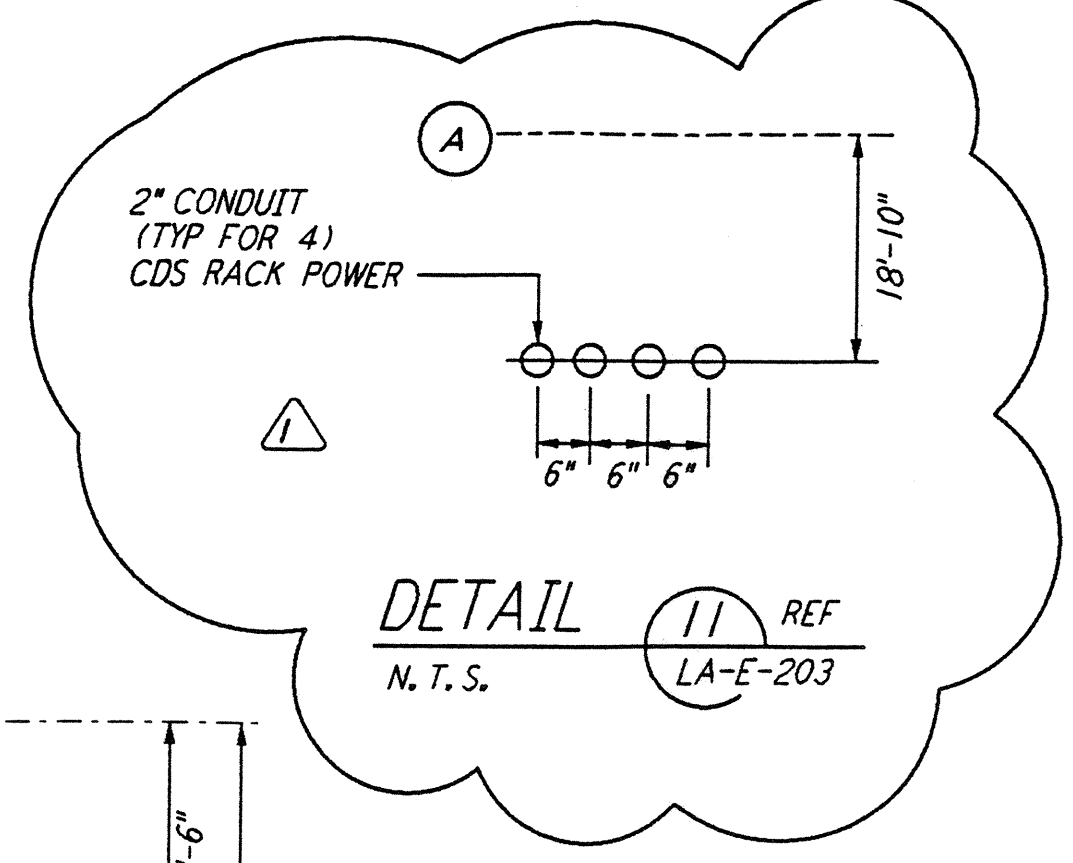
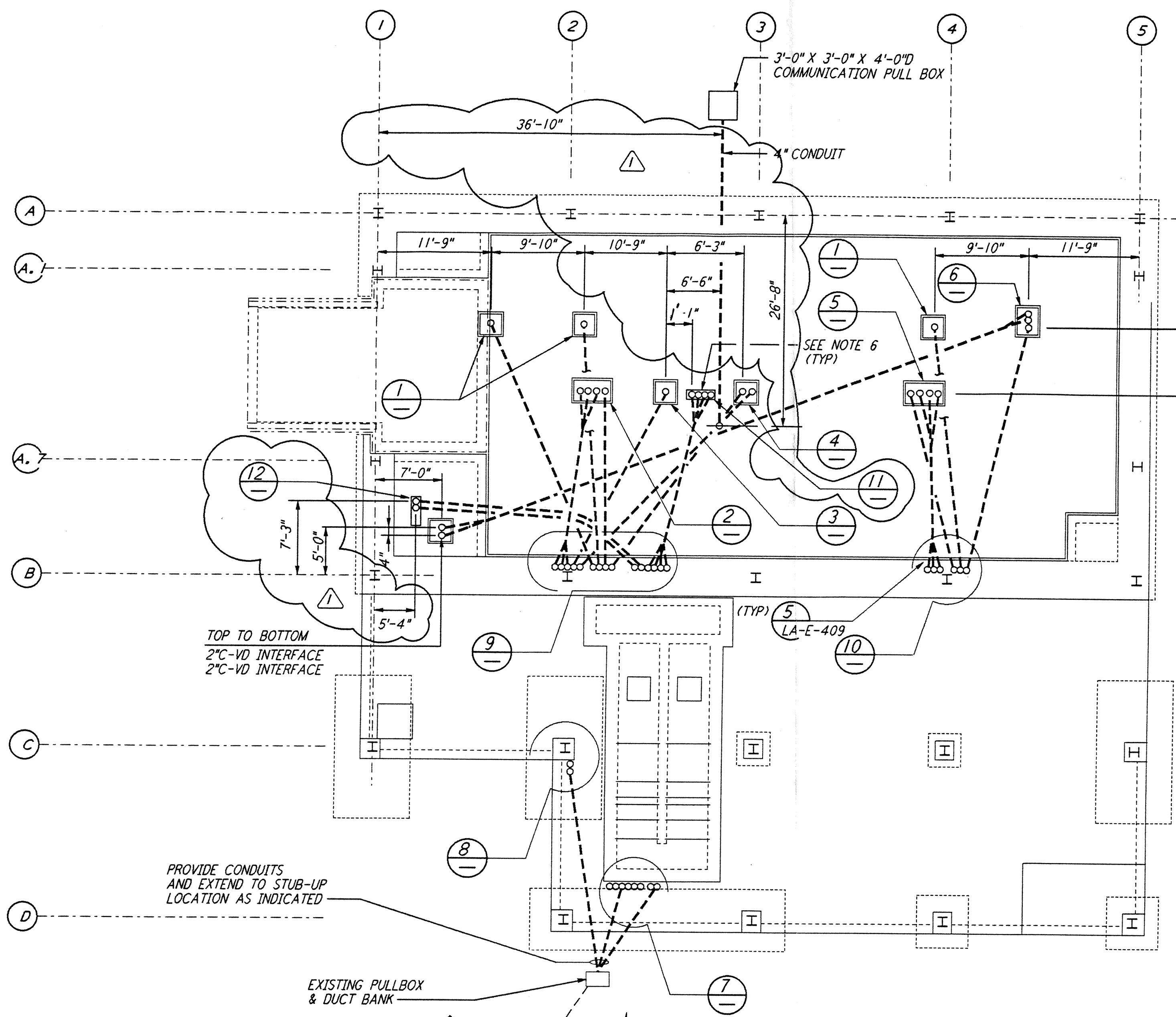
This document and the design it covers are the property of PARSONS. They are loaned only with the borrower's expressed written agreement that they will



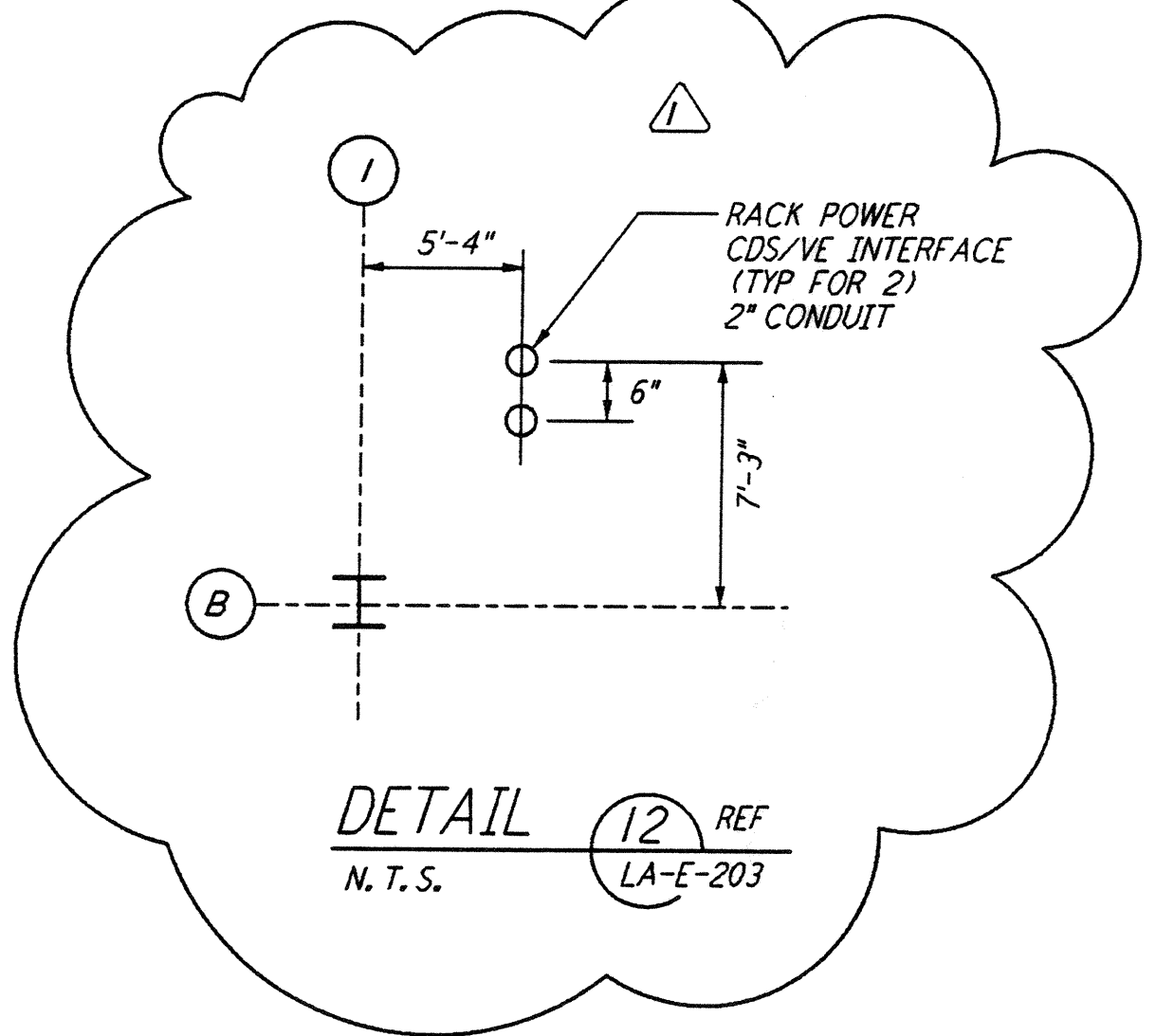
EXIST DUCT BANK SECTION
 N.T.S. REF LA-E-203



UNDERGROUND CHILLER PLAN

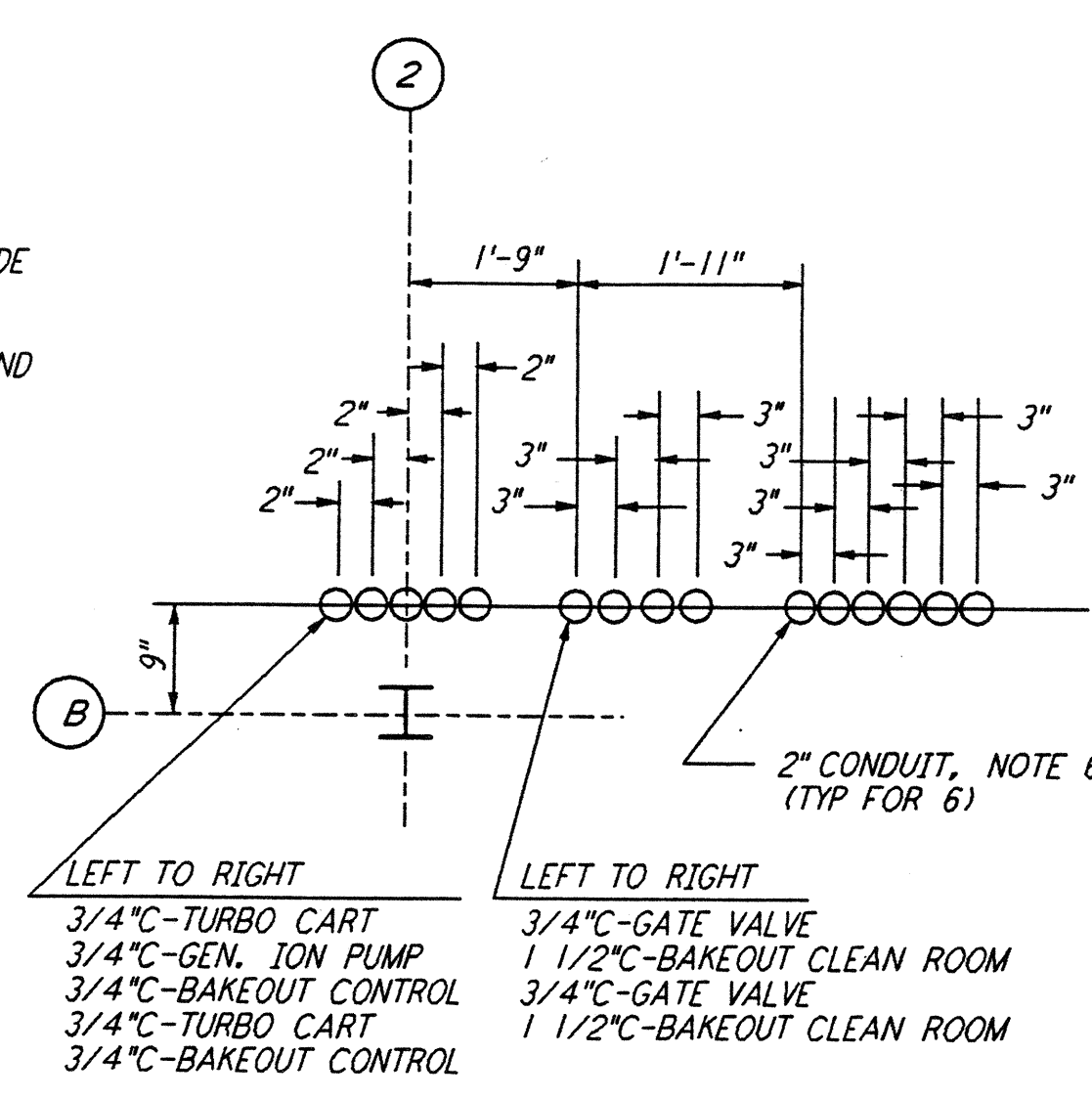


DUCT BANK SECTION
 N.T.S. REF LA-E-203

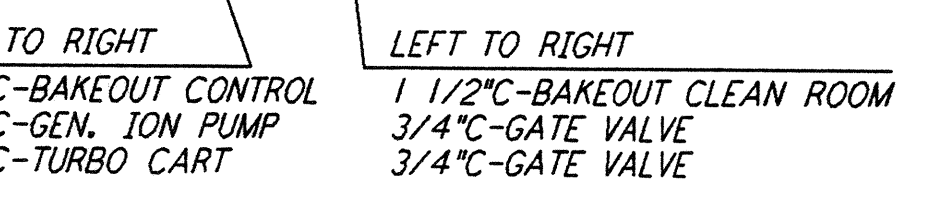
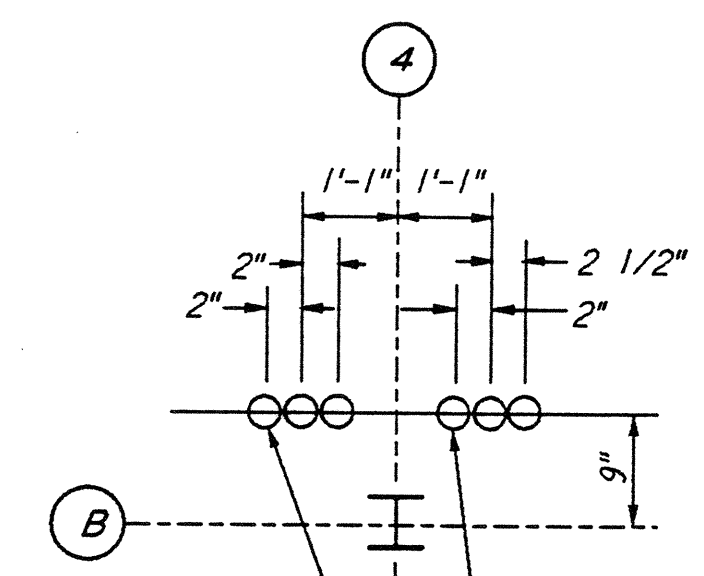


DETAIL 12 REF
 N.T.S. LA-E-203

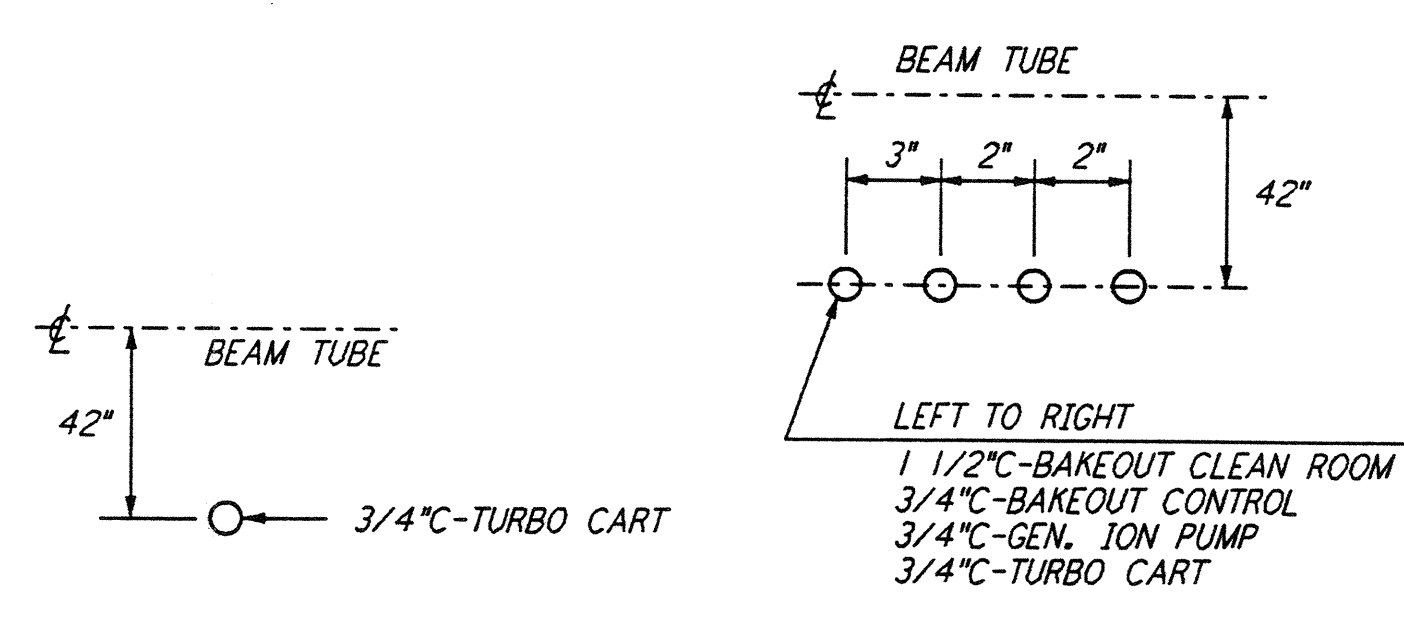
- NOTES:**
- FOR STANDARD SYMBOLS, ABBREVIATIONS AND ACRONYMS SEE DWG. LA-E-001.
 - FOR ELECTRICAL INSTALLATIONS SEE DWG. LA-E-002.
 - FOR STANDARD INSTALLATION DETAILS SEE DWG. LA-E-405 THRU LA-E-407.
 - FOR CABLE TYPE DESCRIPTION SEE DWG. LA-E-007.
 - ALL DUCTBANK RUNS ARE SHOWN DIAGRAMMATICALLY ONLY. CONTRACTOR SHALL COORDINATE INSTALLATION WITH OTHER DISCIPLINES. TO USE COMMON TRENCH, BACK FILL ETC.
 - ARRANGEMENT OF CDS POWER CONDUIT STUB-UPS SHALL BE COORDINATED WITH THE VACUUM EQUIPMENT VENDOR.



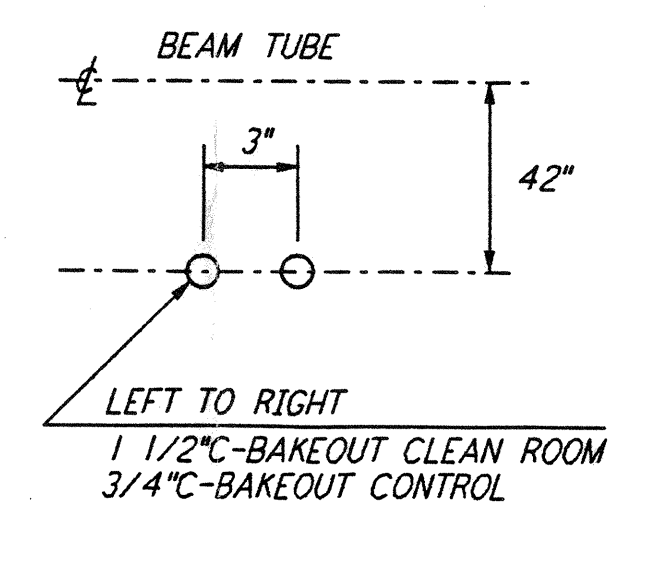
DETAIL 9 REF
 N.T.S. LA-E-203



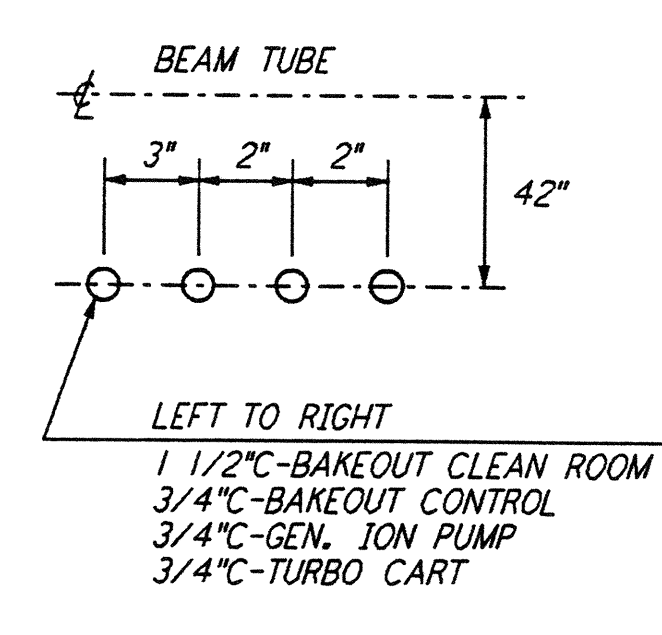
DETAIL 10 REF
 N.T.S. LA-E-203



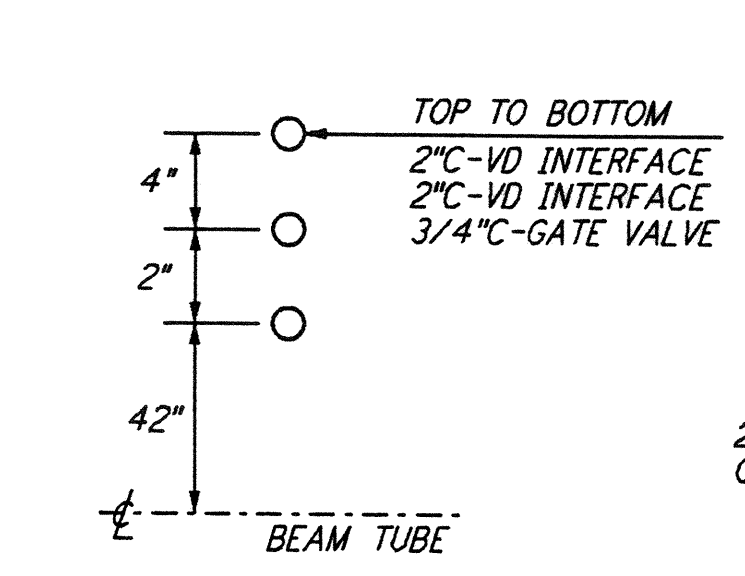
DETAIL 3 REF
 N.T.S. LA-E-203



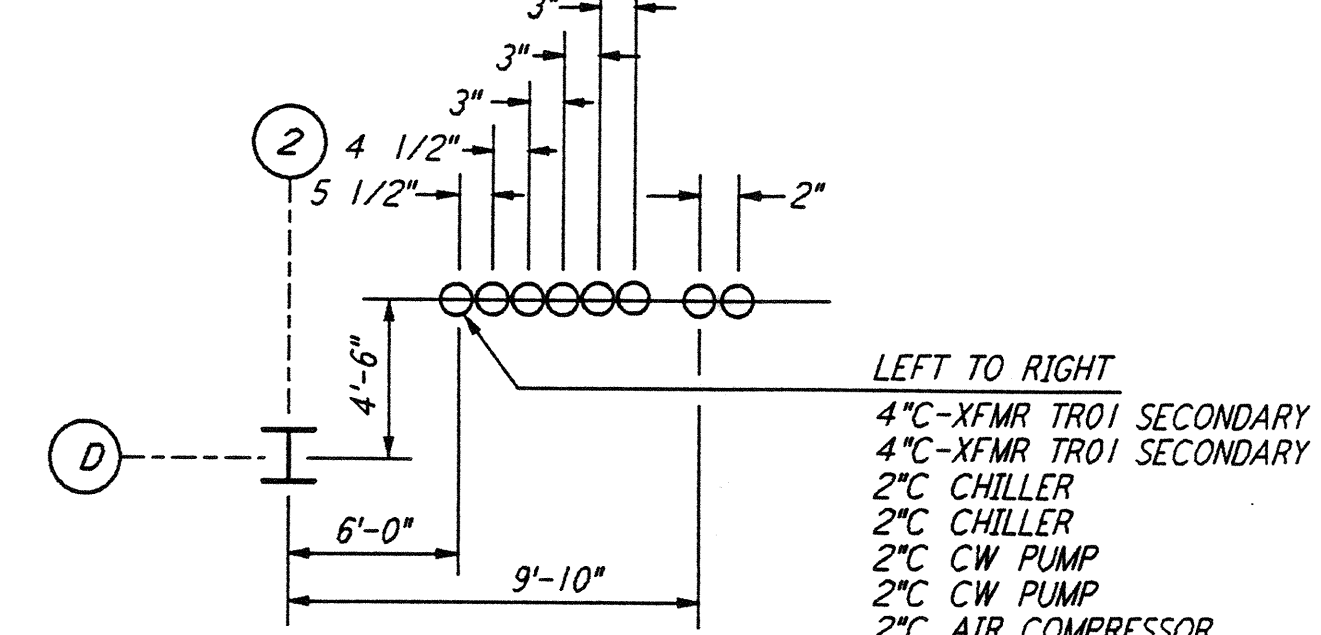
DETAIL 4 REF
 N.T.S. LA-E-203



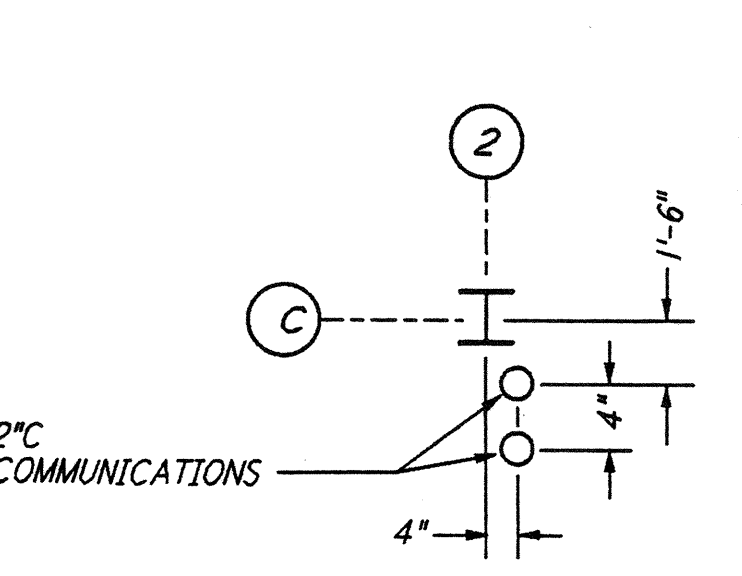
DETAIL 5 REF
 N.T.S. LA-E-203



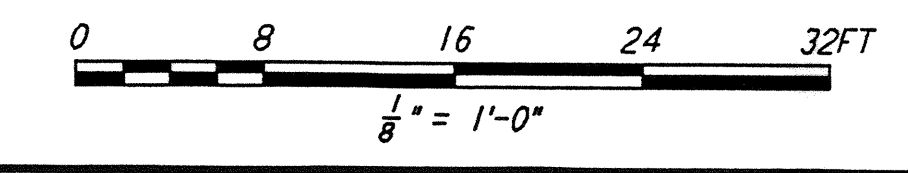
DETAIL 6 REF
 N.T.S. LA-E-203



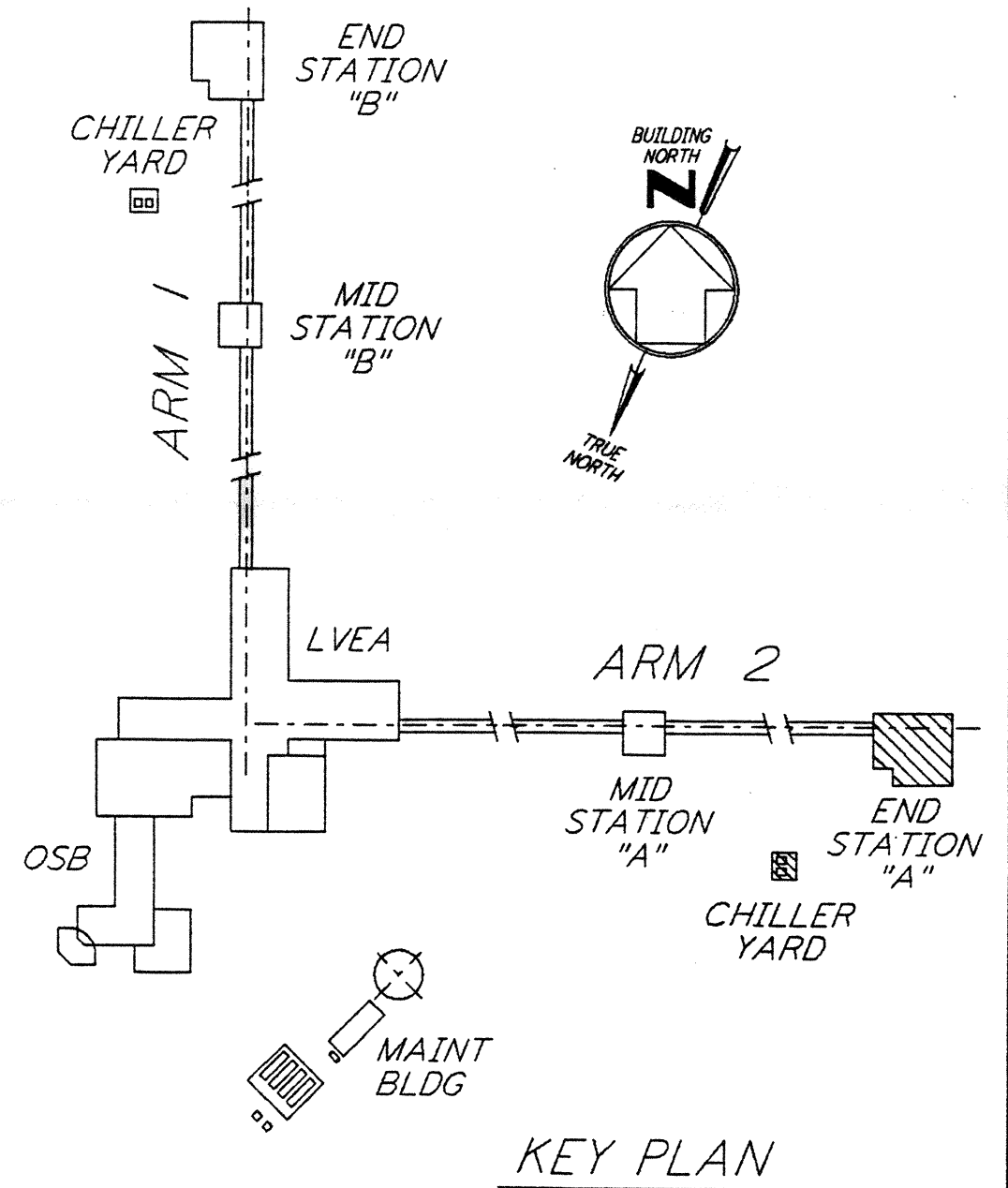
DETAIL 7 REF
 N.T.S. LA-E-203



DETAIL 8 REF
 N.T.S. LA-E-203



LIGO-D961027-01-0

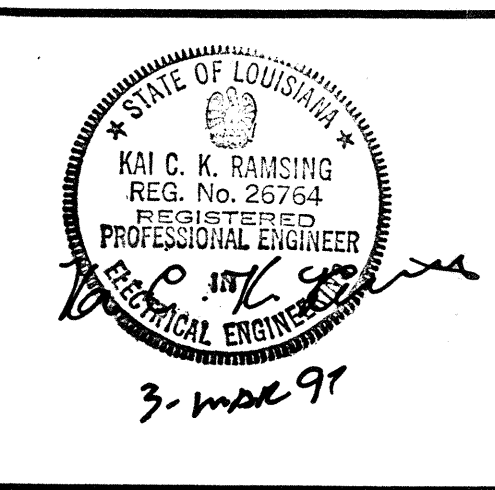


KEY PLAN

NO.	DATE	BY	CHKD	ENGR	PROJ	DESCRIPTION
1	3-17-97	JG	KPR	ACB	TDM	REVISED VACUUM EQUIP. LOCATIONS

NO.	DATE	BY	CHKD	ENGR	PROJ	DESCRIPTION
1	3-17-97	JG	KPR	ACB	TDM	REVISED VACUUM EQUIP. LOCATIONS

NO.	DATE	BY	CHKD	ENGR	PROJ	DESCRIPTION
1	3-17-97	JG	KPR	ACB	TDM	REVISED VACUUM EQUIP. LOCATIONS



PARSONS
 100 WEST WALNUT STREET
 PASADENA, CALIFORNIA

LIGO
 CALIFORNIA INSTITUTE OF TECHNOLOGY
 MASSACHUSETTS INSTITUTE OF TECHNOLOGY

**LASER INTERFEROMETER
 GRAVITATIONAL-WAVE OBSERVATORY
 SITE NO. 2 - LIVINGSTON, LOUISIANA**

**ELECTRICAL
 END STATION A
 UNDERGROUND
 PLAN**

SCALE: AS NOTED
 CONTRACT NUMBER: PPI50969
 PROJECT NUMBER: 8094

LA-E-203