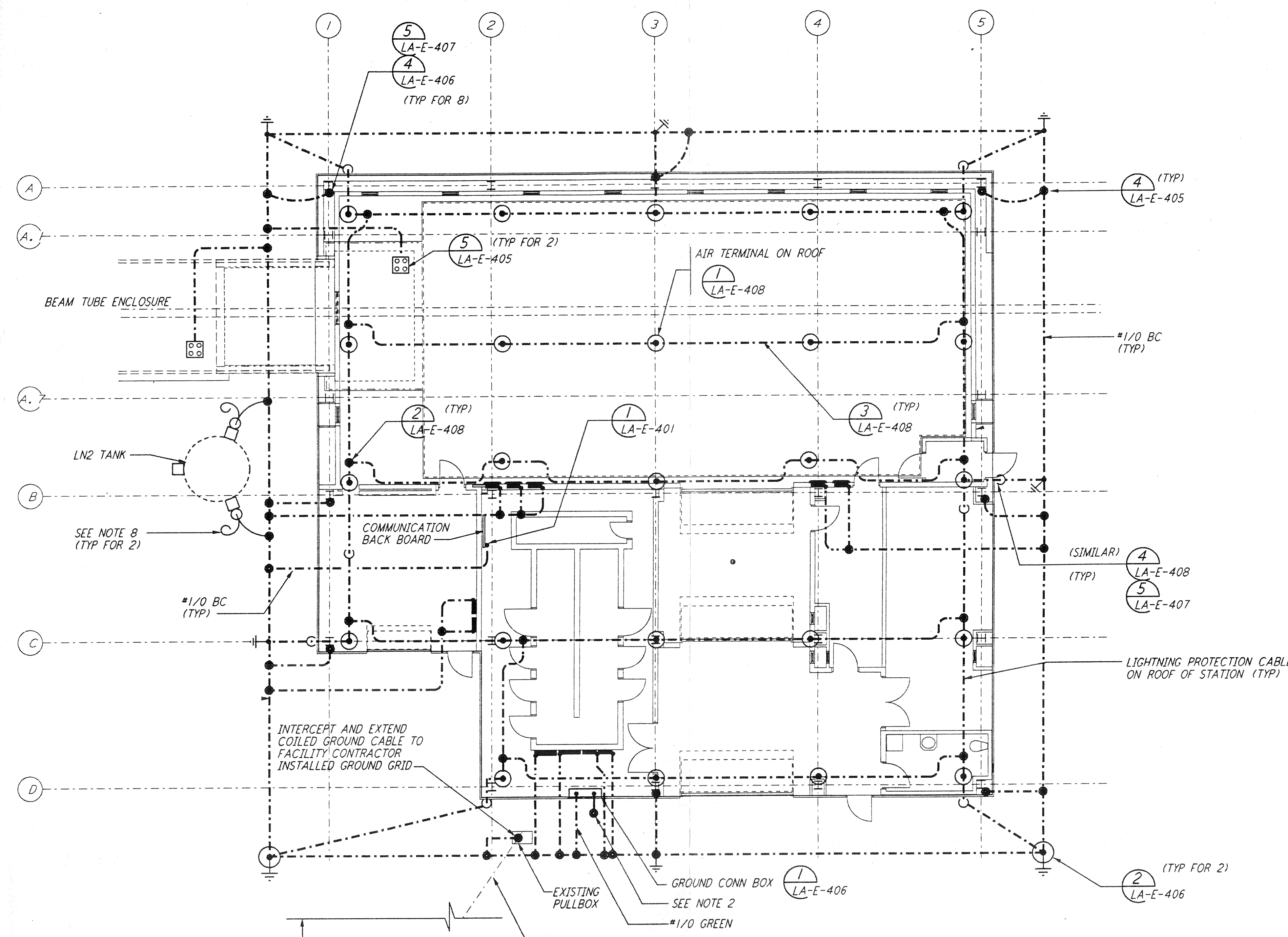
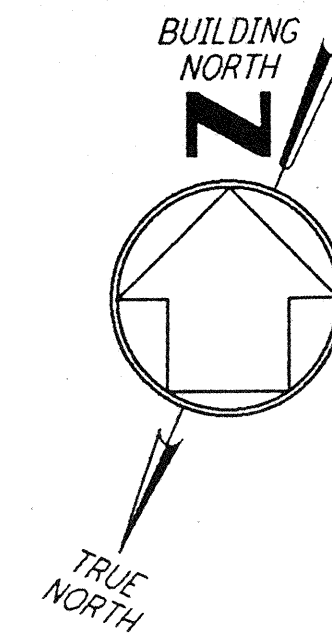


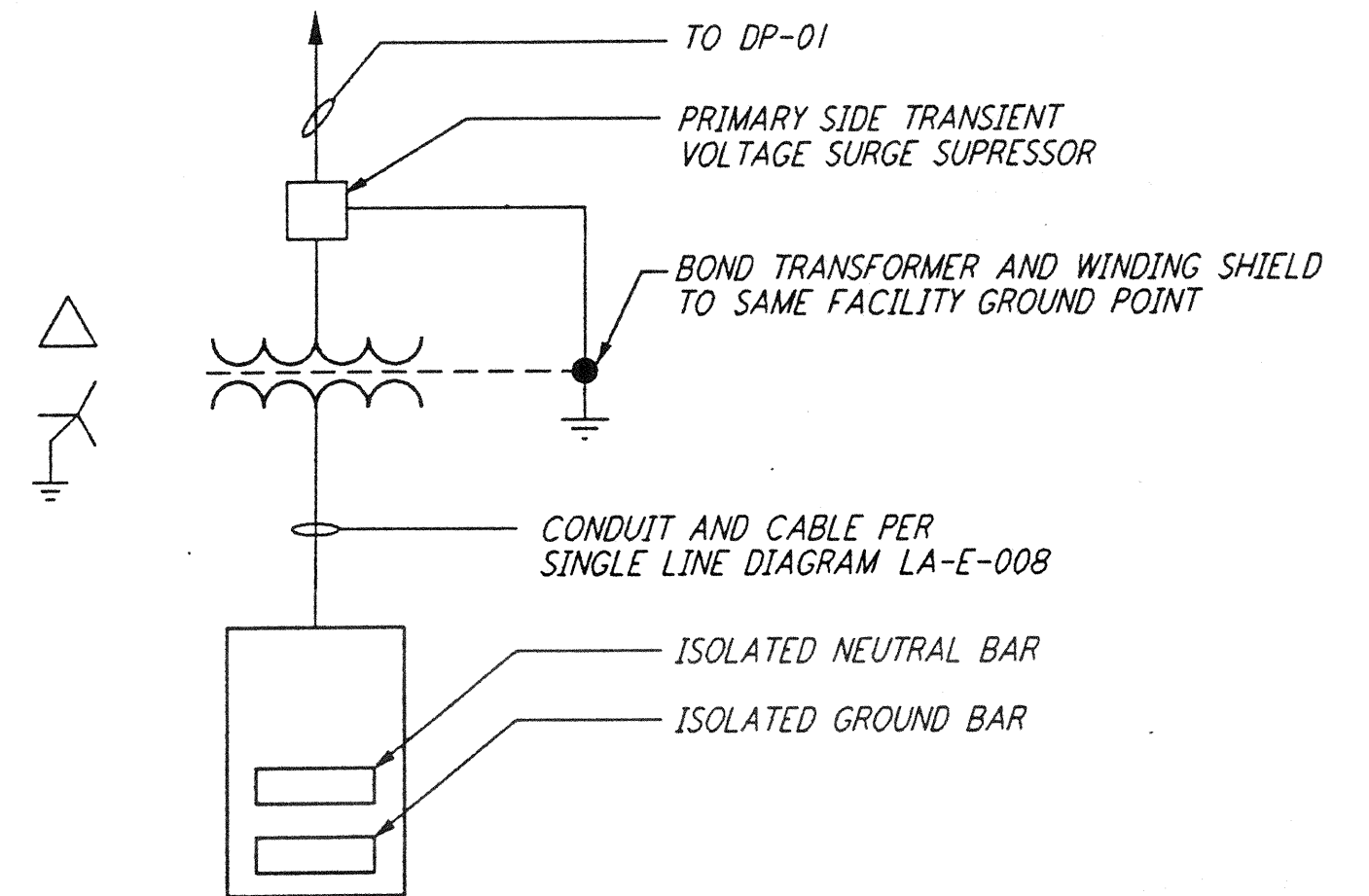
not be reproduced, copied, loaned, exhibited, or used in any other way, except by written consent from PARSONS to the borrower.

This document and the design it covers are the property of PARSONS. They are loaned only with the borrower's expressed written agreement that they will

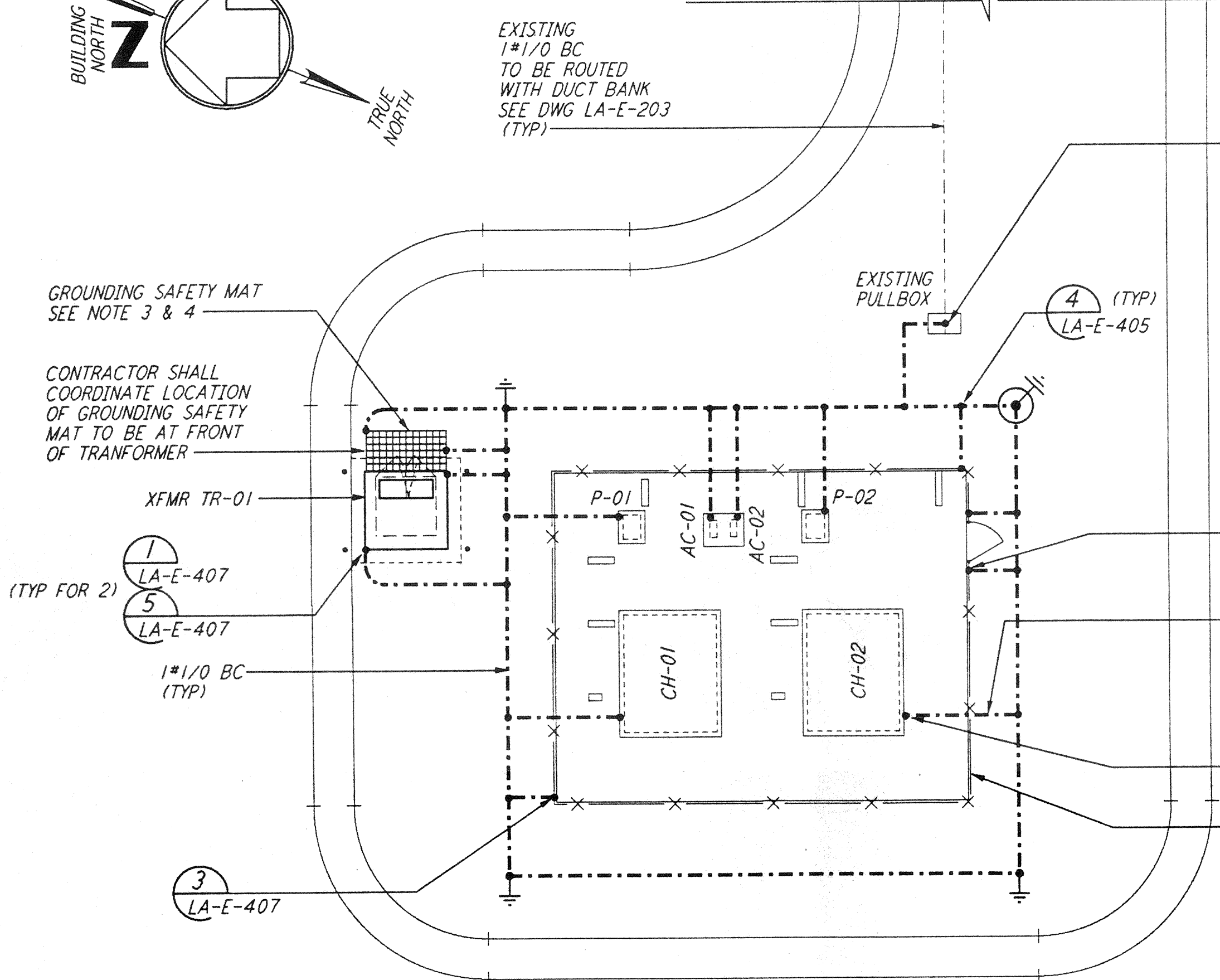
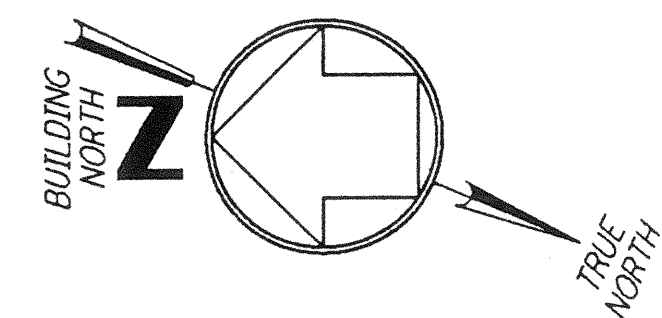


**NOTES:**

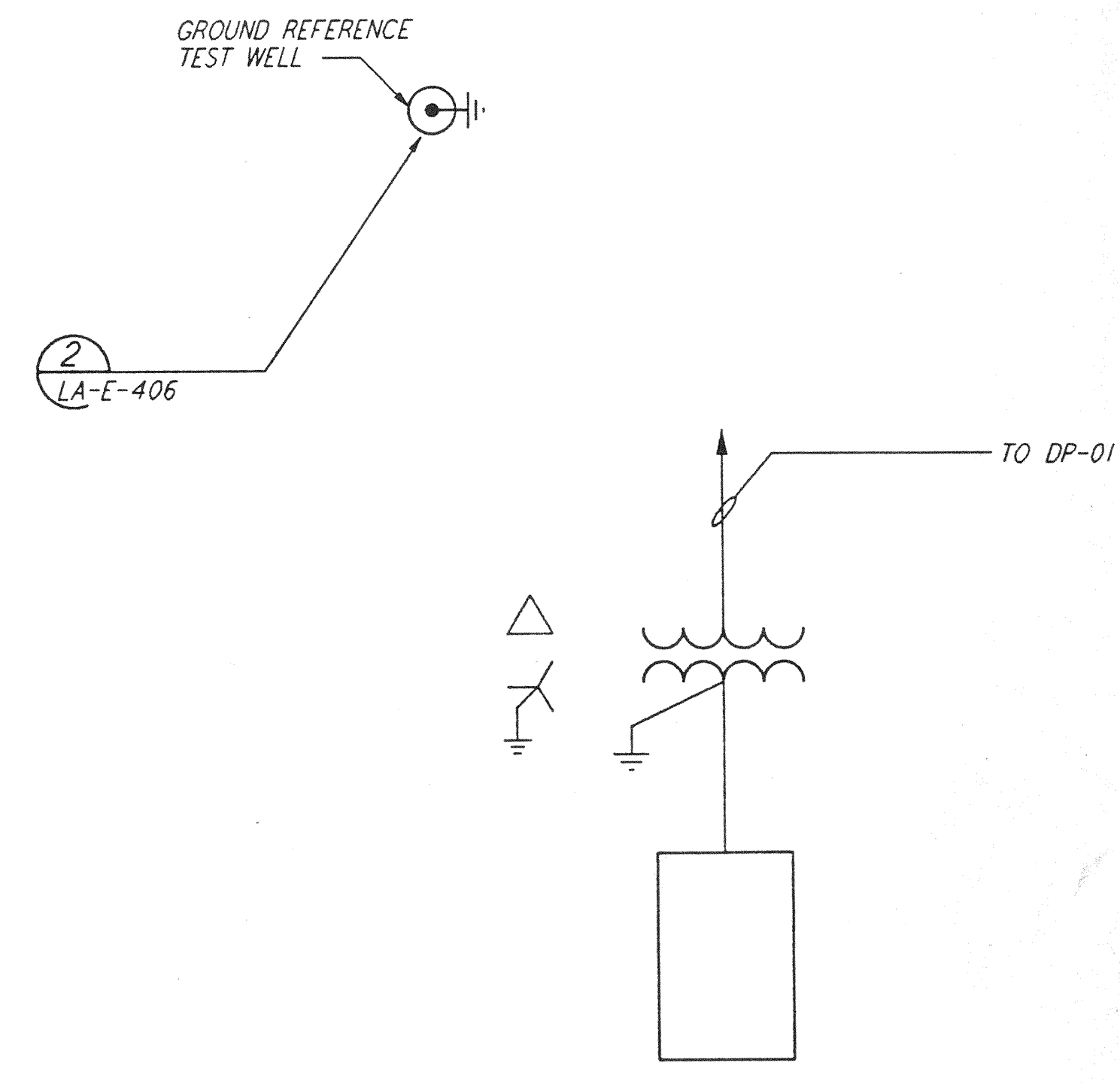
1. FOR GENERAL NOTES SEE DWG. LA-E-103.
2. CONNECT GROUNDING CONDUCTOR TO REBAR (BY OTHERS) AT BOTTOM OF FOUNDATION. REBAR SHALL BE AT LEAST 20 FEET LONG.
3. GROUNDING MAT FOR PERSONNEL PROTECTION SHALL BE A PREFABRICATED 4'-0" X 6'-0" MAT WITH A 6" X 6" GRID, 40% CONDUCTIVITY COPPERWELD, WITH CENTER WIRE # 1/0 AWG, ERICO MFR. CABLE TO MESH TYPE PT, MOLD PTC-102C, WELD METAL #65.
4. GROUNDING MAT SHALL BE INSTALLED 12" DEEP MIN. ADJACENT TO HIGH VOLTAGE PRIMARY SIDE.
5. SEE CIVIL DRAWING LA-C-021 FOR ACTUAL LOCATION OF CHILLERS, PUMPS AND TRANSFORMER.
6. SEE SPECIFICATION SECTION 16670 FOR LIGHTNING PROTECTION MATERIAL.
7. GROUND CONNECTION TO STRUCTURAL STEEL SHALL BE EXOTHERMIC WELD TYPE, AND APPROPRIATE FOR THE CABLE AND STRUCTURAL STEEL.
8. COIL AND TAPE GROUND CONDUCTOR AT TANK FOUNDATION, FOR FUTURE CONNECTION BY TANK VENDOR.



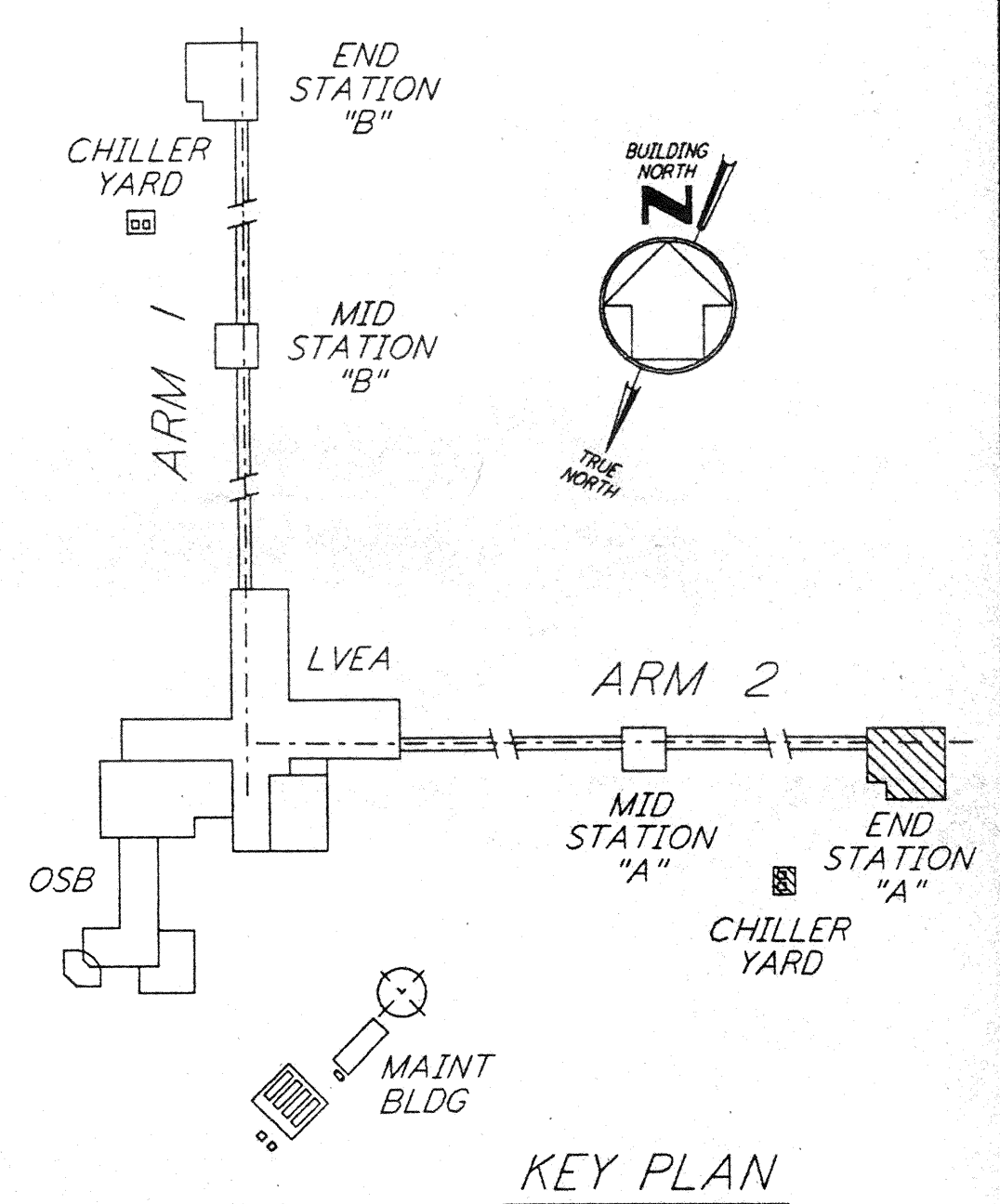
GROUNDING SCHEMATIC FOR CDSAC-01 PANEL



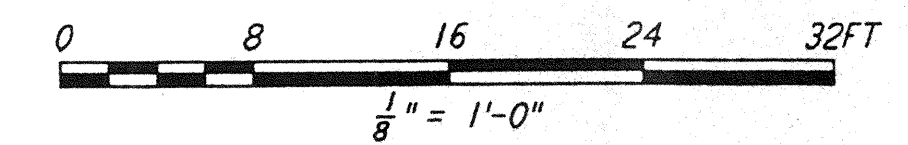
GROUNDING CHILLER PLAN



GROUNDING SCHEMATIC FOR RECEPTACLE PANEL RP-01

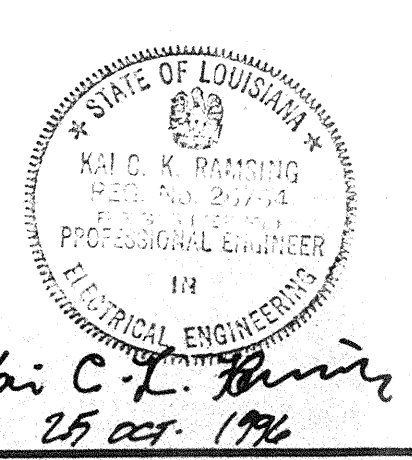


KEY PLAN



NO.	DATE	BY	CHKD	ENGR	PROJ	DESCRIPTION

ISSUED FOR CONSTRUCTION	
DRAWN	M. M. 11-15-96
CHECKED	JCL 7-24-96
ENGINEER	
PROJ	



**PARSONS**  
 100 WEST WALNUT STREET  
 PASADENA, CALIFORNIA

**LIGO**  
 CALIFORNIA INSTITUTE OF TECHNOLOGY  
 MASSACHUSETTS INSTITUTE OF TECHNOLOGY

LASER INTERFEROMETER  
 GRAVITATIONAL-WAVE OBSERVATORY  
 SITE NO. 2 - LIVINGSTON, LOUISIANA

TITLE	SCALE	CONTRACT NUMBER	PROJECT NUMBER
ELECTRICAL END STATION A LIGHTNING & GROUNDING PLAN	AS NOTED	PPI 50969	8094
DRAWING NO.	SHEET NUMBER	REVISIONS	
LA-E-202	LA-E-202		

L160-D961026 -00-0 | L160LAF3.BDR