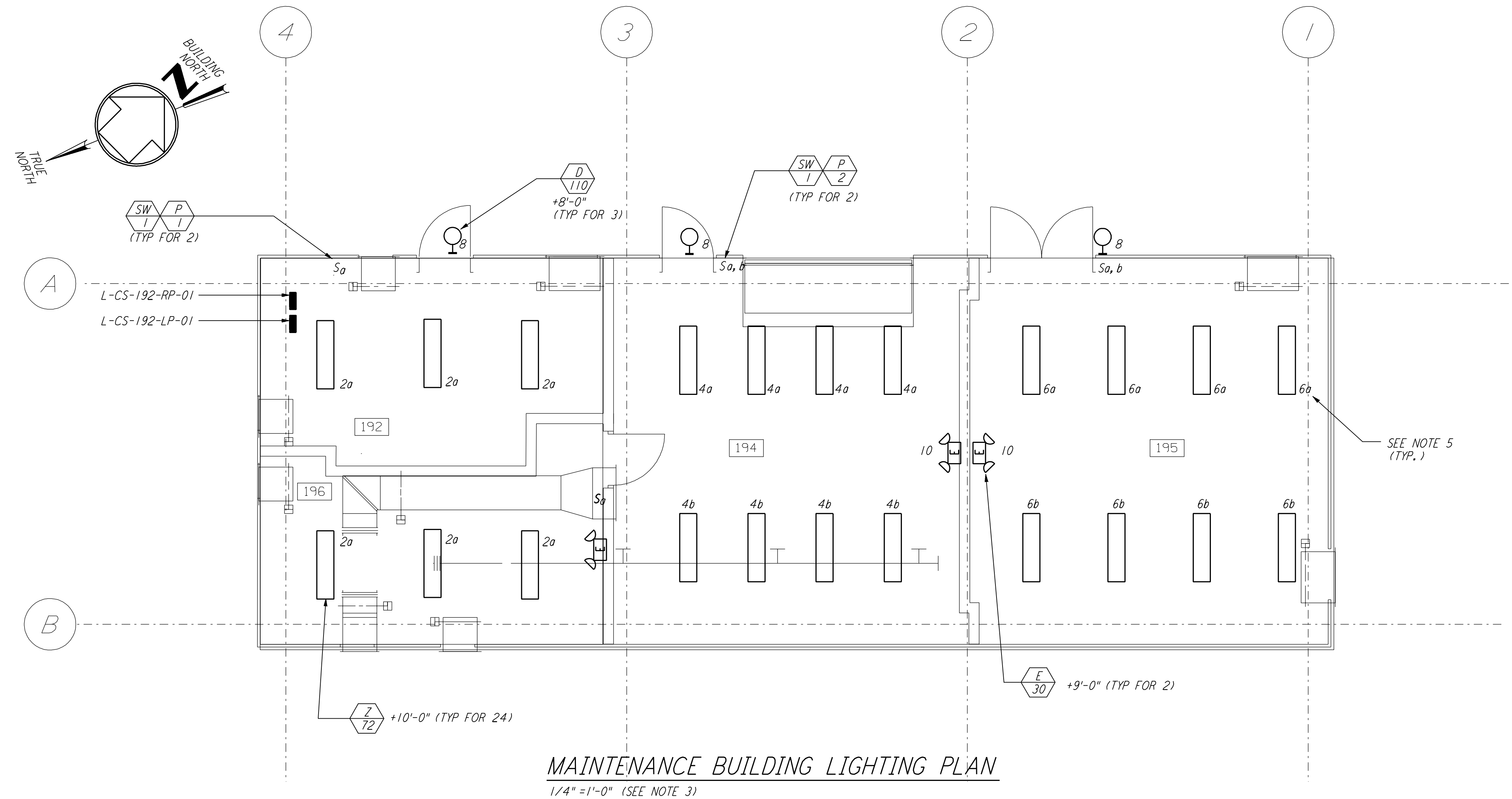


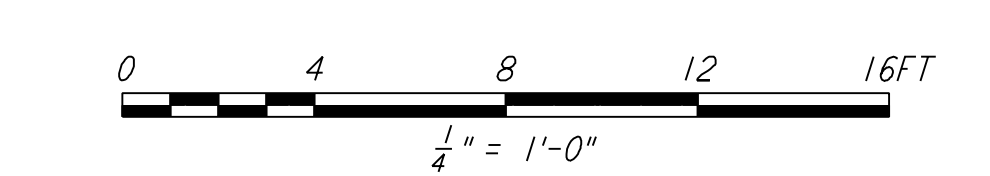
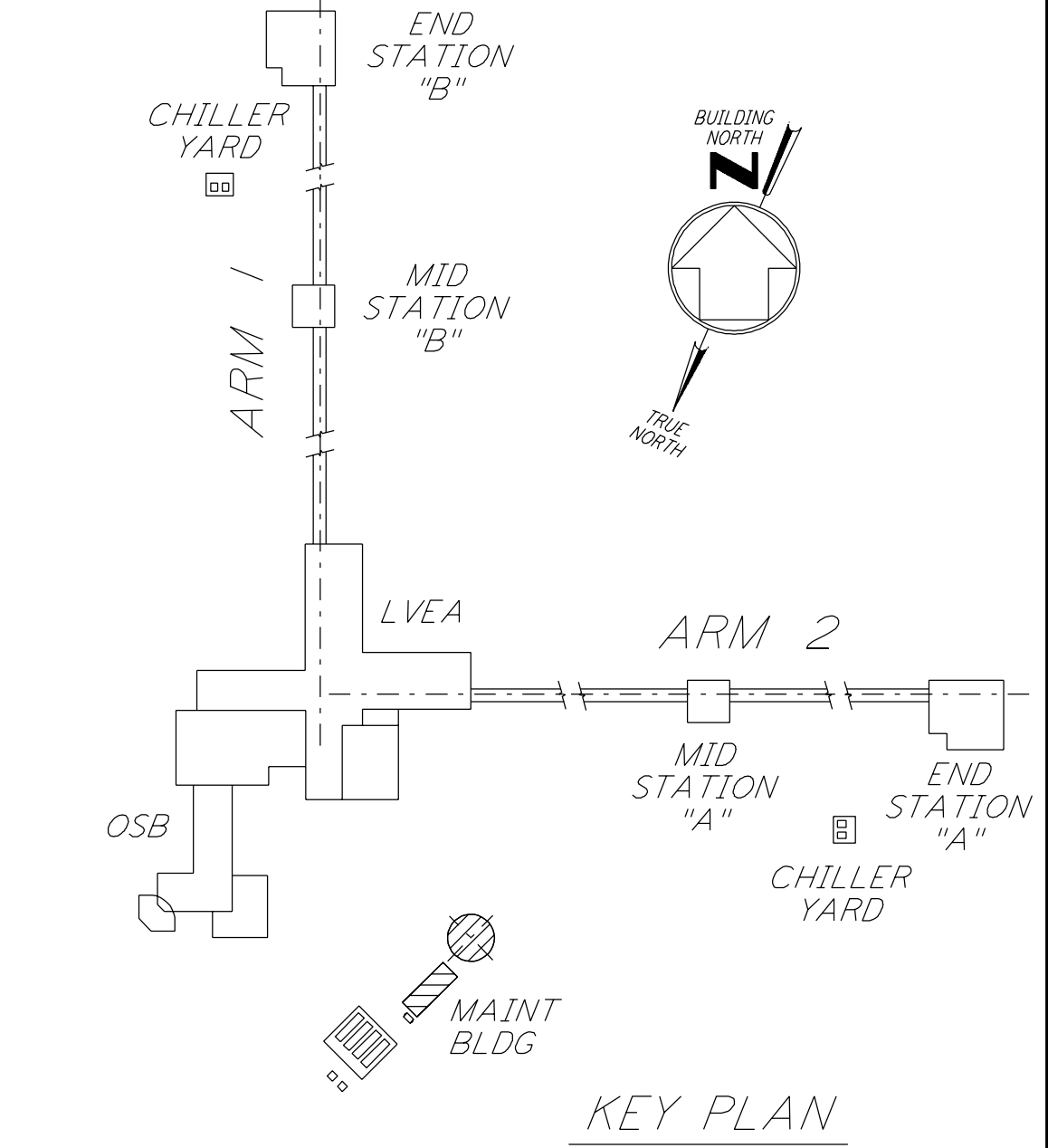
PANEL L-CS-192-RP-01		LOCATION TOP MOUNTING SURFACE		PHASE 3		WIRE 3		FEEDER		BUS 100A		VOLTS 208Y/120V	
FED FROM	CKT #	PHASE	WIRE SIZE	BKR	VOLT AMPS	PHASE LOAD (VA)	VOLT AMPS	BKR	WIRE SIZE	POLES	LOAD SERVED	CKT	
L-CS-192-LP-01	1, 3, 5												
1	F. W. HEAT TRACE (GFCI)	1	1	20	500	500		20	1	2	SPARE	2	
3	P. W. HEAT TRACE (GFCI)	3	1	20	200	200	1080	20	1	4	RECEPTS RM 192, 196	4	
5	RECEPTS OUTSIDE (GFCI)	5	1	20	720	720	720	20	1	6	RECEPTS RM 194	6	
7	SPARE	7	2	20		1800	1080	20	1	8	RECEPTS RM 194, 195	8	
9		9	-	-	-		900	20	1	10	RECEPTS RM 195	10	
11	SPACE	11	-	-	-		200	15	1	12	HVAC CONTROLS CP04, CP05	12	
13		13	-	-	-								
15		15	-	-	-								
17		17	-	-	-								
19		19	-	-	-								
21		21	-	-	-								
23		23	-	-	-								
25		25	-	-	-								
27		27	-	-	-								
29		29	-	-	-								
31		31	-	-	-								
33		33	-	-	-								
35		35	-	-	-								
37		37	-	-	-								
39		39	-	-	-								
41		41	-	-	-								
TOTAL						1580	2180	1640					
TOTAL CONNECTED LOAD (VA)						5400							
						(AMPS)							

PANEL L-CS-192-LP-01		LOCATION TOP MOUNTING SURFACE		PHASE 3		WIRE 4		FEEDER 4#1 & 1#6 GND		BUS 100A		VOLTS 480Y/277V	
FED FROM	CKT #	PHASE	WIRE SIZE	BKR	VOLT AMPS	PHASE LOAD (VA)	VOLT AMPS	BKR	WIRE SIZE	POLES	LOAD SERVED	CKT	
L-CS-192-RP-01	TBD												
1	L-CS-192-RP-01	1	3	30	15000	5000 288	288	15	1	2	LIGHTING RM 192, 196	2	
3		3	-	-	-	5000 864	864	15	1	4	LIGHTING RM 194	4	
5		5	-	-	-	5000 976	576	15	1	6	LIGHTING RM 195	6	
7	HEATER L-CS-195-HT-01	7	1	15	1500	1500 330	330	15	1	8	LIGHTING OUTSIDE	8	
9	HEATER L-CS-195-HT-02	9	1	15	1500	1500 60	60	15	1	10	EMERGENCY LIGHTING	10	
11	HEATER L-CS-196-HT-03	11	1	15	1500	1500 1500	1500	15	1	12	HEATER L-CS-196-HT-04	12	
13	SPARE	13	3	15				15	1	14	SPARE	14	
15		15	-	-	-			15	1	16	SPARE	16	
17		17	-	-	-			15	1	18	SPARE	18	
19	L-CS-191-AH-05	19	3	20	1500	500				20	SPACE	20	
21		21	-	-	-	500				22	SPACE	22	
23		23	-	-	-	500				24	SPACE	24	
25		25	-	-	-								
27		27	-	-	-								
29		29	-	-	-								
31		31	-	-	-								
33		33	-	-	-								
35		35	-	-	-								
37		37	-	-	-								
39		39	-	-	-								
41		41	-	-	-								
TOTAL						7618	7924	9076					
TOTAL CONNECTED LOAD (VA)						24618							
						(AMPS)							



NOTES:

- FOR GENERAL NOTES AND REFERENCE DWG SEE LA-E-103.
- PANEL L-CS-192-RP-01 SHALL BE SQUARE D CLASS 7400 MINI-POWER-ZONE. INTEGRAL 15KVA 3Ø TRANSFORMER, 12-POLE, TYPE 00B BREAKERS.
- ALL LIGHTING CIRCUITS SHOWN ON THE LIGHTING PLAN ARE FROM PANEL L-CS-192-LP-01.
- ALL RECEPTACLE CIRCUITS SHOWN ON THE POWER PLAN ARE FROM PANEL L-CS-192-RP-01 UNLESS OTHERWISE NOTED.
- CIRCUITS SHOWN FEEDING THESE ITEM ARE FROM PANEL L-CS-192-LP-01.



not be reproduced, copied, loaned, exhibited, or used in any other way, except by written consent from PARSONS to the borrower.

This document and the design it covers are the property of PARSONS. They are loaned only with the borrower's expressed written agreement that they will

ISSUED FOR CONSTRUCTION	AS-BUILT DRAWINGS
DRAWN M. M. 11-15-96 CHECKED JCL 7-24-96 ENGINEER KCR 10-25-96 PROJ T. D. M. 11-15-96	ISSUED FOR AS-BUILT

REVISIONS
1 8-7-98 JE

REFERENCES

PARSONS
 100 WEST WALNUT STREET
 PASADENA, CALIFORNIA

LIGO
 CALIFORNIA INSTITUTE OF TECHNOLOGY
 MASSACHUSETTS INSTITUTE OF TECHNOLOGY

LASER INTERFEROMETER
 GRAVITATIONAL-WAVE OBSERVATORY
 SITE NO. 2 - LIVINGSTON, LOUISIANA

ELECTRICAL CORNER STATION CHILLER PLANT & MAINT BLDG POWER & LIGHTING PLANS

AS NOTED PP150969 8094
LA-E-113

LIGO-D961015-01-0