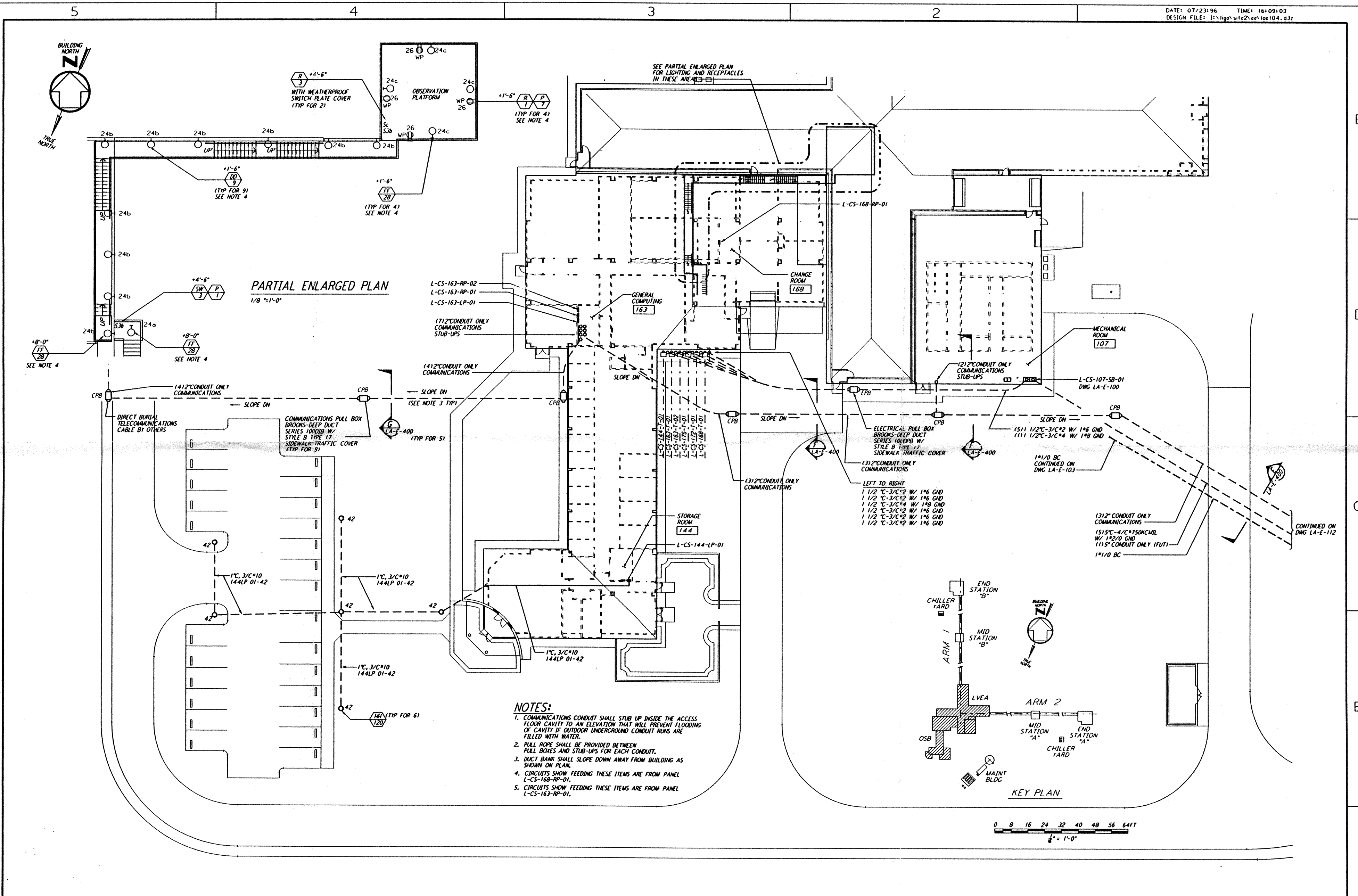
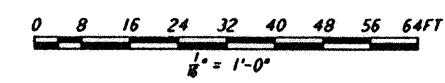
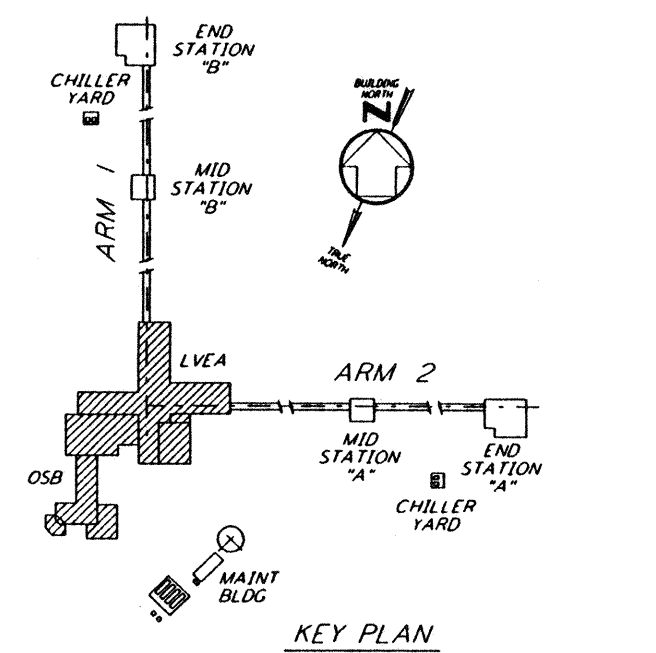


This document and the design it covers are the property of PARSONS. They are loaned only with the borrower's expressed written agreement that they will not be reproduced, copied, loaned, exhibited, or used in any other way, except by written consent from PARSONS to the borrower.



- NOTES:**
1. COMMUNICATIONS CONDUIT SHALL STUB UP INSIDE THE ACCESS FLOOR CAVITY TO AN ELEVATION THAT WILL PREVENT FLOODING OF CAVITY IF OUTDOOR UNDERGROUND CONDUIT RUNS ARE FILLED WITH WATER.
  2. PULL ROPE SHALL BE PROVIDED BETWEEN PULL BOXES AND STUB-UPS FOR EACH CONDUIT.
  3. DUCT BANK SHALL SLOPE DOWN AWAY FROM BUILDING AS SHOWN ON PLAN.
  4. CIRCUITS SHOW FEEDING THESE ITEMS ARE FROM PANEL L-CS-168-RP-01.
  5. CIRCUITS SHOW FEEDING THESE ITEMS ARE FROM PANEL L-CS-163-RP-01.



NO.	DATE	BY	CHKD	ENGR	PROJ	DESCRIPTION
B	7-24-96	MM	JCL		TDW	ISSUED FOR BID
A	6-14-96	MM	JCL	KR	TDW	FINAL DESIGN REVIEW

DRAWN	M. M.
CHECKED	
ENGINEER	
PROJ	

**PARSONS**  
 100 WEST WALNUT STREET  
 PASADENA, CALIFORNIA

**LIGO**  
 CALIFORNIA INSTITUTE OF TECHNOLOGY  
 MASSACHUSETTS INSTITUTE OF TECHNOLOGY

**LASER INTERFEROMETER  
 GRAVITATIONAL-WAVE OBSERVATORY  
 SITE NO. 2 - LIVINGSTON, LOUISIANA**

TITLE: **ELECTRICAL  
 CORNER STATION  
 POWER & LIGHTING  
 PARKING & OBSERVATION PLAN**

AS NOTED PPI50969 8094

SHEET NUMBER: **LA-E-104**

PROJECT NUMBER: **LIGO-D961006-B-O**

Tue Jul 23 16:07:45 1996 s3-v18b2 J:\PLOTS\QUEUES\18B2\EE104.PRF