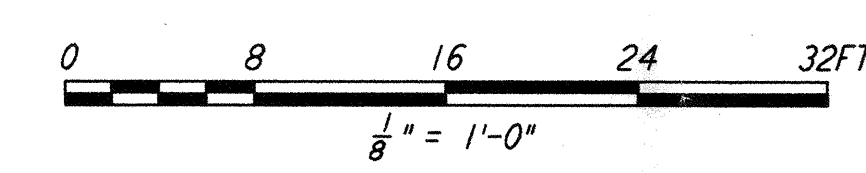
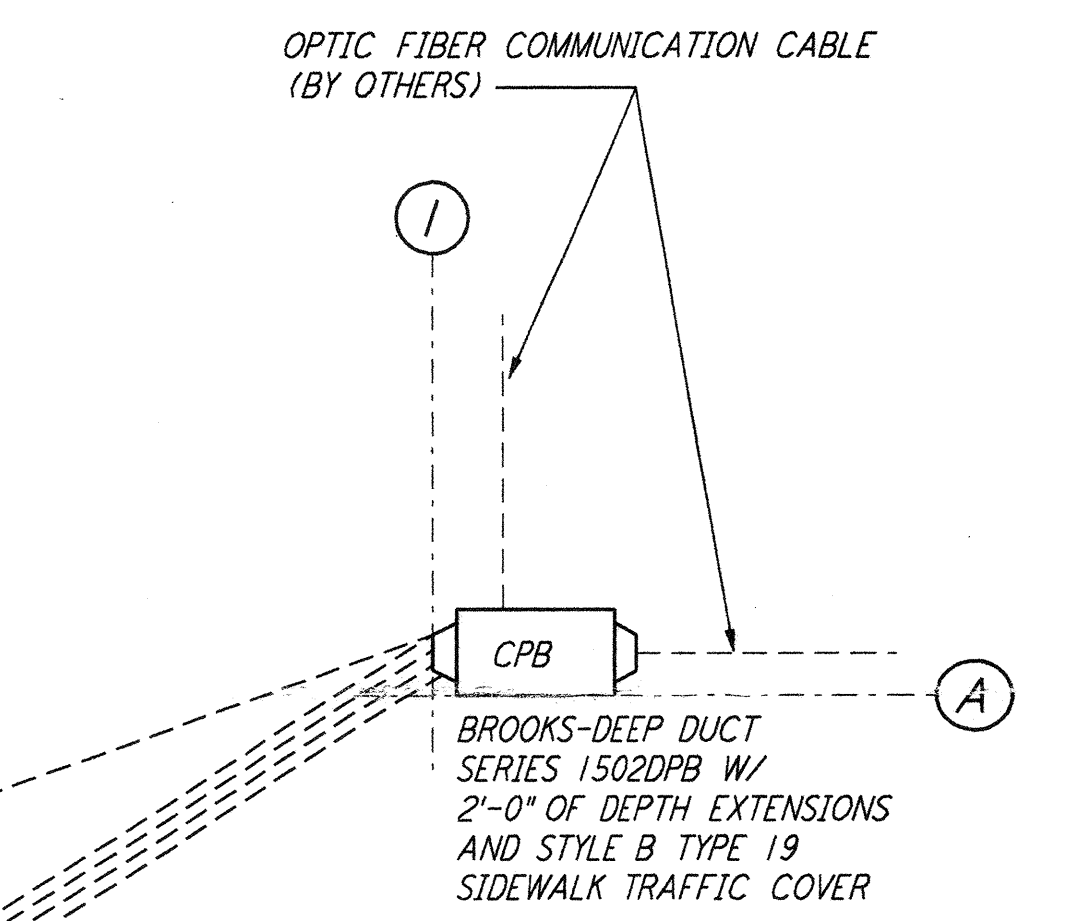
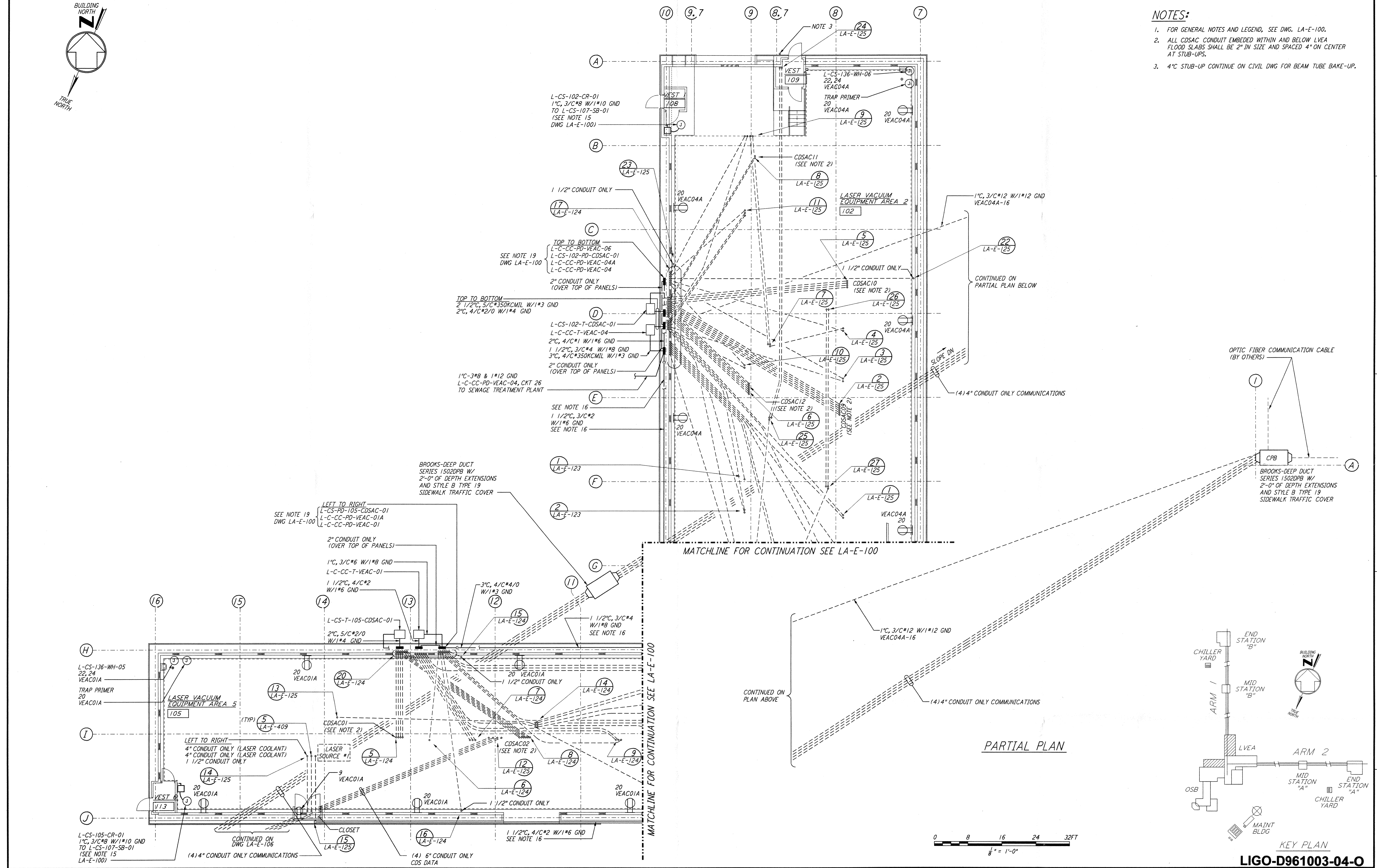


- NOTES:**
- FOR GENERAL NOTES AND LEGEND, SEE DWG. LA-E-100.
 - ALL CDSAC CONDUIT EMBEDDED WITHIN AND BELOW LVEA FLOOR SLABS SHALL BE 2" IN SIZE AND SPACED 4" ON CENTER AT STUB-UPS.
 - 4" STUB-UP CONTINUE ON CIVIL DWG FOR BEAM TUBE BAKE-UP.

not be reproduced, copied, loaned, exhibited, or used in any other way, except by written consent from PARSONS to the borrower.

This document and the design it covers are the property of PARSONS. They are loaned only with the borrower's expressed written agreement that they will



NO.	DATE	BY	CHKD	ENGR	PROJ	DESCRIPTION
4	8-7-98	JE	RY	dlc	WW	ISSUED FOR AS-BUILT
3	4-21-97	J. G.	KR	KR	TDM	REVISED FOR CDS AND VAC. EQUIP.
2	4-4-97	M. M.	KR	KR	TDM	GENERAL REVISIONS
1	3-21-97	J. G.	BK	KCR	TDM	GENERAL REVISIONS

ISSUED FOR CONSTRUCTION
 DRAWN M. M. 11-15-96
 CHECKED J. C. L. 7-24-96
 ENGINEER K. C. P. 10-25-96
 PROJ 7. D. M. 11-15-96

AS-BUILT DRAWINGS

PARSONS

100 WEST WALNUT STREET
 PASADENA, CALIFORNIA

LIGO

CALIFORNIA INSTITUTE OF TECHNOLOGY
 MASSACHUSETTS INSTITUTE OF TECHNOLOGY

LASER INTERFEROMETER
 GRAVITATIONAL-WAVE OBSERVATORY
 SITE NO. 2 - LIVINGSTON, LOUISIANA

ELECTRICAL CORNER STATION LVEA AREAS 102, 105 RECEPTACLE & POWER PLAN

SCALE: AS NOTED
 CONTRACT NUMBER: PPI50969
 PROJECT NUMBER: 8094

SHEET NUMBER: **LA-E-101**