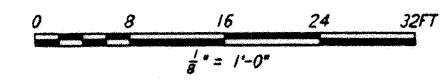
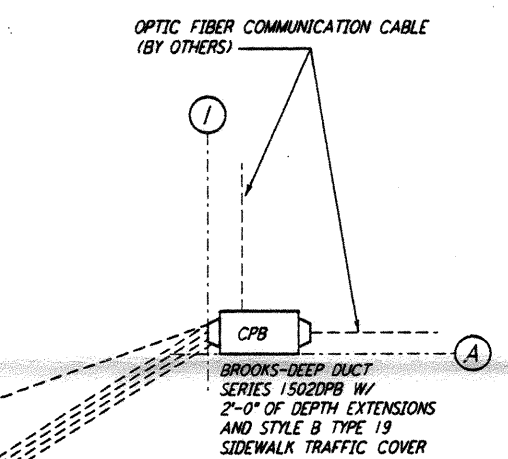
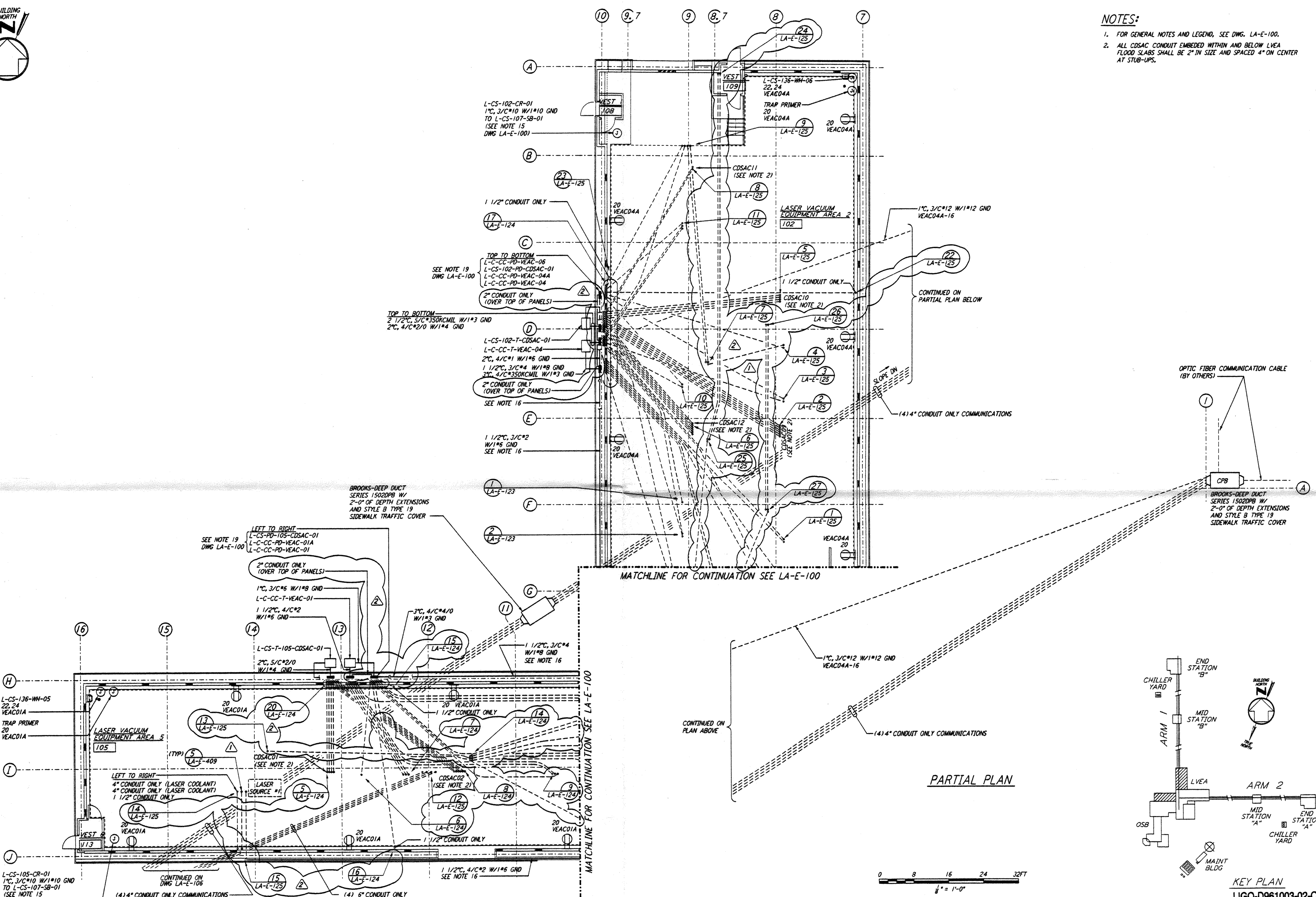
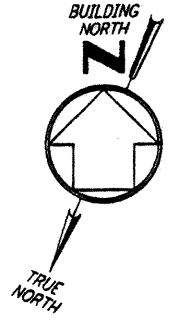


NOTES:

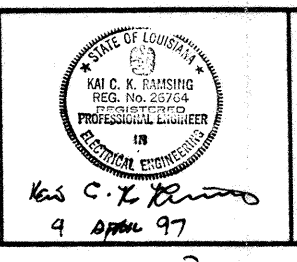
- FOR GENERAL NOTES AND LEGEND, SEE DWG. LA-E-100.
- ALL CDSAC CONDUIT EMBEDDED WITHIN AND BELOW LVEA FLOOR SLABS SHALL BE 2" IN SIZE AND SPACED 4" ON CENTER AT STUB-UPS.



This document and the design it covers are the property of PARSONS. They are loaned only with the borrower's expressed written agreement that they will not be reproduced, copied, loaned, exhibited, or used in any other way, except by written consent from PARSONS to the borrower.

NO.	DATE	BY	CHKD	ENGR	PROJ	DESCRIPTION
2	4-4-97	M. M.				GENERAL REVISIONS
1	3-27-97	J. G.	BK	KCR	TPM	GENERAL REVISIONS

ISSUED FOR CONSTRUCTION	
DRAWN	M. M. 71-15-96
CHECKED	J. C. L. 7-24-96
ENGINEER	K. C. R. 10-25-96
PROJ	T. D. M. 11-15-96



PARSONS

100 WEST WALNUT STREET
PASADENA, CALIFORNIA

LIGO

CALIFORNIA INSTITUTE OF TECHNOLOGY
MASSACHUSETTS INSTITUTE OF TECHNOLOGY

LASER INTERFEROMETER
GRAVITATIONAL-WAVE OBSERVATORY
SITE NO. 2 - LIVINGSTON, LOUISIANA

ELECTRICAL
CORNER STATION
LVEA AREAS 102, 105
RECEPTACLE & POWER PLAN

AS NOTED PPI50969 8094

LA-E-101

P:\LIGO\LA-E-101.dwg 11/15/97 11:48:13 AM