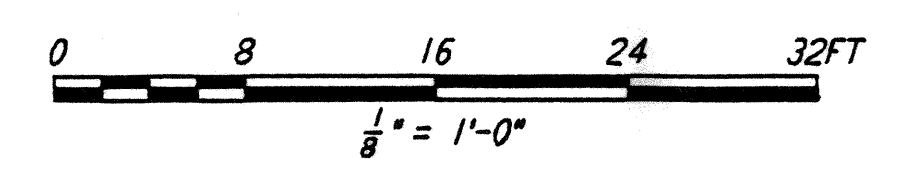
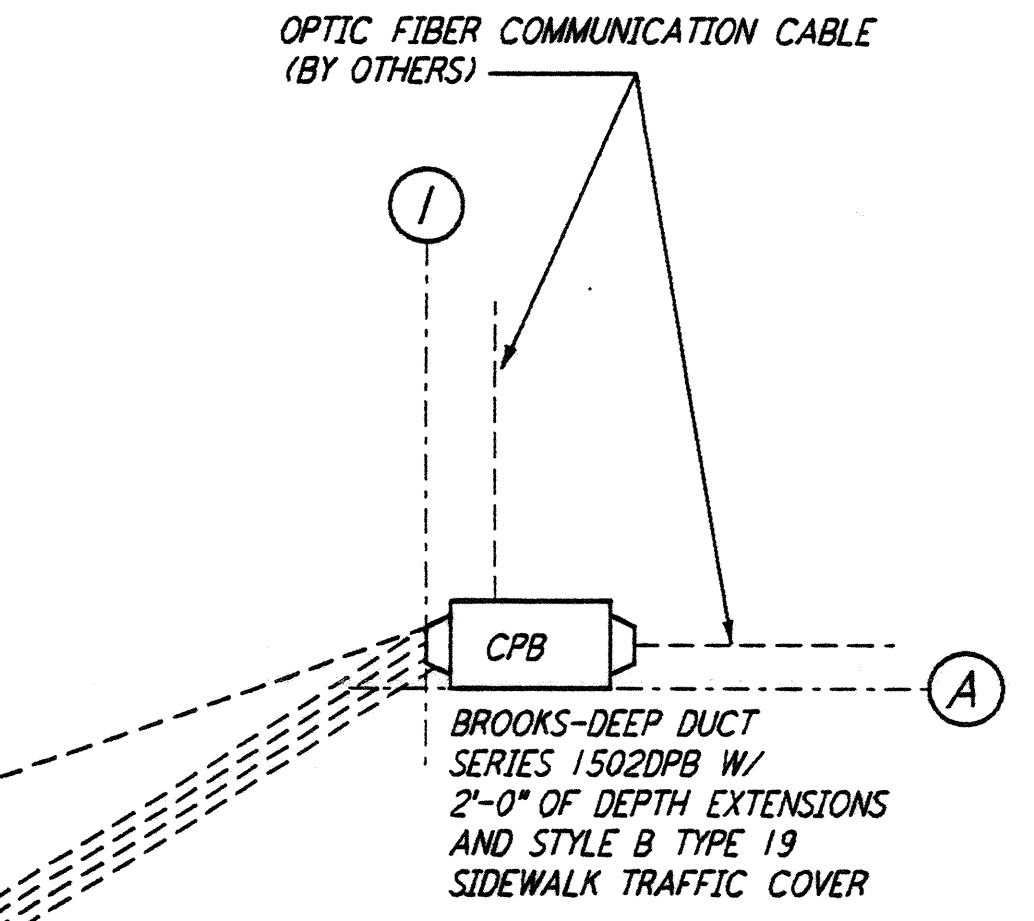
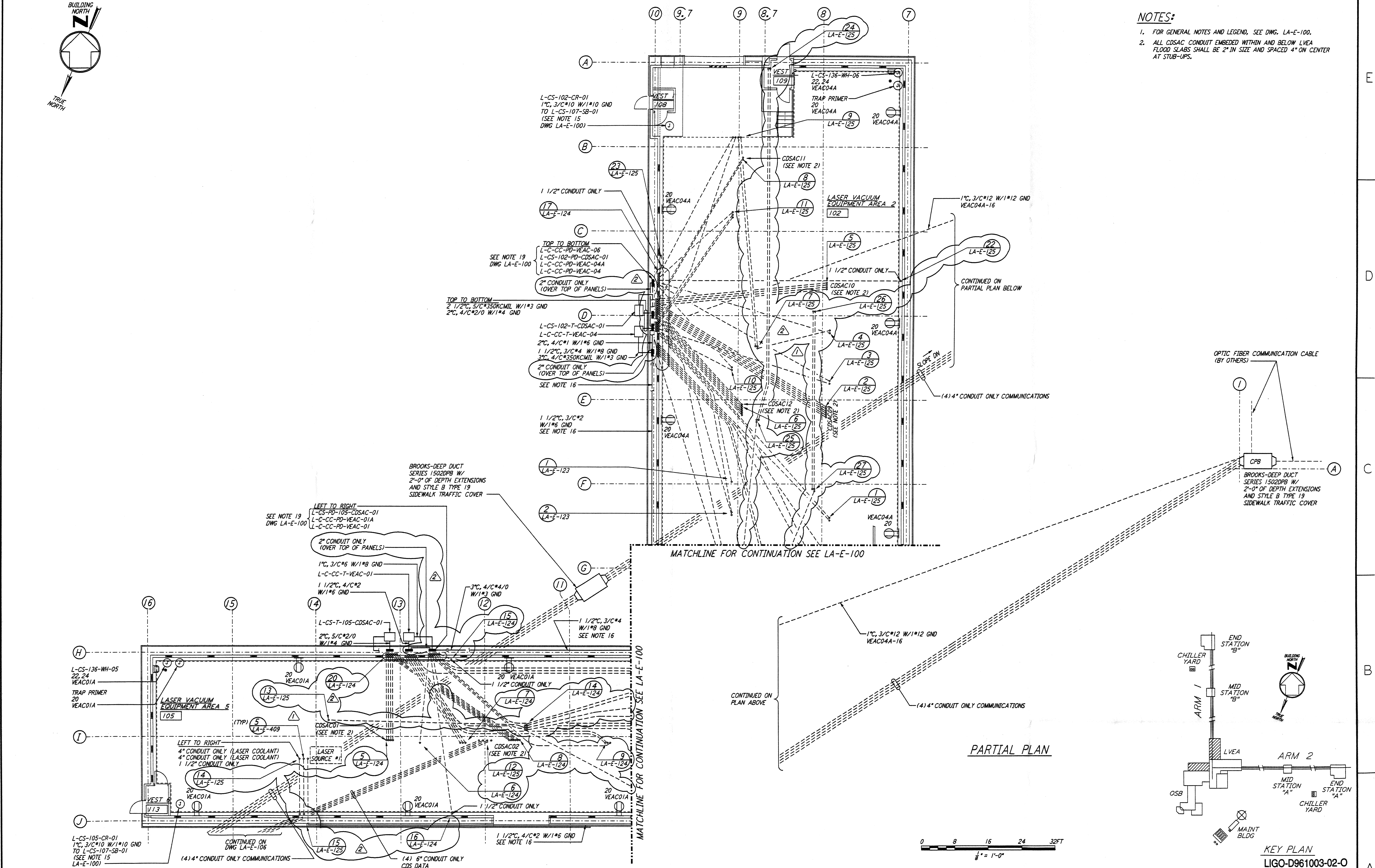


- NOTES:**
- FOR GENERAL NOTES AND LEGEND, SEE DWG. LA-E-100.
 - ALL CDSAC CONDUIT EMBEDDED WITHIN AND BELOW LVEA FLOOD SLABS SHALL BE 2" IN SIZE AND SPACED 4" ON CENTER AT STUB-UPS.

not be reproduced, copied, loaned, exhibited, or used in any other way, except by written consent from PARSONS to the borrower.

This document and the design it covers are the property of PARSONS. They are loaned only with the borrower's expressed written agreement that they will

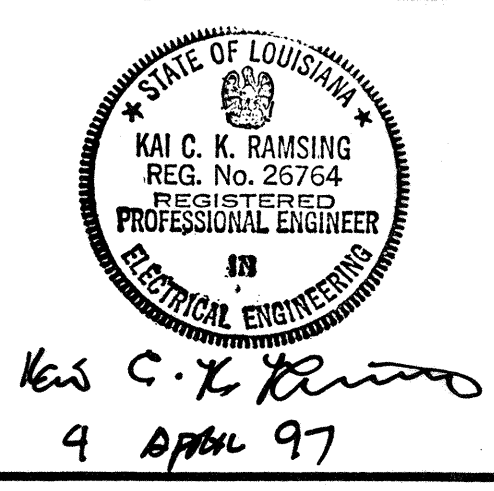


PARTIAL PLAN

KEY PLAN
 LIGO-D961003-02-0

NO.	DATE	BY	CHKD	ENGR	PROJ	DESCRIPTION
2	4-4-97	M. M.				GENERAL REVISIONS
1	3-21-97	J. G.	BK	KCR	TDM	GENERAL REVISIONS

ISSUED FOR CONSTRUCTION		
DRAWN	M. M.	11-15-96
CHECKED	J. C. L.	7-24-96
ENGINEER	K. C. R.	10-25-96
PROJ	T. D. M.	11-15-96



PARSONS

100 WEST WALNUT STREET
 PASADENA, CALIFORNIA

LIGO

CALIFORNIA INSTITUTE OF TECHNOLOGY
 MASSACHUSETTS INSTITUTE OF TECHNOLOGY

LASER INTERFEROMETER
 GRAVITATIONAL-WAVE OBSERVATORY
 SITE NO. 2 - LIVINGSTON, LOUISIANA

TITLE: ELECTRICAL CORNER STATION LVEA AREAS 102, 105 RECEPTACLE & POWER PLAN

AS NOTED PP150969 8094

LA-E-101