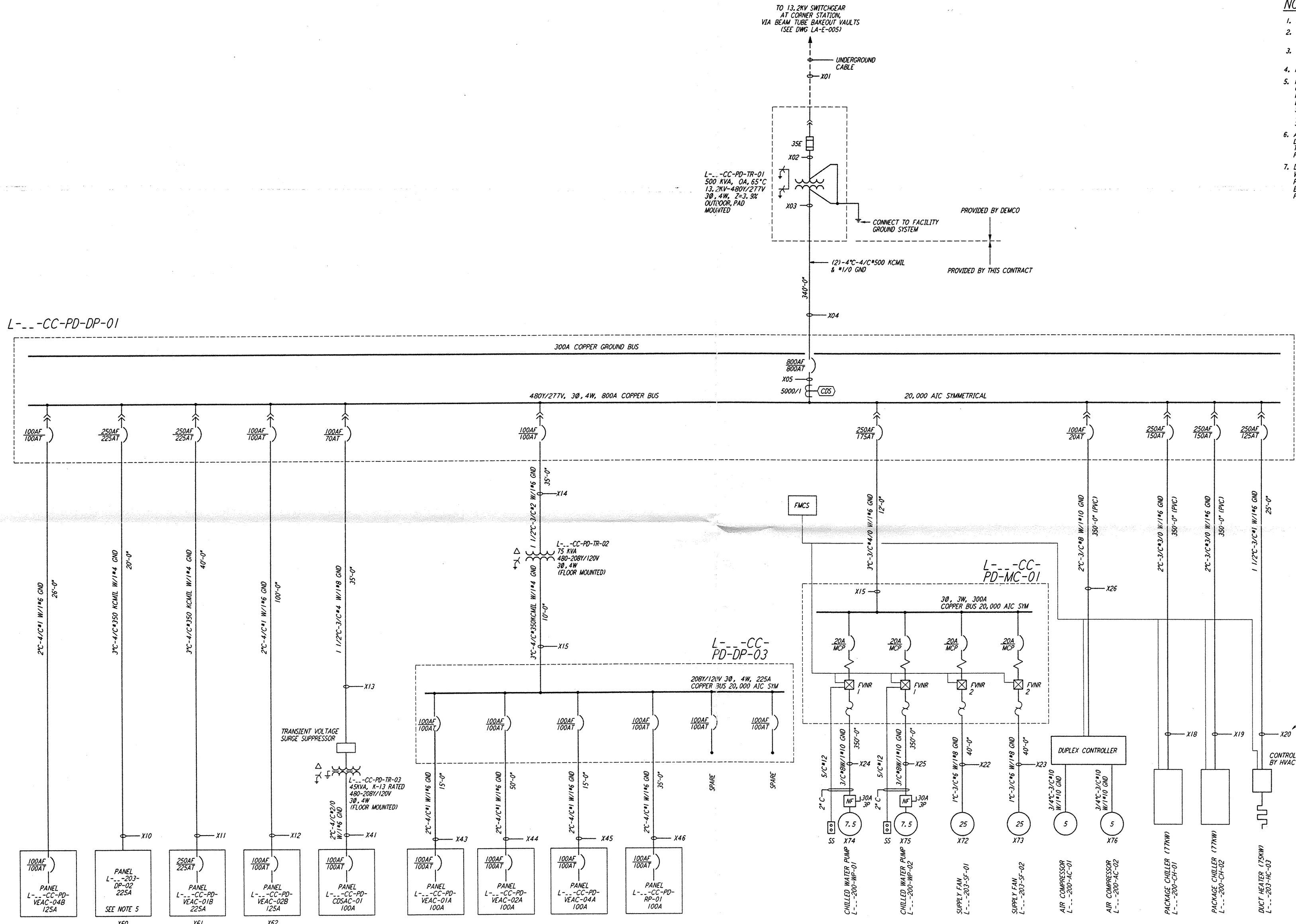


- NOTES:**
- FOR LEGEND AND GENERAL NOTES SEE DWG LA-E-005.
 - ALL CONDUCTORS ARE COPPER UNLESS OTHERWISE NOTED.
 - ALL TRANSFORMER WINDINGS ARE ALUMINUM UNLESS OTHERWISE NOTED.
 - NOT USED.
 - PANEL DP-02 SHALL BE PROVIDED WITH REMOTE CONTROLLED CIRCUIT BREAKERS FOR ALL LIGHTING CIRCUITS (9 CIRCUITS). PROVIDE 3 SPARE SINGLE-POLE 20A REMOTE CONTROL CIRCUIT BREAKERS. REMOTE CONTROL TRANSCEIVER AND BREAKERS SHALL BE SQUARE D POWERLINK OR APPROVAL EQUAL. TRANSCEIVER SHALL BE COMPATIBLE WITH THE FMC'S IN SPECIFICATION SECTION 13001.
 - ALL CIRCUIT BREAKERS SHALL BE PROVIDED WITH LOCKING/LOCKABLE ACCESSORIES TO ENSURE THAT CIRCUITS ARE ENERGIZED BY AUTHORIZED PERSONNEL ONLY.
 - DISTRIBUTION AND LIGHTING PANELS SHALL BE FURNISHED WITH LOCKABLE DOORS. CIRCUIT BREAKERS SHALL BE PROVIDED WITH LOCKING/LOCKABLE ACCESSORIES TO ENSURE THAT CIRCUITS ARE ENERGIZED BY AUTHORIZED PERSONNEL ONLY.

not be reproduced, copied, loaned, exhibited, or used in any other way, except by written consent from PARSONS to the borrower.

This document and the design it covers are the property of PARSONS. They are loaned only with the borrower's expressed written agreement that they will



ANALYTIC STUDY NOTES:

- X12 REPRESENTS THE ANALYTIC NODE NUMBER, AND CORRESPONDS WITH THE ETAP VERSION 7.301 ANALYTIC STUDY.

NODE NUMBERING SCHEDULE

BUILDING	DESIGNATOR	X
END, ARM A	EA	4
END, ARM B	EB	6

REPLACE X WITH THE NUMBER AT RIGHT TO IDENTIFY THE SPECIFIC NODE IN A SPECIFIC BUILDING.

LIGO-D961001-A-O

NO.	DATE	BY	CHKD	ENGR	PROJ	DESCRIPTION
A	6-14-96	JCL	TOM			FINAL DESIGN REVIEW

DRAWN	
CHECKED	M. M.
ENGINEER	
PROJ	

PARSONS

100 WEST WALNUT STREET
PASADENA, CALIFORNIA

LIGO

CALIFORNIA INSTITUTE OF TECHNOLOGY
MASSACHUSETTS INSTITUTE OF TECHNOLOGY

LASER INTERFEROMETER
GRAVITATIONAL-WAVE OBSERVATORY
SITE NO. 2 - LIVINGSTON, LOUISIANA

**ELECTRICAL
TYPICAL END STATION
SINGLE LINE DIAGRAM**

SCALE: NONE CONTRACT NUMBER: PP150969 PROJECT NUMBER: 8094
SHEET NUMBER: LA-E-008 REVISIONS: A