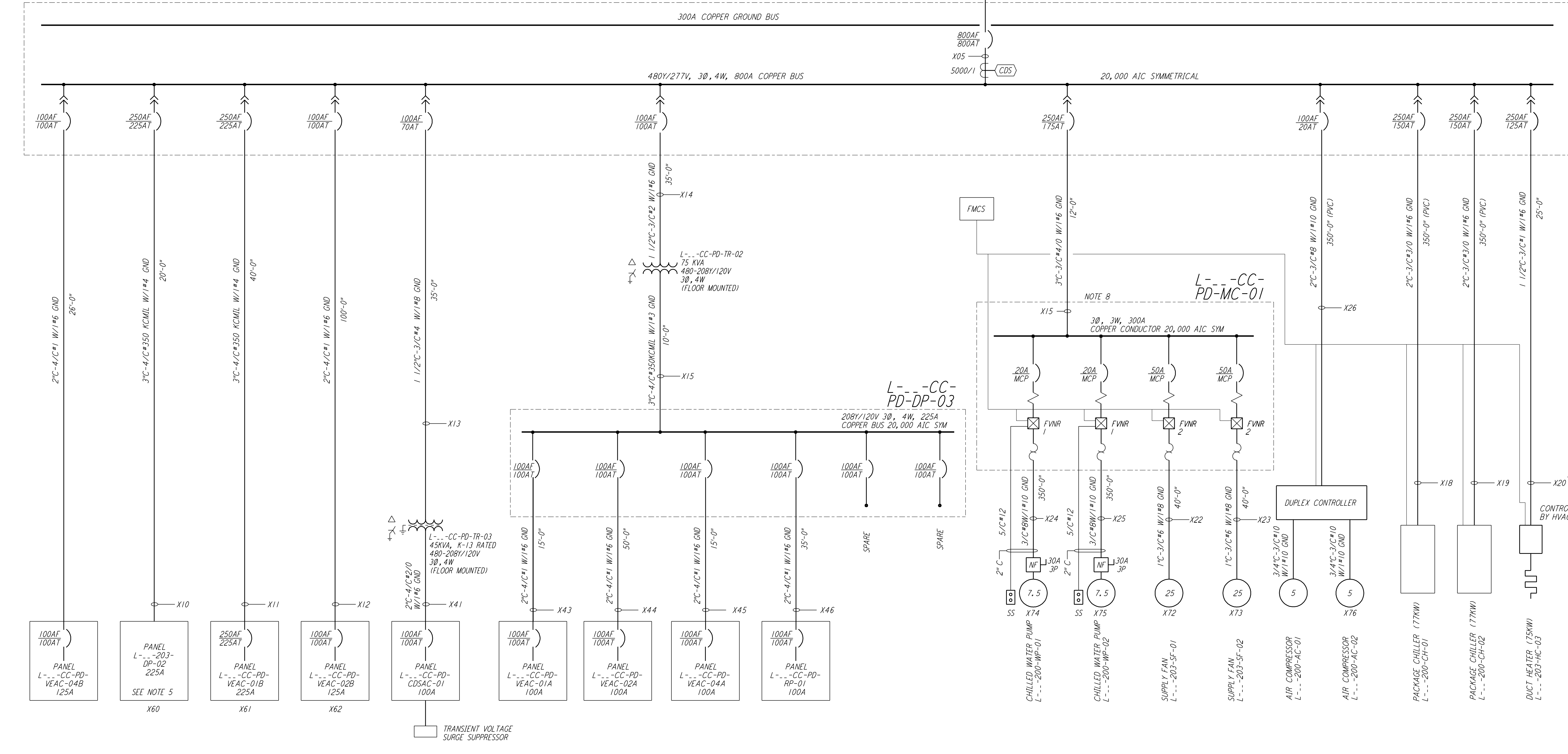


This document and the design it covers are the property of PARSONS. They are loaned only with the borrower's expressed written agreement that they will not be reproduced, copied, loaned, exhibited, or used in any other way, except by written consent from PARSONS to the borrower.

L---CC-PD-DP-01



NOTES:

- FOR LEGEND AND GENERAL NOTES SEE DWG LA-E-005.
- ALL CONDUCTORS ARE COPPER UNLESS OTHERWISE NOTED.
- ALL TRANSFORMER WINDINGS ARE ALUMINUM UNLESS OTHERWISE NOTED.
- NOT USED.
- PANEL DP-02 SHALL BE PROVIDED WITH REMOTE CONTROLLED CIRCUIT BREAKERS FOR ALL LIGHTING CIRCUITS (9 CIRCUITS). PROVIDE 3 SPARE SINGLE-POLE 20A REMOTE CONTROL CIRCUIT BREAKERS. REMOTE CONTROL TRANSCEIVER AND BREAKERS SHALL BE SQUARE D POWERLINK OR APPROVAL EQUAL. TRANSCEIVER SHALL BE COMPATIBLE WITH THE FMCS IN SPECIFICATION SECTION 1.3001.
- ALL CIRCUIT BREAKERS SHALL BE PROVIDED WITH LOCKING/LOCKABLE ACCESSORIES TO ENSURE THAT CIRCUITS ARE ENERGIZED BY AUTHORIZED PERSONNEL ONLY.
- DISTRIBUTION AND LIGHTING PANELS SHALL BE FURNISHED WITH LOCKABLE DOORS. CIRCUIT BREAKERS SHALL BE PROVIDED WITH LOCKING/LOCKABLE ACCESSORIES TO ENSURE THAT CIRCUITS ARE ENERGIZED BY AUTHORIZED PERSONNEL ONLY.
- CUTLER HAMMER/ WESTINGHOUSE MULTI-PAK GROUP CONTROL TYPE MOTOR CONTROL CENTER.
- SEE DWG. LA-E-504 FOR TYPICAL TRANSFORMER GROUNDING DETAIL.

ANALYTIC STUDY NOTES:

- X12 REPRESENTS THE ANALYTIC NODE NUMBER, AND CORRESPONDS WITH THE ETAP VERSION 7.301 ANALYTIC STUDY.

NODE NUMBERING SCHEDULE

| BUILDING   | DESIGNATOR | X |
|------------|------------|---|
| END, ARM A | EA         | 4 |
| END, ARM B | EB         | 6 |

REPLACE X WITH THE NUMBER AT RIGHT TO IDENTIFY THE SPECIFIC NODE IN A SPECIFIC BUILDING.

| NO. | DATE    | BY    | CHKD  | ENGR | PROJ | DESCRIPTION                           |
|-----|---------|-------|-------|------|------|---------------------------------------|
| 1   | 2-28-97 | J. G. | B. K. | KCR  | TDM  | ISSUED FOR AS-BUILT GENERAL REVISIONS |
| 2   | 8-7-98  | JE    |       |      |      | ISSUED FOR AS-BUILT                   |

| ISSUED FOR CONSTRUCTION |                   |
|-------------------------|-------------------|
| DRAWN                   | M. M. 11-15-96    |
| CHECKED                 | J. C. L. 7-24-96  |
| ENGINEER                | K. C. R. 10-25-96 |
| PROJ                    | T. D. M. 11-15-96 |

**AS-BUILT DRAWINGS**

**PARSONS**  
 100 WEST WALNUT STREET  
 PASADENA, CALIFORNIA

**LIGO**  
 CALIFORNIA INSTITUTE OF TECHNOLOGY  
 MASSACHUSETTS INSTITUTE OF TECHNOLOGY

LASER INTERFEROMETER  
 GRAVITATIONAL-WAVE OBSERVATORY  
 SITE NO. 2 - LIVINGSTON, LOUISIANA

**ELECTRICAL TYPICAL END STATION SINGLE LINE DIAGRAM**

SCALE: NONE  
 CONTRACT NUMBER: PP150969  
 PROJECT NUMBER: 8094

SHEET NUMBER: **LA-E-008**

LIGO-D961001-02-0