

ABBREVIATIONS AND ACRONYMS

A/C -AIR CONDITIONER.
AC -ALTERNATING CURRENT, OR ACCESS CHAMBER.
AECIC -ASSOCIATION OF EDISON ILLUMINATING COMPANIES.
AFD -ADJUSTABLE FREQUENCY DRIVE.
AFI -ABOVE FINISHED FLOOR.
AFG -ABOVE FINISHED GRADE.
AHU -AIR HANDLING UNIT.
A.I.C. -AMPERE INTERRUPTING CAPACITY.
AL -ALUMINUM.
ANN -ANNUNCIATOR.
ANSI -AMERICAN NATIONAL STANDARDS INSTITUTE.
ANT -ANTENNA.
APPROX -APPROXIMATE.
ASME -AMERICAN SOCIETY OF MECHANICAL ENGINEERS.
ASTM -AMERICAN SOCIETY OF TESTING AND MATERIALS.
AR -AS REQUIRED.
ARC -ARC WELD.
ARCH -ARCHITECTURE.
ASD -ADJUSTABLE SPEED DRIVE.
ASTM -ASTHMETRICAL.
ATM -ATMOSPHERE.
ATS -AUTOMATIC TRANSFER SWITCH.
ATO -AUTOMATIC.
AWG -AMERICAN WIRE GAGE.
AX -AUXILIARY RELAY.
B -AND.
BAG -BARE ARMORED GROUND, UL LABELED.
BAT -BATTERY.
BC -BARE COPPER.
BD -BUS DUCT.
BHP -BRAKE HORSEPOWER.
BKR -BREAKER.
BLDG -BUILDING.
BOC -BOTTOM OF CONDUIT.
BOP -BOTTOM OF PIPE.
BTE -BEAM TUBE ENCLOSURE.
BTU -BRITISH THERMAL UNIT.
C -CONDUIT, PER SPECIFICATION, UL LABELED.
C -CENTER LINE.
CAD -COMPUTER AIDED DESIGN.
CAED -COMPUTER AIDED DESIGN AND DRAFTING.
CAP -CAPACITOR.
CB -CIRCUIT BREAKER.
CCTV -CLOSED CIRCUIT TELEVISION.
CCE -CONTRACTOR FURNISHED EQUIPMENT.
CCT -CIRCUIT.
CNTLR -CONTROLLER.
CO -CONDUIT ONLY.
COALX -COAXIAL CABLE.
COL -COLUMN.
CONC -CONCRETE.
CONN -CONNECTION.
CONT -CONTAINER.
CPB -COMMUNICATIONS PULL BOX.
CPU -CENTRAL PROCESSING UNIT.
CR -CONTROL RELAY.
CT -CURRENT TRANSFORMER.
CU -COPPER.
DB -DIRECT BURIED.
DC -DIRECT CURRENT.
DET -DETAIL.
DIA -DIAMETER.
DIAG -DIAGRAM.
DISC -DISCONNECT.
DN -DOWN.
DNA -DOES NOT APPLY.
DPDT -DOUBLE POLE DOUBLE THROW.
DPST -DOUBLE POLE SINGLE THROW.
DT -DOWNSHIFT, UL LABELED.
DNG -DRAWING.
°C -DEGREES CELSIUS (CENTIGRADE).
°F -DEGREES FAHRENHEIT.
E -EMERGENCY.
EA -EACH.
EL -ELEVATION.
ELEC -ELECTRIC.
ELU -EMERGENCY LIGHTING UNIT.
EMT -ELECTRICAL METALLIC TUBING, UL LABELED.
ENG -ENGINE.
EP -EXPLOSION PROOF, UL LABELED.
EPB -ELECTRICAL PULL BOX.
EPR -ETHYLENE PROPYLENE RUBBER (SYNTHETIC POLYMER) INSULATED, UL LABELED TO 35 KV, CERTIFIED TO AEC SPECIFICATION, ABOVE 35 KV DO NOT IDENTIFY AS EP.
EQUIP -EQUIPMENT.
ETC -ET CETERA.
EW -ELECTRIC WATER COOLER.
EXIST -EXISTING.
FA -FIRE ALARM.
FACP -FIRE ALARM CONTROL PANEL.
FC -FOOTCANDLE.
FEED -FEEDER.
FIG -FIGURE.
FIN GR -FINISH GRADE.
FIT -FITURE.
FLA -FULL LOAD AMPERES.
FLOD -FLOOD.
FLEX -FLEXIBLE CONDUIT, UL LABELED.
FLOR -FLOOR.
FM -FACTORY MUTUAL RESEARCH CORPORATION APPROVED AND LABELED FACTORY MUTUAL SYSTEM APPROVED, FM APPROVED, OR FL.
FMS -FIRE MANAGEMENT CONTROL SYS.
FREQ -FREQUENCY.
FT -FOOT.
FUT -FUTURE.
FVNR -FULL VOLTAGE NON-REVERSING.
FVR -FULL VOLTAGE REVERSING.
GA -GAGE (NOT GAUGE).
GALV -GALVANIZED.
GEN -GENERATOR.
GFE -GOVERNMENT FURNISHED EQUIPMENT.
GFIC -GROUND FAULT INTERRUPTER.
GFS -GROUND FAULT SENSOR.
GND -GROUND.
G.R. -GROUND RELAY.
GRN -GREEN INSULATED, UL LABELED TYPE TW CONDUCTOR WHEN WITH GND.
GRS -GALVANIZED RIGID STEEL CONDUIT, UL LABELED.

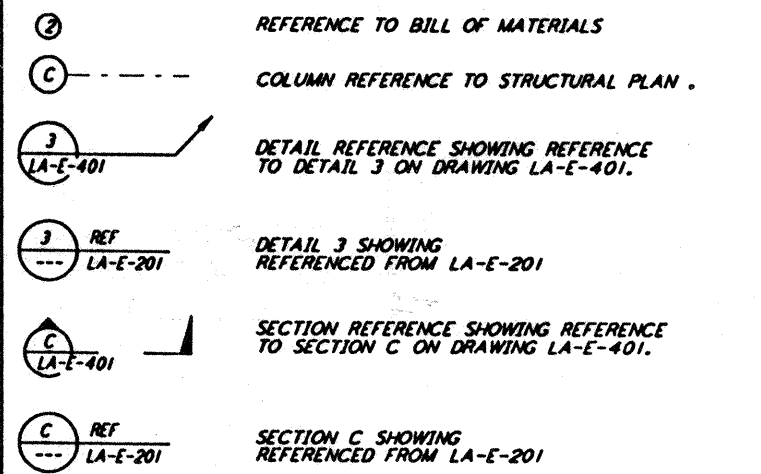
ABBREVIATIONS AND ACRONYMS

HD -HEAD.
HI -HIGH CURRENT.
HID -HIGH INTENSITY DISCHARGE.
HP -HORSEPOWER.
HPS -HIGH PRESSURE SODIUM.
HT -HEAT TREAT.
HTR -HEATER.
HV -HIGH VOLTAGE.
HVAC -HEATING, VENTILATION, AND AIR CONDITIONING.
HE -HEAT EXCHANGER.
ICEA -INSULATED CABLE ENGINEERS ASSOCIATION.
IE -INTERNAL ELEVATION.
IEEE -INSTITUTE OF ELECTRICAL AND ELECTRONIC ENGINEERS.
IG -INERT GAS.
IGW -INTERMEDIATE GRADE WELD.
IMC -INTERMEDIATE GRADE CONDUIT, UL LABELED.
IN -INCH.
INC -INCORPORATED.
INST -INSTANTANEOUS.
INSTR -INSTRUMENT.
INTERCOM -INTERCOMMUNICATION.
INV -INVERT ELEVATION.
IR -INTERLOCKING RELAY.
JB -JUNCTION BOX.
KA -KILOAMPERE.
KCAL -THOUSAND CALORIC MILLS.
KIL -KILO.
KVA -KILOWATT.
KVAR -KILOWATT AMPERES REACTIVE.
KW -KILOWATT.
KWH -KILOWATT HOURS.
LB -POUND.
LG -LONG.
LPS -LOW PRESSURE SODIUM.
LO -LIQUID TIGHT FLEXIBLE CONDUIT, UL LABELED.
LTG -LIGHTING.
LV -LOW VOLTAGE.
LVEA -LASER VACUUM EQUIPMENT AREA.
MAX -MAXIMUM.
MAINT -MAINTENANCE.
MC -METAL CLAD CABLE, UL LABELED.
MCC -MOTOR CONTROL CENTER, UL LABELED.
MCP -MOTOR CIRCUIT PROTECTOR, UL LABELED.
MCS -MOLDED CASE SWITCH, UL LABELED.
MDF -MAIN DISTRIBUTION FRAME.
MECH -MECHANICAL.
MEGA -1,000,000.
MFR -MANUFACTURER.
MICRO -0.000001.
MILL -MIL.
MIL -MIL.
MIN -MINIMUM.
MISC -MISCELLANEOUS.
MTC -MOUNTING.
MH -MOUNTING HEIGHT.
MTW -MACHINE TOOL WIRE, UL LABELED.
MSHA -MINE SAFETY AND HEALTH ADMINISTRATION.
MUX -MULTIPLEX.
MV -MEDIUM VOLTAGE (EQUIPMENT), OR MEDIUM VOLTAGE CABLE, UL LABELED, 138KV INSULATED TYPE 40-50 PER REC.
N -NORTH.
NA -NON AUTOMATIC.
NA.C. -NORMALLY CLOSED.
NEC -NATIONAL ELECTRICAL CODE.
NEMA -NATIONAL ELECTRICAL MANUFACTURERS ASSOCIATION.
NESC -NATIONAL ELECTRICAL SAFETY CODE.
NEUT -NEUTRAL.
NF -NON FUSED.
NFPA -NATIONAL FIRE PROTECTION ASSOCIATION.
NIC -NOT IN CONTRACT.
NL -NIGHT LIGHT.
N.O. -NORMALLY OPEN.
NPT -NATIONAL PIPE THREAD.
NTS -NOT TO SCALE.
-NUMBER.
OAS -OVERALL SHIELD.
OC -ON CENTER.
OCB -OIL CIRCUIT BREAKER.
OD -OUTSIDE DIAMETER.
OFE -OWNER FURNISHED EQUIPMENT.
OH -OVERHEAD.
OL -OVERLOAD RELAY CONTACTS.
OSB -OPERATIONS SUPPORT BUILDING.
OSHA -OCCUPATIONAL SAFETY AND HEALTH ADMINISTRATION.
P -PHASE.
PA -PUBLIC ADDRESS.
PABX -PRIVATE AUTOMATIC BRANCH EXCHANGE.
PB -PUSH BUTTON.
PF -POWER FACTOR.
PILC -PAPER INSULATED LEAD COVERED CABLE.
PLATF -PLATFORM.
PNE -PANEL.
PID -PIPING AND INSTRUMENTATION DIAGRAM.
PLTC -POWER LIMITED TRAY CABLE, UL LABELED.
PR -PANEL.
PS -PRESSURE SW.
PVC -POLYVINYL CHLORIDE CONDUIT.
RAC -RIGID ALUMINUM CONDUIT, UL LABELED.
REF -REFERENCE.
RCPT -RECEPTACLE.
REQD -REQUIRED.
RHW -RUBBER INSULATED HEAT AND MOISTURE RESISTANT WIRE, UL LABELED.
RM -ROOM.
RMS -ROOT MEAN SQUARE.
RPHC -RIGID POLYVINYL CHLORIDE CONDUIT SCHEDULE 40, UL LABELED.
RPHC-80 -RIGID POLYVINYL CHLORIDE CONDUIT SCHEDULE 80, UL LABELED.
RSB -RIGID SILICON-BRONZE CONDUIT, UL LABELED.
RT -RAINTIGHT, UL LABELED.
RVNR -REDUCED VOLTAGE NON-REVERSING.

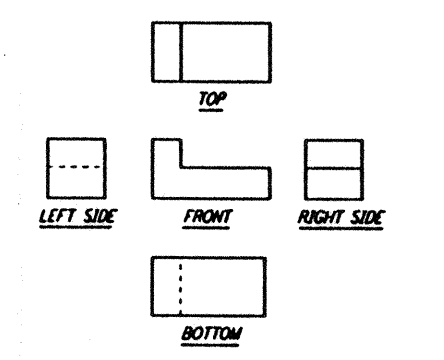
ABBREVIATIONS AND ACRONYMS

IP -SINGLE POLE.
SC -SHORT CIRCUIT.
SCH -SCHEDULE.
SECT -SECTION.
SIS -SYNTHETIC INSULATED HEAT RESISTANT SWITCHBOARD WIRE, UL LABELED.
SH -SHIELDED.
SHT -SHEET.
SHTP -SHIELDED TWISTED PAIR.
SHTR -SHIELDED TWISTED TRIADS.
SHTD -SHIELDED TWISTED DIADS.
SOV -SOLENOID OPERATED VALVE.
SPDT -SINGLE POLE DOUBLE THROW.
SPEC -SPECIFICATION.
SPST -SINGLE POLE SINGLE THROW.
SQ -SQUARE.
SST -STAINLESS STEEL, TYPE 316.
STD -STANDARD.
STR -STRUCTURAL.
STRD -STRANDED.
SUBST -SUBSTATION.
SW -SWITCH.
SWBD -SWITCHBOARD.
SWGR -SWITCHGEAR.
SWRK -SWITCHRACK.
SYM -SYMMETRICAL.
2P -2 POLE.
3P -3 POLE.
3W -THREE WIRE.
TBD -TO BE DETERMINED.
TC -TRAY CABLE.
TEL -TELEPHONE.
TERM -TERMINAL.
TMM -THERMOPLASTIC INSULATED HEAT RESISTANT NYLON JACKET WIRE, UL LABELED.
TMMW -THERMOPLASTIC INSULATED HEAT AND MOISTURE RESISTANT WIRE, UL LABELED.
TMMN -THERMOPLASTIC INSULATED HEAT AND MOISTURE RESISTANT NYLON JACKET WIRE, UL LABELED.
TDC -TOP OF CONCRETE.
TOD -TOP OF DUCT.
TOS -TOP OF STEEL.
TP -TWISTED PAIR.
TYP -TYPICAL.
ULC -UNIFORM BUILDING CODE.
ULG -UNDERGROUND.
UL -UNDERWRITERS LABORATORIES INC.
UNF -UNIFIED NATIONAL COARSE SCREW THREAD (SEE NOTE 10).
UNF -UNIFIED NATIONAL FINE SCREW THREAD.
UNF-8 -UNIFIED NATIONAL 8 THREAD SERIES.
UNF-12 -UNIFIED NATIONAL 12 THREAD SERIES.
UNF-16 -UNIFIED NATIONAL 16 THREAD SERIES.
UNLESS OTHERWISE NOTED.
UPS -UNINTERRUPTIBLE POWER SUPPLY.
V -VOLT.
VAR -VARIABLE OR VOLT AMPERES REACTIVE.
VEA -VACUUM EQUIPMENT AREA.
VD -VOLTAGE DROP.
VT -VAPORTIGHT, UL LABELED.
W -WATT OR WIRE.
WP -WEATHERPROOF.
WT -WEIGHT.
Z -IMPEDANCE.
ZMFR -ZINC METAL FINISHED.
ZLPE -ZINC POLYETHYLENE INSULATED, UL LABELED TO 35 KV, CERTIFIED TO AEC SPECIFICATION ABOVE 35 KV, DO NOT IDENTIFY AS ZLPE, DO NOT USE ICEA.

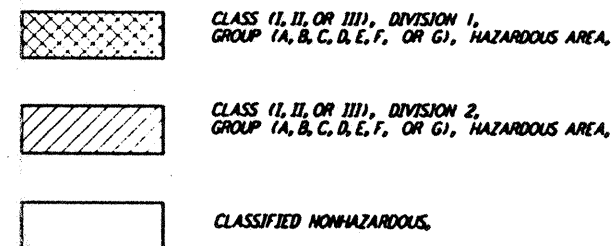
TYPICAL SYMBOLS



TYPICAL DRAWING LAYOUT



AREA CLASSIFICATION SYMBOLS



This document and the design it covers are the property of PARSONS. They are loaned only with the borrower's expressed written agreement that they will not be reproduced, copied, loaned, exhibited, or used in any other way, except by the borrower.

Table with columns for drawing no., description, date, and revision details. Includes a section for 'ISSUED FOR BID' and 'PRELIMINARY DESIGN REVIEW'.

PARSONS logo and address: 100 WEST WALNUT STREET PASADENA, CALIFORNIA

LIGO logo and address: CALIFORNIA INSTITUTE OF TECHNOLOGY MASSACHUSETTS INSTITUTE OF TECHNOLOGY

Project information: LASER INTERFEROMETER GRAVITATIONAL-WAVE OBSERVATORY SITE NO. 2 - LIVINGSTON, LOUISIANA. Includes title, scale, contract number, project number, sheet number, and drawing number LA-E-001.

Tue Jul 23 17:28:58 1996 S3-V18B2 J:\PLOTS\QUEUES\V18B2\E001.PRF